

PLAT RECORDING SHEET

PLAT NAME: Cinco Ranch Northwest, Sec. 17

PLAT NO: _____

ACREAGE: 33.73

LEAGUE: Alex Phillips Survey

ABSTRACT NUMBER: 300

NUMBER OF BLOCKS: 4

NUMBER OF LOTS: 94

NUMBER OF RESERVES: 6

OWNERS: Nash Cinco NW, LLC

(DEPUTY CLERK)

MASH DINO INC, LLC, a Delaware limited liability company, and through Alex F. Bauer, Authorized Secretary of MASH DINO INC, LLC, do hereby certify that the information contained herein is true and correct to the best of their knowledge and belief.

WHEREAS, MASH DINO INC, LLC, a Delaware limited liability company, and through Alex F. Bauer, Authorized Secretary of MASH DINO INC, LLC, do hereby certify that the information contained herein is true and correct to the best of their knowledge and belief.

WHEREAS, MASH DINO INC, LLC, a Delaware limited liability company, and through Alex F. Bauer, Authorized Secretary of MASH DINO INC, LLC, do hereby certify that the information contained herein is true and correct to the best of their knowledge and belief.

WHEREAS, MASH DINO INC, LLC, a Delaware limited liability company, and through Alex F. Bauer, Authorized Secretary of MASH DINO INC, LLC, do hereby certify that the information contained herein is true and correct to the best of their knowledge and belief.

WHEREAS, MASH DINO INC, LLC, a Delaware limited liability company, and through Alex F. Bauer, Authorized Secretary of MASH DINO INC, LLC, do hereby certify that the information contained herein is true and correct to the best of their knowledge and belief.

WHEREAS, MASH DINO INC, LLC, a Delaware limited liability company, and through Alex F. Bauer, Authorized Secretary of MASH DINO INC, LLC, do hereby certify that the information contained herein is true and correct to the best of their knowledge and belief.

WHEREAS, MASH DINO INC, LLC, a Delaware limited liability company, and through Alex F. Bauer, Authorized Secretary of MASH DINO INC, LLC, do hereby certify that the information contained herein is true and correct to the best of their knowledge and belief.

WHEREAS, MASH DINO INC, LLC, a Delaware limited liability company, and through Alex F. Bauer, Authorized Secretary of MASH DINO INC, LLC, do hereby certify that the information contained herein is true and correct to the best of their knowledge and belief.

WHEREAS, MASH DINO INC, LLC, a Delaware limited liability company, and through Alex F. Bauer, Authorized Secretary of MASH DINO INC, LLC, do hereby certify that the information contained herein is true and correct to the best of their knowledge and belief.

WHEREAS, MASH DINO INC, LLC, a Delaware limited liability company, and through Alex F. Bauer, Authorized Secretary of MASH DINO INC, LLC, do hereby certify that the information contained herein is true and correct to the best of their knowledge and belief.

WHEREAS, MASH DINO INC, LLC, a Delaware limited liability company, and through Alex F. Bauer, Authorized Secretary of MASH DINO INC, LLC, do hereby certify that the information contained herein is true and correct to the best of their knowledge and belief.

WHEREAS, MASH DINO INC, LLC, a Delaware limited liability company, and through Alex F. Bauer, Authorized Secretary of MASH DINO INC, LLC, do hereby certify that the information contained herein is true and correct to the best of their knowledge and belief.

WHEREAS, MASH DINO INC, LLC, a Delaware limited liability company, and through Alex F. Bauer, Authorized Secretary of MASH DINO INC, LLC, do hereby certify that the information contained herein is true and correct to the best of their knowledge and belief.

WHEREAS, MASH DINO INC, LLC, a Delaware limited liability company, and through Alex F. Bauer, Authorized Secretary of MASH DINO INC, LLC, do hereby certify that the information contained herein is true and correct to the best of their knowledge and belief.

WHEREAS, MASH DINO INC, LLC, a Delaware limited liability company, and through Alex F. Bauer, Authorized Secretary of MASH DINO INC, LLC, do hereby certify that the information contained herein is true and correct to the best of their knowledge and belief.

WHEREAS, MASH DINO INC, LLC, a Delaware limited liability company, and through Alex F. Bauer, Authorized Secretary of MASH DINO INC, LLC, do hereby certify that the information contained herein is true and correct to the best of their knowledge and belief.

WHEREAS, MASH DINO INC, LLC, a Delaware limited liability company, and through Alex F. Bauer, Authorized Secretary of MASH DINO INC, LLC, do hereby certify that the information contained herein is true and correct to the best of their knowledge and belief.

WHEREAS, MASH DINO INC, LLC, a Delaware limited liability company, and through Alex F. Bauer, Authorized Secretary of MASH DINO INC, LLC, do hereby certify that the information contained herein is true and correct to the best of their knowledge and belief.

WHEREAS, MASH DINO INC, LLC, a Delaware limited liability company, and through Alex F. Bauer, Authorized Secretary of MASH DINO INC, LLC, do hereby certify that the information contained herein is true and correct to the best of their knowledge and belief.

GENERAL NOTES

- 1. "ALL" indicates "All" items.
2. "ALL" indicates "All" items.
3. "ALL" indicates "All" items.
4. "ALL" indicates "All" items.
5. "ALL" indicates "All" items.
6. "ALL" indicates "All" items.
7. "ALL" indicates "All" items.
8. "ALL" indicates "All" items.
9. "ALL" indicates "All" items.
10. "ALL" indicates "All" items.
11. "ALL" indicates "All" items.
12. "ALL" indicates "All" items.
13. "ALL" indicates "All" items.
14. "ALL" indicates "All" items.
15. "ALL" indicates "All" items.
16. "ALL" indicates "All" items.
17. "ALL" indicates "All" items.
18. "ALL" indicates "All" items.
19. "ALL" indicates "All" items.
20. "ALL" indicates "All" items.
21. "ALL" indicates "All" items.
22. "ALL" indicates "All" items.
23. "ALL" indicates "All" items.
24. "ALL" indicates "All" items.
25. "ALL" indicates "All" items.
26. "ALL" indicates "All" items.
27. "ALL" indicates "All" items.
28. "ALL" indicates "All" items.
29. "ALL" indicates "All" items.
30. "ALL" indicates "All" items.



VICINITY MAP
KEY MAP # 484-N
CINCO RANCH NORTHWEST SEC. 17

Approved by the Commissioners Court of Fort Bend County, Texas, this _____ day of _____, 2015.
Robert Morrison, President, County Commissioner
Robert E. Moore, County Judge
James Peterson, President, County Commissioner

I, Laura Robert, County Clerk in and for Fort Bend County, hereby certify that the foregoing instrument with the authentications and acknowledgments are filed for recordation in my office on _____, 2015, at _____ o'clock _____ of the day.
Witness my hand and seal of office, at Houston, Texas, the day and date last above written.
Laura Robert, County Clerk
By: _____



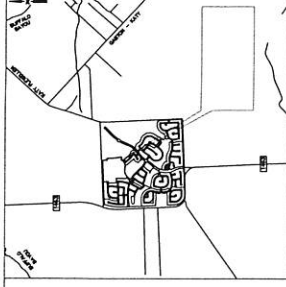
CINCO RANCH NORTHWEST SEC 17

A SUBDIVISION OF 33,733 ACRES OF LAND LOCATED IN THE ALEX PHILIPS SURVEY, A-300 FORT BEND COUNTY, TEXAS

SCALE: 1"=200'
LAD PLANNED: 1/10/14
LAD PLANNED: 1/10/14
LAD PLANNED: 1/10/14



10400 W. SAM HOUSTON PKWY. SUITE 300, HOUSTON, TEXAS 77066
TEL: 281-416-3000
WWW.ECE-ENGINEERS.COM



VICINITY MAP
KEY MAP # 451 N

- DISTRICT NAMES
 FORT BEND M.I.D. NO. 36
 FORT BEND DRAINAGE DISTRICT
 FORT BEND ISD
 FORT BEND ELECTRICITY
 FORT BEND WATER
 FORT BEND TELEPHONE
 FORT BEND CABLE



CINCO RANCH NORTHWEST SEC 17

A SUBDIVISION OF 33.73 ACRES OF LAND
 LOCATED IN THE
 ALEX PHILLIPS SURVEY, A-300
 FORT BEND COUNTY, TEXAS

DATE: 04/11/2013
 SCALE: 1"=50'
 PROJECT NO.: 13040
 SHEET NO.: 1 OF 9

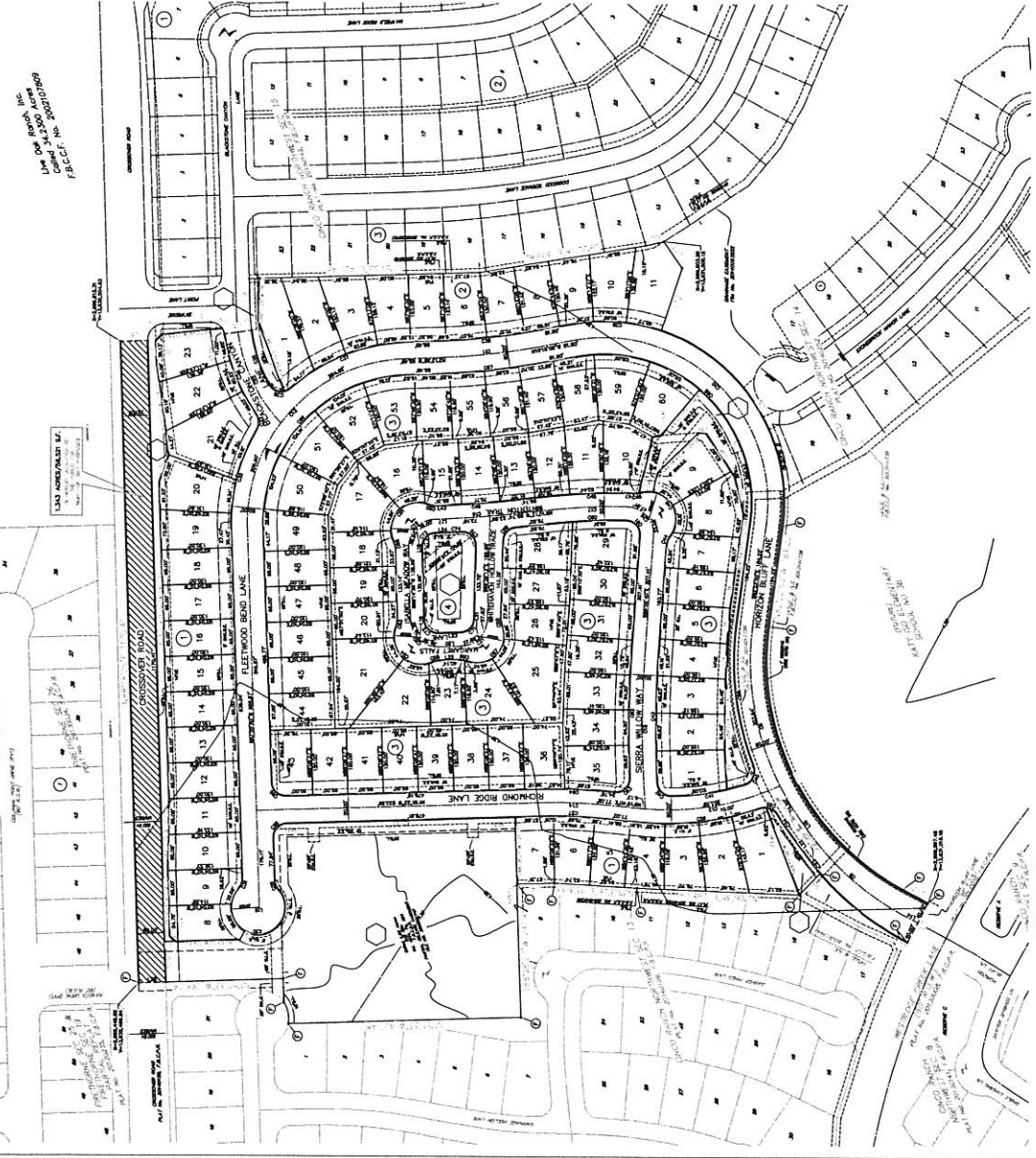
BY: J. J. JONES, P.E., L.S., L.C.S.
 10777 Westheimer, Suite 400, Houston, TX 77042
 281-419-7000
 13040 F. BEND COUNTY, TEXAS, TRACT A-300, BLOCK 1, LOT 1-100
 13040 F. BEND COUNTY, TEXAS, TRACT A-300, BLOCK 1, LOT 1-100



Brown & Gay Engineers, Inc.
 10777 Westheimer, Suite 400, Houston, TX 77042
 281-419-7000
 13040 F. BEND COUNTY, TEXAS, TRACT A-300, BLOCK 1, LOT 1-100
 13040 F. BEND COUNTY, TEXAS, TRACT A-300, BLOCK 1, LOT 1-100

LAKE DATA

NO.	AREA (S.F.)	PERCENT
1	1,234,567	3.65
2	2,345,678	7.01
3	3,456,789	10.28
4	4,567,890	13.55
5	5,678,901	16.82
6	6,789,012	20.09
7	7,890,123	23.36
8	8,901,234	26.63
9	9,012,345	26.72
10	10,123,456	30.00
11	11,234,567	33.27
12	12,345,678	36.54
13	13,456,789	39.81
14	14,567,890	43.08
15	15,678,901	46.35
16	16,789,012	49.62
17	17,890,123	52.89
18	18,901,234	56.16
19	19,012,345	56.25
20	20,123,456	59.52
21	21,234,567	62.79
22	22,345,678	66.06
23	23,456,789	69.33
24	24,567,890	72.60
25	25,678,901	75.87
26	26,789,012	79.14
27	27,890,123	82.41
28	28,901,234	85.68
29	29,012,345	85.77
30	30,123,456	89.04
31	31,234,567	92.31
32	32,345,678	95.58
33	33,456,789	98.85
34	34,567,890	100.00



RESERVE TABLE

RESERVE	AREA (S.F.)	PERCENT
1	1,234,567	3.65
2	2,345,678	7.01
3	3,456,789	10.28
4	4,567,890	13.55
5	5,678,901	16.82
6	6,789,012	20.09
7	7,890,123	23.36
8	8,901,234	26.63
9	9,012,345	26.72
10	10,123,456	30.00
11	11,234,567	33.27
12	12,345,678	36.54
13	13,456,789	39.81
14	14,567,890	43.08
15	15,678,901	46.35
16	16,789,012	49.62
17	17,890,123	52.89
18	18,901,234	56.16
19	19,012,345	56.25
20	20,123,456	59.52
21	21,234,567	62.79
22	22,345,678	66.06
23	23,456,789	69.33
24	24,567,890	72.60
25	25,678,901	75.87
26	26,789,012	79.14
27	27,890,123	82.41
28	28,901,234	85.68
29	29,012,345	85.77
30	30,123,456	89.04
31	31,234,567	92.31
32	32,345,678	95.58
33	33,456,789	98.85
34	34,567,890	100.00