



Fort Bend County Engineering  
FORT BEND COUNTY, TEXAS

Richard W. Stolleis, P.E.  
County Engineer

July 20, 2015

Commissioner James Patterson  
Fort Bend County Precinct 4  
12919 Dairy Ashford Rd Suite 200  
Sugar Land, TX 77478

**RE: Long Meadow Farms, Section 34 - Traffic Control Plan  
Long Meadow Farms, Section 36**

Dear Commissioner Patterson:

Fort Bend County Engineering has completed and recommends approval of the traffic control plan for the above referenced subdivision. The public hearing date for acceptance of the plan is being scheduled.

A copy of the traffic control plan is attached for your review. If you should have any questions, please give me a call.

Sincerely,



Jorge Salgado  
Construction Inspector  
Engineer Technician I

JS/clg

cc: Judge Robert E. Hebert, County Judge  
Marc Grant - FBC Road & Bridge  
Brian Fields - Signage Department  
File



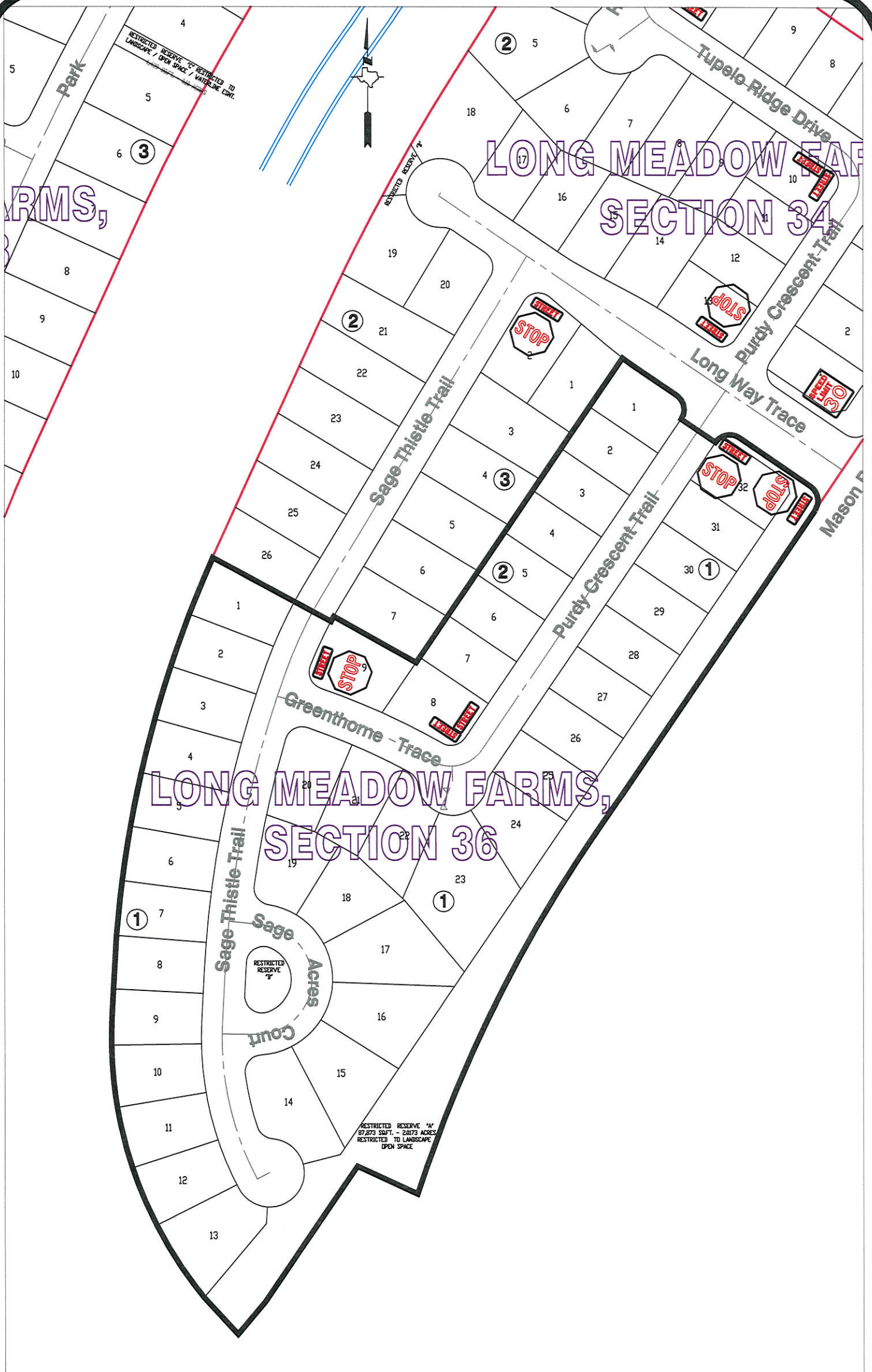
**Note:**

The purpose of this traffic control plan is to establish traffic control for Long Meadow Farms, Section 34.

Drawn By: L. Brdecka  
 Date: 7-21-15  
 Approved By: Clay A. Forster, PE  
 Date: 21 JUL 15  
 Scale  
 1" = 300'-0"

**Long Meadow Farms,  
 Section 34  
 Control Map and  
 Traffic Sign Layout**

Fort Bend County Engineering Dept.  
 301 Jackson Street  
 Richmond, Texas 77469



**Note:**

The purpose of this traffic control plan is to establish traffic control for Long Meadow Farms, Section 36.

Drawn By: L. Brdecka

Date: 7-21-15

Approved By: Clay A. Forister, PE

Date: 21 JUL 15

Scale

1" = 200'-0"

Long Meadow Farms,  
Section 36

Control Map and  
Traffic Sign Layout

Fort Bend County Engineering Dept.  
301 Jackson Street  
Richmond, Texas 77469