



Fort Bend County Engineering
FORT BEND COUNTY, TEXAS

Richard W. Stolleis, P.E.
County Engineer

July 1, 2015

Commissioner W. A. "Andy" Meyers
Fort Bend County Precinct 3
22333 Grand Corner Drive
Katy, Texas 77494

Commissioner James Patterson
Fort Bend County Precinct 4
12919 Dairy Ashford Rd Suite 200
Sugar Land, TX 77478

RE: West Bellfort – Revised Traffic Control Plan

Dear Commissioners:

Fort Bend County Engineering has completed and recommends approval of the traffic control plan for the above referenced subdivision. The public hearing date for acceptance of the plan is being scheduled.

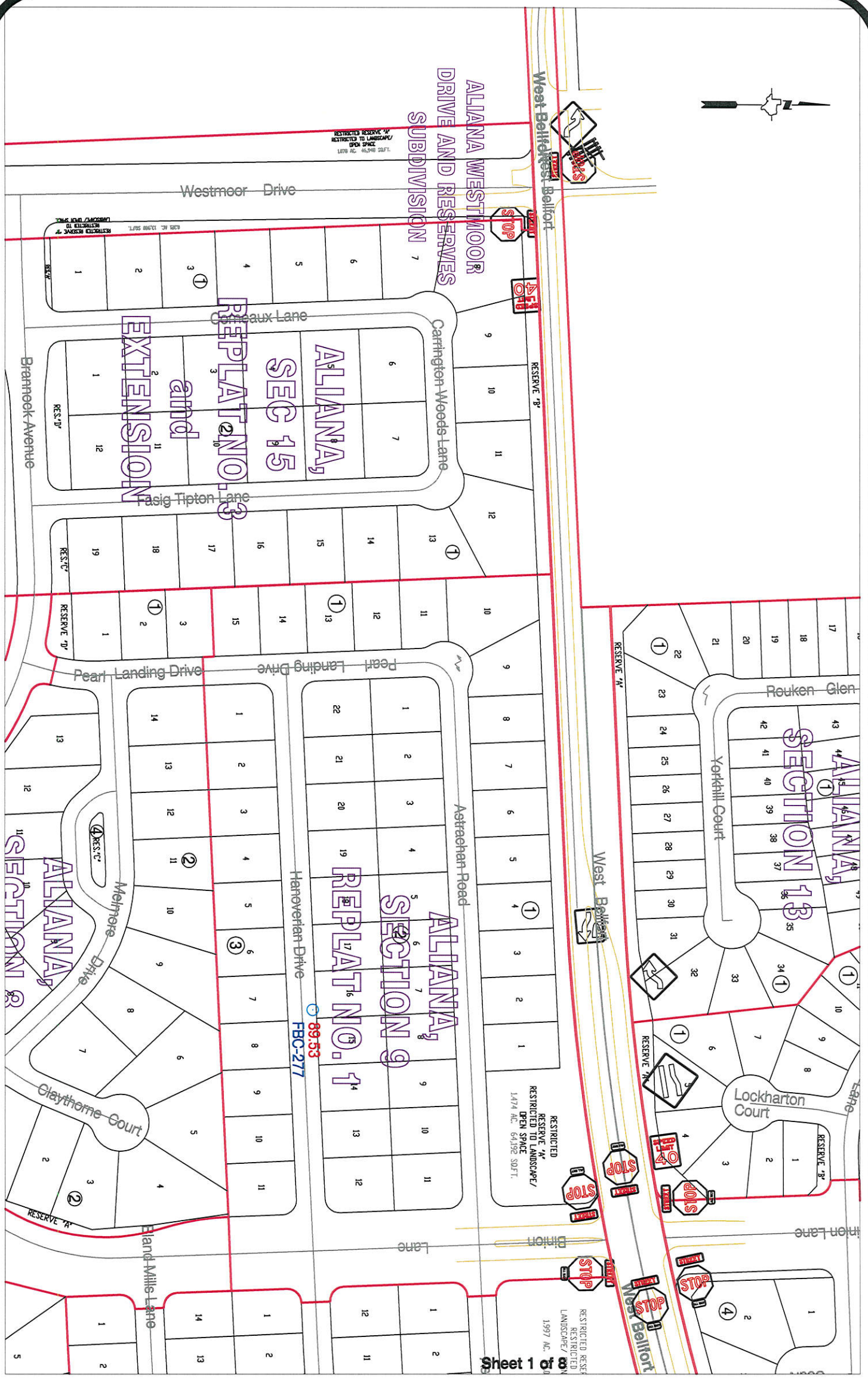
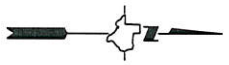
A copy of the traffic control plan is attached for your review. If you should have any questions, please give me a call.

Sincerely,

Rick J. Staigle, PE, PTOE
First Assistant County Engineer
Fort Bend County

RJS/gg

cc: Judge Robert E. Hebert, County Judge
Marc Grant - FBC Road & Bridge
Brian Fields - Signage Department
File

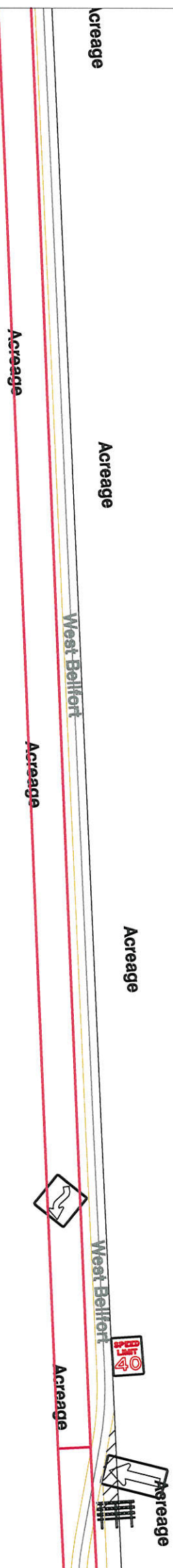
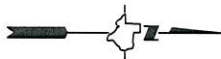


Sheet 1 of 3

Note:
 The purpose of this traffic control plan is to revise traffic control for West Belfort from Bionion Lane to Meadow Ranch Parkway with the addition of "40 m.p.h." signs (R2-1) as indicated on the drawing.

Drawn By: L. Brdecka
 Date: 7-1-15
 Approved By: Rick Staigle, PE, PTOE
 Date: 7/2/15
 Scale: 1" = 200'-0"

West Belfort from Bionion Lane to Meadow Ranch Parkway Control Map and Traffic Sign Layout
 Fort Bend County Engineering Dept.
 301 Jackson Street
 Richmond, Texas 77469

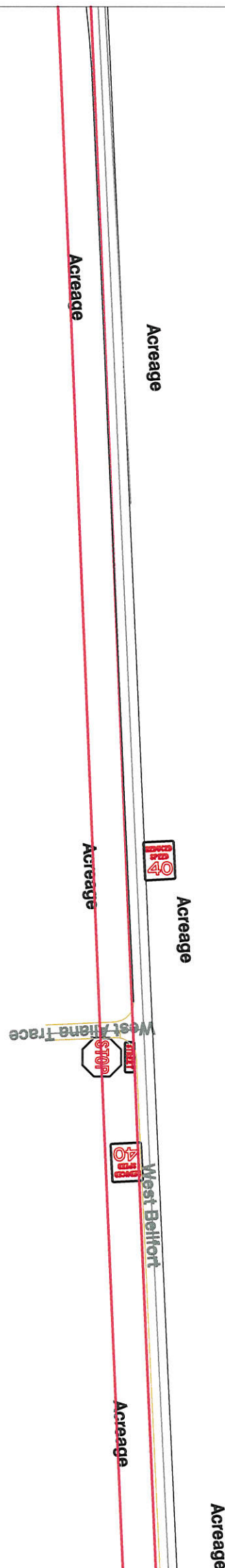
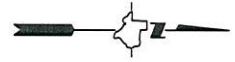


Sheet 2 of 8

Note:
 The purpose of this traffic control plan is to revise traffic control for West Bellfort from Binion Lane to Meadow Ranch Parkway with the addition of "40 m.p.h." signs (R2-1) as indicated on the drawing.

Drawn By: L. Brdecka
 Date: 7-1-15
 Approved By: Rick Staigle, PE, PTOE
 Date: 7/2/15 *RJS*
 Scale: 1" = 200'-0"

West Bellfort from Binion Lane to Meadow Ranch Parkway Control Map and Traffic Sign Layout
 Fort Bend County Engineering Dept.
 301 Jackson Street
 Richmond, Texas 77469



Sheet 3 of 8

Note:

The purpose of this traffic control plan is to revise traffic control for West Bellfort from Binion Lane to Meadow Ranch Parkway with the addition of "40 m.p.h." signs (R2-1) as indicated on the drawing.

Drawn By: L. Brdecka

Date: 7-1-15

Approved By: Rick Staigle, PE, PTOE

Date: 7/2/15 *RJS*

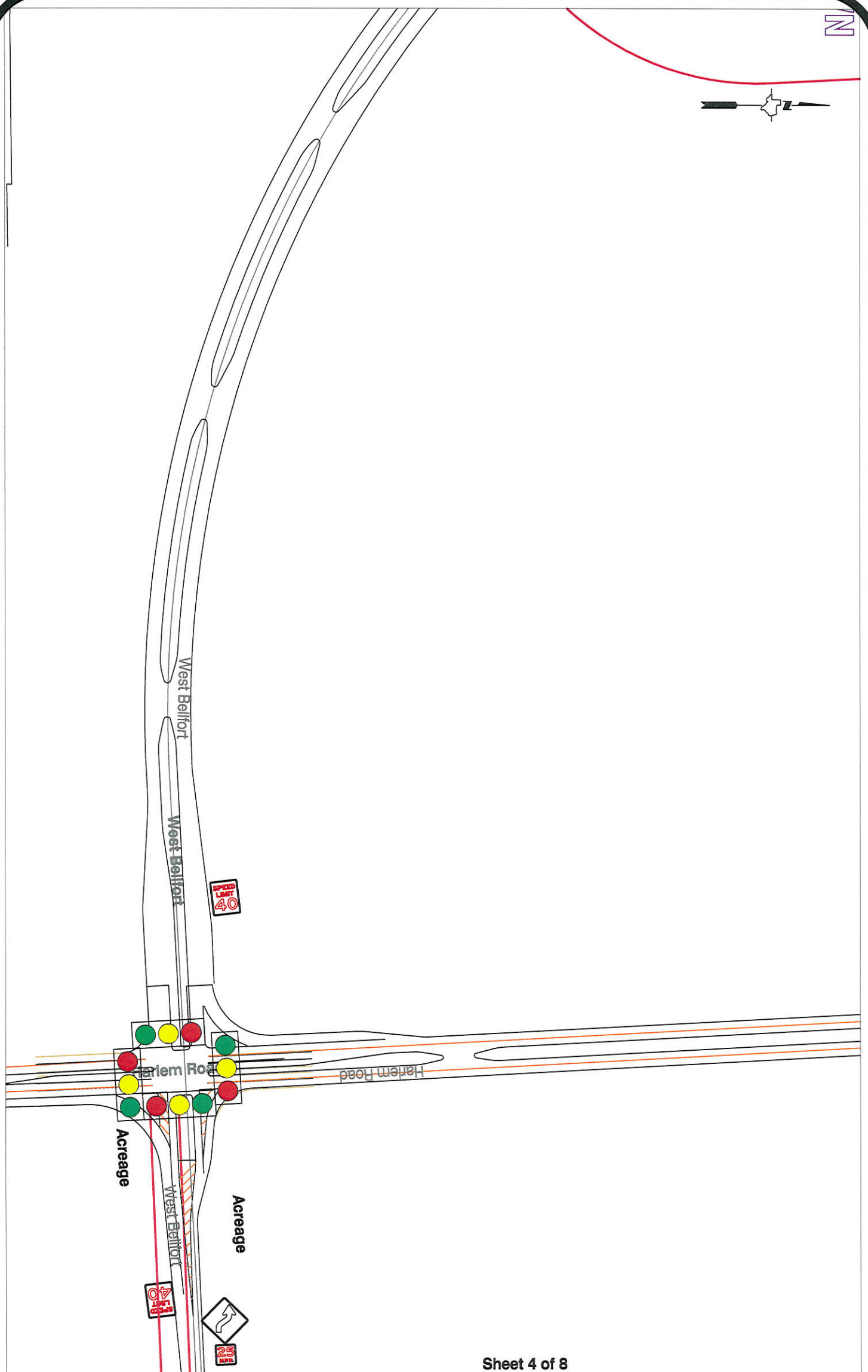
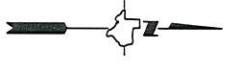
Scale

1" = 200'-0"

West Bellfort from Binion Lane to Meadow Ranch Parkway Control Map and Traffic Sign Layout

Fort Bend County Engineering Dept.
301 Jackson Street
Richmond, Texas 77469

N



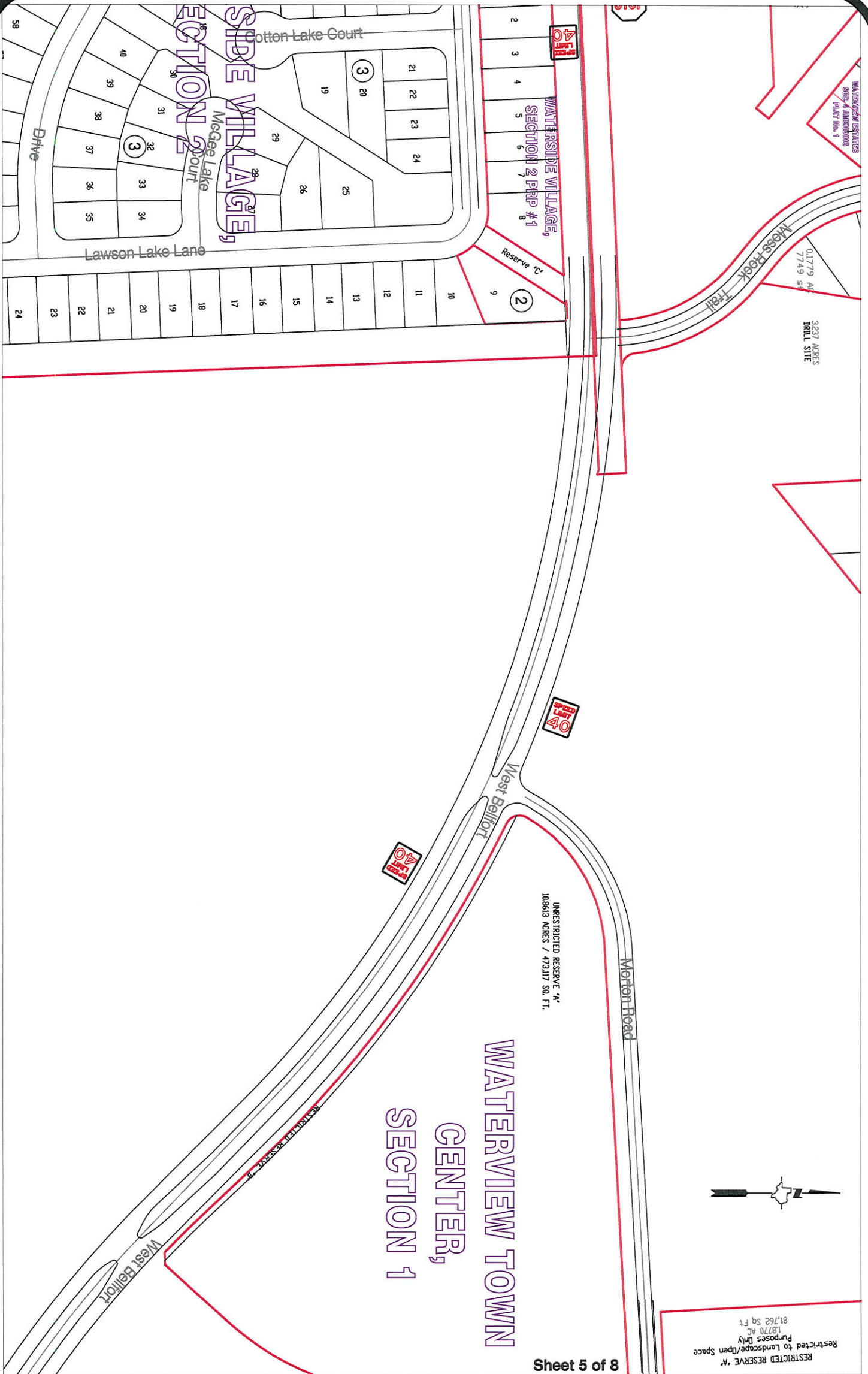
Sheet 4 of 8

Note:
 The purpose of this traffic control plan is to revise traffic control for West Bellfort from Binion Lane to Meadow Ranch Parkway with the addition of "40 m.p.h." signs (R2-1) as indicated on the drawing.

Drawn By: L. Brdecka
 Date: 7-1-15
 Approved By: Rick Staigle, PE, PTOE
 Date: 7/2/15 RJS
 Scale: 1" = 200'-0"

West Bellfort from Binion Lane to Meadow Ranch Parkway Control Map and Traffic Sign Layout

Fort Bend County Engineering Dept.
 301 Jackson Street
 Richmond, Texas 77469



Sheet 5 of 8

Note:

The purpose of this traffic control plan is to revise traffic control for West Belfort from Binion Lane to Meadow Ranch Parkway with the addition of "40 m.p.h." signs (R2-1) as indicated on the drawing.

Drawn By: L. Brdecka
 Date: 7-1-15
 Approved By: Rick Staigle, PE, PTOE
 Date: 7/2/15 RJS
 Scale
 1" = 200'-0"

West Belfort from Binion Lane to Meadow Ranch Parkway Control Map and Traffic Sign Layout

Fort Bend County Engineering Dept.
 301 Jackson Street
 Richmond, Texas 77469

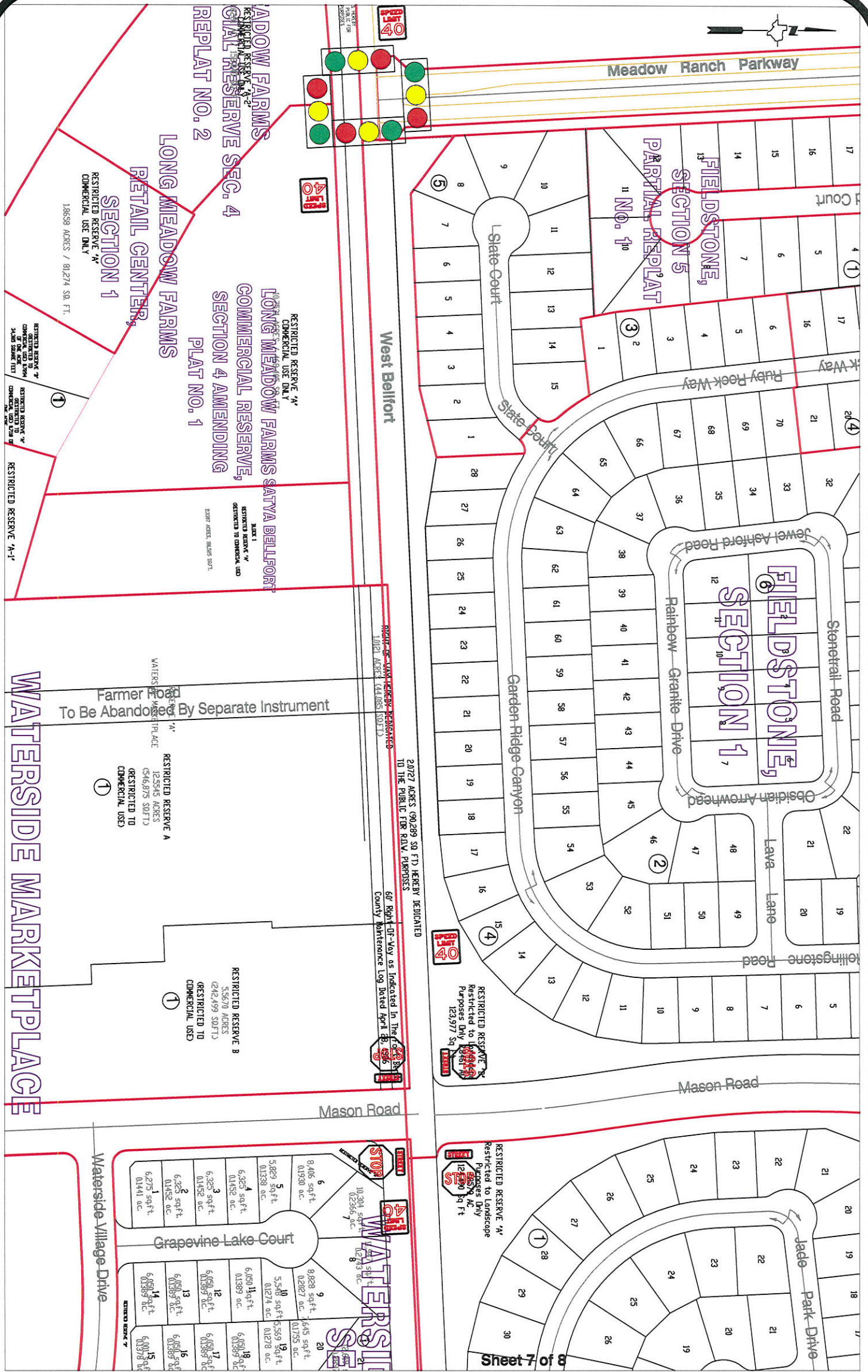


Sheet 6 of 8

Note:
 The purpose of this traffic control plan is to revise traffic control for West Belfort from Biunion Lane to Meadow Ranch Parkway with the addition of "40 m.p.h." signs (R2-1) as indicated on the drawing.

Drawn By: L. Brdecka
 Date: 7-1-15
 Approved By: Rick Staigle, PE, PTOE
 Date: 7/2/15 RJS
 Scale
 1" = 200'-0"

West Belfort from Biunion Lane to Meadow Ranch Parkway Control Map and Traffic Sign Layout
 Fort Bend County Engineering Dept.
 301 Jackson Street
 Richmond, Texas 77469

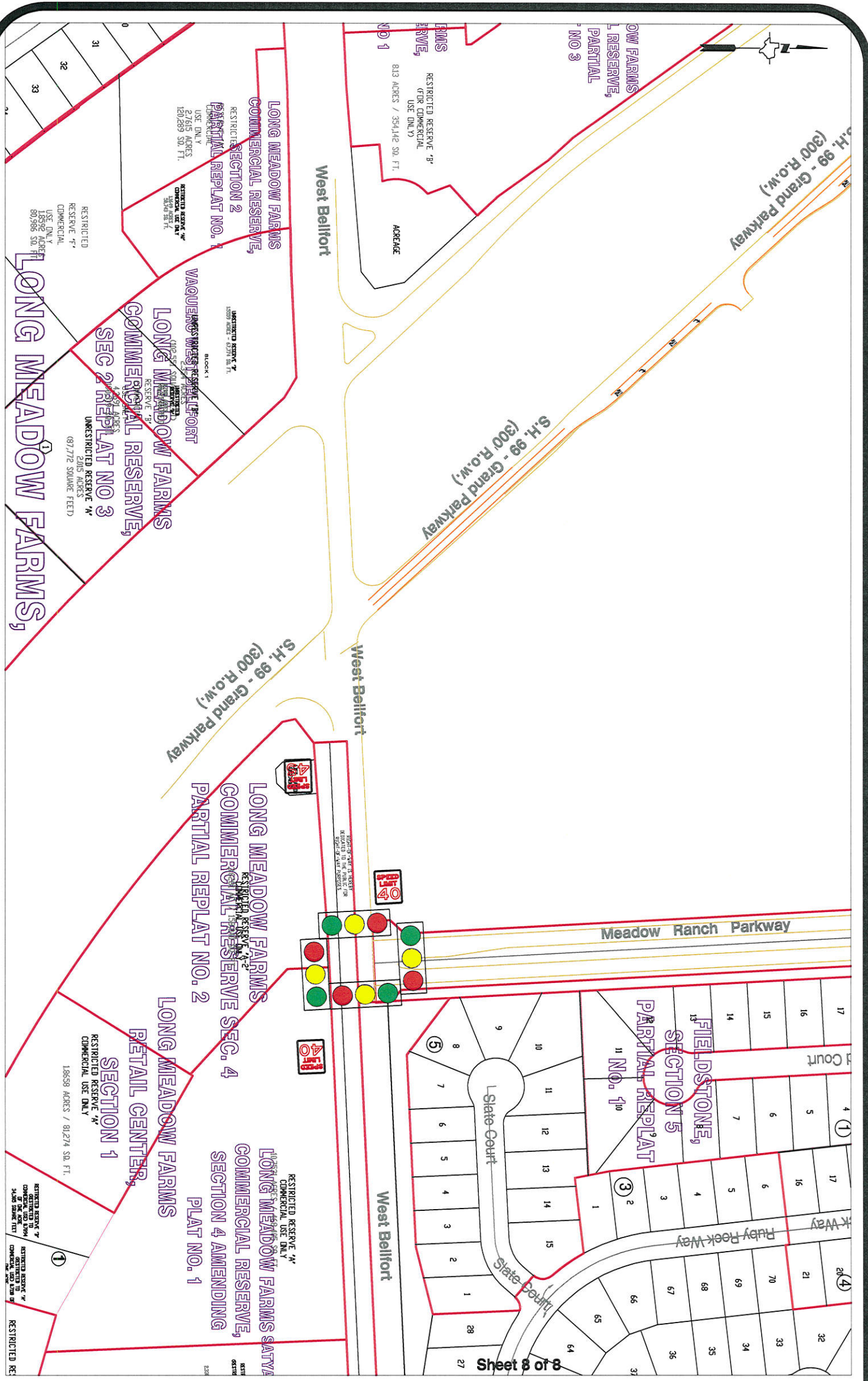


Note:
 The purpose of this traffic control plan is to revise traffic control for West Bellfort from Binion Lane to Meadow Ranch Parkway with the addition of "40 m.p.h." signs (R2-1) as indicated on the drawing.

Drawn By: L. Brdecka
 Date: 7-1-15
 Approved By: Rick Staigle, PE, PTOE
 Date: 7/2/15 RJS
 Scale
 1" = 200'-0"

West Bellfort from Binion Lane to Meadow Ranch Parkway Control Map and Traffic Sign Layout

Fort Bend County Engineering Dept.
 301 Jackson Street
 Richmond, Texas 77469



Sheet 8 of 8

Note:
 The purpose of this traffic control plan is to revise traffic control for West Bellfort from Biunion Lane to Meadow Ranch Parkway with the addition of "40 m.p.h." signs (R2-1) as indicated on the drawing.

Drawn By: L. Brdecka
 Date: 7-1-15
 Approved By: Rick Staigle, PE, PTOE
 Date: 7/2/15 *RSS*
 Scale
 1" = 200'-0"

West Bellfort from Biunion Lane to Meadow Ranch Parkway Control Map and Traffic Sign Layout
 Fort Bend County Engineering Dept.
 301 Jackson Street
 Richmond, Texas 77469