

PLAT RECORDING SHEET

PLAT NAME: Avalon at Riverstone Section Twenty-Two

PLAT NO: _____

ACREAGE: 43.4787

LEAGUE: William Little Survey

ABSTRACT NUMBER: 54

NUMBER OF BLOCKS: 2

NUMBER OF LOTS: 71

NUMBER OF RESERVES: 9

OWNERS: Taylor Morrison of Texas, Inc.

(DEPUTY CLERK)



VICINITY MAP N.T.S.
KEY MAP 608 R

ABBREVIATION LEGEND	
U.L. NO.	UTILITY LOCATION
F.B.C.P.R.	FORT BEND COUNTY PLAT RECORDS
U.E.	UTILITY EASEMENT
S.W.L.	STORM WATER EASEMENT
M.L.E.	MINOR EASEMENT
D.P.F.B.C.	OFFICIAL RECORDS FORT BEND COUNTY
PL. NO.	PLAT AND PAGE
P.O.B.	POINT OF BEGINNING
F.B.C.P.R.	FORT BEND COUNTY DEED RECORDS
A.E.	AREAL EASEMENT
W.P. #	WATERWAY PLAT NUMBER

AVALON AT RIVERSTONE AT SECTION TWENTY-TWO

BEING 43.4787 ACRES
LOCAL TITLE SURVEY A-54,
WILLIAM WITTE SURVEY A-54,
SUGAR LAND E.T.,
FORT BEND COUNTY, TEXAS

71 LOTS 2 BLOCKS 9 RESERVES

DATE: MAY, 2015

RIVERSTONE DEVELOPMENT

OWNER/DEVELOPER:

TAYLOR MORRISON OF TEXAS, INC.

5151 N. SHAWLON DRIVE, SUITE 110
HOUSTON, TEXAS 77041
PHONE: 281-591-3525

PLANNER:

KERRY R. GILBERT & ASSOCIATES, INC.

Land Planning Consultants
2500 CHERRY AVENUE, SUITE 4300
HOUSTON, TEXAS 77006
(281) 895-0510

ACREAGE

CALL 576.02 ACRES
TAYLOR MORRISON OF TEXAS
C.F. NO. 201500931
G.A.F.B.C.

ACREAGE

CALL 576.02 ACRES
TAYLOR MORRISON OF TEXAS
C.F. NO. 201500931
G.O.F.B.C.

ACREAGE

CALL 576.02 ACRES
TAYLOR MORRISON OF TEXAS
C.F. NO. 201500931
G.O.F.B.C.

ACREAGE

CALL 576.02 ACRES
TAYLOR MORRISON OF TEXAS
C.F. NO. 201500931
G.A.F.B.C.

ACREAGE

CALL 576.02 ACRES
TAYLOR MORRISON OF TEXAS
C.F. NO. 201500931
G.A.F.B.C.

ACREAGE

CALL 576.02 ACRES
TAYLOR MORRISON OF TEXAS
C.F. NO. 201500931
G.A.F.B.C.

ACREAGE

CALL 576.02 ACRES
TAYLOR MORRISON OF TEXAS
C.F. NO. 201500931
G.A.F.B.C.

ACREAGE

CALL 576.02 ACRES
TAYLOR MORRISON OF TEXAS
C.F. NO. 201500931
G.A.F.B.C.

ACREAGE

CALL 576.02 ACRES
TAYLOR MORRISON OF TEXAS
C.F. NO. 201500931
G.A.F.B.C.

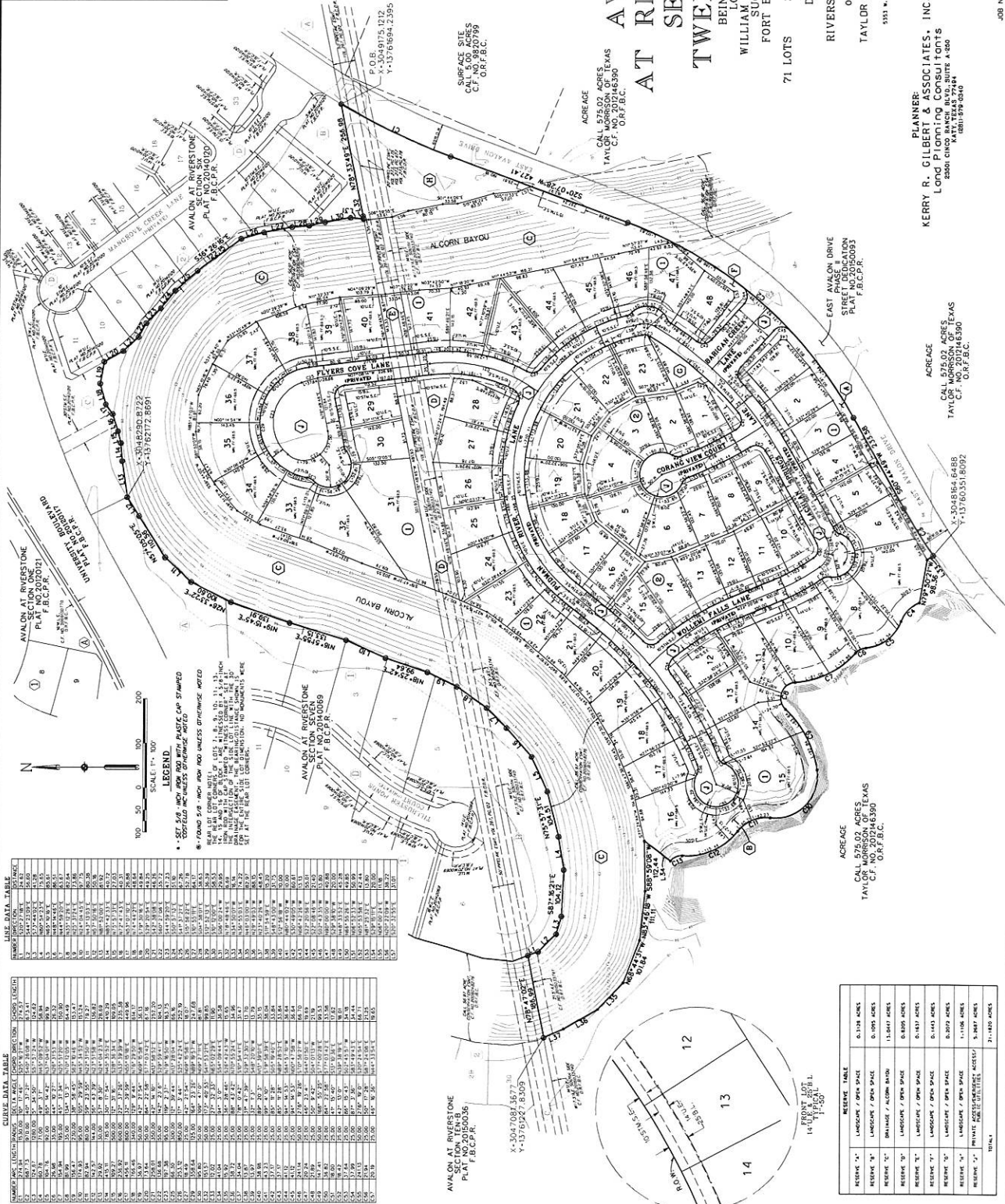


TABLE DATA TABLE

TABLE NO.	SECTION	LOT NO.	ACREAGE	RESERVES
1	1	1	0.134	0.000
1	1	2	0.134	0.000
1	1	3	0.134	0.000
1	1	4	0.134	0.000
1	1	5	0.134	0.000
1	1	6	0.134	0.000
1	1	7	0.134	0.000
1	1	8	0.134	0.000
1	1	9	0.134	0.000
1	1	10	0.134	0.000
1	1	11	0.134	0.000
1	1	12	0.134	0.000
1	1	13	0.134	0.000
1	1	14	0.134	0.000
1	1	15	0.134	0.000
1	1	16	0.134	0.000
1	1	17	0.134	0.000
1	1	18	0.134	0.000
1	1	19	0.134	0.000
1	1	20	0.134	0.000
1	1	21	0.134	0.000
1	1	22	0.134	0.000
1	1	23	0.134	0.000
1	1	24	0.134	0.000
1	1	25	0.134	0.000
1	1	26	0.134	0.000
1	1	27	0.134	0.000
1	1	28	0.134	0.000
1	1	29	0.134	0.000
1	1	30	0.134	0.000
1	1	31	0.134	0.000
1	1	32	0.134	0.000
1	1	33	0.134	0.000
1	1	34	0.134	0.000
1	1	35	0.134	0.000
1	1	36	0.134	0.000
1	1	37	0.134	0.000
1	1	38	0.134	0.000
1	1	39	0.134	0.000
1	1	40	0.134	0.000
1	1	41	0.134	0.000
1	1	42	0.134	0.000
1	1	43	0.134	0.000
1	1	44	0.134	0.000
1	1	45	0.134	0.000
1	1	46	0.134	0.000
1	1	47	0.134	0.000
1	1	48	0.134	0.000
1	1	49	0.134	0.000
1	1	50	0.134	0.000
1	1	51	0.134	0.000
1	1	52	0.134	0.000
1	1	53	0.134	0.000
1	1	54	0.134	0.000
1	1	55	0.134	0.000
1	1	56	0.134	0.000
1	1	57	0.134	0.000
1	1	58	0.134	0.000
1	1	59	0.134	0.000
1	1	60	0.134	0.000
1	1	61	0.134	0.000
1	1	62	0.134	0.000
1	1	63	0.134	0.000
1	1	64	0.134	0.000
1	1	65	0.134	0.000
1	1	66	0.134	0.000
1	1	67	0.134	0.000
1	1	68	0.134	0.000
1	1	69	0.134	0.000
1	1	70	0.134	0.000
1	1	71	0.134	0.000
1	1	72	0.134	0.000
1	1	73	0.134	0.000
1	1	74	0.134	0.000
1	1	75	0.134	0.000
1	1	76	0.134	0.000
1	1	77	0.134	0.000
1	1	78	0.134	0.000
1	1	79	0.134	0.000
1	1	80	0.134	0.000
1	1	81	0.134	0.000
1	1	82	0.134	0.000
1	1	83	0.134	0.000
1	1	84	0.134	0.000
1	1	85	0.134	0.000
1	1	86	0.134	0.000
1	1	87	0.134	0.000
1	1	88	0.134	0.000
1	1	89	0.134	0.000
1	1	90	0.134	0.000
1	1	91	0.134	0.000
1	1	92	0.134	0.000
1	1	93	0.134	0.000
1	1	94	0.134	0.000
1	1	95	0.134	0.000
1	1	96	0.134	0.000
1	1	97	0.134	0.000
1	1	98	0.134	0.000
1	1	99	0.134	0.000
1	1	100	0.134	0.000

LEGEND

- SET 5/8" HIGH AND 1/8" THICK PLASTIC CAP STAMPED
- CONCRETE FINISHES OTHERWISE NOTED
- FOUND 5/8" HIGH AND 1/8" THICK PLASTIC CAP STAMPED
- CONCRETE FINISHES OTHERWISE NOTED
- THE FIRST LETTER OF EACH LOT NUMBER IS THE LOT NUMBER
- THE SECOND LETTER OF EACH LOT NUMBER IS THE BLOCK NUMBER
- THE THIRD LETTER OF EACH LOT NUMBER IS THE SECTION NUMBER
- SET AT THE TOP LEFT CORNER.

REVERSE TABLE

REVERSE "A"	LANDSCAPE / OPEN SPACE	0.134 ACRES
REVERSE "B"	LANDSCAPE / OPEN SPACE	0.134 ACRES
REVERSE "C"	LANDSCAPE / OPEN SPACE	0.134 ACRES
REVERSE "D"	LANDSCAPE / OPEN SPACE	0.134 ACRES
REVERSE "E"	LANDSCAPE / OPEN SPACE	0.134 ACRES
REVERSE "F"	LANDSCAPE / OPEN SPACE	0.134 ACRES
REVERSE "G"	LANDSCAPE / OPEN SPACE	0.134 ACRES
REVERSE "H"	LANDSCAPE / OPEN SPACE	0.134 ACRES
REVERSE "I"	LANDSCAPE / OPEN SPACE	0.134 ACRES
REVERSE "J"	LANDSCAPE / OPEN SPACE	0.134 ACRES
REVERSE "K"	LANDSCAPE / OPEN SPACE	0.134 ACRES
REVERSE "L"	LANDSCAPE / OPEN SPACE	0.134 ACRES
REVERSE "M"	LANDSCAPE / OPEN SPACE	0.134 ACRES
REVERSE "N"	LANDSCAPE / OPEN SPACE	0.134 ACRES
REVERSE "O"	LANDSCAPE / OPEN SPACE	0.134 ACRES
REVERSE "P"	LANDSCAPE / OPEN SPACE	0.134 ACRES
REVERSE "Q"	LANDSCAPE / OPEN SPACE	0.134 ACRES
REVERSE "R"	LANDSCAPE / OPEN SPACE	0.134 ACRES
REVERSE "S"	LANDSCAPE / OPEN SPACE	0.134 ACRES
REVERSE "T"	LANDSCAPE / OPEN SPACE	0.134 ACRES
REVERSE "U"	LANDSCAPE / OPEN SPACE	0.134 ACRES
REVERSE "V"	LANDSCAPE / OPEN SPACE	0.134 ACRES
REVERSE "W"	LANDSCAPE / OPEN SPACE	0.134 ACRES
REVERSE "X"	LANDSCAPE / OPEN SPACE	0.134 ACRES
REVERSE "Y"	LANDSCAPE / OPEN SPACE	0.134 ACRES
REVERSE "Z"	LANDSCAPE / OPEN SPACE	0.134 ACRES
TOTAL		21.400 ACRES