

PLAT RECORDING SHEET

PLAT NAME: LaCenterra at Cinco Ranch, Sec. 2

PLAT NO: _____

ACREAGE: 11.239

LEAGUE: Thomas Hobermaker Survey

ABSTRACT NUMBER: 190

NUMBER OF BLOCKS: 1

NUMBER OF LOTS: 0

NUMBER OF RESERVES: 1

OWNERS: LaCenterra at Cinco Ranch, LLC

(DEPUTY CLERK)



FIELD FACILITIES	DISTRICT PHONES
WATER	CINCO RANCH, NO. 13
SEWER	WILLOW CREEK DRAINAGE DISTRICT
POWER	PORTER ED
TELEPHONE	PORTER ED
CITY OR CITY ED	PORTER ED
UNIFORM CO.	PORTER ED

LaCenteria

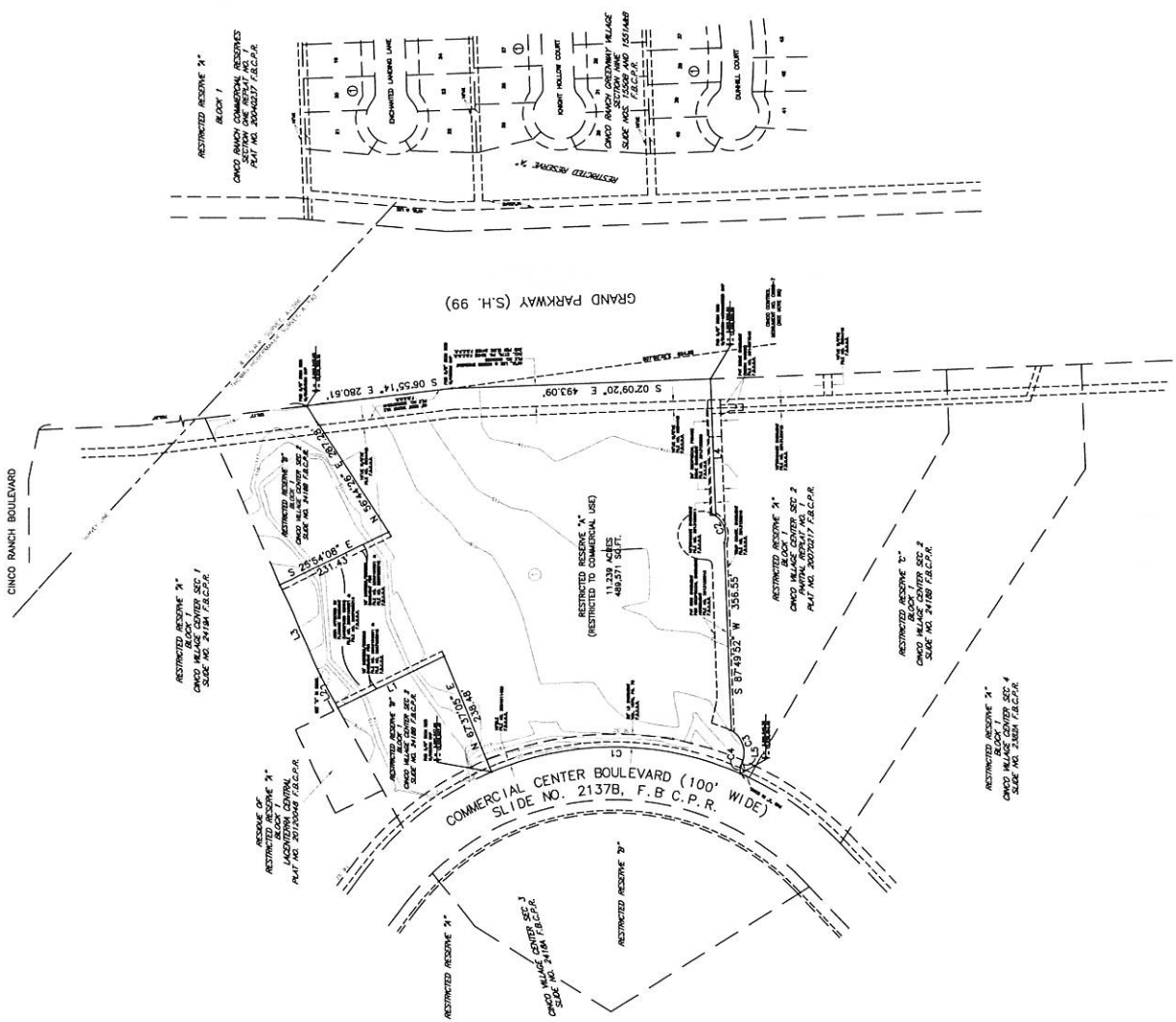
At CincoRanch

SEC. 2

A SUBDIVISION OF 11,239 ACRES BEING A PARTIAL REPLAT OF RESTRICTED RESERVE "A" OF CINCO RANCH SEC. 2, PARTIAL REPLAT NO. 1 AS RECORDED AT PLAT NO. 20070217, F.B.C.P.R., AND A PARTIAL REPLAT OF RESTRICTED RESERVE "A" OF LACENTERRA CENTRAL AS RECORDED AT PLAT NO. 20120048, F.B.C.P.R., IN THE THOMAS HOBERMAN TRACT NO. 190, FORT BEND COUNTY, TEXAS.

PURPOSE OF REPLAT: TO CREATE A SINGLE COMMERCIAL RESERVE BLOCK.
 SCALE: 1"=100'
 MARCH, 2015

1115 BLUNDELL PARKWAY
 HOUSTON, TEXAS 77055-1500



NO.	LINE	BEARING	DISTANCE
L1	N25°54'00"W	201.11'	
L2	N81°15'51"E	37.51'	
L3	N05°35'27"E	80.64'	
L4	N89°11'00"W	201.11'	
L5	S88°52'50"W	171.4'	

NO.	ARC	ANGLE	CHORD BEG.	CHORD END
C1	48.97°	48.97°	100.00'	100.00'
C2	58.12°	58.12°	100.00'	100.00'
C3	69.23°	69.23°	100.00'	100.00'
C4	14.97°	14.97°	100.00'	100.00'

