

PLAT RECORDING SHEET

PLAT NAME: Fieldstone, Sec. 9

PLAT NO: _____

ACREAGE: 2.815

LEAGUE: John Frederick Survey

ABSTRACT NUMBER: 172

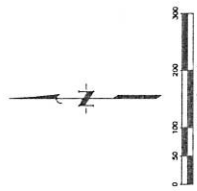
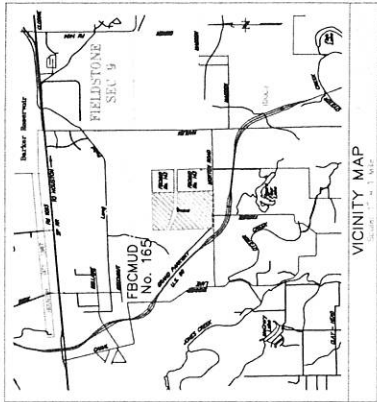
NUMBER OF BLOCKS: 0

NUMBER OF LOTS: 0

NUMBER OF RESERVES: 2

OWNERS: Fieldstone (Houston) ASLI VI, LLLP

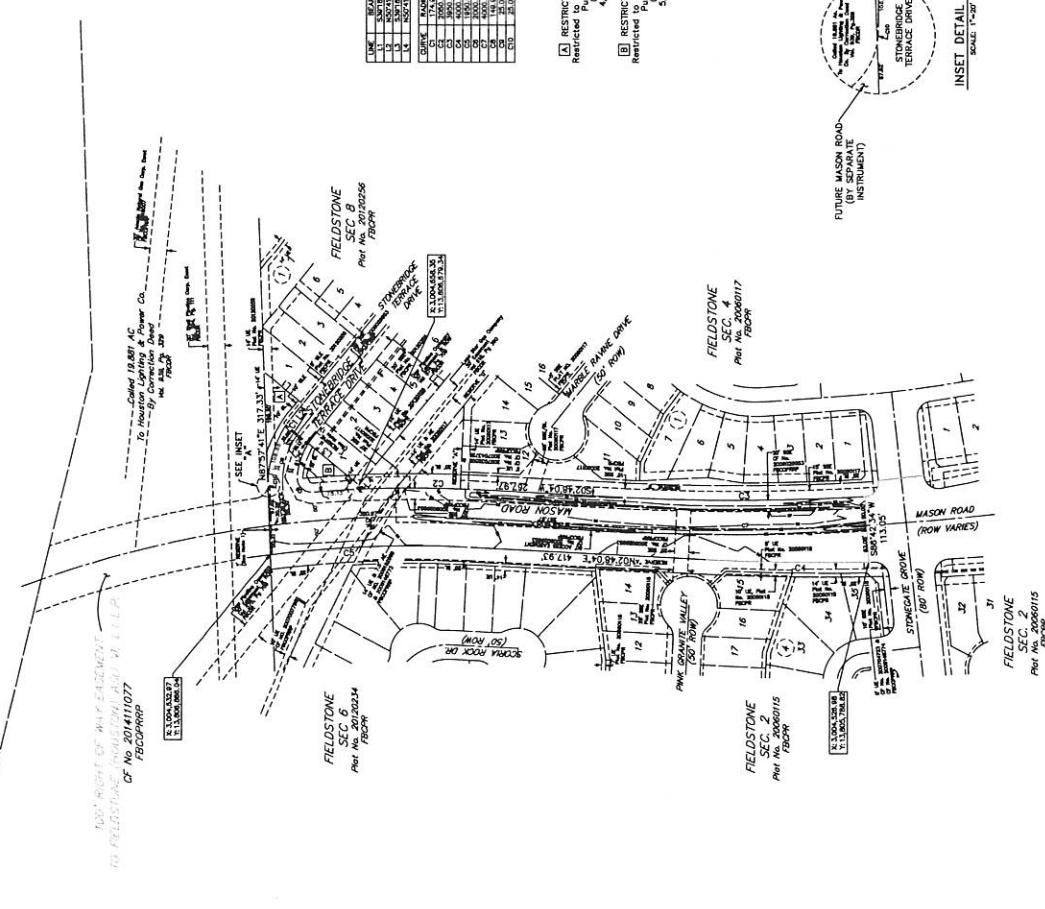
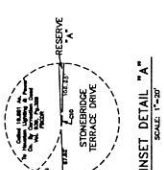
(DEPUTY CLERK)



- Section Notes:**
- 1) All easements shown on this plat are shown in accordance with the plat and are subject to the terms and conditions set forth in the applicable instrument(s) referenced herein.
 - 2) All easements shown on this plat are shown in accordance with the plat and are subject to the terms and conditions set forth in the applicable instrument(s) referenced herein.
 - 3) All easements shown on this plat are shown in accordance with the plat and are subject to the terms and conditions set forth in the applicable instrument(s) referenced herein.
 - 4) All easements shown on this plat are shown in accordance with the plat and are subject to the terms and conditions set forth in the applicable instrument(s) referenced herein.
 - 5) All easements shown on this plat are shown in accordance with the plat and are subject to the terms and conditions set forth in the applicable instrument(s) referenced herein.
 - 6) All easements shown on this plat are shown in accordance with the plat and are subject to the terms and conditions set forth in the applicable instrument(s) referenced herein.
 - 7) All easements shown on this plat are shown in accordance with the plat and are subject to the terms and conditions set forth in the applicable instrument(s) referenced herein.
 - 8) All easements shown on this plat are shown in accordance with the plat and are subject to the terms and conditions set forth in the applicable instrument(s) referenced herein.
 - 9) All easements shown on this plat are shown in accordance with the plat and are subject to the terms and conditions set forth in the applicable instrument(s) referenced herein.
 - 10) All easements shown on this plat are shown in accordance with the plat and are subject to the terms and conditions set forth in the applicable instrument(s) referenced herein.
 - 11) All easements shown on this plat are shown in accordance with the plat and are subject to the terms and conditions set forth in the applicable instrument(s) referenced herein.
 - 12) All easements shown on this plat are shown in accordance with the plat and are subject to the terms and conditions set forth in the applicable instrument(s) referenced herein.
 - 13) All easements shown on this plat are shown in accordance with the plat and are subject to the terms and conditions set forth in the applicable instrument(s) referenced herein.
 - 14) All easements shown on this plat are shown in accordance with the plat and are subject to the terms and conditions set forth in the applicable instrument(s) referenced herein.
 - 15) All easements shown on this plat are shown in accordance with the plat and are subject to the terms and conditions set forth in the applicable instrument(s) referenced herein.
 - 16) All easements shown on this plat are shown in accordance with the plat and are subject to the terms and conditions set forth in the applicable instrument(s) referenced herein.
 - 17) All easements shown on this plat are shown in accordance with the plat and are subject to the terms and conditions set forth in the applicable instrument(s) referenced herein.
 - 18) All easements shown on this plat are shown in accordance with the plat and are subject to the terms and conditions set forth in the applicable instrument(s) referenced herein.
 - 19) All easements shown on this plat are shown in accordance with the plat and are subject to the terms and conditions set forth in the applicable instrument(s) referenced herein.
 - 20) All easements shown on this plat are shown in accordance with the plat and are subject to the terms and conditions set forth in the applicable instrument(s) referenced herein.

LOT	AREA (SQ. FT.)	AREA (AC.)
1	10,000.00	0.230
2	10,000.00	0.230
3	10,000.00	0.230
4	10,000.00	0.230
5	10,000.00	0.230
6	10,000.00	0.230
7	10,000.00	0.230
8	10,000.00	0.230
9	10,000.00	0.230
10	10,000.00	0.230
11	10,000.00	0.230
12	10,000.00	0.230
13	10,000.00	0.230
14	10,000.00	0.230
15	10,000.00	0.230
16	10,000.00	0.230
17	10,000.00	0.230
18	10,000.00	0.230
19	10,000.00	0.230
20	10,000.00	0.230
21	10,000.00	0.230
22	10,000.00	0.230
23	10,000.00	0.230
24	10,000.00	0.230
25	10,000.00	0.230
26	10,000.00	0.230
27	10,000.00	0.230
28	10,000.00	0.230
29	10,000.00	0.230
30	10,000.00	0.230
31	10,000.00	0.230
32	10,000.00	0.230
33	10,000.00	0.230
34	10,000.00	0.230
35	10,000.00	0.230
36	10,000.00	0.230
37	10,000.00	0.230
38	10,000.00	0.230
39	10,000.00	0.230
40	10,000.00	0.230
41	10,000.00	0.230
42	10,000.00	0.230
43	10,000.00	0.230
44	10,000.00	0.230
45	10,000.00	0.230
46	10,000.00	0.230
47	10,000.00	0.230
48	10,000.00	0.230
49	10,000.00	0.230
50	10,000.00	0.230
51	10,000.00	0.230
52	10,000.00	0.230
53	10,000.00	0.230
54	10,000.00	0.230
55	10,000.00	0.230
56	10,000.00	0.230
57	10,000.00	0.230
58	10,000.00	0.230
59	10,000.00	0.230
60	10,000.00	0.230
61	10,000.00	0.230
62	10,000.00	0.230
63	10,000.00	0.230
64	10,000.00	0.230
65	10,000.00	0.230
66	10,000.00	0.230
67	10,000.00	0.230
68	10,000.00	0.230
69	10,000.00	0.230
70	10,000.00	0.230
71	10,000.00	0.230
72	10,000.00	0.230
73	10,000.00	0.230
74	10,000.00	0.230
75	10,000.00	0.230
76	10,000.00	0.230
77	10,000.00	0.230
78	10,000.00	0.230
79	10,000.00	0.230
80	10,000.00	0.230
81	10,000.00	0.230
82	10,000.00	0.230
83	10,000.00	0.230
84	10,000.00	0.230
85	10,000.00	0.230
86	10,000.00	0.230
87	10,000.00	0.230
88	10,000.00	0.230
89	10,000.00	0.230
90	10,000.00	0.230
91	10,000.00	0.230
92	10,000.00	0.230
93	10,000.00	0.230
94	10,000.00	0.230
95	10,000.00	0.230
96	10,000.00	0.230
97	10,000.00	0.230
98	10,000.00	0.230
99	10,000.00	0.230
100	10,000.00	0.230

- RESTRICTED RESERVE "A"
Restricted Purpose Only
4,925 Sq. Ft.
- RESTRICTED RESERVE "B"
Restricted to Landscaping/Open Space
Purpose Only
5,124 Sq. Ft.



FIELDSTONE

SEC 9

A SUBDIVISION OF 2.815 ACRES OF LAND
OUT OF THE
JOHN FREDERICK SURVEY, ABSTRACT No. 172
FORT BEND COUNTY, TEXAS
0 LOTS 2 RESERVES 0 BLOCKS
SEPTEMBER 2012

DEVELOPER/OWNER:
FIELDSTONE (HOUSTON) ASU V, L.L.P.
SUITE 200
10000 WESTHEIMER
HOUSTON, TEXAS 77036
713.281.1000

ENGINEER:
J.C. BRESCHARTER, INC.
10000 WESTHEIMER
HOUSTON, TEXAS 77036
713.281.1000