

**PLAT RECORDING SHEET**

**PLAT NAME:** Lakes of Bella Terra, Sec. 32

**PLAT NO:** \_\_\_\_\_

**ACREAGE:** 16.808

**LEAGUE:** Joel E. McCrary Survey

**ABSTRACT NUMBER:** 403

**NUMBER OF BLOCKS:** 2

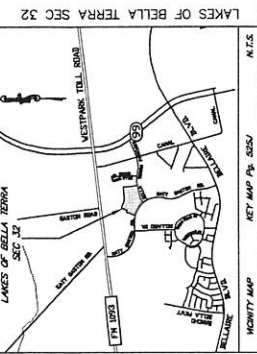
**NUMBER OF LOTS:** 58

**NUMBER OF RESERVES:** 3

**OWNERS:** L.O.B. Limited Partnership

\_\_\_\_\_  
(DEPUTY CLERK)





LAKES OF BELLA TERRA SEC 32

KEY MAP PG. 3254  
N.T.S.

MOHAWIT MAP

1 IN. = 40 FT.

GRAPHIC SCALE

1" = 40 FT.

1" = 40 FT.

1" = 40 FT.

1" = 40 FT.

1" = 40 FT.

1" = 40 FT.

1" = 40 FT.

1" = 40 FT.

1" = 40 FT.

1" = 40 FT.

1" = 40 FT.

1" = 40 FT.

1" = 40 FT.

1" = 40 FT.

1" = 40 FT.

1" = 40 FT.

1" = 40 FT.

1" = 40 FT.

1" = 40 FT.

1" = 40 FT.

1" = 40 FT.

1" = 40 FT.

1" = 40 FT.

1" = 40 FT.

CURVE	RADIUS	LENGTH	CHORD	BEARING	MARK
C1	100.00	157.08	100.00	113.01°	100.00
C2	100.00	157.08	100.00	113.01°	100.00
C3	100.00	157.08	100.00	113.01°	100.00
C4	100.00	157.08	100.00	113.01°	100.00
C5	100.00	157.08	100.00	113.01°	100.00
C6	100.00	157.08	100.00	113.01°	100.00
C7	100.00	157.08	100.00	113.01°	100.00
C8	100.00	157.08	100.00	113.01°	100.00
C9	100.00	157.08	100.00	113.01°	100.00
C10	100.00	157.08	100.00	113.01°	100.00
C11	100.00	157.08	100.00	113.01°	100.00
C12	100.00	157.08	100.00	113.01°	100.00
C13	100.00	157.08	100.00	113.01°	100.00
C14	100.00	157.08	100.00	113.01°	100.00
C15	100.00	157.08	100.00	113.01°	100.00
C16	100.00	157.08	100.00	113.01°	100.00
C17	100.00	157.08	100.00	113.01°	100.00
C18	100.00	157.08	100.00	113.01°	100.00
C19	100.00	157.08	100.00	113.01°	100.00
C20	100.00	157.08	100.00	113.01°	100.00
C21	100.00	157.08	100.00	113.01°	100.00
C22	100.00	157.08	100.00	113.01°	100.00
C23	100.00	157.08	100.00	113.01°	100.00
C24	100.00	157.08	100.00	113.01°	100.00
C25	100.00	157.08	100.00	113.01°	100.00
C26	100.00	157.08	100.00	113.01°	100.00
C27	100.00	157.08	100.00	113.01°	100.00
C28	100.00	157.08	100.00	113.01°	100.00
C29	100.00	157.08	100.00	113.01°	100.00
C30	100.00	157.08	100.00	113.01°	100.00
C31	100.00	157.08	100.00	113.01°	100.00
C32	100.00	157.08	100.00	113.01°	100.00
C33	100.00	157.08	100.00	113.01°	100.00
C34	100.00	157.08	100.00	113.01°	100.00
C35	100.00	157.08	100.00	113.01°	100.00
C36	100.00	157.08	100.00	113.01°	100.00
C37	100.00	157.08	100.00	113.01°	100.00
C38	100.00	157.08	100.00	113.01°	100.00
C39	100.00	157.08	100.00	113.01°	100.00
C40	100.00	157.08	100.00	113.01°	100.00
C41	100.00	157.08	100.00	113.01°	100.00
C42	100.00	157.08	100.00	113.01°	100.00
C43	100.00	157.08	100.00	113.01°	100.00
C44	100.00	157.08	100.00	113.01°	100.00
C45	100.00	157.08	100.00	113.01°	100.00
C46	100.00	157.08	100.00	113.01°	100.00
C47	100.00	157.08	100.00	113.01°	100.00
C48	100.00	157.08	100.00	113.01°	100.00
C49	100.00	157.08	100.00	113.01°	100.00
C50	100.00	157.08	100.00	113.01°	100.00

LINE	BEARING	LENGTH
L1	S84.52°E	12.29
L2	S84.52°E	12.29
L3	S84.52°E	12.29
L4	S84.52°E	12.29
L5	S84.52°E	12.29
L6	S84.52°E	12.29
L7	S84.52°E	12.29
L8	S84.52°E	12.29
L9	S84.52°E	12.29
L10	S84.52°E	12.29
L11	S84.52°E	12.29
L12	S84.52°E	12.29
L13	S84.52°E	12.29
L14	S84.52°E	12.29
L15	S84.52°E	12.29
L16	S84.52°E	12.29
L17	S84.52°E	12.29
L18	S84.52°E	12.29
L19	S84.52°E	12.29
L20	S84.52°E	12.29
L21	S84.52°E	12.29
L22	S84.52°E	12.29
L23	S84.52°E	12.29
L24	S84.52°E	12.29
L25	S84.52°E	12.29
L26	S84.52°E	12.29
L27	S84.52°E	12.29
L28	S84.52°E	12.29
L29	S84.52°E	12.29
L30	S84.52°E	12.29
L31	S84.52°E	12.29
L32	S84.52°E	12.29
L33	S84.52°E	12.29
L34	S84.52°E	12.29
L35	S84.52°E	12.29
L36	S84.52°E	12.29
L37	S84.52°E	12.29
L38	S84.52°E	12.29
L39	S84.52°E	12.29
L40	S84.52°E	12.29
L41	S84.52°E	12.29
L42	S84.52°E	12.29
L43	S84.52°E	12.29
L44	S84.52°E	12.29
L45	S84.52°E	12.29
L46	S84.52°E	12.29
L47	S84.52°E	12.29
L48	S84.52°E	12.29
L49	S84.52°E	12.29
L50	S84.52°E	12.29
L51	S84.52°E	12.29
L52	S84.52°E	12.29
L53	S84.52°E	12.29
L54	S84.52°E	12.29
L55	S84.52°E	12.29
L56	S84.52°E	12.29
L57	S84.52°E	12.29
L58	S84.52°E	12.29
L59	S84.52°E	12.29
L60	S84.52°E	12.29
L61	S84.52°E	12.29
L62	S84.52°E	12.29
L63	S84.52°E	12.29
L64	S84.52°E	12.29
L65	S84.52°E	12.29
L66	S84.52°E	12.29
L67	S84.52°E	12.29
L68	S84.52°E	12.29
L69	S84.52°E	12.29
L70	S84.52°E	12.29
L71	S84.52°E	12.29
L72	S84.52°E	12.29
L73	S84.52°E	12.29
L74	S84.52°E	12.29
L75	S84.52°E	12.29
L76	S84.52°E	12.29
L77	S84.52°E	12.29
L78	S84.52°E	12.29
L79	S84.52°E	12.29
L80	S84.52°E	12.29
L81	S84.52°E	12.29
L82	S84.52°E	12.29
L83	S84.52°E	12.29
L84	S84.52°E	12.29
L85	S84.52°E	12.29
L86	S84.52°E	12.29
L87	S84.52°E	12.29
L88	S84.52°E	12.29
L89	S84.52°E	12.29
L90	S84.52°E	12.29
L91	S84.52°E	12.29
L92	S84.52°E	12.29
L93	S84.52°E	12.29
L94	S84.52°E	12.29
L95	S84.52°E	12.29
L96	S84.52°E	12.29
L97	S84.52°E	12.29
L98	S84.52°E	12.29
L99	S84.52°E	12.29
L100	S84.52°E	12.29

# LAKES OF BELLA TERRA SEC 32

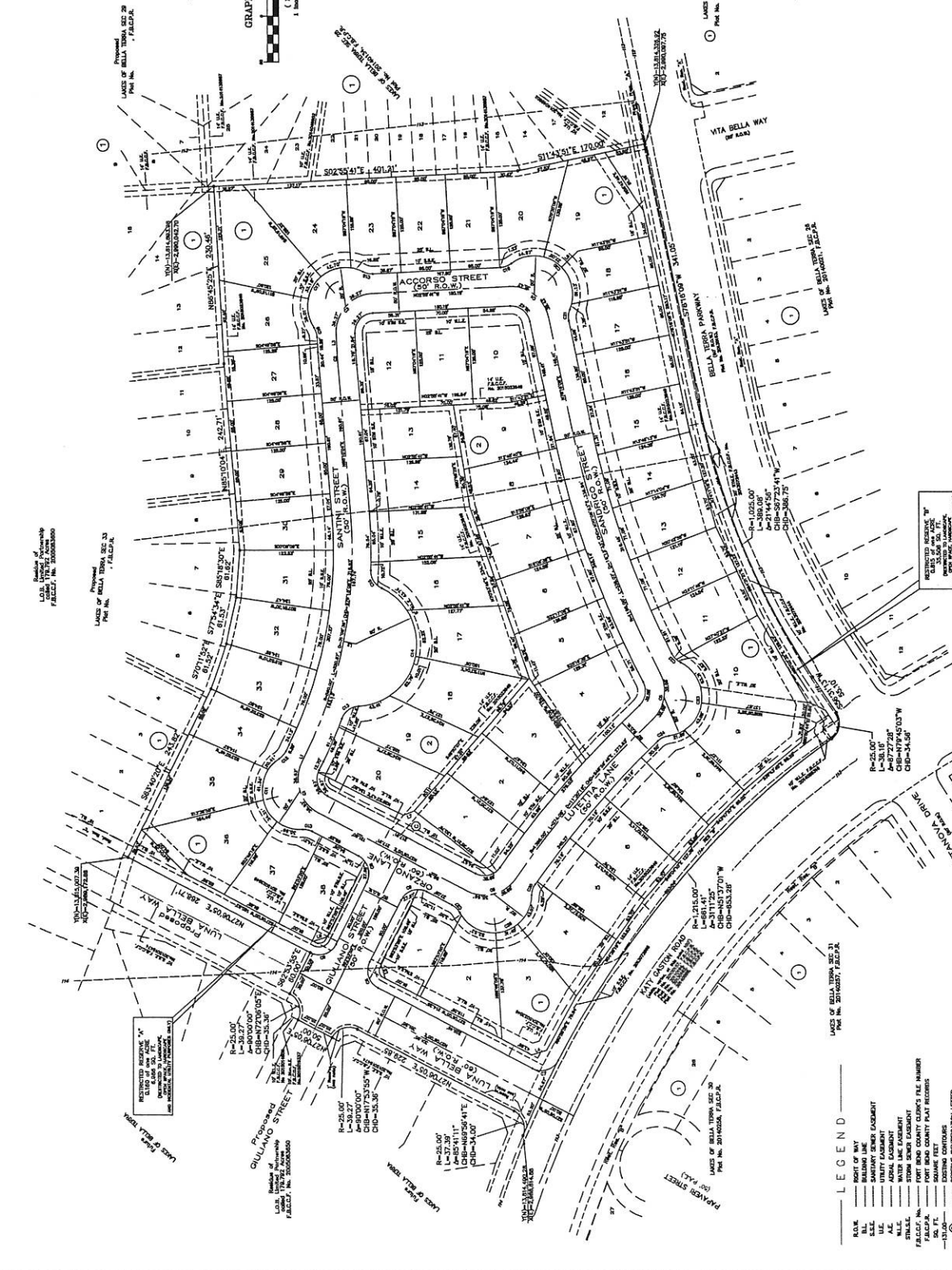
A SUBDIVISION OF 16,808 ACRES OF LAND BEING SITUATED IN THE JOEL E. GARDNER SUBDIVISION, ABSTRACT NO. 403 FORT BEND COUNTY, TEXAS

2 BLOCKS 3 RESERVES DATE: FEBRUARY, 2015

58 LOTS SCALE: 1"=40'

OWNERS:  
U.S. United Property  
7700 Westpark Toll Road  
Houston, Texas 77063  
(713) 862-0000

PREPARED BY:  
MENCIMARK ENGINEERING CORPORATION  
Consulting Engineers and Surveyors  
1400 Westpark Toll Road, Suite 500  
Houston, Texas 77067 U.S.A.  
(713) 862-0000 Fax (713) 862-3004  
Texas Board of Professional Engineers  
Registration No. 100000000  
Professional Engineer License No. 100000000



RESERVE	LOT	AREA	CLASS	INDIVIDUAL UTILITIES, LANDSCAPE AND OPEN SPACE IMPROVEMENTS ONLY
1	1	0.12	0.12	
2	2	0.12	0.12	
3	3	0.12	0.12	
4	4	0.12	0.12	
5	5	0.12	0.12	
6	6	0.12	0.12	
7	7	0.12	0.12	
8	8	0.12	0.12	
9	9	0.12	0.12	
10	10	0.12	0.12	
11	11	0.12	0.12	
12	12	0.12	0.12	
13	13	0.12	0.12	
14	14	0.12	0.12	
15	15	0.12	0.12	
16	16	0.12	0.12	
17	17	0.12	0.12	
18	18	0.12	0.12	
19	19	0.12	0.12	
20	20	0.12	0.12	
21	21	0.12	0.12	
22	22	0.12	0.12	
23	23	0.12	0.12	
24	24	0.12	0.12	
25	25	0.12	0.12	
26	26	0.12	0.12	
27	27	0.12	0.12	
28	28	0.12	0.12	
29	29	0.12	0.12	
30	30	0.12	0.12	
31	31	0.12	0.12	
32	32	0.12	0.12	
33	33	0.12	0.12	
34	34	0.12	0.12	
35	35	0.12	0.12	
36	36	0.12	0.12	
37	37	0.12	0.12	
38	38	0.12	0.12	
39	39	0.12	0.12	
40	40	0.12	0.12	
41	41	0.12	0.12	
42	42	0.12	0.12	
43	43	0.12	0.12	
44	44	0.12	0.12	
45	45	0.12	0.12	
46	46	0.12	0.12	
47	47	0.12	0.12	
48	48	0.12	0.12	
49	49	0.12	0.12	
50	50	0.12	0.12	
51	51	0.12	0.12	
52	52	0.12	0.12	
53	53	0.12	0.12	
54	54	0.12	0.12	
55	55	0.12	0.12	
56	56	0.12	0.12	
57	57	0.12	0.12	
58	58	0.12	0.12	

RESERVE	LOT	AREA	CLASS	INDIVIDUAL UTILITIES, LANDSCAPE AND OPEN SPACE IMPROVEMENTS ONLY
1	1	0.12	0.12	
2	2	0.12	0.12	
3	3	0.12	0.12	
4	4	0.12	0.12	
5	5	0.12	0.12	
6	6	0.12	0.12	
7	7	0.12	0.12	
8	8	0.12	0.12	
9	9	0.12	0.12	
10	10	0.12	0.12	
11	11	0.12	0.12	
12	12	0.12	0.12	
13	13	0.12	0	