

PLAT RECORDING SHEET

PLAT NAME: Precinct Line Boat and RV

PLAT NO: _____

ACREAGE: 7.6289

LEAGUE: James Knight and W. C. White League & Randall Jones League

ABSTRACT NUMBER: 46, 42

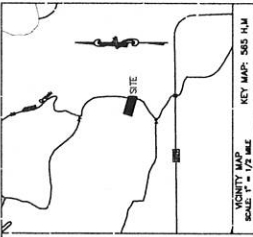
NUMBER OF BLOCKS: 1

NUMBER OF LOTS: 0

NUMBER OF RESERVES: 2

OWNERS: Michael L. Weiss

(DEPUTY CLERK)



1. I, Michael L. Weiss, Professional Engineer, registered in the State of Texas, do hereby certify that this plat meets the requirements of the Texas Surveying Act, Chapter 161, Texas Government Code, and the rules and regulations of the Board of Professional Engineers, Registered Professional Surveyors, and Professional Land Surveyors, State of Texas, and that the same are correct and true to the best of my knowledge and belief.

APPROVED BY THE COMMISSIONER OF FORT BEND COUNTY, TEXAS, THIS _____ DAY OF _____ 2015.

LINE TABLE	REMARKS
1	SECTION 1
2	SECTION 2
3	SECTION 3
4	SECTION 4
5	SECTION 5
6	SECTION 6
7	SECTION 7
8	SECTION 8
9	SECTION 9
10	SECTION 10
11	SECTION 11
12	SECTION 12

APPROVED BY THE COMMISSIONER OF FORT BEND COUNTY, TEXAS, THIS _____ DAY OF _____ 2015.

APPROVED BY THE COMMISSIONER OF FORT BEND COUNTY, TEXAS, THIS _____ DAY OF _____ 2015.

APPROVED BY THE COMMISSIONER OF FORT BEND COUNTY, TEXAS, THIS _____ DAY OF _____ 2015.

APPROVED BY THE COMMISSIONER OF FORT BEND COUNTY, TEXAS, THIS _____ DAY OF _____ 2015.

APPROVED BY THE COMMISSIONER OF FORT BEND COUNTY, TEXAS, THIS _____ DAY OF _____ 2015.

APPROVED BY THE COMMISSIONER OF FORT BEND COUNTY, TEXAS, THIS _____ DAY OF _____ 2015.

APPROVED BY THE COMMISSIONER OF FORT BEND COUNTY, TEXAS, THIS _____ DAY OF _____ 2015.

APPROVED BY THE COMMISSIONER OF FORT BEND COUNTY, TEXAS, THIS _____ DAY OF _____ 2015.

APPROVED BY THE COMMISSIONER OF FORT BEND COUNTY, TEXAS, THIS _____ DAY OF _____ 2015.

APPROVED BY THE COMMISSIONER OF FORT BEND COUNTY, TEXAS, THIS _____ DAY OF _____ 2015.

APPROVED BY THE COMMISSIONER OF FORT BEND COUNTY, TEXAS, THIS _____ DAY OF _____ 2015.

APPROVED BY THE COMMISSIONER OF FORT BEND COUNTY, TEXAS, THIS _____ DAY OF _____ 2015.

APPROVED BY THE COMMISSIONER OF FORT BEND COUNTY, TEXAS, THIS _____ DAY OF _____ 2015.

APPROVED BY THE COMMISSIONER OF FORT BEND COUNTY, TEXAS, THIS _____ DAY OF _____ 2015.

APPROVED BY THE COMMISSIONER OF FORT BEND COUNTY, TEXAS, THIS _____ DAY OF _____ 2015.

APPROVED BY THE COMMISSIONER OF FORT BEND COUNTY, TEXAS, THIS _____ DAY OF _____ 2015.

APPROVED BY THE COMMISSIONER OF FORT BEND COUNTY, TEXAS, THIS _____ DAY OF _____ 2015.

APPROVED BY THE COMMISSIONER OF FORT BEND COUNTY, TEXAS, THIS _____ DAY OF _____ 2015.

APPROVED BY THE COMMISSIONER OF FORT BEND COUNTY, TEXAS, THIS _____ DAY OF _____ 2015.

APPROVED BY THE COMMISSIONER OF FORT BEND COUNTY, TEXAS, THIS _____ DAY OF _____ 2015.

APPROVED BY THE COMMISSIONER OF FORT BEND COUNTY, TEXAS, THIS _____ DAY OF _____ 2015.

APPROVED BY THE COMMISSIONER OF FORT BEND COUNTY, TEXAS, THIS _____ DAY OF _____ 2015.

APPROVED BY THE COMMISSIONER OF FORT BEND COUNTY, TEXAS, THIS _____ DAY OF _____ 2015.

APPROVED BY THE COMMISSIONER OF FORT BEND COUNTY, TEXAS, THIS _____ DAY OF _____ 2015.

APPROVED BY THE COMMISSIONER OF FORT BEND COUNTY, TEXAS, THIS _____ DAY OF _____ 2015.

APPROVED BY THE COMMISSIONER OF FORT BEND COUNTY, TEXAS, THIS _____ DAY OF _____ 2015.

APPROVED BY THE COMMISSIONER OF FORT BEND COUNTY, TEXAS, THIS _____ DAY OF _____ 2015.

APPROVED BY THE COMMISSIONER OF FORT BEND COUNTY, TEXAS, THIS _____ DAY OF _____ 2015.

APPROVED BY THE COMMISSIONER OF FORT BEND COUNTY, TEXAS, THIS _____ DAY OF _____ 2015.

APPROVED BY THE COMMISSIONER OF FORT BEND COUNTY, TEXAS, THIS _____ DAY OF _____ 2015.

APPROVED BY THE COMMISSIONER OF FORT BEND COUNTY, TEXAS, THIS _____ DAY OF _____ 2015.

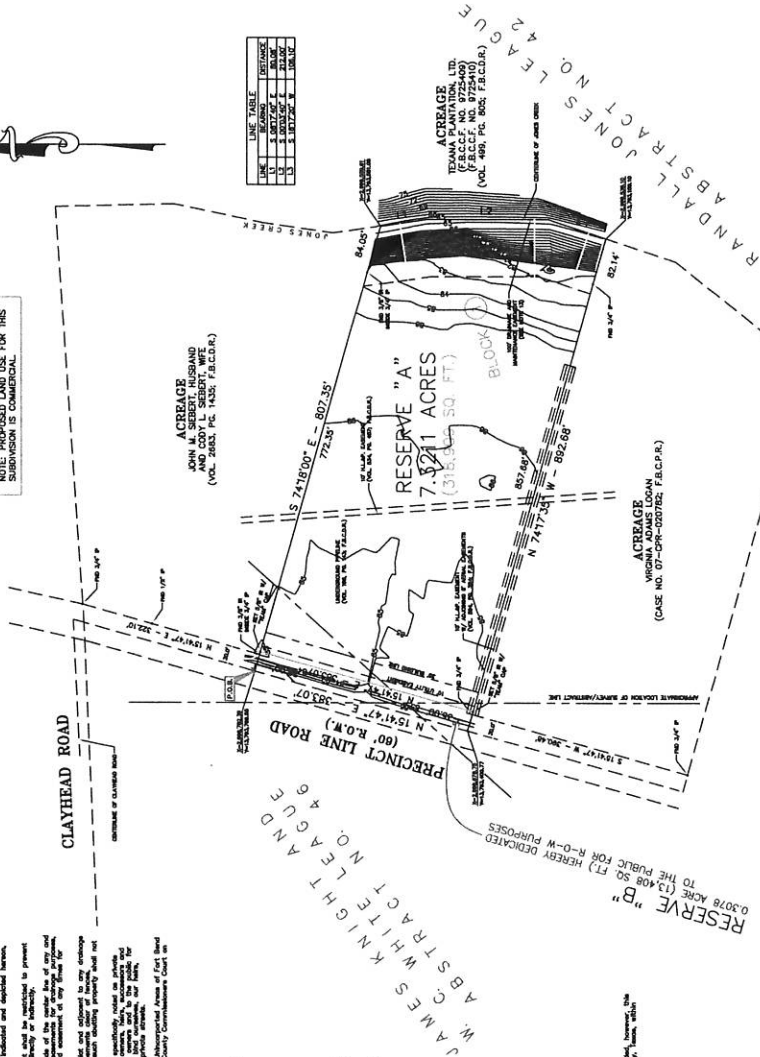
APPROVED BY THE COMMISSIONER OF FORT BEND COUNTY, TEXAS, THIS _____ DAY OF _____ 2015.

APPROVED BY THE COMMISSIONER OF FORT BEND COUNTY, TEXAS, THIS _____ DAY OF _____ 2015.

UNRESTRICTED RESERVE TABLE	
A	7.3211 ACRES (318,899 SQ. FT.)
B	0.3078 ACRES (13,408 SQ. FT.)

NOTE: PROPOSED LAND USE FOR THIS SUBDIVISION IS COMMERCIAL.

LEGEND:
 - 1/8" = 100 FEET
 - 1/4" = 200 FEET
 - 1/2" = 400 FEET
 - 3/4" = 600 FEET
 - 1" = 800 FEET
 - 1 1/4" = 1,000 FEET
 - 1 1/2" = 1,200 FEET
 - 1 3/4" = 1,400 FEET
 - 2" = 1,600 FEET
 - 2 1/4" = 1,800 FEET
 - 2 1/2" = 2,000 FEET
 - 2 3/4" = 2,200 FEET
 - 3" = 2,400 FEET
 - 3 1/4" = 2,600 FEET
 - 3 1/2" = 2,800 FEET
 - 3 3/4" = 3,000 FEET
 - 4" = 3,200 FEET
 - 4 1/4" = 3,400 FEET
 - 4 1/2" = 3,600 FEET
 - 4 3/4" = 3,800 FEET
 - 5" = 4,000 FEET



STATE OF TEXAS: I, Michael L. Weiss, Professional Engineer, registered in the State of Texas, do hereby certify that this plat meets the requirements of the Texas Surveying Act, Chapter 161, Texas Government Code, and the rules and regulations of the Board of Professional Engineers, Registered Professional Surveyors, and Professional Land Surveyors, State of Texas, and that the same are correct and true to the best of my knowledge and belief.

APPROVED BY THE COMMISSIONER OF FORT BEND COUNTY, TEXAS, THIS _____ DAY OF _____ 2015.

APPROVED BY THE COMMISSIONER OF FORT BEND COUNTY, TEXAS, THIS _____ DAY OF _____ 2015.

APPROVED BY THE COMMISSIONER OF FORT BEND COUNTY, TEXAS, THIS _____ DAY OF _____ 2015.

APPROVED BY THE COMMISSIONER OF FORT BEND COUNTY, TEXAS, THIS _____ DAY OF _____ 2015.

APPROVED BY THE COMMISSIONER OF FORT BEND COUNTY, TEXAS, THIS _____ DAY OF _____ 2015.

APPROVED BY THE COMMISSIONER OF FORT BEND COUNTY, TEXAS, THIS _____ DAY OF _____ 2015.

APPROVED BY THE COMMISSIONER OF FORT BEND COUNTY, TEXAS, THIS _____ DAY OF _____ 2015.

APPROVED BY THE COMMISSIONER OF FORT BEND COUNTY, TEXAS, THIS _____ DAY OF _____ 2015.

APPROVED BY THE COMMISSIONER OF FORT BEND COUNTY, TEXAS, THIS _____ DAY OF _____ 2015.

PRECINCT LINE BOAT AND RV

1 BLOCK - 2 RESERVES
 A SUBDIVISION OF 7.6289 ACRES
 IN THE JAMES KNIGHT AND W.C. WHITE LEAGUE,
 AND IN THE RANDALL JONES LEAGUE,
 FORT BEND COUNTY, TEXAS

~ OFFERS ~
 Michael L. Weiss
 P.O. Box 1112
 Pflugerville, Texas 77441
 Phone (817) 798-4441

~ SURVEYOR/ENGINEER ~
 TEXAS ENGINEERING AND MAPPING CO.
 18810 Century Drive
 Stafford, Texas 77477
 Phone (817) 551-1111
 FAX (817) 551-1111
 MARCH 5, 2015

NOTES:
 1) THESE SHALL BE A 1.5 FEET BUILDING SETBACK LINE ON ALL SIDE PROPERTY LINES.
 2) THE BOUNDARY BETWEEN RESERVE "A" AND RESERVE "B" SHALL BE THE CENTERLINE OF THE PRECINCT LINE ROAD.
 3) THE BOUNDARY BETWEEN RESERVE "A" AND RESERVE "B" SHALL BE THE CENTERLINE OF THE PRECINCT LINE ROAD.
 4) THE BOUNDARY BETWEEN RESERVE "A" AND RESERVE "B" SHALL BE THE CENTERLINE OF THE PRECINCT LINE ROAD.
 5) THE BOUNDARY BETWEEN RESERVE "A" AND RESERVE "B" SHALL BE THE CENTERLINE OF THE PRECINCT LINE ROAD.
 6) THE BOUNDARY BETWEEN RESERVE "A" AND RESERVE "B" SHALL BE THE CENTERLINE OF THE PRECINCT LINE ROAD.
 7) THE BOUNDARY BETWEEN RESERVE "A" AND RESERVE "B" SHALL BE THE CENTERLINE OF THE PRECINCT LINE ROAD.
 8) THE BOUNDARY BETWEEN RESERVE "A" AND RESERVE "B" SHALL BE THE CENTERLINE OF THE PRECINCT LINE ROAD.
 9) THE BOUNDARY BETWEEN RESERVE "A" AND RESERVE "B" SHALL BE THE CENTERLINE OF THE PRECINCT LINE ROAD.
 10) THE BOUNDARY BETWEEN RESERVE "A" AND RESERVE "B" SHALL BE THE CENTERLINE OF THE PRECINCT LINE ROAD.
 11) THE BOUNDARY BETWEEN RESERVE "A" AND RESERVE "B" SHALL BE THE CENTERLINE OF THE PRECINCT LINE ROAD.
 12) THE BOUNDARY BETWEEN RESERVE "A" AND RESERVE "B" SHALL BE THE CENTERLINE OF THE PRECINCT LINE ROAD.
 13) THE BOUNDARY BETWEEN RESERVE "A" AND RESERVE "B" SHALL BE THE CENTERLINE OF THE PRECINCT LINE ROAD.
 14) THE BOUNDARY BETWEEN RESERVE "A" AND RESERVE "B" SHALL BE THE CENTERLINE OF THE PRECINCT LINE ROAD.
 15) THE BOUNDARY BETWEEN RESERVE "A" AND RESERVE "B" SHALL BE THE CENTERLINE OF THE PRECINCT LINE ROAD.

By: _____
 Signature
 Title: _____
 Title: _____
 STATE OF TEXAS
 COUNTY OF FORT BEND
 I, _____, County Clerk, do hereby certify that this plat meets the requirements of the Texas Surveying Act, Chapter 161, Texas Government Code, and the rules and regulations of the Board of Professional Engineers, Registered Professional Surveyors, and Professional Land Surveyors, State of Texas, and that the same are correct and true to the best of my knowledge and belief.



I, _____, Professional Engineer, registered in the State of Texas, do hereby certify that this plat meets the requirements of the Texas Surveying Act, Chapter 161, Texas Government Code, and the rules and regulations of the Board of Professional Engineers, Registered Professional Surveyors, and Professional Land Surveyors, State of Texas, and that the same are correct and true to the best of my knowledge and belief.

APPROVED BY THE COMMISSIONER OF FORT BEND COUNTY, TEXAS, THIS _____ DAY OF _____ 2015.

APPROVED BY THE COMMISSIONER OF FORT BEND COUNTY, TEXAS, THIS _____ DAY OF _____ 2015.

APPROVED BY THE COMMISSIONER OF FORT BEND COUNTY, TEXAS, THIS _____ DAY OF _____ 2015.