



Fort Bend County Engineering
FORT BEND COUNTY, TEXAS

Richard W. Stolleis, P.E.
County Engineer

March 2, 2015

Commissioner W. A. "Andy" Meyers
Fort Bend County Precinct 3
22333 Grand Corner Drive
Katy, Texas 77494

**RE: Bella Terra Parkway STD - Traffic Control Plan
Bella Terra Center Way STD
Katy Gaston Road STD**

Dear Commissioner Meyers:

Fort Bend County Engineering has completed and recommends approval of the traffic control plan for the above referenced subdivision. The public hearing date for acceptance of the plan is being scheduled.

A copy of the traffic control plan is attached for your review. If you should have any questions, please give me a call.

Sincerely,



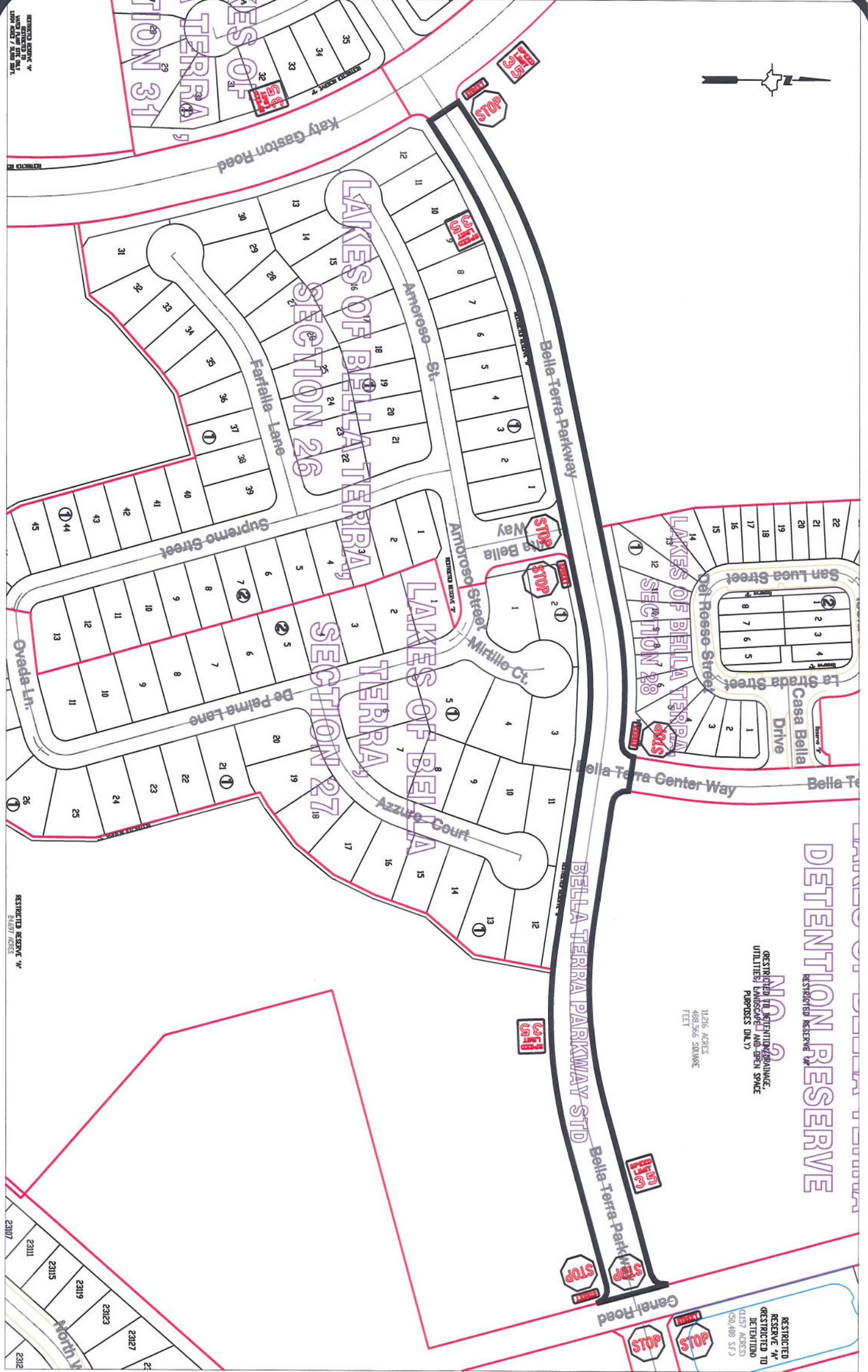
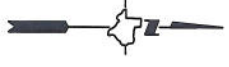
Jorge Salgado
Construction Inspector
Engineer Technician I

JS/clg

cc: Judge Robert E. Hebert, County Judge
Marc Grant - FBC Road & Bridge
Brian Fields - Signage Department
File

301 Jackson St., Suite 401 | Richmond, TX 77469
Phone 281-633-7500 * Fax 281-633-7545

I:\Sandy Garza\New folder\TCP Letter_Bella Terra Parkway STD.docx



RESTRICTED RESERVE

RESTRICTED TO DETENTION/PARKING, UTILITIES, LANDSCAPE AND OPEN SPACE PURPOSES ONLY

11,216 SQUARE FEET
488,566 SQUARE FEET

RESTRICTED RESERVE
RESTRICTED TO DETENTION
1157 ADDRESS
450,488 SF²

Note:

The purpose of this traffic control plan is to establish traffic control for Bella Terra Parkway Street Dedication.

Drawn By: L. Brdecka
 Date: 2-27-15
 Approved By: Clay A. Forster, PE *CAF*
 Date: *02MAR15*
 Scale
 1" = 200'-0"

**Bella Terra Parkway
 Street Dedication
 Control Map and
 Traffic Sign Layout**

Fort Bend County Engineering Dept.
 1124 Blume Road
 Rosenberg, Texas 77471



UNRESTRICTED RESERVE "A"

14,999 Acres

BELLA TERRA APARTMENTS

RESTRICTED RESERVE "E"
(RESTRICTED TO DETENTION)
(3,976 ACRES)
(173,192 S.F.)

BELLA TERRA CENTER WAY STD

SHOPS

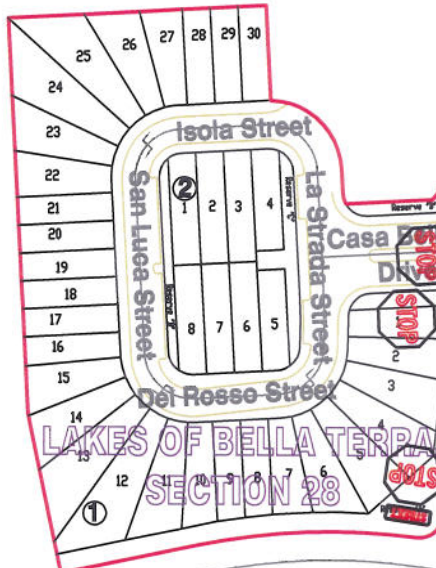
RESTRICTED RESERVE "C"
(RESTRICTED TO DETENTION)
(1,238 ACRES)
(53,946 S.F.)

LAKES OF BELLA TERRA DETENTION RESERVE

RESTRICTED RESERVE "W"

NO. 2
(RESTRICTED TO DETENTION, DRAINAGE, UTILITIES, LANDSCAPE AND OPEN SPACE PURPOSES ONLY)

11,216 ACRES
488,566 SQUARE FEET



LAKES OF BELLA TERRA SECTION 28

Bella Terra Center Way

BELLA TERRA PARKWAY STD



LAKES OF BELLA TERRA SECTION 27



LAKES OF BELLA TERRA SECTION 26

Note:

The purpose of this traffic control plan is to establish traffic control for Bella Terra Center Way Street Dedication.

Drawn By: L. Brdecka

Date: 2-27-15

Approved By: Clay A. Forster, PE *CAF*

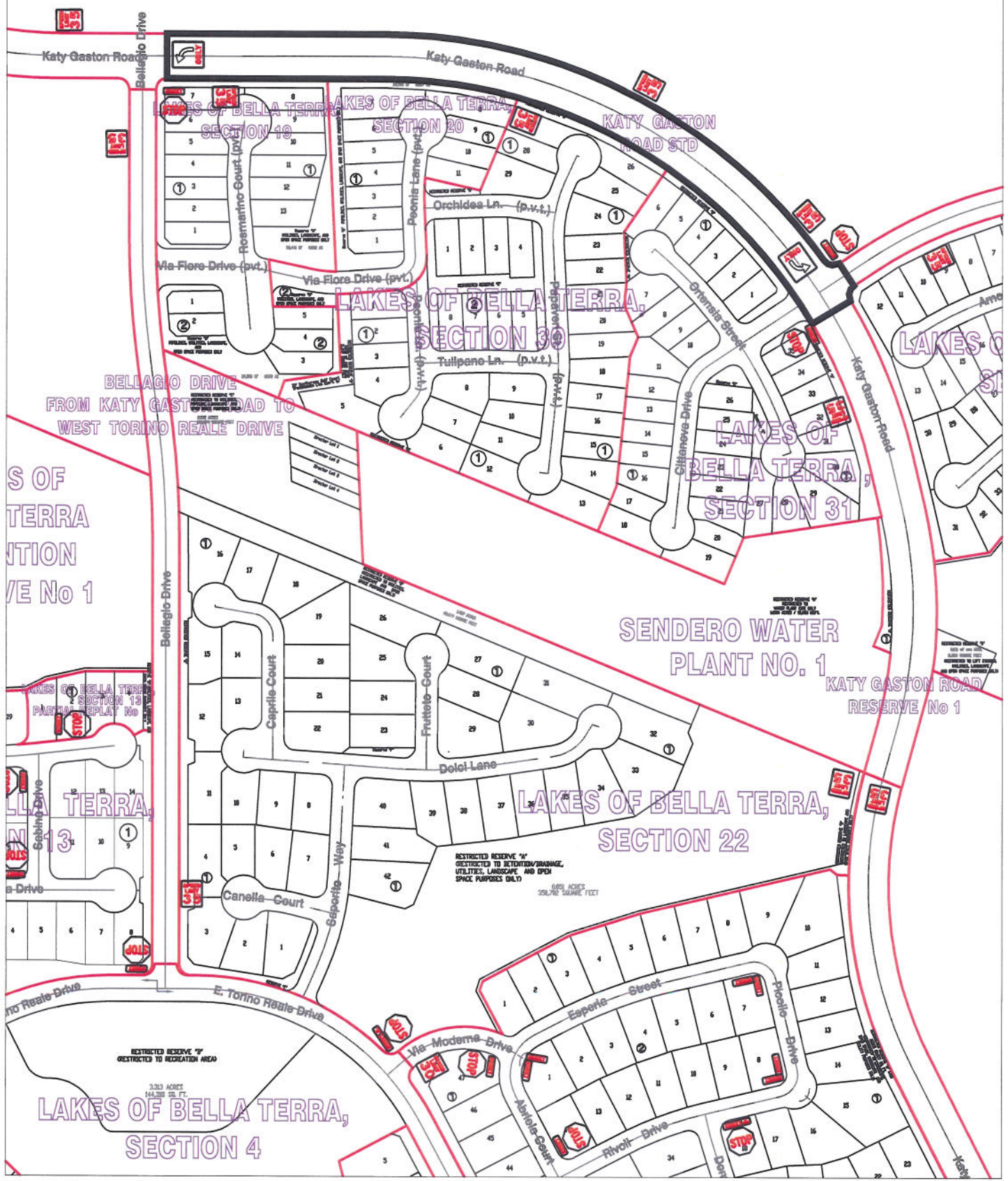
Date: 02MAR15

Scale

1" = 200'-0"

Bella Terra Center Way
Street Dedication
Control Map and
Traffic Sign Layout

Fort Bend County Engineering Dept.
1124 Blume Road
Rosenberg, Texas 77471



Note:
 The purpose of this traffic control plan is to establish traffic control for Katy Gaston Road Street Dedication.

Drawn By: L. Brdecka
 Date: 3-2-15
 Approved By: Clay A. Forister, PE *CAF*
 Date: 02 MAR 15
 Scale
 1" = 300'-0"

Katy Gaston Road
 Street Dedication
 Control Map and
 Traffic Sign Layout
 Fort Bend County Engineering Dept.
 301 Jackson Street
 Richmond, Texas 77469