



Fort Bend County Engineering
FORT BEND COUNTY, TEXAS

Richard W. Stolleis, P.E.
County Engineer

February 2, 2015

Commissioner W. A. "Andy" Meyers
Fort Bend County Precinct 3
22333 Grand Corner Drive
Katy, Texas 77494

**RE: Firethorne, Section 21 - Traffic Control Plan
Firethorne, Section 22
Firethorne, Section 23
Firethorne, Section 24**

Dear Commissioner:

Fort Bend County Engineering has completed and recommends approval of the traffic control plans for the above referenced subdivisions. The public hearing date for acceptance of the plans is being scheduled.

A copy of the traffic control plans are attached for your review. If you should have any questions, please give me a call.

Sincerely,

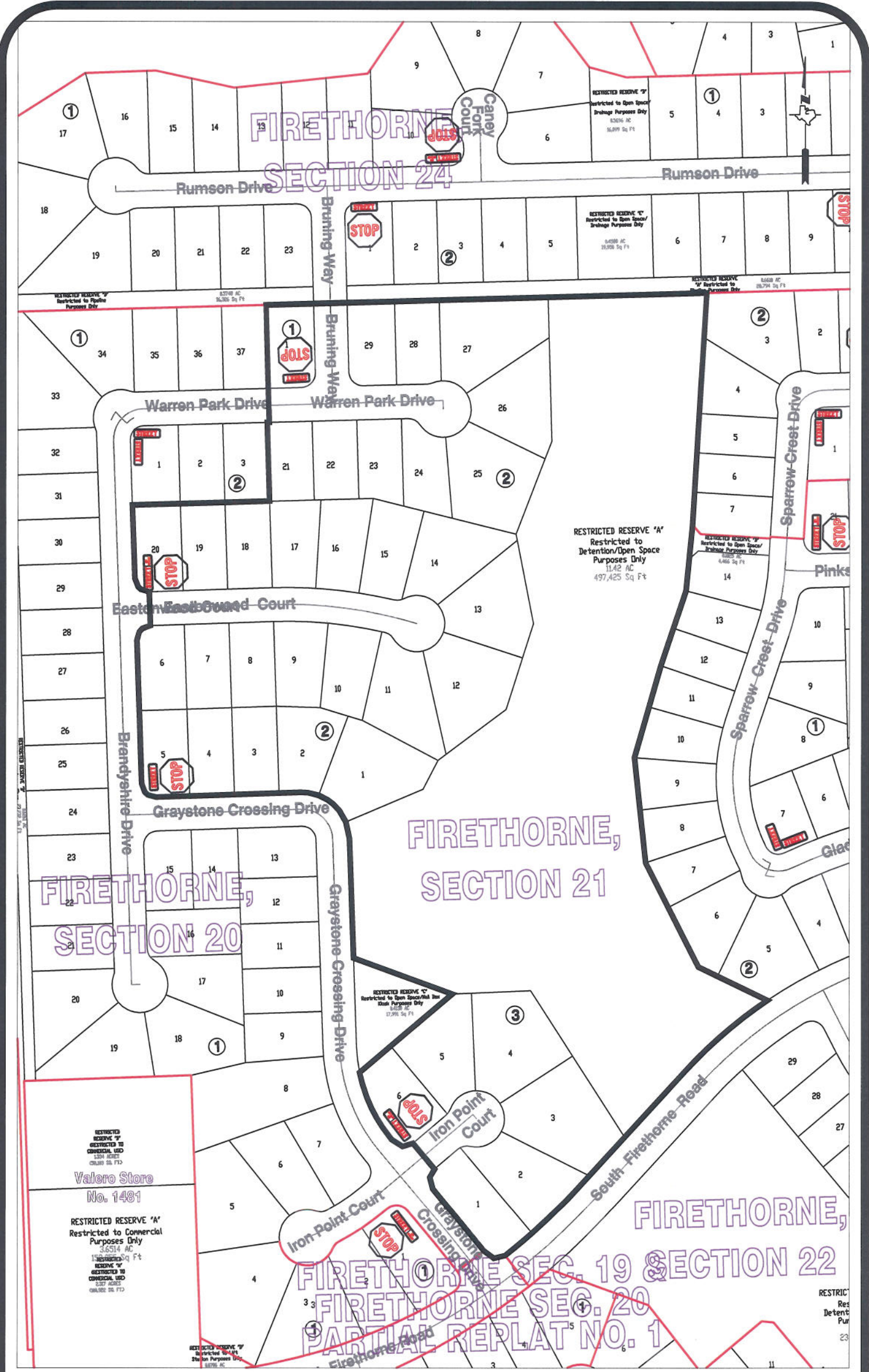
Clay A. Forster, P.E.
Assistant County Engineer - Development

CAF/mjs

cc: Judge Robert E. Hebert, County Judge
Marc Grant - FBC Road & Bridge
Brian Fields - Signage Department
File

301 Jackson St., Suite 401, Richmond, TX 77469
Phone 281-633-7500 | Fax 281-633-7545

I:\WPDATA\LETTERS\TRAFSTUD\100920215_t01.docx



Note:

The purpose of this traffic control plan is to establish traffic control for Firethorne, Section 21.

Drawn By: L. Brdecka

Date: 2-2-15

Approved By: Clay Forister, PE *CAF*

Date: 02 FEB 15

Scale

1" = 200'-0"

Firethorne, Section 21

Control Map

and

Traffic Sign Layout

Fort Bend County Engineering Dept.

1124 Blume Road

Rosenberg, Texas 77471

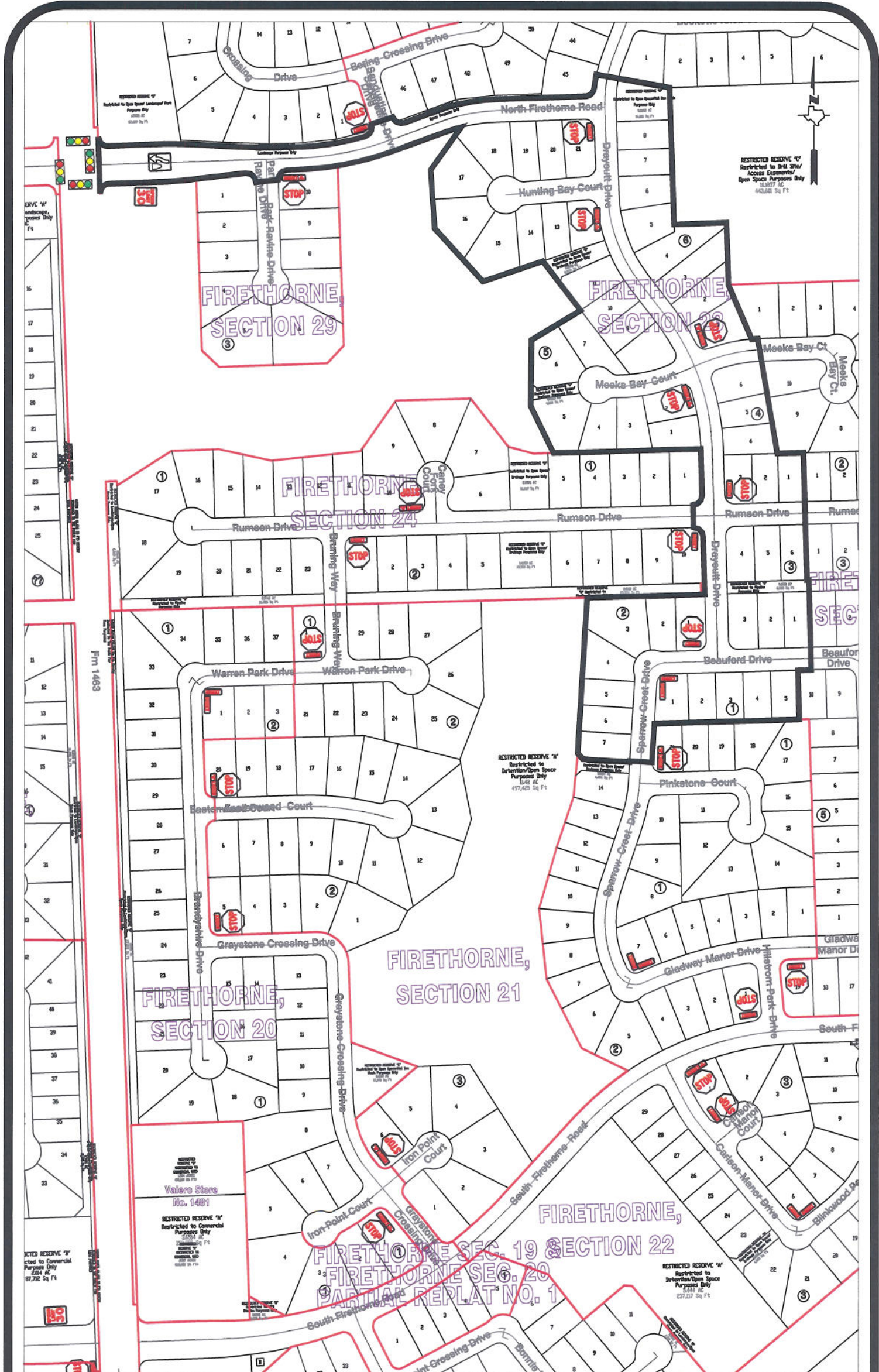


Note:

The purpose of this traffic control plan is to establish traffic control for Firethorne, Section 22.

Drawn By: L. Brdecka
Date: 2-2-15
Approved By: Clay Forister, PE *CF*
Date: *02FEB15*
Scale: 1" = 300'-0"

Firethorne, Section 22
Control Map
and
Traffic Sign Layout
Fort Bend County Engineering Dept.
1124 Blume Road
Rosenberg, Texas 77471



Note:

The purpose of this traffic control plan is to establish traffic control for Firethorne, Section 23.

Drawn By: L. Brdecka

Date: 2-2-15

Approved By: Clay Forister, PE *CAF*

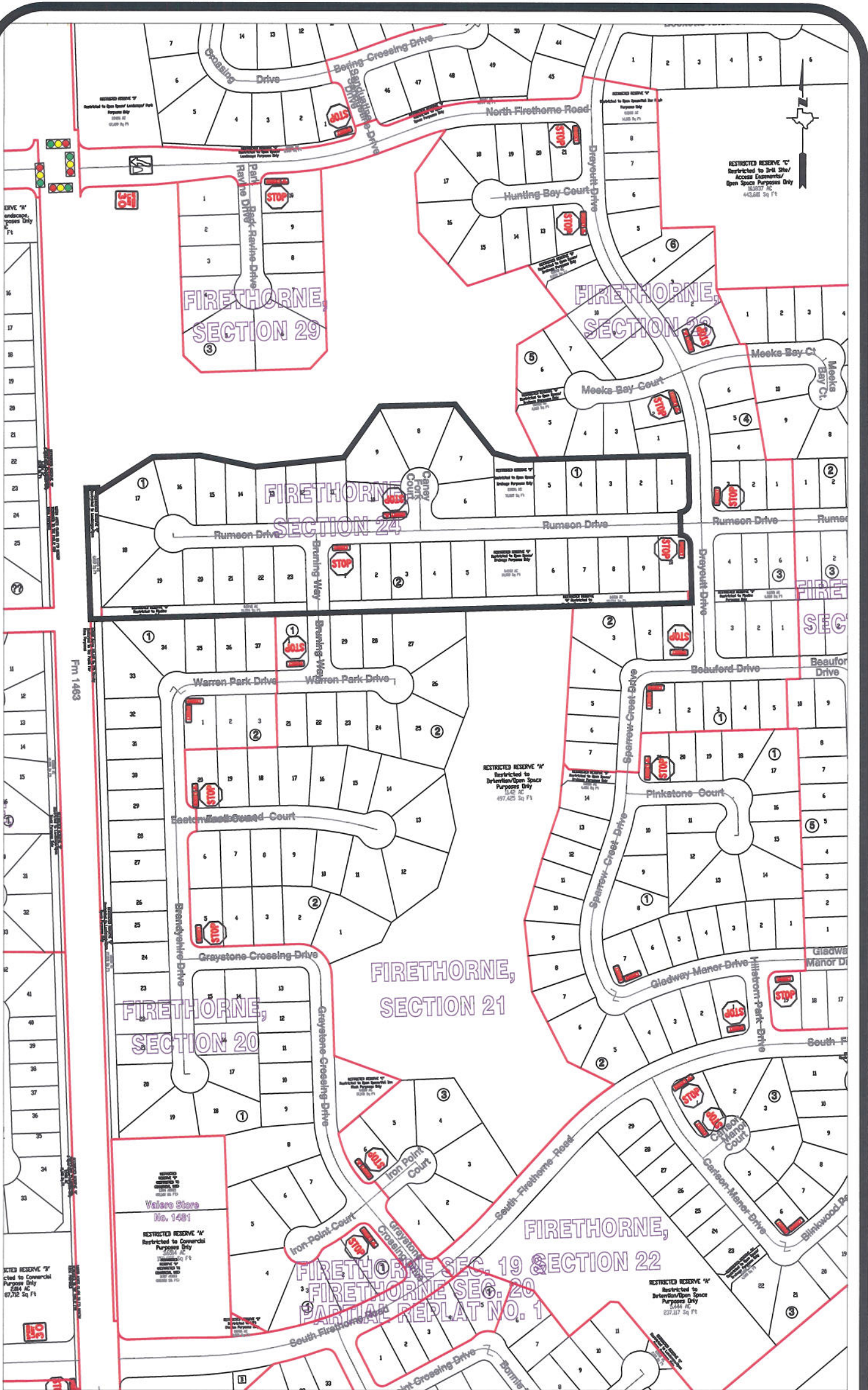
Date: *02 FEB 15*

Scale

1" = 300'-0"

**Firethorne, Section 23
Control Map and
Traffic Sign Layout**

Fort Bend County Engineering Dept.
1124 Blume Road
Rosenberg, Texas 77471



Note:

The purpose of this traffic control plan is to establish traffic control for Firethorne, Section 24.

Drawn By: L. Brdecka

Date: 2-2-15

Approved By: Clay Forister, PE *CAF*

Date: *02 FEB 15*

Scale

1" = 300'-0"

Firethorne, Section 24

**Control Map and
Traffic Sign Layout**

Fort Bend County Engineering Dept.
1124 Blume Road
Rosenberg, Texas 77471