



Fort Bend County Engineering
FORT BEND COUNTY, TEXAS

Richard W. Stolleis, P.E.
County Engineer

February 5, 2015

Commissioner W. A. "Andy" Meyers
Fort Bend County Precinct 3
22333 Grand Corner Drive
Katy, Texas 77494

**RE: Katy ISD Elementary No. 32- Odessa Kilpatrick Elementary School
Extension of Existing School Zone on Cinco Ranch Boulevard**

Dear Commissioner:

The Fort Bend County Engineering Department has received a request from the school administrator at the above referenced school to lengthen the existing school zone south on Cinco Ranch Boulevard towards Enchanted Meadow Lane.

Fort Bend County Engineering Department recommends extending the school zone 130 feet towards Enchanted Meadow Lane, per the submitted traffic control plans.

The public hearing date for acceptance of the plan will be scheduled. A copy of the traffic control plan is attached for your review.

If you should have any questions, please do not hesitate to contact me at 281-633-7528 or via email at Gerald.Wilson@fortbendcountytx.gov.

Sincerely,

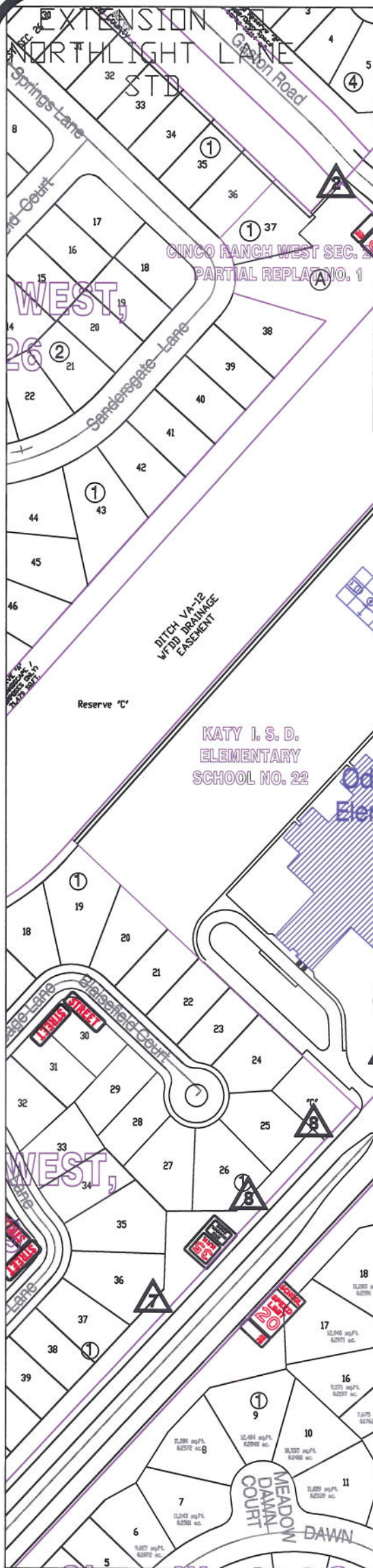
Gerald P. Wilson, P.E.
Assistant County Engineer – Traffic

GPW/clg

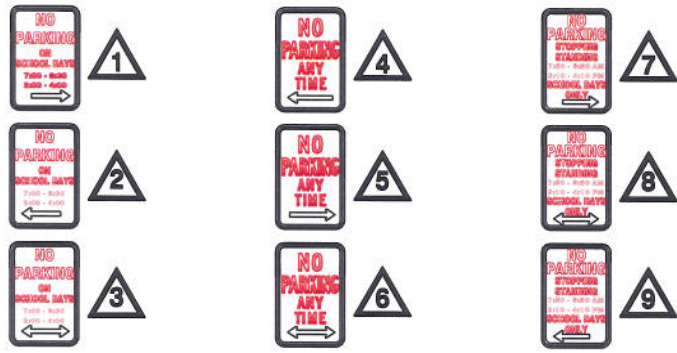
cc: Judge Robert E. Hebert, County Judge
Marc Grant - FBC Road & Bridge
Brian Fields - Signage Department
File

Ms. Malynn Rodriguez, Principal
Odessa Kilpatrick Elementary School
MalynnRRodriguez@KatyISD.org

301 Jackson St., Suite 401 | Richmond, TX 77469
Phone 281-633-7500 * Fax 281-633-7545



"NO PARKING" SIGN LEGEND



Note:

The purpose of this traffic control plan is to revise traffic control for Odessa Kilpatrick Elementary School (Katy I.S.D.) as indicated on the drawing.

Drawn By: L. Brdecka

Date: 2-6-15

Approved By: Gerald Wilson, PE

Date:

Scale

1" = 200'-0"

Odessa Kilpatrick Elementary School (Katy I.S.D.) Control Map and Traffic Sign Layout

Fort Bend County Engineering Dept.
1124 Blume Road
Rosenberg, Texas 77471