

PLAT RECORDING SHEET

PLAT NAME: Pin Oak Enclave

PLAT NO: _____

ACREAGE: 26.1646

LEAGUE: George W. Cartwright Survey

ABSTRACT NUMBER: 149

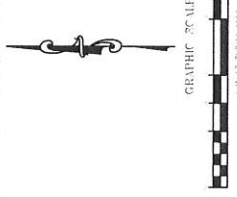
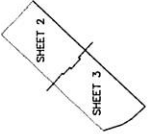
NUMBER OF BLOCKS: 2

NUMBER OF LOTS: 62

NUMBER OF RESERVES: 9

OWNERS: Pulte Homes of Texas, L.P., a Texas Limited Liability Partnership

(DEPUTY CLERK)



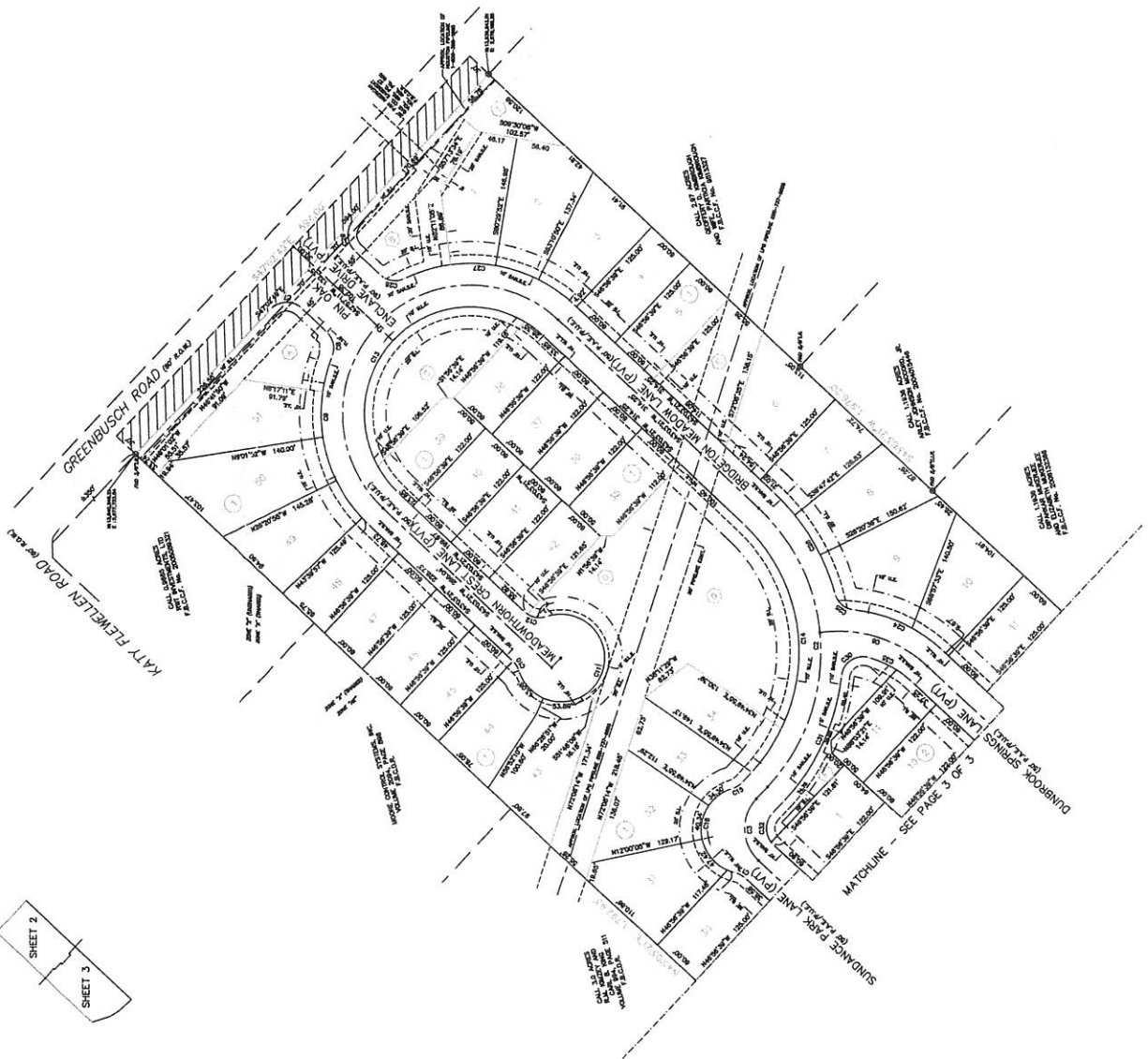
VICINITY MAP
KEY MAP '84, G

LINE TABLE

LINE	APPROX. DRAINAGE DISTANCE	RESTRICTION
(A)	0.019 AC / 14.336 S.F.	LANDSCAPE / OPEN SPACE
(B)	0.048 AC / 14.817 S.F.	LANDSCAPE / OPEN SPACE
(C)	0.074 AC / 14.885 S.F.	LANDSCAPE / OPEN SPACE
(D)	0.127 AC / 14.917 S.F.	LANDSCAPE / OPEN SPACE / HED.
(E)	0.212 AC / 14.933 S.F.	LANDSCAPE / OPEN SPACE
(F)	0.329 AC / 14.948 S.F.	LANDSCAPE / OPEN SPACE
(G)	0.489 AC / 14.953 S.F.	LANDSCAPE / OPEN SPACE
(H)	0.700 AC / 14.958 S.F.	DETENTION / DRAINAGE
(I)	0.101 AC / 14.971 S.F.	EMERGENCY LIFT STATION

CURVE TABLE

DISTRICT NAMES
BLVD.
WEST BEND BLVD. 102
SCHOOL
INDUSTRIAL
COMMERCIAL
RESIDENTIAL
UNIVERSITY
TELEPHONE
CONSOLIDATED COMMUNICATIONS
CHILE
CONCRETE



PIN OAK ENCLAVE
 A SUBDIVISION OF 26.1646 ACRES OF LAND
 LOCATED IN THE
 GEORGE W. CARTWRIGHT SURVEY, A-143
 FORT BEND COUNTY, TEXAS

PLATE NUMBER OF TEXAS L.P.
 A TEXAS LIMITED PARTNERSHIP
 08/21/1988

GBI PARTNERS, L.P.
 LAND SURVEYING CONSULTANTS
 1100 WEST 19TH STREET
 FORT WORTH, TEXAS 76102
 (817) 733-1100

GBI Engineering, L.P.
 1100 WEST 19TH STREET
 FORT WORTH, TEXAS 76102
 (817) 733-1100

SEE PAGE 3 OF 5

