

PLAT RECORDING SHEET

PLAT NAME: Mission Trace, Sec. 3

PLAT NO: _____

ACREAGE: 43.54

LEAGUE: A. M. Clopper Survey & A. M. Clopper Survey, H. Rogers Survey

ABSTRACT NUMBER: 151, 152, 309

NUMBER OF BLOCKS: 2

NUMBER OF LOTS: 108

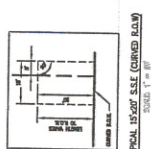
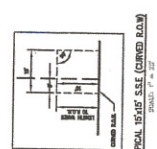
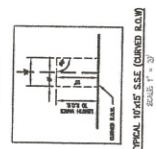
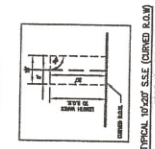
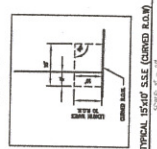
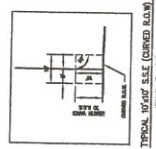
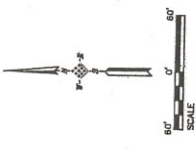
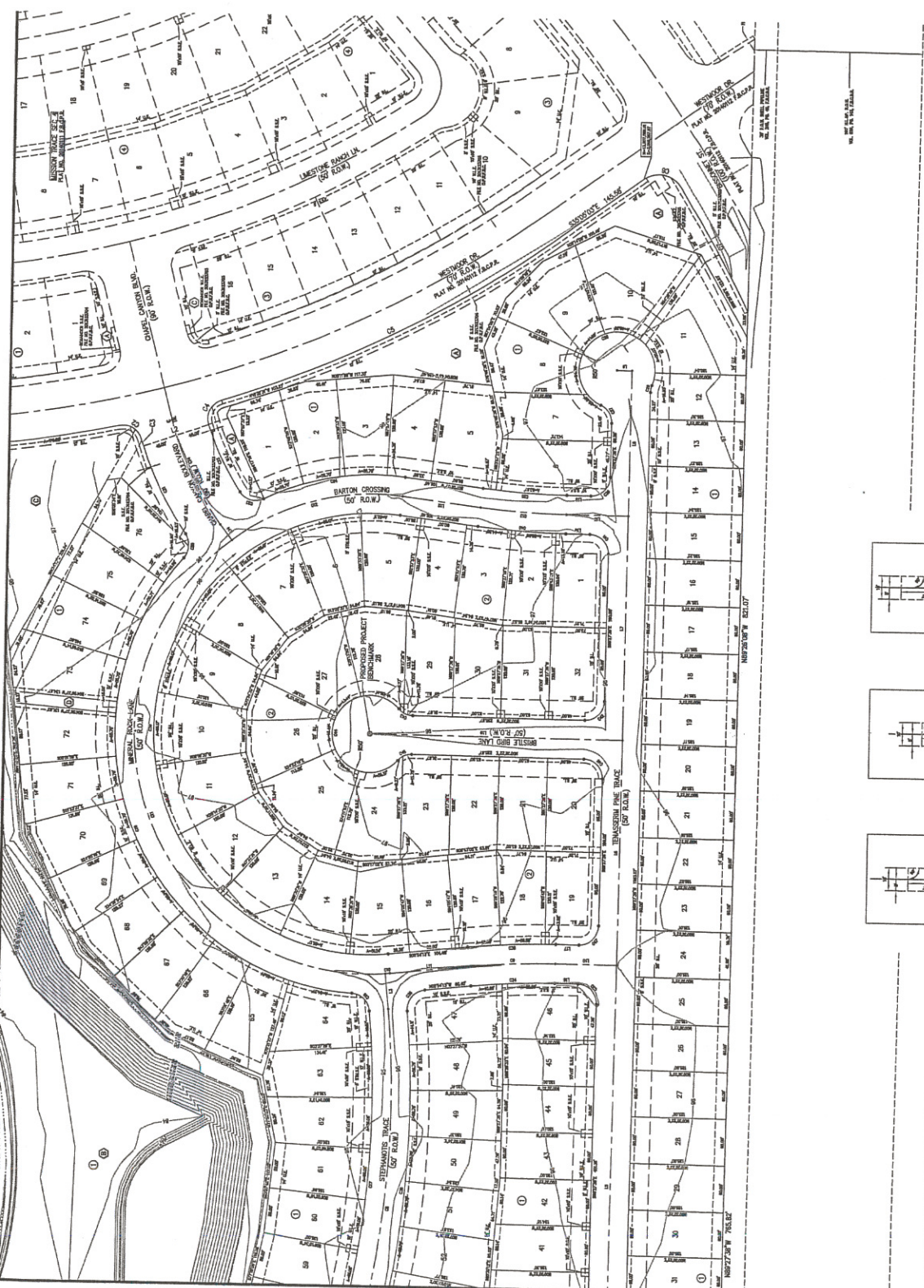
NUMBER OF RESERVES: 4

OWNERS: D. R. Horton – Texas, Ltd.

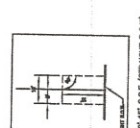
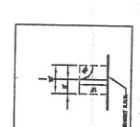
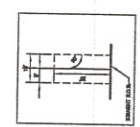
(DEPUTY CLERK)

MATCH LINE 'B'

MATCH LINE 'A'

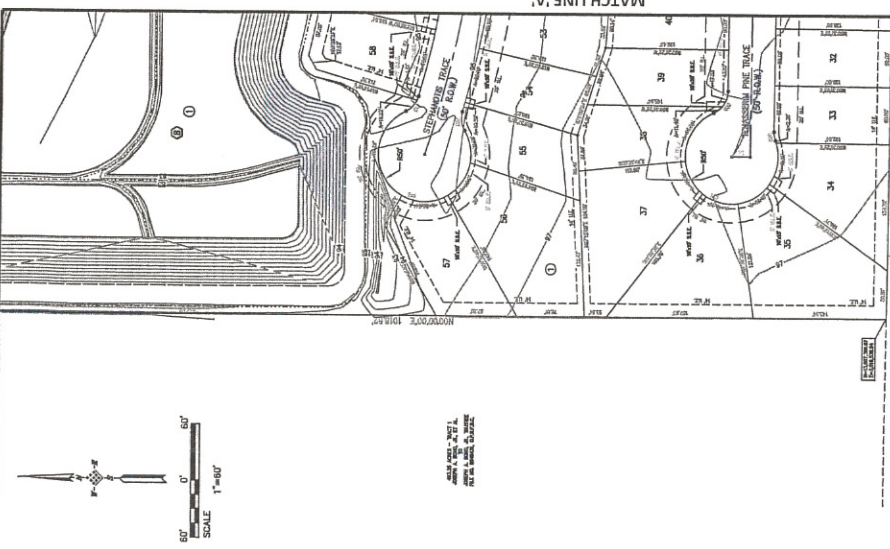


- NOTE:
1. THE TRACT SHOWN HEREON IS SUBJECT TO THE EASEMENTS AS SHOWN ON THE PLATS OF RECORD AND THE PUBLIC RECORDS OF REAL PROPERTY OF FORT BEND COUNTY, TEXAS.
 2. ALL UTILITIES AND DISTURBANCE FACILITIES ARE TO BE MAINTAINED BY FORT BEND COUNTY (ADMINISTRATIVE DISTRICT NO. 3).

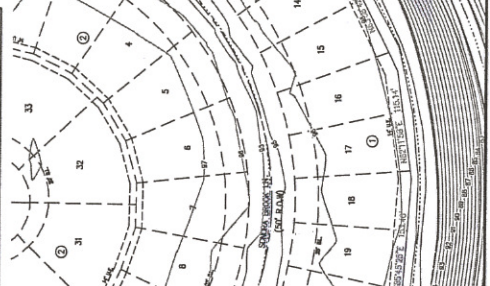


MISSION TRACE SEC 3
SHEET 2 OF 2

OWNER:
D.R. HORTON - TEXAS, LTD.
A 50% LIMITED PARTNERSHIP
A 50% JOINT VENTURE (MEMBER), DAVID M. SUGARLAND, TEXAS FIRM



CHUNK	AREA	LENGTH	WIDTH	CHORD BEARING	CHORD DISTANCE
C1	3000.00'	100.00'	100.00'	270.00°	141.42'
C2	3000.00'	100.00'	100.00'	270.00°	141.42'
C3	3000.00'	100.00'	100.00'	270.00°	141.42'
C4	3000.00'	100.00'	100.00'	270.00°	141.42'
C5	3000.00'	100.00'	100.00'	270.00°	141.42'
C6	3000.00'	100.00'	100.00'	270.00°	141.42'
C7	3000.00'	100.00'	100.00'	270.00°	141.42'
C8	3000.00'	100.00'	100.00'	270.00°	141.42'
C9	3000.00'	100.00'	100.00'	270.00°	141.42'
C10	3000.00'	100.00'	100.00'	270.00°	141.42'
C11	3000.00'	100.00'	100.00'	270.00°	141.42'
C12	3000.00'	100.00'	100.00'	270.00°	141.42'
C13	3000.00'	100.00'	100.00'	270.00°	141.42'
C14	3000.00'	100.00'	100.00'	270.00°	141.42'
C15	3000.00'	100.00'	100.00'	270.00°	141.42'
C16	3000.00'	100.00'	100.00'	270.00°	141.42'
C17	3000.00'	100.00'	100.00'	270.00°	141.42'
C18	3000.00'	100.00'	100.00'	270.00°	141.42'
C19	3000.00'	100.00'	100.00'	270.00°	141.42'
C20	3000.00'	100.00'	100.00'	270.00°	141.42'



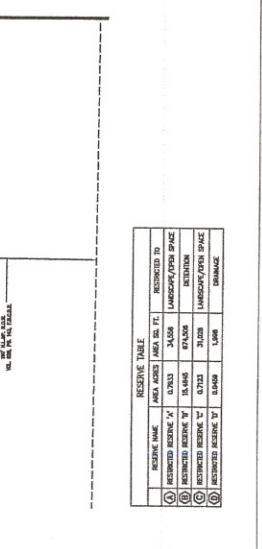
MATCH LINE 'D'

CHUNK	AREA	LENGTH	WIDTH	CHORD BEARING	CHORD DISTANCE
C21	3000.00'	100.00'	100.00'	270.00°	141.42'
C22	3000.00'	100.00'	100.00'	270.00°	141.42'
C23	3000.00'	100.00'	100.00'	270.00°	141.42'
C24	3000.00'	100.00'	100.00'	270.00°	141.42'
C25	3000.00'	100.00'	100.00'	270.00°	141.42'
C26	3000.00'	100.00'	100.00'	270.00°	141.42'
C27	3000.00'	100.00'	100.00'	270.00°	141.42'
C28	3000.00'	100.00'	100.00'	270.00°	141.42'
C29	3000.00'	100.00'	100.00'	270.00°	141.42'
C30	3000.00'	100.00'	100.00'	270.00°	141.42'
C31	3000.00'	100.00'	100.00'	270.00°	141.42'
C32	3000.00'	100.00'	100.00'	270.00°	141.42'
C33	3000.00'	100.00'	100.00'	270.00°	141.42'
C34	3000.00'	100.00'	100.00'	270.00°	141.42'
C35	3000.00'	100.00'	100.00'	270.00°	141.42'
C36	3000.00'	100.00'	100.00'	270.00°	141.42'
C37	3000.00'	100.00'	100.00'	270.00°	141.42'
C38	3000.00'	100.00'	100.00'	270.00°	141.42'
C39	3000.00'	100.00'	100.00'	270.00°	141.42'
C40	3000.00'	100.00'	100.00'	270.00°	141.42'

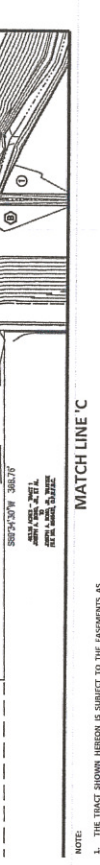
MATCH LINE 'B'

CHUNK	AREA	LENGTH	WIDTH	CHORD BEARING	CHORD DISTANCE
C41	3000.00'	100.00'	100.00'	270.00°	141.42'
C42	3000.00'	100.00'	100.00'	270.00°	141.42'
C43	3000.00'	100.00'	100.00'	270.00°	141.42'
C44	3000.00'	100.00'	100.00'	270.00°	141.42'
C45	3000.00'	100.00'	100.00'	270.00°	141.42'
C46	3000.00'	100.00'	100.00'	270.00°	141.42'
C47	3000.00'	100.00'	100.00'	270.00°	141.42'
C48	3000.00'	100.00'	100.00'	270.00°	141.42'
C49	3000.00'	100.00'	100.00'	270.00°	141.42'
C50	3000.00'	100.00'	100.00'	270.00°	141.42'
C51	3000.00'	100.00'	100.00'	270.00°	141.42'
C52	3000.00'	100.00'	100.00'	270.00°	141.42'
C53	3000.00'	100.00'	100.00'	270.00°	141.42'
C54	3000.00'	100.00'	100.00'	270.00°	141.42'
C55	3000.00'	100.00'	100.00'	270.00°	141.42'
C56	3000.00'	100.00'	100.00'	270.00°	141.42'
C57	3000.00'	100.00'	100.00'	270.00°	141.42'
C58	3000.00'	100.00'	100.00'	270.00°	141.42'
C59	3000.00'	100.00'	100.00'	270.00°	141.42'
C60	3000.00'	100.00'	100.00'	270.00°	141.42'

MATCH LINE 'A'



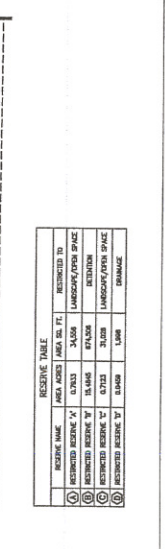
RESERVE NAME	AREA (ACRES)	AREA (SQ. FT.)	RESTRICTED TO
(A) RESTRICTED RESERVE 'A'	0.7613	33,000	LANDSCAPE/OPEN SPACE
(B) RESTRICTED RESERVE 'B'	0.7613	33,000	ENTRANCE
(C) RESTRICTED RESERVE 'C'	0.7613	33,000	LANDSCAPE/OPEN SPACE
(D) RESTRICTED RESERVE 'D'	0.7613	33,000	DRAINAGE



MATCH LINE 'E'

CHUNK	AREA	LENGTH	WIDTH	CHORD BEARING	CHORD DISTANCE
C61	3000.00'	100.00'	100.00'	270.00°	141.42'
C62	3000.00'	100.00'	100.00'	270.00°	141.42'
C63	3000.00'	100.00'	100.00'	270.00°	141.42'
C64	3000.00'	100.00'	100.00'	270.00°	141.42'
C65	3000.00'	100.00'	100.00'	270.00°	141.42'
C66	3000.00'	100.00'	100.00'	270.00°	141.42'
C67	3000.00'	100.00'	100.00'	270.00°	141.42'
C68	3000.00'	100.00'	100.00'	270.00°	141.42'
C69	3000.00'	100.00'	100.00'	270.00°	141.42'
C70	3000.00'	100.00'	100.00'	270.00°	141.42'
C71	3000.00'	100.00'	100.00'	270.00°	141.42'
C72	3000.00'	100.00'	100.00'	270.00°	141.42'
C73	3000.00'	100.00'	100.00'	270.00°	141.42'
C74	3000.00'	100.00'	100.00'	270.00°	141.42'
C75	3000.00'	100.00'	100.00'	270.00°	141.42'
C76	3000.00'	100.00'	100.00'	270.00°	141.42'
C77	3000.00'	100.00'	100.00'	270.00°	141.42'
C78	3000.00'	100.00'	100.00'	270.00°	141.42'
C79	3000.00'	100.00'	100.00'	270.00°	141.42'
C80	3000.00'	100.00'	100.00'	270.00°	141.42'

MATCH LINE 'F'



RESERVE NAME	AREA (ACRES)	AREA (SQ. FT.)	RESTRICTED TO
(A) RESTRICTED RESERVE 'A'	0.7613	33,000	LANDSCAPE/OPEN SPACE
(B) RESTRICTED RESERVE 'B'	0.7613	33,000	ENTRANCE
(C) RESTRICTED RESERVE 'C'	0.7613	33,000	LANDSCAPE/OPEN SPACE
(D) RESTRICTED RESERVE 'D'	0.7613	33,000	DRAINAGE

NOTE:
 1. THE TRACT SHOWN HEREON IS SUBJECT TO THE EASEMENTS AS RECORDED UNDER DOCUMENT NO. 28484883 IN THE OFFICIAL PUBLIC RECORDS OF FORT BEND COUNTY, TEXAS.
 2. ALL DRAINAGE AND DETENTION FACILITIES ARE TO BE MAINTAINED BY FORT BEND COUNTY MUNICIPAL UTILITY DISTRICT NO. 20.