



Fort Bend County Engineering
FORT BEND COUNTY, TEXAS

Richard W. Stolleis, P.E.
County Engineer

December 29, 2014

Commissioner Richard Morrison
Fort Bend County Precinct 1
1517 Eugene Heimann Circle, Suite 300
Richmond, Texas 77469

RE: River Run at the Brazos, Section 3A - Traffic Control Plan
River Run at the Brazos, Section 4B
River Run at the Brazos, Section 5

Dear Commissioner:

Fort Bend County Engineering has completed and recommends approval of the traffic control plans for the above referenced subdivision. The public hearing date for acceptance of the plans is being scheduled.

A copy of the traffic control plans are attached for your review. If you should have any questions, please give me a call.

Sincerely,

A handwritten signature in black ink that reads "Steven L. Evans".

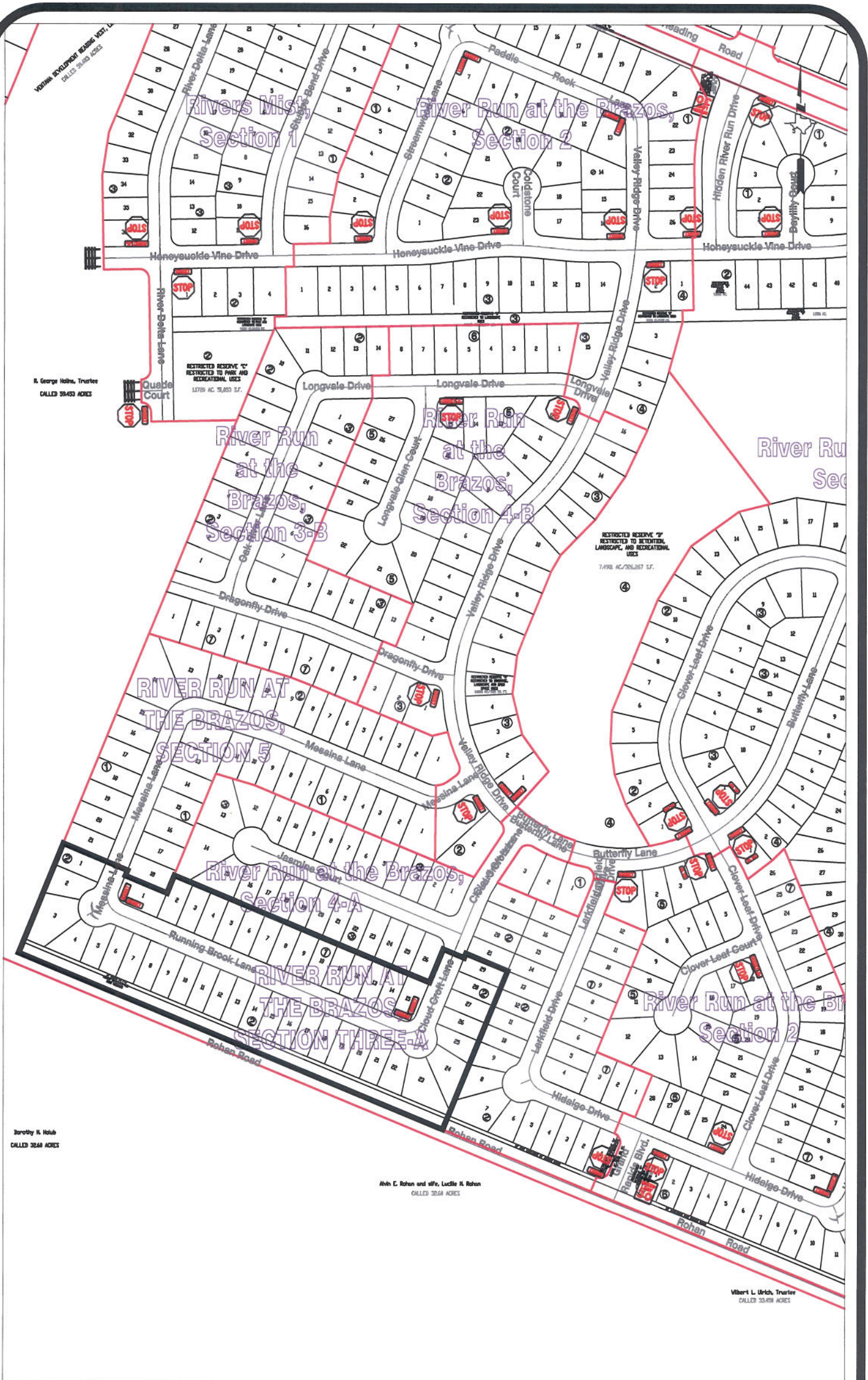
Steven L. Evans
Construction Coordinator

SLE/mjs

cc: Judge Robert E. Hebert, County Judge
Marc Grant - FBC Road & Bridge
Brian Fields - Signage Department
File

301 Jackson St. | Richmond, TX 77469
Phone 281-633-7500 * Fax 281-633-7545

I:\WPDATA\LETTERS\TRAFSTUD\120481214_t01.docx



Note:

The purpose of this traffic control plan is to establish traffic control for River Run at the Brazos, Section 3-A.

Drawn By: L. Brdecka

Date: 12-29-14

Approved By: Clay Forster, PE

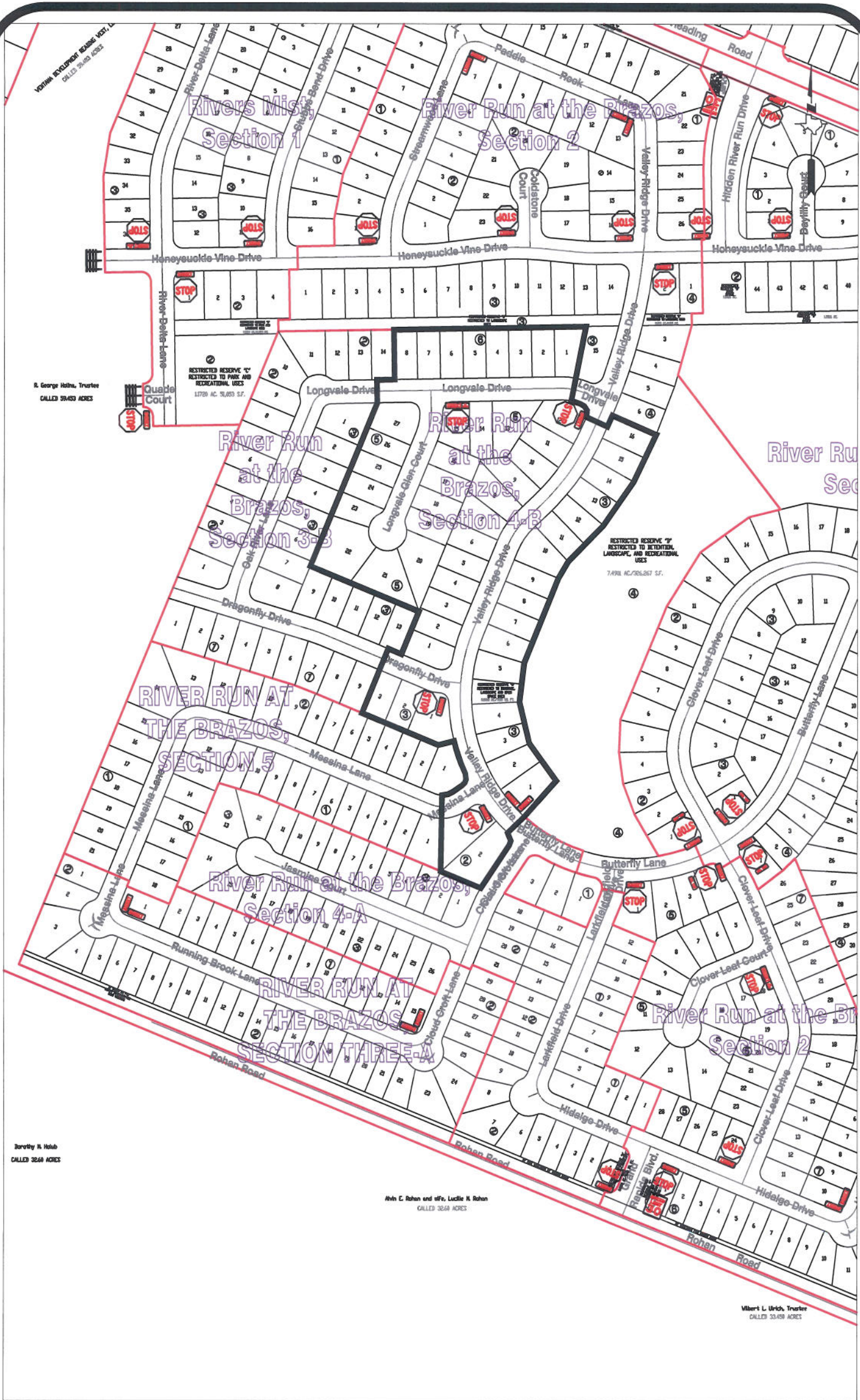
Date: *RJS 12/30/14*

Scale

1" = 300'-0"

**River Run at the Brazos, Section 3-A
Control Map and
Traffic Sign Layout**

Fort Bend County Engineering Dept.
1124 Blume Road
Rosenberg, Texas 77471



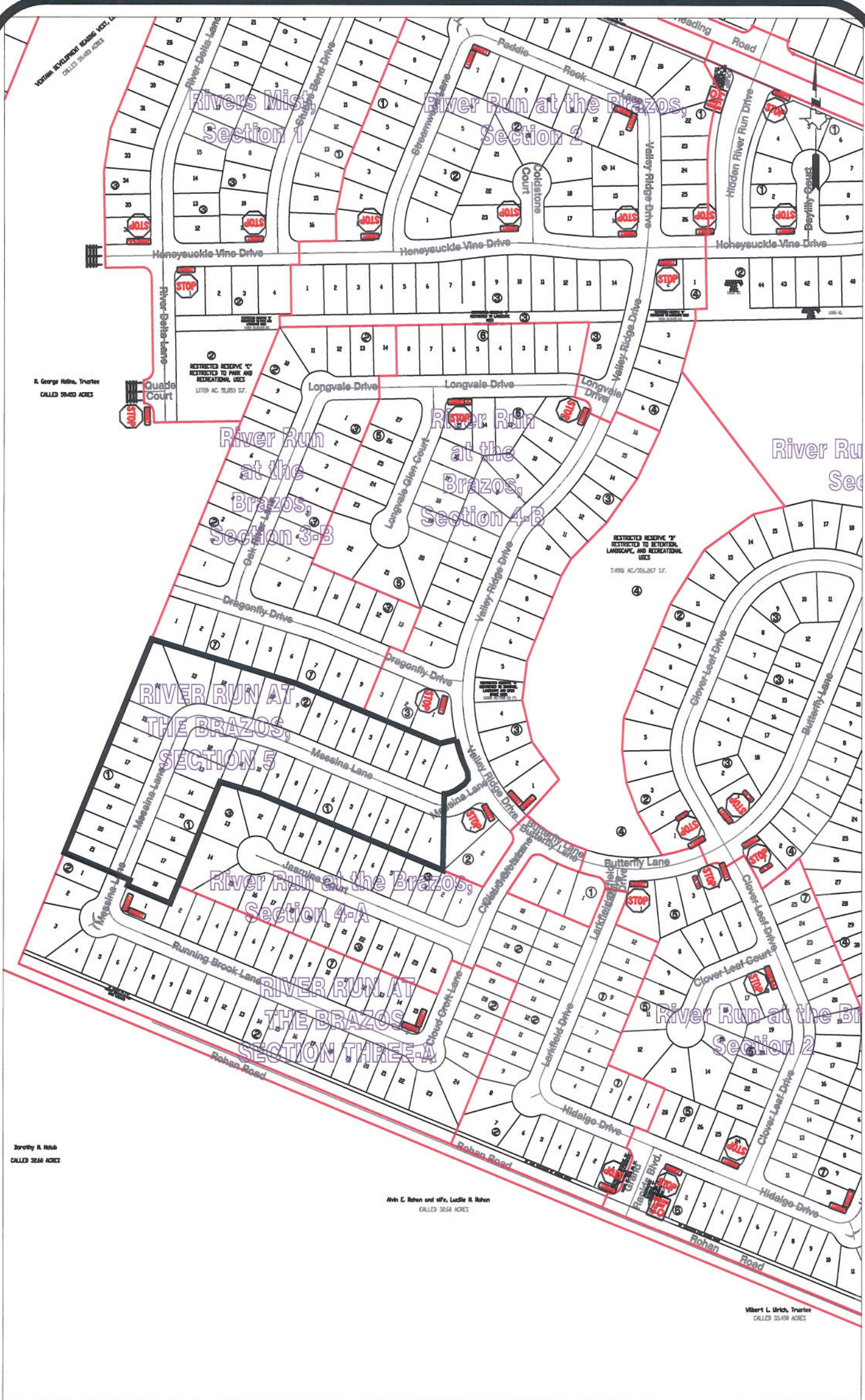
Note:

The purpose of this traffic control plan is to establish traffic control for River Run at the Brazos, Section 4-B.

Drawn By: L. Brdecka
Date: 12-29-14
Approved By: Clay Forster, PE
Date: *RJS* 12/30/14
Scale
1" = 300'-0"

**River Run at the Brazos, Section 4-B
Control Map and
Traffic Sign Layout**

Fort Bend County Engineering Dept.
1124 Blume Road
Rosenberg, Texas 77471



Note:

The purpose of this traffic control plan is to establish traffic control for River Run at the Brazos, Section 5.

Drawn By: L. Brdecka

Date: 12-29-14

Approved By: Clay Forster, PE

Date: *RJS 12/30/14*

Scale

1" = 300'-0"

**River Run at the Brazos, Section 5
Control Map and
Traffic Sign Layout**

Fort Bend County Engineering Dept.
1124 Blume Road
Rosenberg, Texas 77471