



Fort Bend County Engineering  
FORT BEND COUNTY, TEXAS

Richard W. Stolleis, P.E.  
County Engineer

July 29, 2014

Commissioner Grady Prestage  
Fort Bend County Precinct 2  
3030 Texas Parkway, Suite 213  
Missouri City, Texas 77459

**RE: Sienna Village of Bees Creek, Section Five - Traffic Control Plan**  
**Sienna Village of Bees Creek, Section Eight**  
**Sienna Village of Bees Creek, Section Nine**  
**Sienna Village of Bees Creek, Section Ten**  
**Sienna Village of Bees Creek, Section Eleven**  
**Sienna Village of Bees Creek, Section Twelve**  
**Sienna Village of Bees Creek, Section Thirteen**  
**Sienna Village of Bees Creek, Section Eighteen**  
**Sienna Village of Bees Creek, Section Twenty**

Dear Commissioner:

Fort Bend County Engineering has completed and recommends approval of the traffic control plans for the above referenced subdivisions. The public hearing date for acceptance of the plans is being scheduled.

A copy of the traffic control plans are attached for your review. If you should have any questions, please give me a call.

Sincerely,

Steven L. Evans  
Construction Coordinator

SLE/mjs

cc: Judge Robert E. Hebert, County Judge  
Marc Grant - FBC Road & Bridge  
Marc Grant - Signage Department  
File

[Office] 1124 Blume Road | Rosenberg, TX 77471 \* [Mailing] 301 Jackson St. | Richmond, TX 77469  
Phone 281-633-7500 \* Fax 281-633-7545

I:\WPDATA\LETTERS\TRAFSTUD\120231214\_t01.docx





**Note:**

The purpose of this traffic control plan is to establish traffic control for Sienna Village of Bees Creek, Section 8.

Drawn By: L. Brdecka

Date: 11-24-14

Approved By: Clay Forster, PE *CAF*

Date: *01DEC14*

Scale

1" = 200'-0"

Sienna Village of Bees Creek,  
Section 8

Control Map and  
Traffic Sign Layout

Fort Bend County Engineering Dept.  
1124 Blume Road  
Rosenberg, Texas 77471



**Note:**

The purpose of this traffic control plan is to establish traffic control for Sienna Village of Bees Creek, Section 9.

Drawn By: L. Brdecka

Date: 11-24-14

Approved By: Clay Forster, PE *CAF*

Date: *01DEC14*

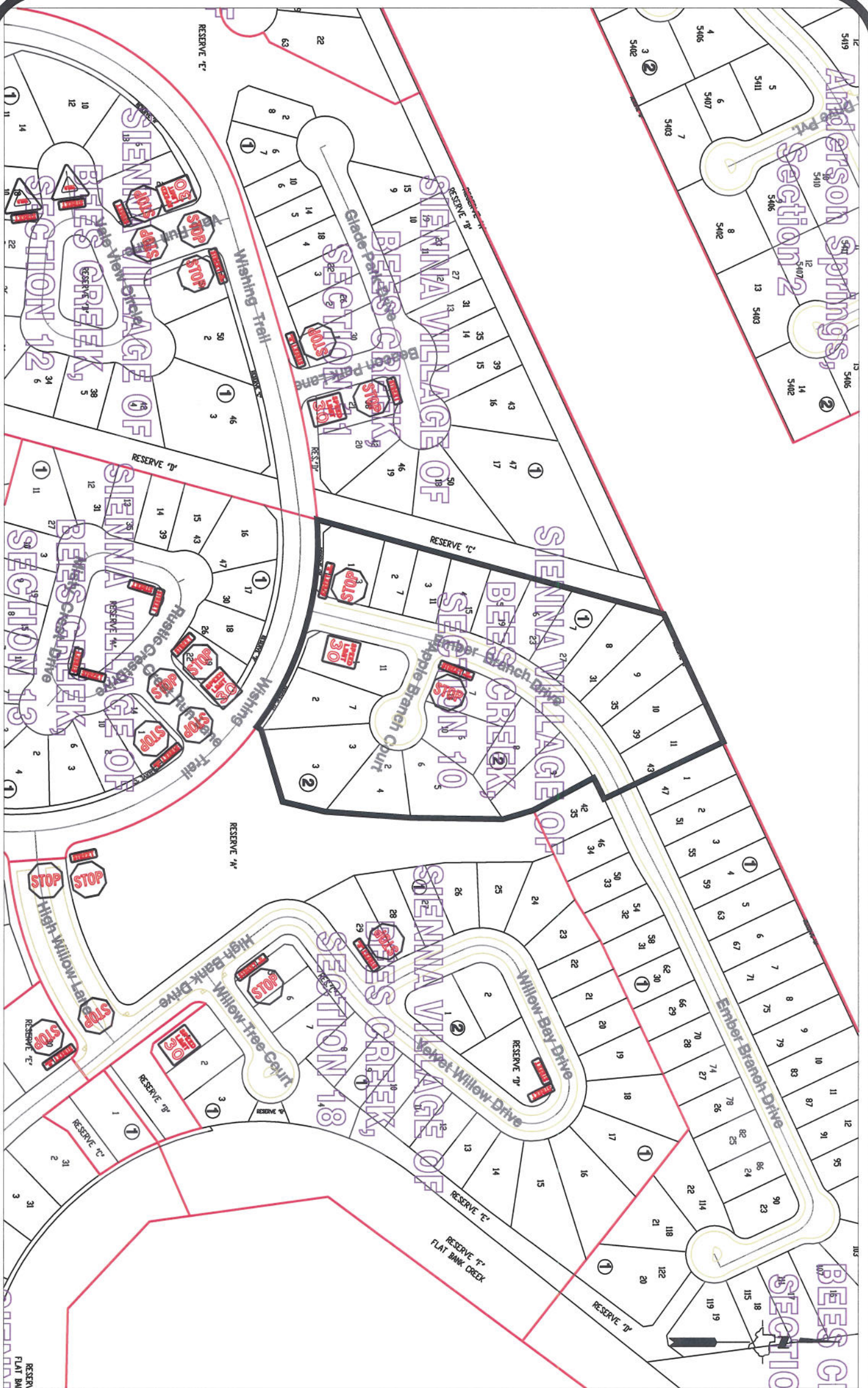
Scale

1" = 200'-0"

Sienna Village of Bees Creek,  
Section 9

Control Map and  
Traffic Sign Layout

Fort Bend County Engineering Dept.  
1124 Blume Road  
Rosenberg, Texas 77471



**Note:**

The purpose of this traffic control plan is to establish traffic control for Sienna Village of Bees Creek, Section 10.

Drawn By: L. Brdecka

Date: 11-24-14

Approved By: Clay Forster, PE *CAF*

Date: *01 DEC 14*

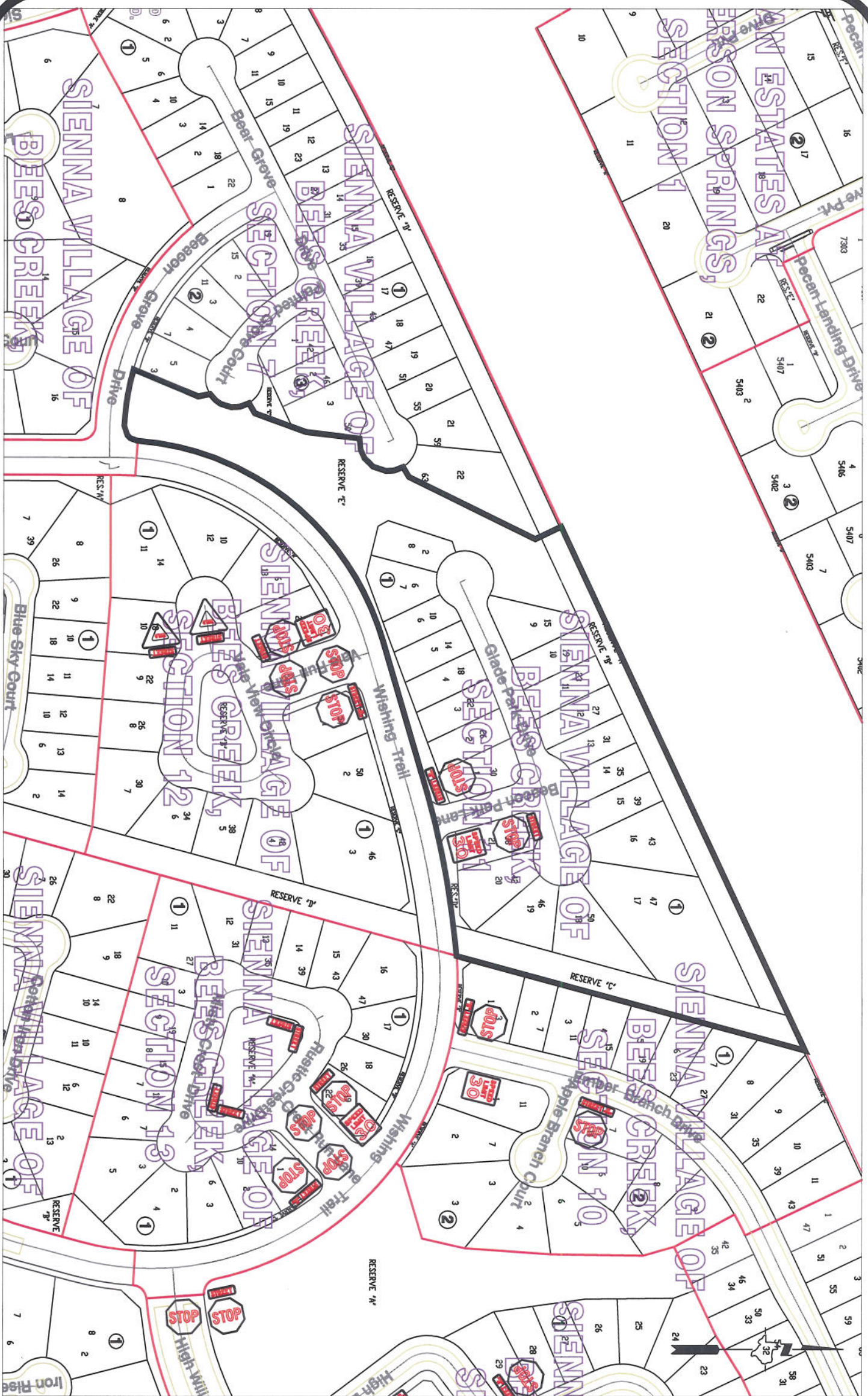
Scale

1" = 200'-0"

Sienna Village of Bees Creek,  
Section 10

Control Map and  
Traffic Sign Layout

Fort Bend County Engineering Dept.  
1124 Blume Road  
Rosenberg, Texas 77471



**Note:**

The purpose of this traffic control plan is to establish traffic control for Sienna Village of Bees Creek, Section 11.

Drawn By: L. Brdecka

Date: 11-24-14

Approved By: Clay Forster, PE *CF*

Date: 01 DEC 14

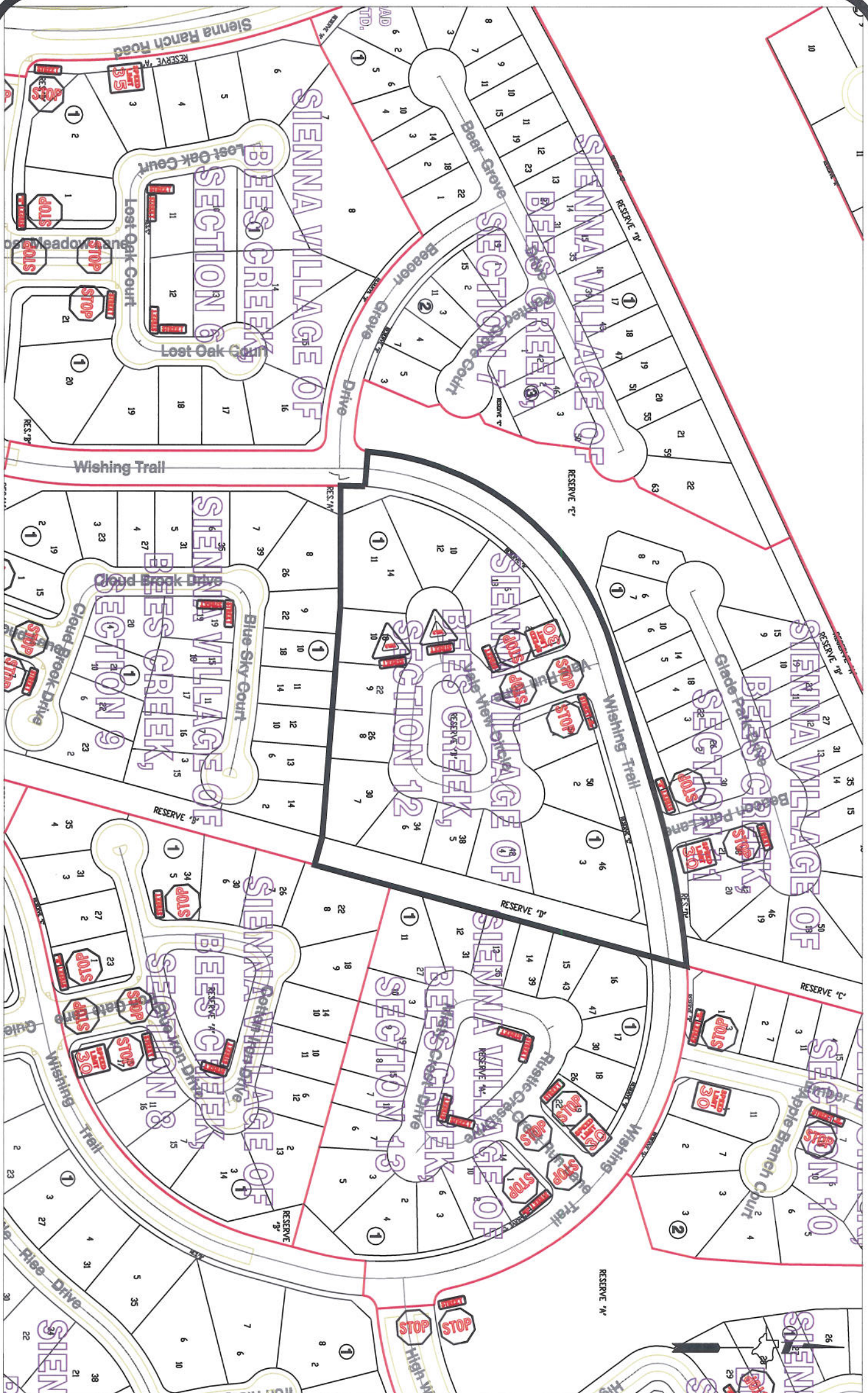
Scale

1" = 200'-0"

Sienna Village of Bees Creek,  
Section 11

Control Map and  
Traffic Sign Layout

Fort Bend County Engineering Dept.  
1124 Blume Road  
Rosenberg, Texas 77471



**Note:**

The purpose of this traffic control plan is to establish traffic control for Sienna Village of Bees Creek, Section 12.

Drawn By: L. Brdecka

Date: 11-24-14

Approved By: Clay Forister, PE *CAF*

Date: *01DEC14*

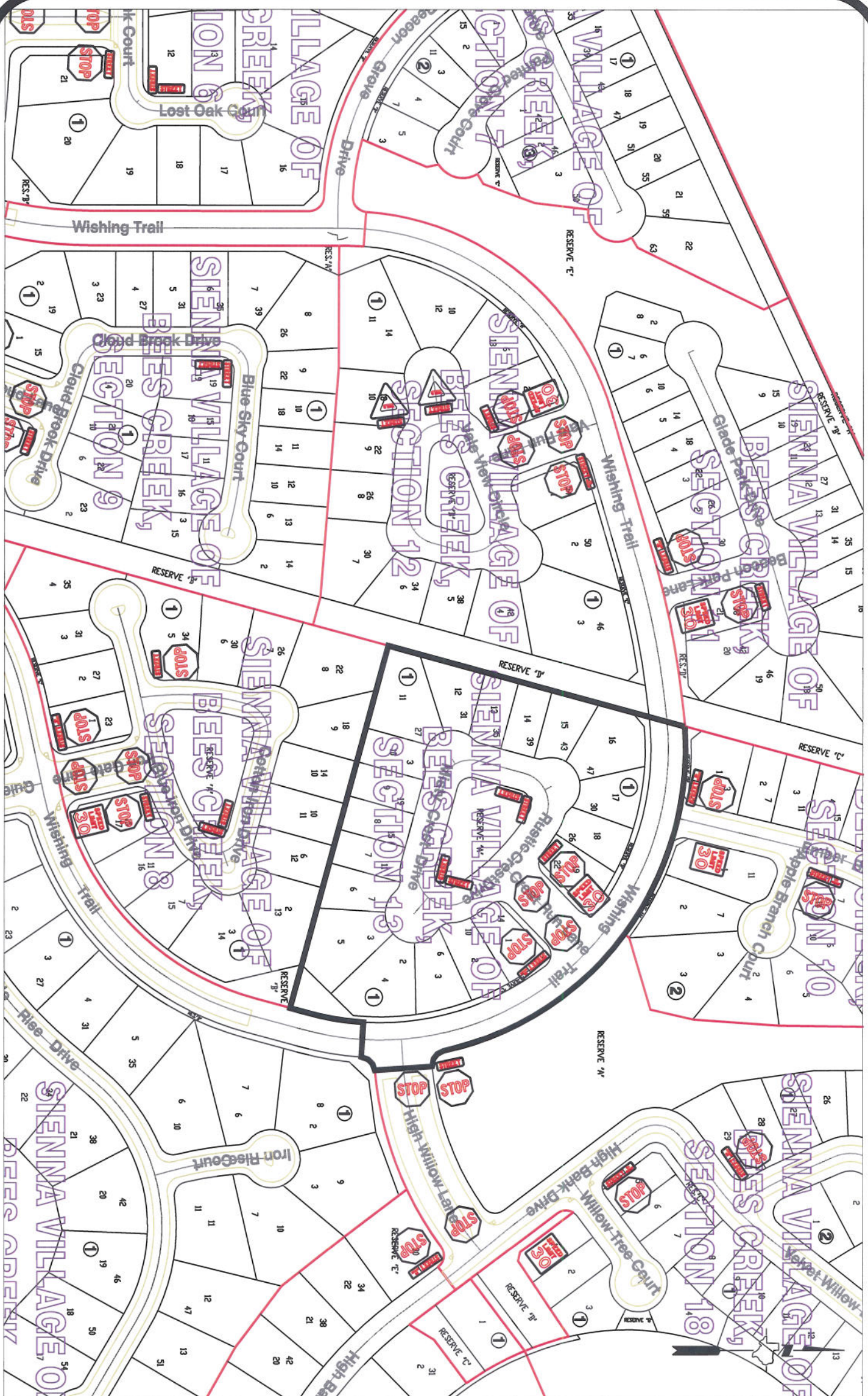
Scale

1" = 200'-0"

Sienna Village of Bees Creek,  
Section 12

Control Map and  
Traffic Sign Layout

Fort Bend County Engineering Dept.  
1124 Blume Road  
Rosenberg, Texas 77471



**Note:**

The purpose of this traffic control plan is to establish traffic control for Sienna Village of Bees Creek, Section 13.

Drawn By: L. Brdecka

Date: 11-24-14

Approved By: Clay Forster, PE **CAF**

Date: **01 DEC 14**

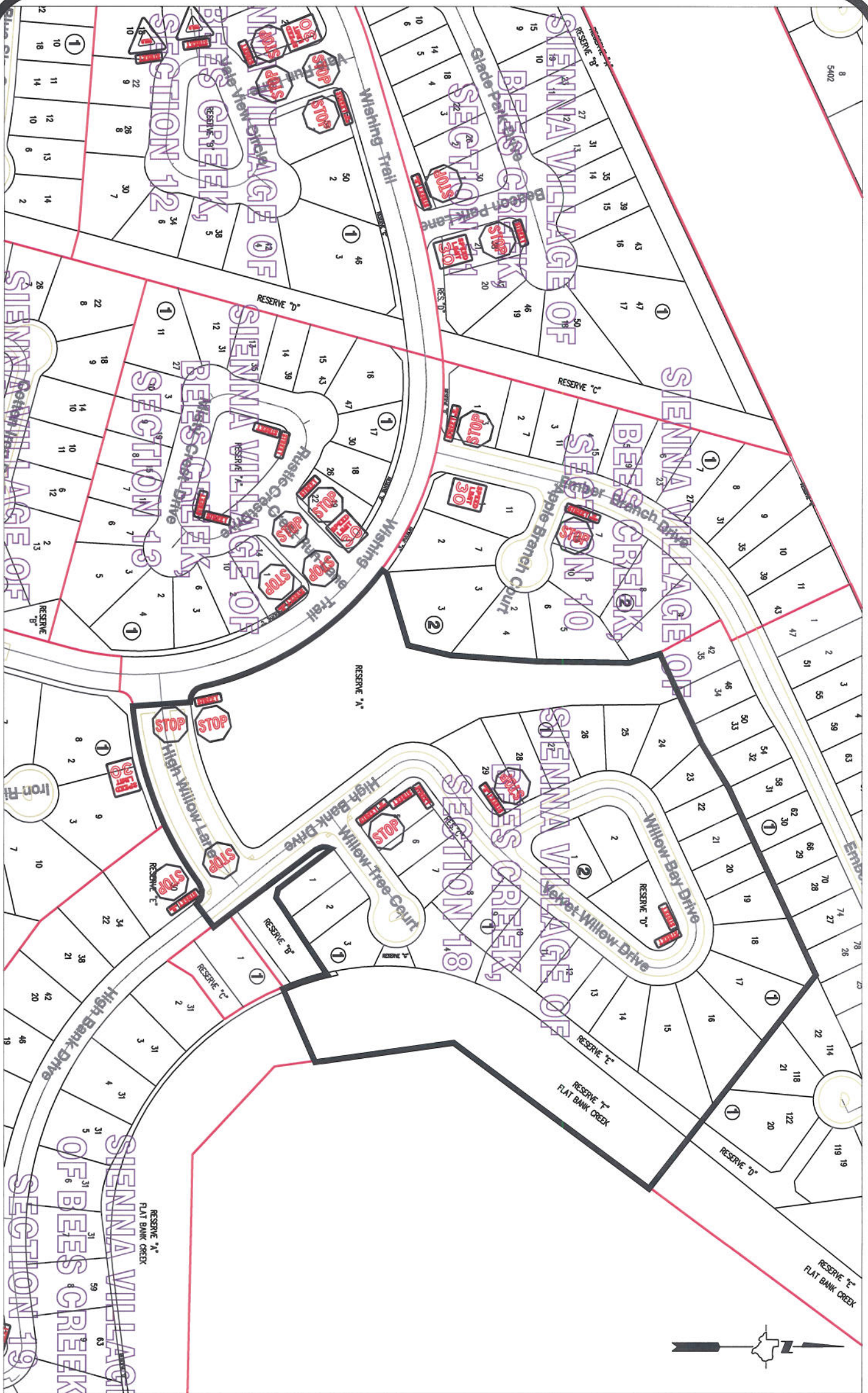
Scale

1" = 200'-0"

Sienna Village of Bees Creek,  
Section 13

Control Map and  
Traffic Sign Layout

Fort Bend County Engineering Dept.  
1124 Blume Road  
Rosenberg, Texas 77471



**Note:**

The purpose of this traffic control plan is to establish traffic control for Sienna Village of Bees Creek, Section 18.

Drawn By: L. Brdecka

Date: 12-1-14

Approved By: Clay Forster, PE

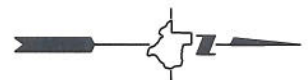
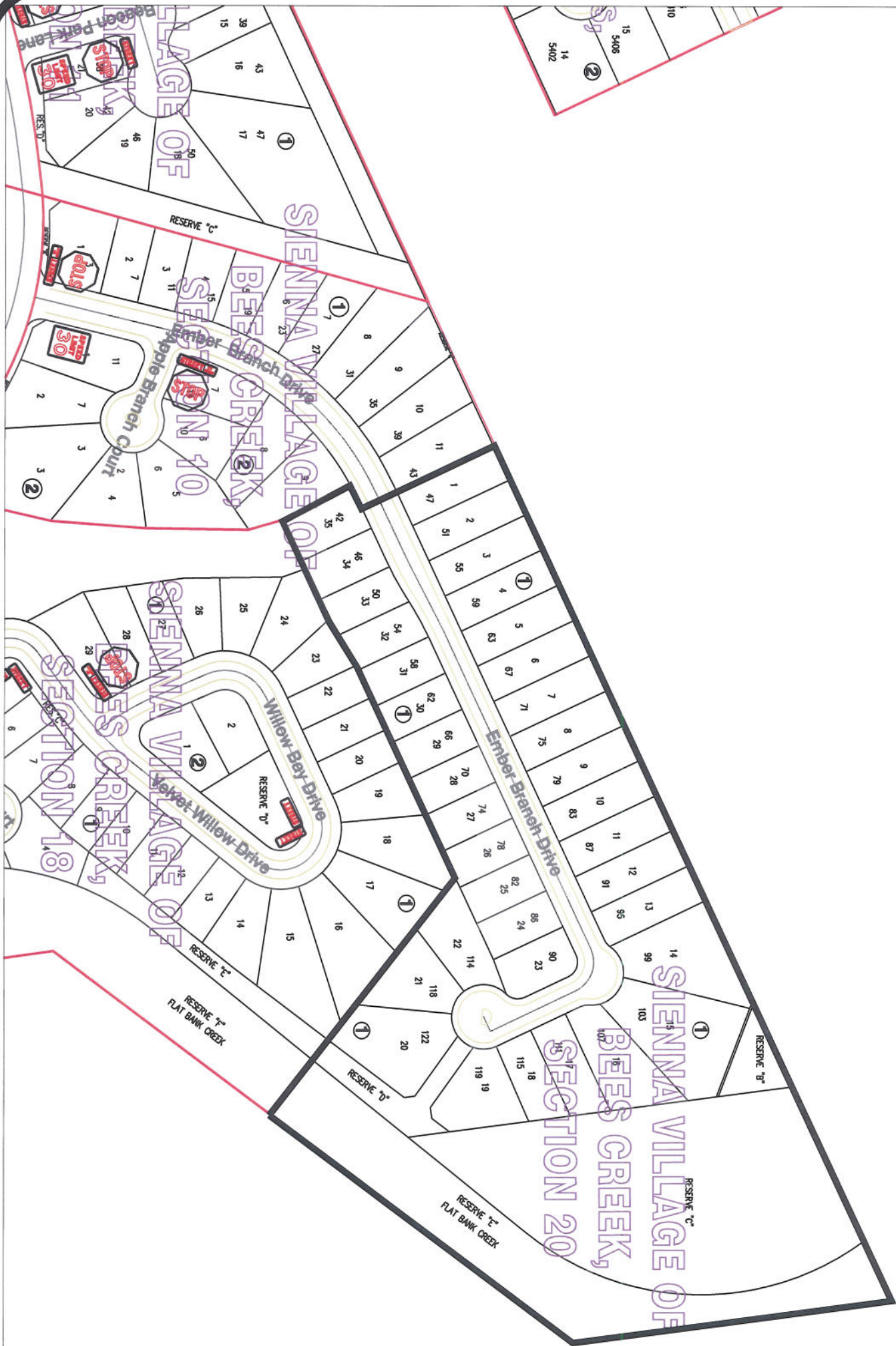
Date: 12/1/14

Scale

1" = 200'-0"

Sienna Village of Bees Creek,  
Section 18  
Control Map and  
Traffic Sign Layout

Fort Bend County Engineering Dept.  
1124 Blume Road  
Rosenberg, Texas 77471



**Note:**

The purpose of this traffic control plan is to establish traffic control for Sienna Village of Bees Creek, Section 20 as indicated on the drawing.

Drawn By: L. Brdecka

Date: 12-16-14

Approved By: Clay Forister, PE *CAF*

Date: *17 DEC 14*

Scale

1" = 200'-0"

Sienna Village of Bees Creek,  
Section 20  
Control Map and  
Traffic Sign Layout

Fort Bend County Engineering Dept.  
1124 Blume Road  
Rosenberg, Texas 77471