

**PLAT RECORDING SHEET**

**PLAT NAME:** Walnut Creek, Section Ten

**PLAT NO:** \_\_\_\_\_

**ACREAGE:** 9.689 Acres

**LEAGUE:** Eugene Wheat Survey

**ABSTRACT NUMBER:** 396

**NUMBER OF BLOCKS:** 2

**NUMBER OF LOTS:** 42

**NUMBER OF RESERVES:** 2

**OWNERS:** Lennar Homes of Texas Land and Construction, Ltd.

\_\_\_\_\_  
(DEPUTY CLERK)



LINE	BEARING	LENGTH	AREA	PERCENT	AREA	PERCENT
1	S 89° 57' 45\"/>	71.17	1078.47	12.50	8706.23	100.00
2	S 89° 57' 45\"/>	71.17	1078.47	12.50	8706.23	100.00
3	S 89° 57' 45\"/>	71.17	1078.47	12.50	8706.23	100.00
4	S 89° 57' 45\"/>	71.17	1078.47	12.50	8706.23	100.00
5	S 89° 57' 45\"/>	71.17	1078.47	12.50	8706.23	100.00
6	S 89° 57' 45\"/>	71.17	1078.47	12.50	8706.23	100.00
7	S 89° 57' 45\"/>	71.17	1078.47	12.50	8706.23	100.00
8	S 89° 57' 45\"/>	71.17	1078.47	12.50	8706.23	100.00
9	S 89° 57' 45\"/>	71.17	1078.47	12.50	8706.23	100.00
10	S 89° 57' 45\"/>	71.17	1078.47	12.50	8706.23	100.00
11	S 89° 57' 45\"/>	71.17	1078.47	12.50	8706.23	100.00
12	S 89° 57' 45\"/>	71.17	1078.47	12.50	8706.23	100.00
13	S 89° 57' 45\"/>	71.17	1078.47	12.50	8706.23	100.00
14	S 89° 57' 45\"/>	71.17	1078.47	12.50	8706.23	100.00
15	S 89° 57' 45\"/>	71.17	1078.47	12.50	8706.23	100.00
16	S 89° 57' 45\"/>	71.17	1078.47	12.50	8706.23	100.00
17	S 89° 57' 45\"/>	71.17	1078.47	12.50	8706.23	100.00
18	S 89° 57' 45\"/>	71.17	1078.47	12.50	8706.23	100.00
19	S 89° 57' 45\"/>	71.17	1078.47	12.50	8706.23	100.00
20	S 89° 57' 45\"/>	71.17	1078.47	12.50	8706.23	100.00
21	S 89° 57' 45\"/>	71.17	1078.47	12.50	8706.23	100.00
22	S 89° 57' 45\"/>	71.17	1078.47	12.50	8706.23	100.00
23	S 89° 57' 45\"/>	71.17	1078.47	12.50	8706.23	100.00
24	S 89° 57' 45\"/>	71.17	1078.47	12.50	8706.23	100.00
25	S 89° 57' 45\"/>	71.17	1078.47	12.50	8706.23	100.00
26	S 89° 57' 45\"/>	71.17	1078.47	12.50	8706.23	100.00
27	S 89° 57' 45\"/>	71.17	1078.47	12.50	8706.23	100.00
28	S 89° 57' 45\"/>	71.17	1078.47	12.50	8706.23	100.00
29	S 89° 57' 45\"/>	71.17	1078.47	12.50	8706.23	100.00
30	S 89° 57' 45\"/>	71.17	1078.47	12.50	8706.23	100.00
31	S 89° 57' 45\"/>	71.17	1078.47	12.50	8706.23	100.00
32	S 89° 57' 45\"/>	71.17	1078.47	12.50	8706.23	100.00
33	S 89° 57' 45\"/>	71.17	1078.47	12.50	8706.23	100.00
34	S 89° 57' 45\"/>	71.17	1078.47	12.50	8706.23	100.00
35	S 89° 57' 45\"/>	71.17	1078.47	12.50	8706.23	100.00
36	S 89° 57' 45\"/>	71.17	1078.47	12.50	8706.23	100.00
37	S 89° 57' 45\"/>	71.17	1078.47	12.50	8706.23	100.00
38	S 89° 57' 45\"/>	71.17	1078.47	12.50	8706.23	100.00
39	S 89° 57' 45\"/>	71.17	1078.47	12.50	8706.23	100.00
40	S 89° 57' 45\"/>	71.17	1078.47	12.50	8706.23	100.00
41	S 89° 57' 45\"/>	71.17	1078.47	12.50	8706.23	100.00
42	S 89° 57' 45\"/>	71.17	1078.47	12.50	8706.23	100.00

LINE	BEARING	LENGTH	AREA	PERCENT	AREA	PERCENT
1	S 89° 57' 45\"/>	71.17	1078.47	12.50	8706.23	100.00
2	S 89° 57' 45\"/>	71.17	1078.47	12.50	8706.23	100.00
3	S 89° 57' 45\"/>	71.17	1078.47	12.50	8706.23	100.00
4	S 89° 57' 45\"/>	71.17	1078.47	12.50	8706.23	100.00
5	S 89° 57' 45\"/>	71.17	1078.47	12.50	8706.23	100.00
6	S 89° 57' 45\"/>	71.17	1078.47	12.50	8706.23	100.00
7	S 89° 57' 45\"/>	71.17	1078.47	12.50	8706.23	100.00
8	S 89° 57' 45\"/>	71.17	1078.47	12.50	8706.23	100.00
9	S 89° 57' 45\"/>	71.17	1078.47	12.50	8706.23	100.00
10	S 89° 57' 45\"/>	71.17	1078.47	12.50	8706.23	100.00
11	S 89° 57' 45\"/>	71.17	1078.47	12.50	8706.23	100.00
12	S 89° 57' 45\"/>	71.17	1078.47	12.50	8706.23	100.00
13	S 89° 57' 45\"/>	71.17	1078.47	12.50	8706.23	100.00
14	S 89° 57' 45\"/>	71.17	1078.47	12.50	8706.23	100.00
15	S 89° 57' 45\"/>	71.17	1078.47	12.50	8706.23	100.00
16	S 89° 57' 45\"/>	71.17	1078.47	12.50	8706.23	100.00
17	S 89° 57' 45\"/>	71.17	1078.47	12.50	8706.23	100.00
18	S 89° 57' 45\"/>	71.17	1078.47	12.50	8706.23	100.00
19	S 89° 57' 45\"/>	71.17	1078.47	12.50	8706.23	100.00
20	S 89° 57' 45\"/>	71.17	1078.47	12.50	8706.23	100.00
21	S 89° 57' 45\"/>	71.17	1078.47	12.50	8706.23	100.00
22	S 89° 57' 45\"/>	71.17	1078.47	12.50	8706.23	100.00
23	S 89° 57' 45\"/>	71.17	1078.47	12.50	8706.23	100.00
24	S 89° 57' 45\"/>	71.17	1078.47	12.50	8706.23	100.00
25	S 89° 57' 45\"/>	71.17	1078.47	12.50	8706.23	100.00
26	S 89° 57' 45\"/>	71.17	1078.47	12.50	8706.23	100.00
27	S 89° 57' 45\"/>	71.17	1078.47	12.50	8706.23	100.00
28	S 89° 57' 45\"/>	71.17	1078.47	12.50	8706.23	100.00
29	S 89° 57' 45\"/>	71.17	1078.47	12.50	8706.23	100.00
30	S 89° 57' 45\"/>	71.17	1078.47	12.50	8706.23	100.00
31	S 89° 57' 45\"/>	71.17	1078.47	12.50	8706.23	100.00
32	S 89° 57' 45\"/>	71.17	1078.47	12.50	8706.23	100.00
33	S 89° 57' 45\"/>	71.17	1078.47	12.50	8706.23	100.00
34	S 89° 57' 45\"/>	71.17	1078.47	12.50	8706.23	100.00
35	S 89° 57' 45\"/>	71.17	1078.47	12.50	8706.23	100.00
36	S 89° 57' 45\"/>	71.17	1078.47	12.50	8706.23	100.00
37	S 89° 57' 45\"/>	71.17	1078.47	12.50	8706.23	100.00
38	S 89° 57' 45\"/>	71.17	1078.47	12.50	8706.23	100.00
39	S 89° 57' 45\"/>	71.17	1078.47	12.50	8706.23	100.00
40	S 89° 57' 45\"/>	71.17	1078.47	12.50	8706.23	100.00
41	S 89° 57' 45\"/>	71.17	1078.47	12.50	8706.23	100.00
42	S 89° 57' 45\"/>	71.17	1078.47	12.50	8706.23	100.00

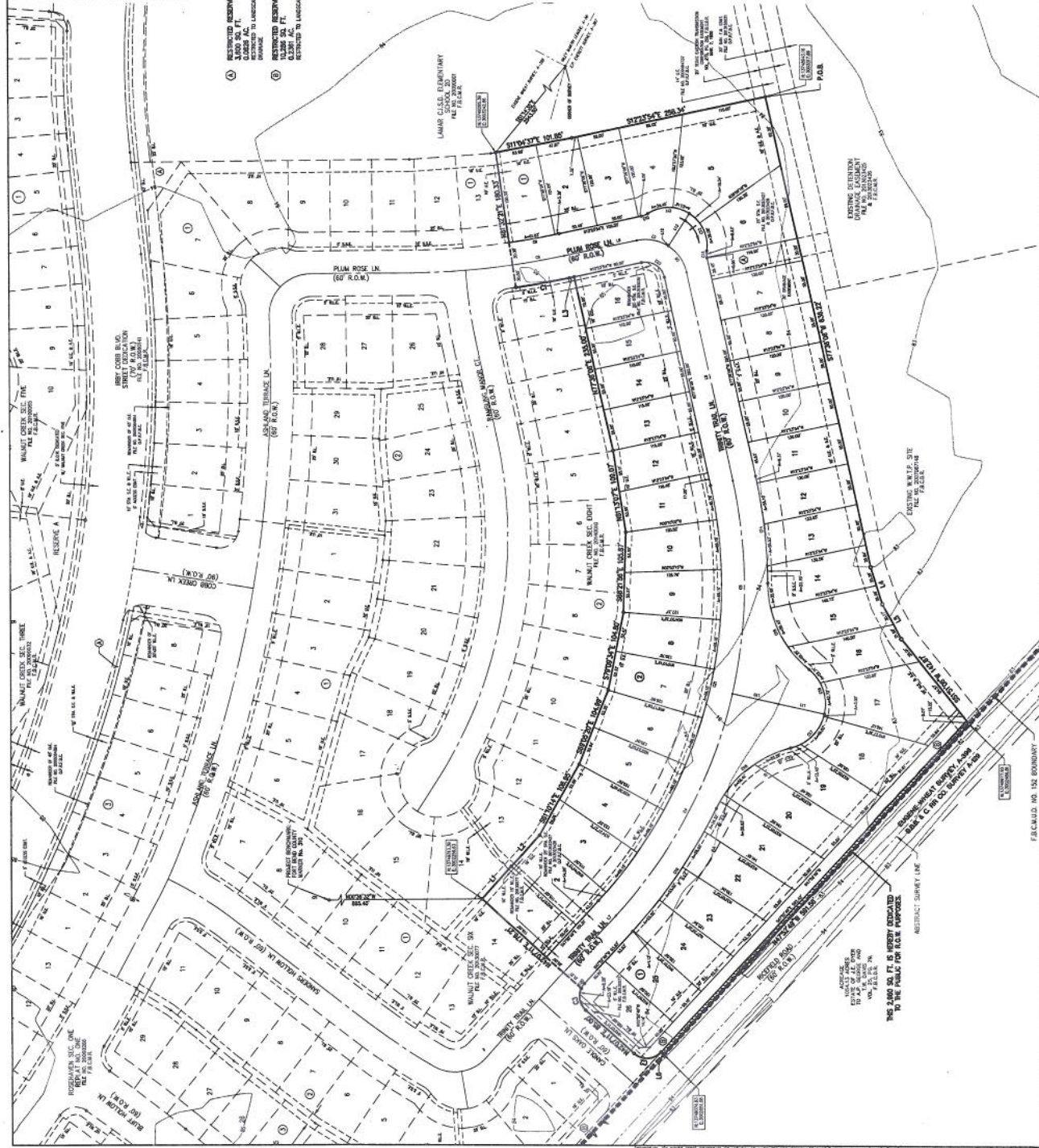
RESTRICTED RESERVE A  
 42 LOTS, 2 BLOCKS, 2 RESTRICTED RESERVES  
 EUGENE WHEAT SURVEY, A-386  
 FORT BEND COUNTY, TEXAS

**WALNUT CREEK SECTION TEN**  
 A SUBDIVISION OF  
**9.669 ACRES**  
 CONTAINING  
**42 LOTS, 2 BLOCKS, 2 RESTRICTED RESERVES**  
 CITY OF THE  
**EUGENE WHEAT SURVEY, A-386**  
 FORT BEND COUNTY, TEXAS

**OWNER:** IRRVALL HOMES OF TEXAS LAND AND CONSTRUCTION, LTD.  
**LANDPLANNER:** IRRVALL HOMES OF TEXAS LAND AND CONSTRUCTION, LTD.  
**ENGINEER/SURVEYOR:** IDS Engineering Group

0333 P.M. 11/20/20  
 11/20/20  
 11/20/20

NO. 2 AND 30 FT. IS BEING DEDICATED TO THE PUBLIC FOR THESE PURPOSES.



STATE OF TEXAS  
COUNTY OF FORT BEND

IN WITNESS WHEREOF, I have hereunto set my hand and the seal of said County, this 14th day of August, 2003.

By: *[Signature]*  
County Clerk

By: *[Signature]*  
City Engineer

By: *[Signature]*  
City Commissioner

By: *[Signature]*  
City Commissioner

By: *[Signature]*  
City Commissioner

By: *[Signature]*  
City Commissioner

By: *[Signature]*  
City Commissioner

By: *[Signature]*  
City Commissioner

By: *[Signature]*  
City Commissioner

By: *[Signature]*  
City Commissioner

By: *[Signature]*  
City Commissioner

By: *[Signature]*  
City Commissioner

By: *[Signature]*  
City Commissioner

By: *[Signature]*  
City Commissioner

By: *[Signature]*  
City Commissioner

STATE OF TEXAS  
COUNTY OF FORT BEND

IN WITNESS WHEREOF, I have hereunto set my hand and the seal of said County, this 14th day of August, 2003.

By: *[Signature]*  
County Clerk

By: *[Signature]*  
City Engineer

By: *[Signature]*  
City Commissioner

By: *[Signature]*  
City Commissioner

By: *[Signature]*  
City Commissioner

By: *[Signature]*  
City Commissioner

By: *[Signature]*  
City Commissioner

By: *[Signature]*  
City Commissioner

By: *[Signature]*  
City Commissioner

By: *[Signature]*  
City Commissioner

By: *[Signature]*  
City Commissioner

By: *[Signature]*  
City Commissioner

By: *[Signature]*  
City Commissioner

By: *[Signature]*  
City Commissioner

By: *[Signature]*  
City Commissioner

STATE OF TEXAS  
COUNTY OF FORT BEND

IN WITNESS WHEREOF, I have hereunto set my hand and the seal of said County, this 14th day of August, 2003.

By: *[Signature]*  
County Clerk

By: *[Signature]*  
City Engineer

By: *[Signature]*  
City Commissioner

By: *[Signature]*  
City Commissioner

By: *[Signature]*  
City Commissioner

By: *[Signature]*  
City Commissioner

By: *[Signature]*  
City Commissioner

By: *[Signature]*  
City Commissioner

By: *[Signature]*  
City Commissioner

By: *[Signature]*  
City Commissioner

By: *[Signature]*  
City Commissioner

By: *[Signature]*  
City Commissioner

By: *[Signature]*  
City Commissioner

By: *[Signature]*  
City Commissioner

By: *[Signature]*  
City Commissioner

STATE OF TEXAS  
COUNTY OF FORT BEND

IN WITNESS WHEREOF, I have hereunto set my hand and the seal of said County, this 14th day of August, 2003.

By: *[Signature]*  
County Clerk

By: *[Signature]*  
City Engineer

By: *[Signature]*  
City Commissioner

By: *[Signature]*  
City Commissioner

By: *[Signature]*  
City Commissioner

By: *[Signature]*  
City Commissioner

By: *[Signature]*  
City Commissioner

By: *[Signature]*  
City Commissioner

By: *[Signature]*  
City Commissioner

By: *[Signature]*  
City Commissioner

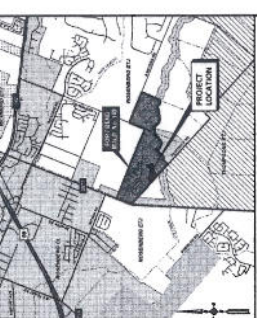
By: *[Signature]*  
City Commissioner

By: *[Signature]*  
City Commissioner

By: *[Signature]*  
City Commissioner

By: *[Signature]*  
City Commissioner

By: *[Signature]*  
City Commissioner



VICINITY MAP  
KEY MAP: 6450 & 646 A

1. Richard B. Suckale, County Engineer, do hereby certify that the plat of this addition conforms with all of the existing laws and regulations of this office as required by the Fort Bend County Code, Chapter 10, Article 1, Section 10.01, and that the same are in compliance with the requirements of the Texas State Constitution and the Texas State Statutes.

APPROVED BY THE COMMISSIONERS' COURT OF FORT BEND COUNTY, TEXAS, this 14th day of August, 2003.

Richard B. Suckale  
County Engineer  
Fort Bend County, Texas

By: *[Signature]*  
City Commissioner

By: *[Signature]*  
City Commissioner

By: *[Signature]*  
City Commissioner

By: *[Signature]*  
City Commissioner

By: *[Signature]*  
City Commissioner

By: *[Signature]*  
City Commissioner

By: *[Signature]*  
City Commissioner

STATE OF TEXAS  
COUNTY OF FORT BEND

IN WITNESS WHEREOF, I have hereunto set my hand and the seal of said County, this 14th day of August, 2003.

By: *[Signature]*  
County Clerk

By: *[Signature]*  
City Engineer

By: *[Signature]*  
City Commissioner

By: *[Signature]*  
City Commissioner

By: *[Signature]*  
City Commissioner

By: *[Signature]*  
City Commissioner

By: *[Signature]*  
City Commissioner

By: *[Signature]*  
City Commissioner

By: *[Signature]*  
City Commissioner

By: *[Signature]*  
City Commissioner

By: *[Signature]*  
City Commissioner

By: *[Signature]*  
City Commissioner

By: *[Signature]*  
City Commissioner

By: *[Signature]*  
City Commissioner

By: *[Signature]*  
City Commissioner

STATE OF TEXAS  
COUNTY OF FORT BEND

IN WITNESS WHEREOF, I have hereunto set my hand and the seal of said County, this 14th day of August, 2003.

By: *[Signature]*  
County Clerk

By: *[Signature]*  
City Engineer

By: *[Signature]*  
City Commissioner

By: *[Signature]*  
City Commissioner

By: *[Signature]*  
City Commissioner

By: *[Signature]*  
City Commissioner

By: *[Signature]*  
City Commissioner

By: *[Signature]*  
City Commissioner

By: *[Signature]*  
City Commissioner

By: *[Signature]*  
City Commissioner

By: *[Signature]*  
City Commissioner

By: *[Signature]*  
City Commissioner

By: *[Signature]*  
City Commissioner

By: *[Signature]*  
City Commissioner

By: *[Signature]*  
City Commissioner

STATE OF TEXAS  
COUNTY OF FORT BEND

IN WITNESS WHEREOF, I have hereunto set my hand and the seal of said County, this 14th day of August, 2003.

By: *[Signature]*  
County Clerk

By: *[Signature]*  
City Engineer

By: *[Signature]*  
City Commissioner

By: *[Signature]*  
City Commissioner

By: *[Signature]*  
City Commissioner

By: *[Signature]*  
City Commissioner

By: *[Signature]*  
City Commissioner

By: *[Signature]*  
City Commissioner

By: *[Signature]*  
City Commissioner

By: *[Signature]*  
City Commissioner

By: *[Signature]*  
City Commissioner

By: *[Signature]*  
City Commissioner

By: *[Signature]*  
City Commissioner

By: *[Signature]*  
City Commissioner

By: *[Signature]*  
City Commissioner