

PLAT RECORDING SHEET

PLAT NAME: Marshall Oaks, Sec. 2

PLAT NO: _____

ACREAGE: 25.75

LEAGUE: Stephen Hobermaker Survey

ABSTRACT NUMBER: 189

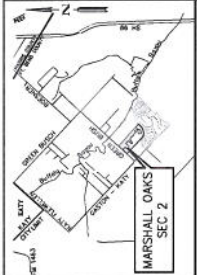
NUMBER OF BLOCKS: 4

NUMBER OF LOTS: 85

NUMBER OF RESERVES: 3

OWNERS: D. R. Horton – Texas, Ltd.

(DEPUTY CLERK)



VICINITY MAP
FORT BEND COUNTY MAP 4847

16. The property shown on this plat is the same as that shown on the plat recorded in the Public Records of Fort Bend County, Texas, on or about March 2, 2014, under the name of Greenway Homes, L.P., a limited liability partnership organized under the laws of the State of Texas, and incorporated in Texas, Map Number: 1803102101. The plat is being recorded in the Public Records of Fort Bend County, Texas, for the purpose of creating a new plat for the same property.

17. The plat is being recorded in the Public Records of Fort Bend County, Texas, for the purpose of creating a new plat for the same property.

18. The plat is being recorded in the Public Records of Fort Bend County, Texas, for the purpose of creating a new plat for the same property.

19. The plat is being recorded in the Public Records of Fort Bend County, Texas, for the purpose of creating a new plat for the same property.

20. The plat is being recorded in the Public Records of Fort Bend County, Texas, for the purpose of creating a new plat for the same property.

21. The plat is being recorded in the Public Records of Fort Bend County, Texas, for the purpose of creating a new plat for the same property.

22. The plat is being recorded in the Public Records of Fort Bend County, Texas, for the purpose of creating a new plat for the same property.

23. The plat is being recorded in the Public Records of Fort Bend County, Texas, for the purpose of creating a new plat for the same property.

24. The plat is being recorded in the Public Records of Fort Bend County, Texas, for the purpose of creating a new plat for the same property.

25. The plat is being recorded in the Public Records of Fort Bend County, Texas, for the purpose of creating a new plat for the same property.

26. The plat is being recorded in the Public Records of Fort Bend County, Texas, for the purpose of creating a new plat for the same property.

27. The plat is being recorded in the Public Records of Fort Bend County, Texas, for the purpose of creating a new plat for the same property.

28. The plat is being recorded in the Public Records of Fort Bend County, Texas, for the purpose of creating a new plat for the same property.

29. The plat is being recorded in the Public Records of Fort Bend County, Texas, for the purpose of creating a new plat for the same property.

30. The plat is being recorded in the Public Records of Fort Bend County, Texas, for the purpose of creating a new plat for the same property.

31. The plat is being recorded in the Public Records of Fort Bend County, Texas, for the purpose of creating a new plat for the same property.

32. The plat is being recorded in the Public Records of Fort Bend County, Texas, for the purpose of creating a new plat for the same property.

33. The plat is being recorded in the Public Records of Fort Bend County, Texas, for the purpose of creating a new plat for the same property.

34. The plat is being recorded in the Public Records of Fort Bend County, Texas, for the purpose of creating a new plat for the same property.

MARSHALL OAKS SEC 2

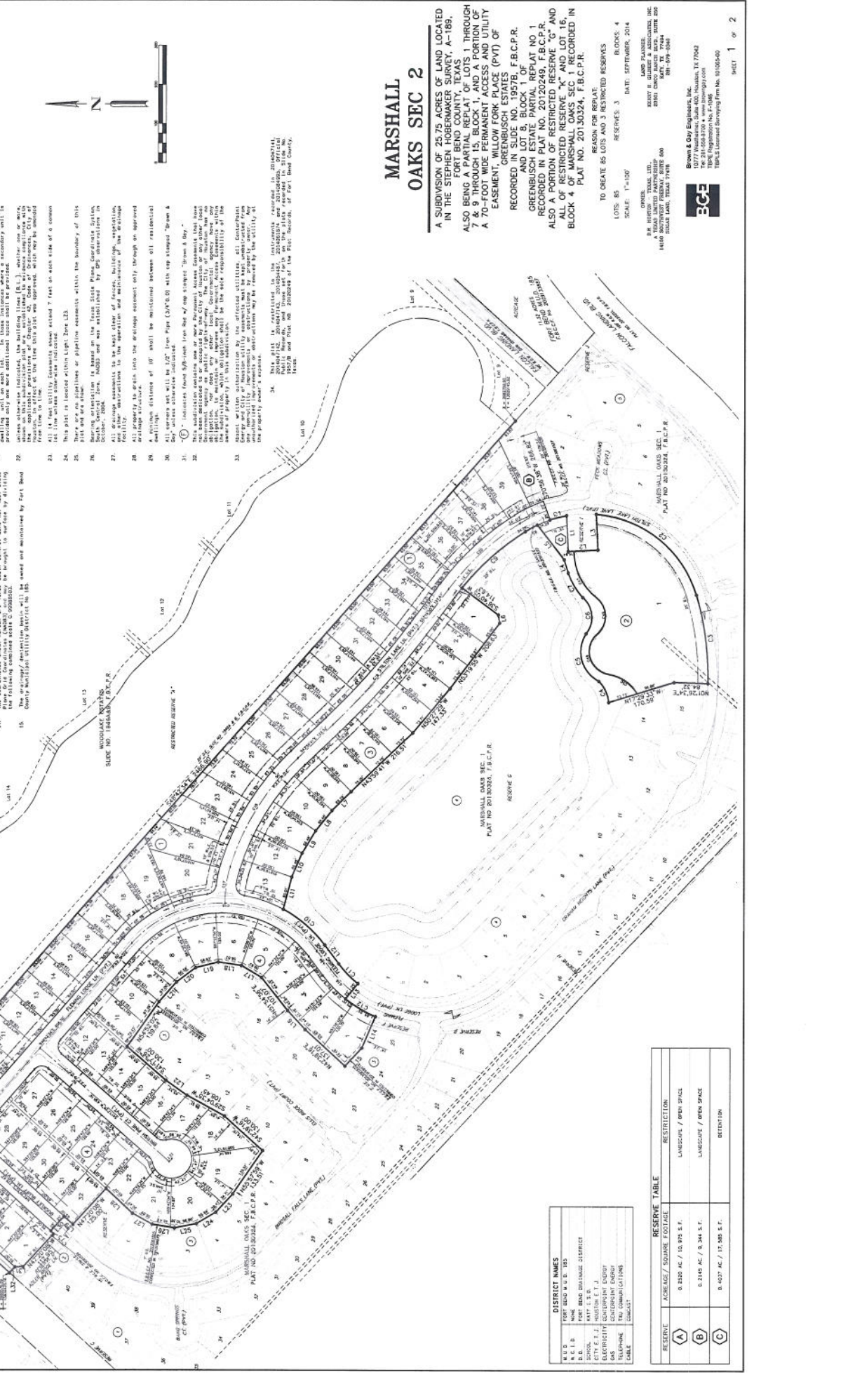
A SUBDIVISION OF 25.75 ACRES OF LAND LOCATED IN THE STEPHEN HOBEMAKER SURVEY, A-189, GREENWAY HOMES, L.P., A LIMITED LIABILITY PARTNERSHIP ORGANIZED UNDER THE LAWS OF THE STATE OF TEXAS, AND INCORPORATED IN TEXAS, MAP NUMBER: 1803102101, AS BEING A PART OF PLAT NO. 20120249, F.B.C.P.R., 7 & 9 THROUGH 15, BLOCK 1, AND A PORTION OF A 70-FOOT WIDE PERMANENT ACCESS AND UTILITY EASEMENT, WILLOW FORK PLACE (PVT) OF GREENBUSH ESTATES RECORDED IN PLAT NO. 20120249, F.B.C.P.R., GREENBUSH ESTATE PARTIAL REPEAT NO. 1 RECORDED IN PLAT NO. 20120249, F.B.C.P.R., ALSO A PORTION OF RESTRICTED RESERVE "G" AND BLOCK 4 OF RESTRICTED RESERVE "K" AND LOT 16, BLOCK 4 OF MARSHALL OAKS SEC. 1 RECORDED IN PLAT NO. 20130324, F.B.C.P.R.

REASON FOR REPEAT:
TO CREATE 85 LOTS AND 3 RESTRICTED RESERVES

RECORDING INFORMATION:
DATE: SEPTEMBER, 2014
SCALE: 1"=100'
BLOCKS: 4
RECORDING OFFICE: FORT BEND COUNTY CLERK
1400 BRUNNEN FERRYWAY, SUITE 800
HOUSTON, TEXAS 77056
PHONE: 281.291.1000

PREPARED BY:
Brown & Clay Engineers, Inc.
10777 Westheimer, Suite 400, Houston, TX 77042
PHONE: 281.291.1000
FAX: 281.291.1001
WWW.BROWNANDCLAY.COM

DATE: SEPTEMBER, 2014
SCALE: 1"=100'
BLOCKS: 4
RECORDING OFFICE: FORT BEND COUNTY CLERK
1400 BRUNNEN FERRYWAY, SUITE 800
HOUSTON, TEXAS 77056
PHONE: 281.291.1000



RESERVE TABLE

RESERVE	ACREAGE / SQUARE FOOTAGE	RESTRICTION
A	0.230 AC. / 10,810 S.F.	LANDSCAPE / OPEN SPACE
B	0.310 AC. / 13,344 S.F.	LANDSCAPE / OPEN SPACE
C	0.427 AC. / 18,585 S.F.	RETENTION

DISTRICT NAMES	RECORDING INFORMATION
M.P.D.	FORT BEND COUNTY
R.E.L.B.	HOUSTON ELECTRIC
S.W.C.	HOUSTON ELECTRIC
E.T.T.	HOUSTON ELECTRIC
E.C.E.	HOUSTON ELECTRIC
T.E.C.	HOUSTON ELECTRIC
C.A.B.	HOUSTON ELECTRIC

1. "U.L." indicates "Utility Easement".
2. "B.L." indicates "Building Line".
3. "M.L.E." indicates "Main Line Easement".
4. "M.W.E." indicates "Main Water Easement".
5. "T.M.E." indicates "Fire Hydrant Easement".
6. "S.M.S.E." indicates "Sanitary Sewer Easement".
7. "S.W.S.E." indicates "Sewer Easement".
8. "D.E." indicates "Drainage Easement".
9. "A.E." indicates "Aerial Easement".
10. "T.B.C.C.P." indicates "Title Record of Fort Bend County".
11. "F.B.C.P.R." indicates "Fort Bend County Plat Record of Best Property".
12. "G.P.R.B.P." indicates "Official Public Record of Best Property".
13. "P.R.B.P." indicates "Official Public Record of Best Property".
14. The plat is being recorded in the Public Records of Fort Bend County, Texas, for the purpose of creating a new plat for the same property.
15. The plat is being recorded in the Public Records of Fort Bend County, Texas, for the purpose of creating a new plat for the same property.



VICINITY MAP
FORT BEND KEY MAP 4847

I, Richard B. Skellick, Fort Bend County Engineer, do hereby certify that the plat of this subdivision complies with all applicable laws and regulations of the State of Texas and the County of Fort Bend, Texas, and that the plat of this subdivision is a true and correct copy of the original as recorded in the public records of the County of Fort Bend, Texas. The plat of this subdivision is subject to the provisions of the Subdivision Control Act of the State of Texas, and the provisions of the Subdivision Control Act of the County of Fort Bend, Texas.

Approved by the Commissioners Court of Fort Bend County, Texas, this _____ day of _____, 2014.

Richard E. Meyer, Jr.
County Judge

Richard E. Meyer, Jr.
County Commissioner

Richard E. Meyer, Jr.
County Commissioner

Richard E. Meyer, Jr.
County Commissioner

I, Glenn Wilson, County Clerk in and for Fort Bend County, Texas, hereby certify that the foregoing instrument with its conditions of subdivision as filed for recordation in my office on _____ day of _____, 2014, at _____ o'clock _____ of the day, is a true and correct copy of the original as recorded in the public records of the County of Fort Bend, Texas. The day and date here written.

Glenn Wilson
County Clerk
Fort Bend County, Texas

By: _____
Deputy

MARSHALL OAKS SEC 2

A SUBDIVISION OF 25.75 ACRES OF LAND LOCATED IN THE STEPHEN HOBBAKER SURVEY, A-189, FORT BEND COUNTY, TEXAS ALSO BEING A PARTIAL REPLAT OF LOTS 1 THROUGH 7 & 9 THROUGH 15, BLOCK 1, AND A PORTION OF A 70-FOOT WIDE PERMANENT ACCESS AND UTILITY EASEMENT, WILLOW FORK PLACE (PVT) OF GREENBUSH ESTATES, RECORDS BOOK 101, PAGE 10, FORT BEND COUNTY, TEXAS, AND LOT 8, BLOCK 1, RECORDS BOOK 101, PAGE 10, FORT BEND COUNTY, TEXAS, AND A PORTION OF RESTRICTED RESERVE "C" AND ALL OF RESTRICTED RESERVE "K" AND LOT 16, BLOCK 4 OF MARSHALL OAKS SEC 1, RECORDS IN PLAT NO. 20130324, F.B.C.P.R.

REASON FOR REPLAT:
TO CREATE 85 LOTS AND 3 RESTRICTED RESERVES
LOTS: 85
BLOCKS: 4
DATE: SEPTEMBER, 2014
SCALE: 1"=100'
RESERVES: 3
LAND PLANNER:
BROWN & COY ENGINEERS, INC.
2500 WEST GULFSTREAM AVENUE
SUITE 200
DALLAS, TEXAS 75246
PHONE: 972-350-0000
FAX: 972-350-0000

Brown & Coy Engineers, Inc.
14100 JACOBSON DRIVE, SUITE 300
DALLAS, TEXAS 75246
141-255-8200 • www.browncoy.com
1895 LUGBURN COMPANY File No. 1008600

LINE DATA

NUMBER	BEARING (D.M.S.)	DISTANCE
1	S 89°53'19" W	11.10
2	S 87°50'12" E	11.10
3	S 87°50'12" E	11.10
4	S 87°50'12" E	11.10
5	S 87°50'12" E	11.10
6	S 87°50'12" E	11.10
7	S 87°50'12" E	11.10
8	S 87°50'12" E	11.10
9	S 87°50'12" E	11.10
10	S 87°50'12" E	11.10
11	S 87°50'12" E	11.10
12	S 87°50'12" E	11.10
13	S 87°50'12" E	11.10
14	S 87°50'12" E	11.10
15	S 87°50'12" E	11.10
16	S 87°50'12" E	11.10
17	S 87°50'12" E	11.10
18	S 87°50'12" E	11.10
19	S 87°50'12" E	11.10
20	S 87°50'12" E	11.10
21	S 87°50'12" E	11.10
22	S 87°50'12" E	11.10
23	S 87°50'12" E	11.10
24	S 87°50'12" E	11.10
25	S 87°50'12" E	11.10
26	S 87°50'12" E	11.10
27	S 87°50'12" E	11.10
28	S 87°50'12" E	11.10
29	S 87°50'12" E	11.10
30	S 87°50'12" E	11.10
31	S 87°50'12" E	11.10
32	S 87°50'12" E	11.10
33	S 87°50'12" E	11.10
34	S 87°50'12" E	11.10
35	S 87°50'12" E	11.10
36	S 87°50'12" E	11.10
37	S 87°50'12" E	11.10
38	S 87°50'12" E	11.10
39	S 87°50'12" E	11.10
40	S 87°50'12" E	11.10
41	S 87°50'12" E	11.10
42	S 87°50'12" E	11.10
43	S 87°50'12" E	11.10
44	S 87°50'12" E	11.10
45	S 87°50'12" E	11.10
46	S 87°50'12" E	11.10
47	S 87°50'12" E	11.10
48	S 87°50'12" E	11.10
49	S 87°50'12" E	11.10
50	S 87°50'12" E	11.10
51	S 87°50'12" E	11.10
52	S 87°50'12" E	11.10
53	S 87°50'12" E	11.10
54	S 87°50'12" E	11.10
55	S 87°50'12" E	11.10
56	S 87°50'12" E	11.10
57	S 87°50'12" E	11.10
58	S 87°50'12" E	11.10
59	S 87°50'12" E	11.10
60	S 87°50'12" E	11.10
61	S 87°50'12" E	11.10
62	S 87°50'12" E	11.10
63	S 87°50'12" E	11.10
64	S 87°50'12" E	11.10
65	S 87°50'12" E	11.10
66	S 87°50'12" E	11.10
67	S 87°50'12" E	11.10
68	S 87°50'12" E	11.10
69	S 87°50'12" E	11.10
70	S 87°50'12" E	11.10
71	S 87°50'12" E	11.10
72	S 87°50'12" E	11.10
73	S 87°50'12" E	11.10
74	S 87°50'12" E	11.10
75	S 87°50'12" E	11.10
76	S 87°50'12" E	11.10
77	S 87°50'12" E	11.10
78	S 87°50'12" E	11.10
79	S 87°50'12" E	11.10
80	S 87°50'12" E	11.10
81	S 87°50'12" E	11.10
82	S 87°50'12" E	11.10
83	S 87°50'12" E	11.10
84	S 87°50'12" E	11.10
85	S 87°50'12" E	11.10

CURVE DATA

STATION	BEARING (D.M.S.)	CHORD BEARING (D.M.S.)	CHORD DISTANCE (FEET)	ARC DISTANCE (FEET)
0+00	S 89°53'19" W	S 89°53'19" W	11.10	11.10
0+10	S 87°50'12" E	S 87°50'12" E	11.10	11.10
0+20	S 87°50'12" E	S 87°50'12" E	11.10	11.10
0+30	S 87°50'12" E	S 87°50'12" E	11.10	11.10
0+40	S 87°50'12" E	S 87°50'12" E	11.10	11.10
0+50	S 87°50'12" E	S 87°50'12" E	11.10	11.10
0+60	S 87°50'12" E	S 87°50'12" E	11.10	11.10
0+70	S 87°50'12" E	S 87°50'12" E	11.10	11.10
0+80	S 87°50'12" E	S 87°50'12" E	11.10	11.10
0+90	S 87°50'12" E	S 87°50'12" E	11.10	11.10
1+00	S 87°50'12" E	S 87°50'12" E	11.10	11.10
1+10	S 87°50'12" E	S 87°50'12" E	11.10	11.10
1+20	S 87°50'12" E	S 87°50'12" E	11.10	11.10
1+30	S 87°50'12" E	S 87°50'12" E	11.10	11.10
1+40	S 87°50'12" E	S 87°50'12" E	11.10	11.10
1+50	S 87°50'12" E	S 87°50'12" E	11.10	11.10
1+60	S 87°50'12" E	S 87°50'12" E	11.10	11.10
1+70	S 87°50'12" E	S 87°50'12" E	11.10	11.10
1+80	S 87°50'12" E	S 87°50'12" E	11.10	11.10
1+90	S 87°50'12" E	S 87°50'12" E	11.10	11.10
2+00	S 87°50'12" E	S 87°50'12" E	11.10	11.10
2+10	S 87°50'12" E	S 87°50'12" E	11.10	11.10
2+20	S 87°50'12" E	S 87°50'12" E	11.10	11.10
2+30	S 87°50'12" E	S 87°50'12" E	11.10	11.10
2+40	S 87°50'12" E	S 87°50'12" E	11.10	11.10
2+50	S 87°50'12" E	S 87°50'12" E	11.10	11.10
2+60	S 87°50'12" E	S 87°50'12" E	11.10	11.10
2+70	S 87°50'12" E	S 87°50'12" E	11.10	11.10
2+80	S 87°50'12" E	S 87°50'12" E	11.10	11.10
2+90	S 87°50'12" E	S 87°50'12" E	11.10	11.10
3+00	S 87°50'12" E	S 87°50'12" E	11.10	11.10
3+10	S 87°50'12" E	S 87°50'12" E	11.10	11.10
3+20	S 87°50'12" E	S 87°50'12" E	11.10	11.10
3+30	S 87°50'12" E	S 87°50'12" E	11.10	11.10
3+40	S 87°50'12" E	S 87°50'12" E	11.10	11.10
3+50	S 87°50'12" E	S 87°50'12" E	11.10	11.10
3+60	S 87°50'12" E	S 87°50'12" E	11.10	11.10
3+70	S 87°50'12" E	S 87°50'12" E	11.10	11.10
3+80	S 87°50'12" E	S 87°50'12" E	11.10	11.10
3+90	S 87°50'12" E	S 87°50'12" E	11.10	11.10
4+00	S 87°50'12" E	S 87°50'12" E	11.10	11.10
4+10	S 87°50'12" E	S 87°50'12" E	11.10	11.10
4+20	S 87°50'12" E	S 87°50'12" E	11.10	11.10
4+30	S 87°50'12" E	S 87°50'12" E	11.10	11.10
4+40	S 87°50'12" E	S 87°50'12" E	11.10	11.10
4+50	S 87°50'12" E	S 87°50'12" E	11.10	11.10
4+60	S 87°50'12" E	S 87°50'12" E	11.10	11.10
4+70	S 87°50'12" E	S 87°50'12" E	11.10	11.10
4+80	S 87°50'12" E	S 87°50'12" E	11.10	11.10
4+90	S 87°50'12" E	S 87°50'12" E	11.10	11.10
5+00	S 87°50'12" E	S 87°50'12" E	11.10	11.10
5+10	S 87°50'12" E	S 87°50'12" E	11.10	11.10
5+20	S 87°50'12" E	S 87°50'12" E	11.10	11.10
5+30	S 87°50'12" E	S 87°50'12" E	11.10	11.10
5+40	S 87°50'12" E	S 87°50'12" E	11.10	11.10
5+50	S 87°50'12" E	S 87°50'12" E	11.10	11.10
5+60	S 87°50'12" E	S 87°50'12" E	11.10	11.10
5+70	S 87°50'12" E	S 87°50'12" E	11.10	11.10
5+80	S 87°50'12" E	S 87°50'12" E	11.10	11.10
5+90	S 87°50'12" E	S 87°50'12" E	11.10	11.10
6+00	S 87°50'12" E	S 87°50'12" E	11.10	11.10
6+10	S 87°50'12" E	S 87°50'12" E	11.10	11.10
6+20	S 87°50'12" E	S 87°50'12" E	11.10	11.10
6+30	S 87°50'12" E	S 87°50'12" E	11.10	11.10
6+40	S 87°50'12" E	S 87°50'12" E	11.10	11.10
6+50	S 87°50'12" E	S 87°50'12" E	11.10	11.10
6+60	S 87°50'12" E	S 87°50'12" E	11.10	11.10
6+70	S 87°50'12" E	S 87°50'12" E	11.10	11.10
6+80	S 87°50'12" E	S 87°50'12" E	11.10	11.10
6+90	S 87°50'12" E	S 87°50'12" E	11.10	11.10
7+00	S 87°50'12" E	S 87°50'12" E	11.10	11.10
7+10	S 87°50'12" E	S 87°50'12" E	11.10	11.10
7+20	S 87°50'12" E	S 87°50'12" E	11.10	11.10
7+30	S 87°50'12" E	S 87°50'12" E	11.10	11.10
7+40	S 87°50'12" E	S 87°50'12" E	11.10	11.10
7+50	S 87°50'12" E	S 87°50'12" E	11.10	11.10
7+60	S 87°50'12" E	S 87°50'12" E	11.10	11.10
7+70	S 87°50'12" E	S 87°50'12" E	11.10	11.10
7+80	S 87°50'12" E	S 87°50'12" E	11.10	11.10
7+90	S 87°50'12" E	S 87°50'12" E	11.10	11.10
8+00	S 87°50'12" E	S 87°50'12" E	11.10	11.10
8+10	S 87°50'12" E	S 87°50'12" E	11.10	11.10
8+20	S 87°50'12" E	S 87°50'12" E	11.10	11.10
8+30	S 87°50'12" E	S 87°50'12" E	11.10	11.10
8+40	S 87°50'12" E	S 87°50'12" E	11.10	11.10
8+50	S 87°50'12" E	S 87°50'12" E	11.10	11.10
8+60	S 87°50'12" E	S 87°50'12" E	11.10	11.10
8+70	S 87°50'12" E	S 87°50'12" E	11.10	11.10
8+80	S 87°50'12" E	S 87°50'12" E	11.10	11.10
8+90	S 87°50'12" E	S 87°50'12" E	11.10	11.10
9+00	S 87°50'12" E	S 87°50'12" E	11.10	11.10
9+10	S 87°50'12" E	S 87°50'12" E	11.10	11.10
9+20	S 87°50'12" E	S 87°50'12" E	11.10	11.10
9+30	S 87°50'12" E	S 87°50'12" E	11.10	11.10
9+40	S 87°50'12" E	S 87°50'12" E	11.10	11.10
9+50	S 87°50'12" E	S 87°50'12" E	11.10	11.10
9+60	S 87°50'12" E	S 87°50'12" E	11.10	11.10
9+70	S 87°50'12" E	S 87°50'12" E	11.10	11.10
9+80	S 87°50'12" E	S 87°50'12" E	11.10	11.10
9+90	S 87°50'12" E	S 87°50'12" E	11.10	11.10
10+00	S 87°50'12" E	S 87°50'12" E	11.10	11.10
10+10	S 87°50'12" E	S 87°50'12" E	11.10	11.10
10+20	S 87°50'12" E	S 87°50'12" E	11.10	11.10
10+30	S 87°50'12" E	S 87°50'12" E	11.10	11.10
10+40	S 87°50'12" E	S 87°50'12" E	11.10	11.10
10+50	S 87°50'12" E	S 87°50'12" E	11.10	11.10
10+60	S 87°50'12" E	S 87°50'12" E	11.10	11.10
10+70	S 87°50'12" E	S 87°50'12" E	11.10	11.10
10+80	S 87°50'12" E	S 87°50'12" E	11.10	11.10
10+90	S 87°50'12" E	S 87°50'12" E	11.10	11.10
11+00	S 87°50'12" E	S 87°50'12" E	11.10	11.10
11+10	S 87°50'12" E	S 87°50'12" E	11.10	11.10
11+20	S 87°50'12" E	S 87°50'12" E	11.10	11.10
11+30	S 87°50'12" E	S 87°50'12" E	11.10	11.10
11+4				