

**PLAT RECORDING SHEET**

**PLAT NAME:** Sienna Village of Destrehan, Section 2

**PLAT NO:** \_\_\_\_\_

**ACREAGE:** 34.696

**LEAGUE:** David Fitzgerald League

**ABSTRACT NUMBER:** 25

**NUMBER OF BLOCKS:** 4

**NUMBER OF LOTS:** 63

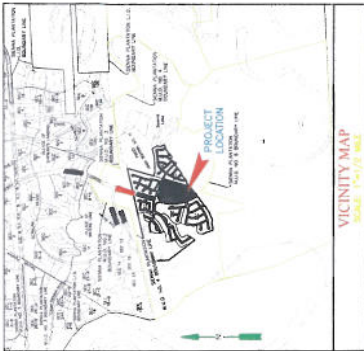
**NUMBER OF RESERVES:** 4

**OWNERS:** Toll-Gtis Property Owner, LLC

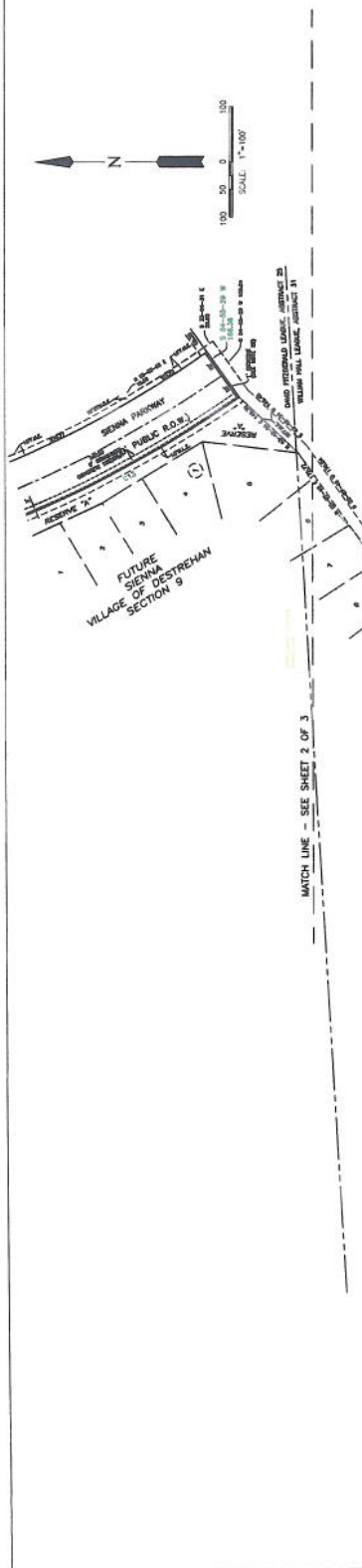
\_\_\_\_\_  
**(DEPUTY CLERK)**







VICINITY MAP  
SCALE 1"=1/2 MI.  
KEY MAP NO. 850-T



TOLL-GTIS PROPERTY OWNER, LLC  
CALLING 48.949 ACRES  
F.N. 20131373798  
F.B.C.O.P.R.

FUTURE  
SIENNA  
VILLAGE OF DESTREHAN  
SECTION 9

SIENNA PLANTATION  
DRAINAGE CHANNEL  
CALLING 48.949 ACRES  
CF NO. 9741281 F.B.C.O.P.R.

1ST-PRI SIENNA, L.P.  
CALLING 267.208 ACRES  
FILE NO. 2008021731  
F.B.C.O.P.R.

1. THE ENTIRE PLAT SHALL BE CONSIDERED AS A SUBDIVISION OF SECTION 02-104 OF THE CODE OF ORDINANCES OF THE CITY OF MEMPHIS, TENNESSEE.
2. THE ENTIRE PLAT SHALL BE CONSIDERED AS A SUBDIVISION OF SECTION 02-104 OF THE CODE OF ORDINANCES OF THE CITY OF MEMPHIS, TENNESSEE.
3. THE ENTIRE PLAT SHALL BE CONSIDERED AS A SUBDIVISION OF SECTION 02-104 OF THE CODE OF ORDINANCES OF THE CITY OF MEMPHIS, TENNESSEE.
4. THE ENTIRE PLAT SHALL BE CONSIDERED AS A SUBDIVISION OF SECTION 02-104 OF THE CODE OF ORDINANCES OF THE CITY OF MEMPHIS, TENNESSEE.
5. THE ENTIRE PLAT SHALL BE CONSIDERED AS A SUBDIVISION OF SECTION 02-104 OF THE CODE OF ORDINANCES OF THE CITY OF MEMPHIS, TENNESSEE.
6. THE ENTIRE PLAT SHALL BE CONSIDERED AS A SUBDIVISION OF SECTION 02-104 OF THE CODE OF ORDINANCES OF THE CITY OF MEMPHIS, TENNESSEE.
7. THE ENTIRE PLAT SHALL BE CONSIDERED AS A SUBDIVISION OF SECTION 02-104 OF THE CODE OF ORDINANCES OF THE CITY OF MEMPHIS, TENNESSEE.
8. THE ENTIRE PLAT SHALL BE CONSIDERED AS A SUBDIVISION OF SECTION 02-104 OF THE CODE OF ORDINANCES OF THE CITY OF MEMPHIS, TENNESSEE.
9. THE ENTIRE PLAT SHALL BE CONSIDERED AS A SUBDIVISION OF SECTION 02-104 OF THE CODE OF ORDINANCES OF THE CITY OF MEMPHIS, TENNESSEE.
10. THE ENTIRE PLAT SHALL BE CONSIDERED AS A SUBDIVISION OF SECTION 02-104 OF THE CODE OF ORDINANCES OF THE CITY OF MEMPHIS, TENNESSEE.
11. THE ENTIRE PLAT SHALL BE CONSIDERED AS A SUBDIVISION OF SECTION 02-104 OF THE CODE OF ORDINANCES OF THE CITY OF MEMPHIS, TENNESSEE.
12. THE ENTIRE PLAT SHALL BE CONSIDERED AS A SUBDIVISION OF SECTION 02-104 OF THE CODE OF ORDINANCES OF THE CITY OF MEMPHIS, TENNESSEE.
13. THE ENTIRE PLAT SHALL BE CONSIDERED AS A SUBDIVISION OF SECTION 02-104 OF THE CODE OF ORDINANCES OF THE CITY OF MEMPHIS, TENNESSEE.
14. THE ENTIRE PLAT SHALL BE CONSIDERED AS A SUBDIVISION OF SECTION 02-104 OF THE CODE OF ORDINANCES OF THE CITY OF MEMPHIS, TENNESSEE.
15. THE ENTIRE PLAT SHALL BE CONSIDERED AS A SUBDIVISION OF SECTION 02-104 OF THE CODE OF ORDINANCES OF THE CITY OF MEMPHIS, TENNESSEE.
16. THE ENTIRE PLAT SHALL BE CONSIDERED AS A SUBDIVISION OF SECTION 02-104 OF THE CODE OF ORDINANCES OF THE CITY OF MEMPHIS, TENNESSEE.
17. THE ENTIRE PLAT SHALL BE CONSIDERED AS A SUBDIVISION OF SECTION 02-104 OF THE CODE OF ORDINANCES OF THE CITY OF MEMPHIS, TENNESSEE.
18. THE ENTIRE PLAT SHALL BE CONSIDERED AS A SUBDIVISION OF SECTION 02-104 OF THE CODE OF ORDINANCES OF THE CITY OF MEMPHIS, TENNESSEE.
19. THE ENTIRE PLAT SHALL BE CONSIDERED AS A SUBDIVISION OF SECTION 02-104 OF THE CODE OF ORDINANCES OF THE CITY OF MEMPHIS, TENNESSEE.
20. THE ENTIRE PLAT SHALL BE CONSIDERED AS A SUBDIVISION OF SECTION 02-104 OF THE CODE OF ORDINANCES OF THE CITY OF MEMPHIS, TENNESSEE.
21. THE ENTIRE PLAT SHALL BE CONSIDERED AS A SUBDIVISION OF SECTION 02-104 OF THE CODE OF ORDINANCES OF THE CITY OF MEMPHIS, TENNESSEE.
22. THE ENTIRE PLAT SHALL BE CONSIDERED AS A SUBDIVISION OF SECTION 02-104 OF THE CODE OF ORDINANCES OF THE CITY OF MEMPHIS, TENNESSEE.

FINAL PLAT  
SIENNA  
VILLAGE OF DESTREHAN  
SECTION 2  
A SUBDIVISION OF 34.688 ACRES OF LAND SITUATED IN  
THE EAST PART OF SECTION 02, TOWNSHIP 17 N.,  
RANGE 07 E., COUNTY OF FORT BEND COUNTY, TEXAS.

NOVEMBER 19, 2014  
83 LOTS 4 BLOCKS  
JOB NO. 1414-10029-308  
TOLL-GTIS PROPERTY OWNER, LLC  
PH. (281) 884-8655

10110 WEST SAN HOUSTON PARKWAY NORTH, SUITE 300, HOUSTON, TEXAS 77054  
ENGINEER:  
LJA Engineering, Inc.  
10110 West San Houston Parkway North, Suite 300  
Houston, Texas 77054  
PH. (281) 884-8655  
FAX (281) 884-8655

307th St. SW, Suite 200  
Brentwood, TN 37027  
PH. (615) 875-1100  
FAX (615) 875-1100