

PLAT RECORDING SHEET

PLAT NAME: Braman Business Park

PLAT NO: _____

ACREAGE: 3.9847

LEAGUE: Knight and White League

ABSTRACT NUMBER: 46

NUMBER OF BLOCKS: 1

NUMBER OF LOTS: 0

NUMBER OF RESERVES: 1

OWNERS: Braman Properties SM LLC.

(DEPUTY CLERK)



VICINITY MAP
SCALE: 1" = 1.000' NET MAP SHEET

APPROVED BY THE COMMISSIONER, COURT OF FORT BEND COUNTY, TEXAS, THIS DAY OF OCTOBER, 2014.

ROBERT W. STANLEY, P.E.
FORT BEND COUNTY ENGINEER

APPROVED BY THE COMMISSIONER, COURT OF FORT BEND COUNTY, TEXAS, THIS DAY OF OCTOBER, 2014.

FRANCIS I. COUNTY COMMISSIONER

APPROVED BY THE COMMISSIONER, COURT OF FORT BEND COUNTY, TEXAS, THIS DAY OF OCTOBER, 2014.

FRANCIS I. COUNTY COMMISSIONER

APPROVED BY THE COMMISSIONER, COURT OF FORT BEND COUNTY, TEXAS, THIS DAY OF OCTOBER, 2014.

FRANCIS I. COUNTY COMMISSIONER

STATE OF TEXAS
COUNTY OF FORT BEND

FRANK BROOKMAN, PRESIDENT

THIS DEED OF GRANT, MADE THIS 23RD DAY OF OCTOBER, 2014, BY THE CITY OF FORT BEND COUNTY, TEXAS, TO THE CITY OF FORT BEND COUNTY, TEXAS, FOR THE PURPOSE OF CONVEYING TO THE CITY OF FORT BEND COUNTY, TEXAS, THE UNRESTRICTED RESERVE A, 3.9847 ACRES OR 173,572 SQUARE FEET OF LAND SITUATED IN THE KNIGHT AND WHITE LEAGUE ABSTRACT NO. 46, FORT BEND COUNTY, TEXAS, AND BEING OUT OF A CALLED 103.97 ACRE TRACT TO PARK CREEK 359, L.P., AS RECORDED IN FORT BEND COUNTY CLERK FILE (F.B.C.C.F.) NO. 2007151785.

BY: FRANK BROOKMAN, PRESIDENT

ATTEST: LARRY SCARLETT, CITY SECRETARY

THIS DEED OF GRANT, MADE THIS 23RD DAY OF OCTOBER, 2014, BY THE CITY OF FORT BEND COUNTY, TEXAS, TO THE CITY OF FORT BEND COUNTY, TEXAS, FOR THE PURPOSE OF CONVEYING TO THE CITY OF FORT BEND COUNTY, TEXAS, THE UNRESTRICTED RESERVE A, 3.9847 ACRES OR 173,572 SQUARE FEET OF LAND SITUATED IN THE KNIGHT AND WHITE LEAGUE ABSTRACT NO. 46, FORT BEND COUNTY, TEXAS, AND BEING OUT OF A CALLED 103.97 ACRE TRACT TO PARK CREEK 359, L.P., AS RECORDED IN FORT BEND COUNTY CLERK FILE (F.B.C.C.F.) NO. 2007151785.

STATE OF TEXAS
COUNTY OF FORT BEND

FRANK BROOKMAN, PRESIDENT

THIS DEED OF GRANT, MADE THIS 23RD DAY OF OCTOBER, 2014, BY THE CITY OF FORT BEND COUNTY, TEXAS, TO THE CITY OF FORT BEND COUNTY, TEXAS, FOR THE PURPOSE OF CONVEYING TO THE CITY OF FORT BEND COUNTY, TEXAS, THE UNRESTRICTED RESERVE A, 3.9847 ACRES OR 173,572 SQUARE FEET OF LAND SITUATED IN THE KNIGHT AND WHITE LEAGUE ABSTRACT NO. 46, FORT BEND COUNTY, TEXAS, AND BEING OUT OF A CALLED 103.97 ACRE TRACT TO PARK CREEK 359, L.P., AS RECORDED IN FORT BEND COUNTY CLERK FILE (F.B.C.C.F.) NO. 2007151785.

BY: FRANK BROOKMAN, PRESIDENT

ATTEST: LARRY SCARLETT, CITY SECRETARY

STATE OF TEXAS
COUNTY OF FORT BEND

FRANK BROOKMAN, PRESIDENT

THIS DEED OF GRANT, MADE THIS 23RD DAY OF OCTOBER, 2014, BY THE CITY OF FORT BEND COUNTY, TEXAS, TO THE CITY OF FORT BEND COUNTY, TEXAS, FOR THE PURPOSE OF CONVEYING TO THE CITY OF FORT BEND COUNTY, TEXAS, THE UNRESTRICTED RESERVE A, 3.9847 ACRES OR 173,572 SQUARE FEET OF LAND SITUATED IN THE KNIGHT AND WHITE LEAGUE ABSTRACT NO. 46, FORT BEND COUNTY, TEXAS, AND BEING OUT OF A CALLED 103.97 ACRE TRACT TO PARK CREEK 359, L.P., AS RECORDED IN FORT BEND COUNTY CLERK FILE (F.B.C.C.F.) NO. 2007151785.

BY: FRANK BROOKMAN, PRESIDENT

ATTEST: LARRY SCARLETT, CITY SECRETARY

ENCUMBRANCE CERTIFICATE

I, FRANK BROOKMAN, PRESIDENT OF THE CITY OF FORT BEND COUNTY, TEXAS, DO HEREBY CERTIFY THAT THE UNRESTRICTED RESERVE A, 3.9847 ACRES OR 173,572 SQUARE FEET OF LAND SITUATED IN THE KNIGHT AND WHITE LEAGUE ABSTRACT NO. 46, FORT BEND COUNTY, TEXAS, AND BEING OUT OF A CALLED 103.97 ACRE TRACT TO PARK CREEK 359, L.P., AS RECORDED IN FORT BEND COUNTY CLERK FILE (F.B.C.C.F.) NO. 2007151785, IS UNRESTRICTED AND FREE OF ALL ENCUMBRANCES, EXCEPT AS SHOWN ON THE PLAT HEREIN.

FRANK BROOKMAN, PRESIDENT
CITY OF FORT BEND COUNTY, TEXAS

ENCUMBRANCE CERTIFICATE

I, FRANK BROOKMAN, PRESIDENT OF THE CITY OF FORT BEND COUNTY, TEXAS, DO HEREBY CERTIFY THAT THE UNRESTRICTED RESERVE A, 3.9847 ACRES OR 173,572 SQUARE FEET OF LAND SITUATED IN THE KNIGHT AND WHITE LEAGUE ABSTRACT NO. 46, FORT BEND COUNTY, TEXAS, AND BEING OUT OF A CALLED 103.97 ACRE TRACT TO PARK CREEK 359, L.P., AS RECORDED IN FORT BEND COUNTY CLERK FILE (F.B.C.C.F.) NO. 2007151785, IS UNRESTRICTED AND FREE OF ALL ENCUMBRANCES, EXCEPT AS SHOWN ON THE PLAT HEREIN.

FRANK BROOKMAN, PRESIDENT
CITY OF FORT BEND COUNTY, TEXAS

BRAMAN BUSINESS PARK

A TRACT OF PARCEL CONTAINING 3,9847 ACRES OR 173,572 SQUARE FEET OF LAND SITUATED IN THE KNIGHT AND WHITE LEAGUE ABSTRACT NO. 46, FORT BEND COUNTY, TEXAS AND BEING OUT OF A CALLED 103.97 ACRE TRACT TO PARK CREEK 359, L.P., AS RECORDED IN FORT BEND COUNTY CLERK FILE (F.B.C.C.F.) NO. 2007151785.

REASON FOR PLAT: TO CREATE AN UNRESTRICTED RESERVE

RESERVES: 1 BLOCK: 1 LOTS: 0

OCTOBER, 2014

THE INTERMED GROUP, LLC
ENGINEERS, PROJECT & CONSTRUCTION MANAGERS
401 STANWOOD, SUITE 300
HOUSTON, TEXAS 77007
TEL: (713) 790-0099
FAX: (713) 790-8550
(INTERFILED PROJ. # 14044.00)

BRAMAN BUSINESS PARK

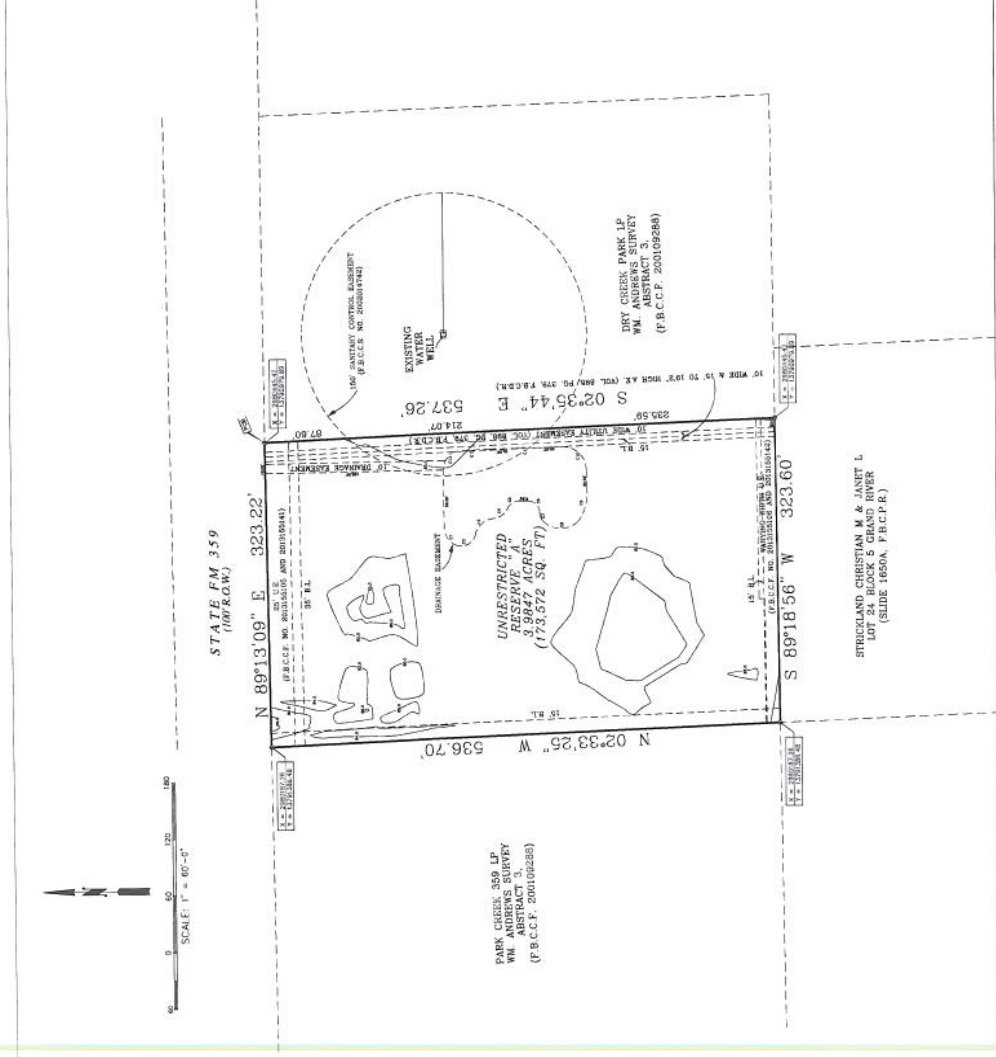
A TRACT OF PARCEL CONTAINING 3,9847 ACRES OR 173,572 SQUARE FEET OF LAND SITUATED IN THE KNIGHT AND WHITE LEAGUE ABSTRACT NO. 46, FORT BEND COUNTY, TEXAS AND BEING OUT OF A CALLED 103.97 ACRE TRACT TO PARK CREEK 359, L.P., AS RECORDED IN FORT BEND COUNTY CLERK FILE (F.B.C.C.F.) NO. 2007151785.

REASON FOR PLAT: TO CREATE AN UNRESTRICTED RESERVE

RESERVES: 1 BLOCK: 1 LOTS: 0

OCTOBER, 2014

THE INTERMED GROUP, LLC
ENGINEERS, PROJECT & CONSTRUCTION MANAGERS
401 STANWOOD, SUITE 300
HOUSTON, TEXAS 77007
TEL: (713) 790-0099
FAX: (713) 790-8550
(INTERFILED PROJ. # 14044.00)



PLAT NOTES:

- THESE ARE NO ENCUMBRANCES OR OTHER CLAIMS WITHIN THE BOUNDARIES OF THIS PLAT.
- THE TRACT IS SUBJECT TO THE UNRESTRICTED RESERVE A, 3.9847 ACRES OR 173,572 SQUARE FEET OF LAND SITUATED IN THE KNIGHT AND WHITE LEAGUE ABSTRACT NO. 46, FORT BEND COUNTY, TEXAS, AND BEING OUT OF A CALLED 103.97 ACRE TRACT TO PARK CREEK 359, L.P., AS RECORDED IN FORT BEND COUNTY CLERK FILE (F.B.C.C.F.) NO. 2007151785.
- ALL UTILITIES, INCLUDING BUT NOT LIMITED TO, WATER, GAS, AND SEWER, ARE SHOWN ON THE PLAT AND ARE TO REMAIN THE PROPERTY OF THE CITY OF FORT BEND COUNTY, TEXAS.
- THE PLAT IS SUBJECT TO THE UNRESTRICTED RESERVE A, 3.9847 ACRES OR 173,572 SQUARE FEET OF LAND SITUATED IN THE KNIGHT AND WHITE LEAGUE ABSTRACT NO. 46, FORT BEND COUNTY, TEXAS, AND BEING OUT OF A CALLED 103.97 ACRE TRACT TO PARK CREEK 359, L.P., AS RECORDED IN FORT BEND COUNTY CLERK FILE (F.B.C.C.F.) NO. 2007151785.
- THE PLAT IS SUBJECT TO THE UNRESTRICTED RESERVE A, 3.9847 ACRES OR 173,572 SQUARE FEET OF LAND SITUATED IN THE KNIGHT AND WHITE LEAGUE ABSTRACT NO. 46, FORT BEND COUNTY, TEXAS, AND BEING OUT OF A CALLED 103.97 ACRE TRACT TO PARK CREEK 359, L.P., AS RECORDED IN FORT BEND COUNTY CLERK FILE (F.B.C.C.F.) NO. 2007151785.
- THE PLAT IS SUBJECT TO THE UNRESTRICTED RESERVE A, 3.9847 ACRES OR 173,572 SQUARE FEET OF LAND SITUATED IN THE KNIGHT AND WHITE LEAGUE ABSTRACT NO. 46, FORT BEND COUNTY, TEXAS, AND BEING OUT OF A CALLED 103.97 ACRE TRACT TO PARK CREEK 359, L.P., AS RECORDED IN FORT BEND COUNTY CLERK FILE (F.B.C.C.F.) NO. 2007151785.
- THE PLAT IS SUBJECT TO THE UNRESTRICTED RESERVE A, 3.9847 ACRES OR 173,572 SQUARE FEET OF LAND SITUATED IN THE KNIGHT AND WHITE LEAGUE ABSTRACT NO. 46, FORT BEND COUNTY, TEXAS, AND BEING OUT OF A CALLED 103.97 ACRE TRACT TO PARK CREEK 359, L.P., AS RECORDED IN FORT BEND COUNTY CLERK FILE (F.B.C.C.F.) NO. 2007151785.
- THE PLAT IS SUBJECT TO THE UNRESTRICTED RESERVE A, 3.9847 ACRES OR 173,572 SQUARE FEET OF LAND SITUATED IN THE KNIGHT AND WHITE LEAGUE ABSTRACT NO. 46, FORT BEND COUNTY, TEXAS, AND BEING OUT OF A CALLED 103.97 ACRE TRACT TO PARK CREEK 359, L.P., AS RECORDED IN FORT BEND COUNTY CLERK FILE (F.B.C.C.F.) NO. 2007151785.
- THE PLAT IS SUBJECT TO THE UNRESTRICTED RESERVE A, 3.9847 ACRES OR 173,572 SQUARE FEET OF LAND SITUATED IN THE KNIGHT AND WHITE LEAGUE ABSTRACT NO. 46, FORT BEND COUNTY, TEXAS, AND BEING OUT OF A CALLED 103.97 ACRE TRACT TO PARK CREEK 359, L.P., AS RECORDED IN FORT BEND COUNTY CLERK FILE (F.B.C.C.F.) NO. 2007151785.
- THE PLAT IS SUBJECT TO THE UNRESTRICTED RESERVE A, 3.9847 ACRES OR 173,572 SQUARE FEET OF LAND SITUATED IN THE KNIGHT AND WHITE LEAGUE ABSTRACT NO. 46, FORT BEND COUNTY, TEXAS, AND BEING OUT OF A CALLED 103.97 ACRE TRACT TO PARK CREEK 359, L.P., AS RECORDED IN FORT BEND COUNTY CLERK FILE (F.B.C.C.F.) NO. 2007151785.

LEGEND:

NO.	DESCRIPTION	DELTA	ARC	TANGENT	BEARING	CHORD
1	1/4" = 80'					
2	1/4" = 80'					
3	1/4" = 80'					
4	1/4" = 80'					
5	1/4" = 80'					
6	1/4" = 80'					
7	1/4" = 80'					
8	1/4" = 80'					
9	1/4" = 80'					
10	1/4" = 80'					
11	1/4" = 80'					
12	1/4" = 80'					
13	1/4" = 80'					
14	1/4" = 80'					
15	1/4" = 80'					
16	1/4" = 80'					
17	1/4" = 80'					
18	1/4" = 80'					
19	1/4" = 80'					
20	1/4" = 80'					
21	1/4" = 80'					
22	1/4" = 80'					
23	1/4" = 80'					
24	1/4" = 80'					
25	1/4" = 80'					
26	1/4" = 80'					
27	1/4" = 80'					
28	1/4" = 80'					
29	1/4" = 80'					
30	1/4" = 80'					
31	1/4" = 80'					
32	1/4" = 80'					
33	1/4" = 80'					
34	1/4" = 80'					
35	1/4" = 80'					
36	1/4" = 80'					
37	1/4" = 80'					
38	1/4" = 80'					
39	1/4" = 80'					
40	1/4" = 80'					
41	1/4" = 80'					
42	1/4" = 80'					
43	1/4" = 80'					
44	1/4" = 80'					
45	1/4" = 80'					
46	1/4" = 80'					
47	1/4" = 80'					
48	1/4" = 80'					
49	1/4" = 80'					
50	1/4" = 80'					
51	1/4" = 80'					
52	1/4" = 80'					
53	1/4" = 80'					
54	1/4" = 80'					
55	1/4" = 80'					
56	1/4" = 80'					
57	1/4" = 80'					
58	1/4" = 80'					
59	1/4" = 80'					
60	1/4" = 80'					
61	1/4" = 80'					
62	1/4" = 80'					
63	1/4" = 80'					
64	1/4" = 80'					
65	1/4" = 80'					
66	1/4" = 80'					
67	1/4" = 80'					
68	1/4" = 80'					
69	1/4" = 80'					
70	1/4" = 80'					
71	1/4" = 80'					
72	1/4" = 80'					
73	1/4" = 80'					
74	1/4" = 80'					
75	1/4" = 80'					
76	1/4" = 80'					
77	1/4" = 80'					
78	1/4" = 80'					
79	1/4" = 80'					
80	1/4" = 80'					
81	1/4" = 80'					
82	1/4" = 80'					
83	1/4" = 80'					
84	1/4" = 80'					
85	1/4" = 80'					
86	1/4" = 80'					
87	1/4" = 80'					
88	1/4" = 80'					
89	1/4" = 80'					
90	1/4" = 80'					
91	1/4" = 80'					
92	1/4" = 80'					
93	1/4" = 80'					
94	1/4" = 80'					
95	1/4" = 80'					
96	1/4" = 80'					
97	1/4" = 80'					
98	1/4" = 80'					
99	1/4" = 80'					
100	1/4" = 80'					