



Fort Bend County Engineering
FORT BEND COUNTY, TEXAS

Richard W. Stolleis, P.E.
County Engineer

August 12, 2014

Commissioner W. A. "Andy" Meyers
Fort Bend County Precinct 3
22333 Grand Corner Drive
Katy, Texas 77494

**RE: Pine Mill Ranch Drive Reserve No. 1 - Traffic Control Plan
Pine Mill Ranch Drive Reserve No. 2**

Dear Commissioner:

Fort Bend County Engineering has completed and recommends approval of the traffic control plans for the above referenced subdivisions. The public hearing date for acceptance of the plans is being scheduled.

A copy of the traffic control plans are attached for your review. If you should have any questions, please give me a call.

Sincerely,

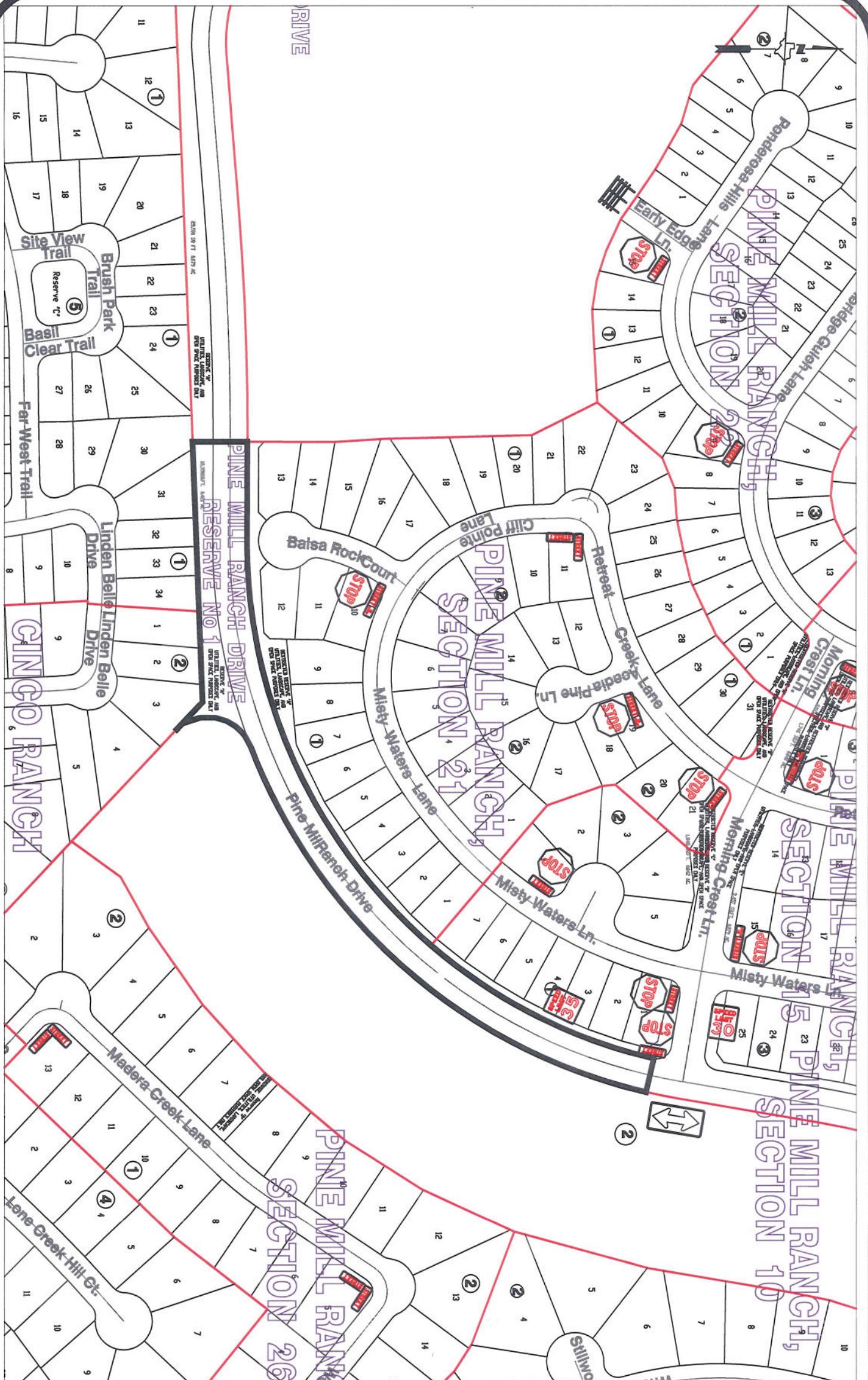
Steven L. Evans
Construction Coordinator

SLE/mjs

cc: Judge Robert E. Hebert, County Judge
Marc Grant - FBC Road & Bridge
Marc Grant - Signage Department
File

|Office| 1124 Blume Road | Rosenberg, TX 77471 * |Mailing| 301 Jackson St. | Richmond, TX 77469
Phone 281-633-7500 * Fax 281-633-7545

I:\WPDATA\LETTERS\TRAFSTUD\111740814_t02.docx



Note:

The purpose of this traffic control plan is to establish traffic control for Pine Mill Ranch Drive Reserve No. 1.

Drawn By: L. Brdecka

Date: 8-12-14

Approved By: Clay Forister, PE *CAF*

Date: 13 AUG 14

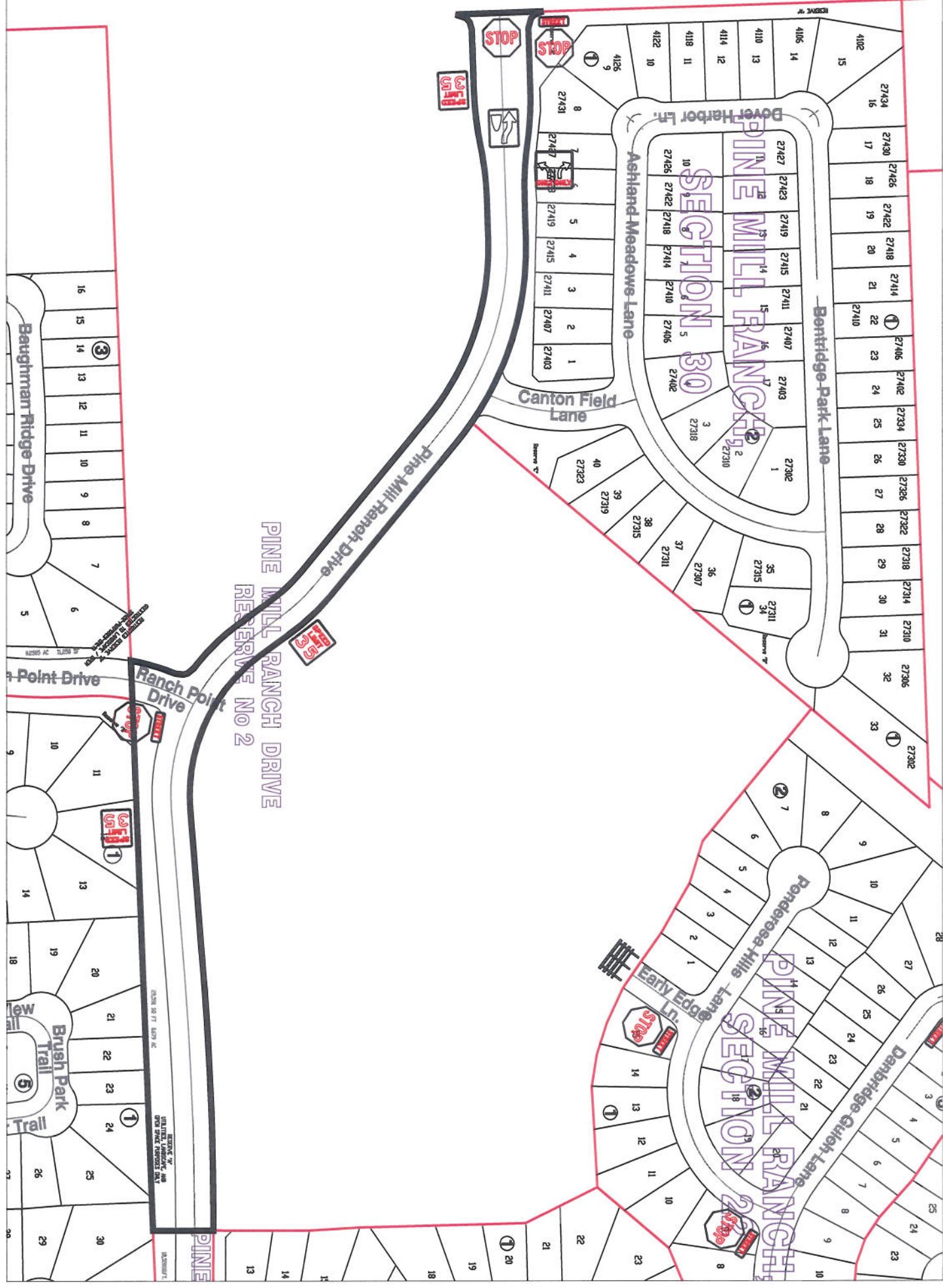
Scale

1" = 200'-0"

**Pine Mill Ranch Drive
Reserve No. 1
Control Map and Traffic
Sign Layout**

Fort Bend County Engineering Dept.
1124 Blume Road
Rosenberg, Texas 77471

F.M. 1463



Note:

The purpose of this traffic control plan is to establish traffic control for Pine Mill Ranch Drive Reserve No. 2.

Drawn By: L. Brdecka

Date: 8-12-14

Approved By: Clay Forster, PE

Date: 13 AUG 14

Scale

1" = 200'-0"

**Pine Mill Ranch Drive
Reserve No. 2
Control Map and Traffic
Sign Layout**

Fort Bend County Engineering Dept.
1124 Blume Road
Rosenberg, Texas 77471