



## FORT BEND COUNTY ENGINEERING

Fort Bend County, Texas

Richard W. Stolleis, P.E.  
County Engineer

May 19, 2014

Commissioner W. A. "Andy" Meyers  
Fort Bend County Precinct 3  
22333 Grand Corner Drive  
Katy, Texas 77494

**RE: Pine Mill Ranch, Section 25 - Traffic Control Plan**  
**Pine Mill Ranch, Section 26**

Dear Commissioner:

Fort Bend County Engineering has completed and recommends approval of the traffic control plans for the above referenced subdivisions. The public hearing date for acceptance of the plans is being scheduled.

A copy of the traffic control plans are attached for your review. If you should have any questions, please give me a call.

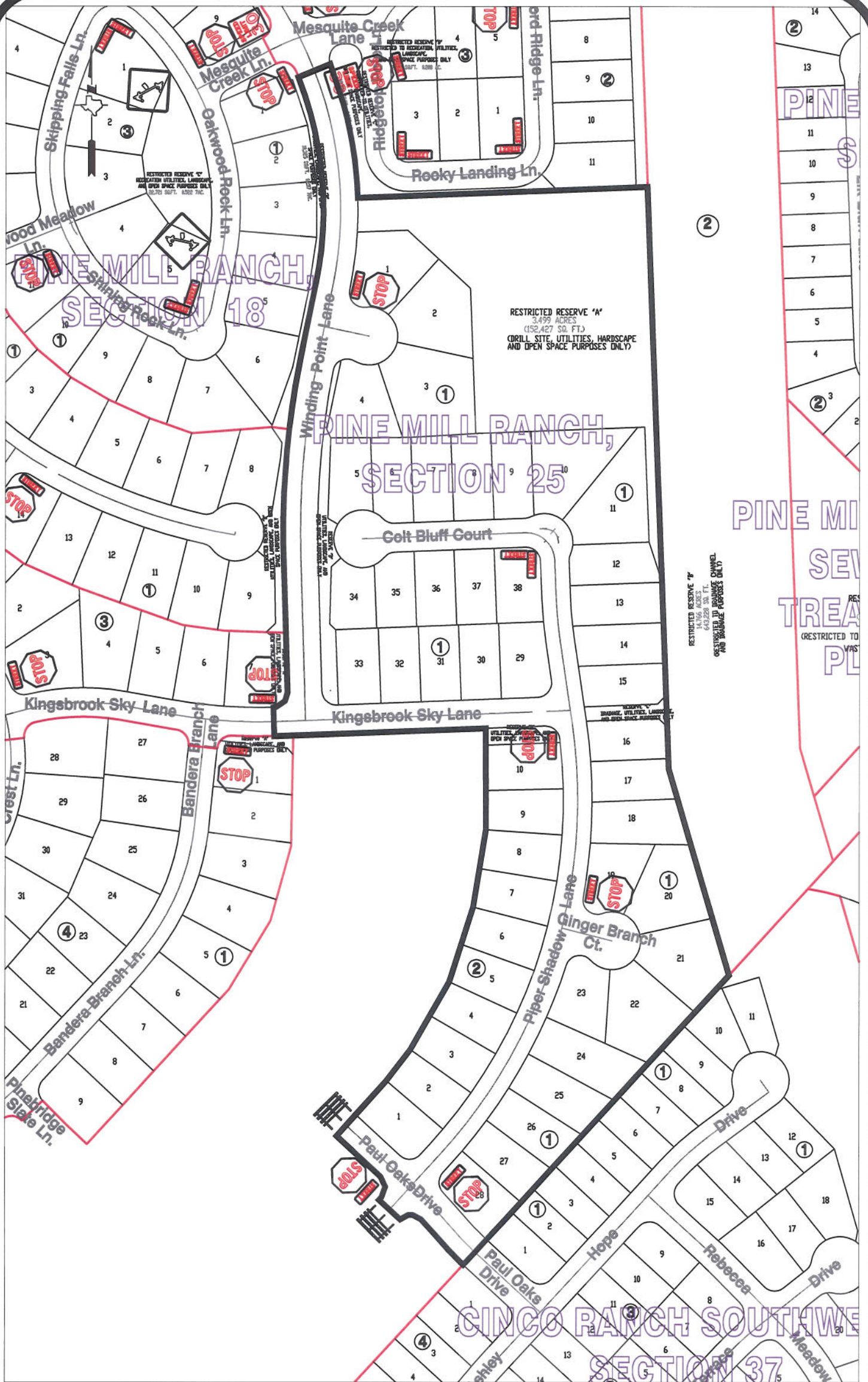
Sincerely,

A handwritten signature in cursive script that reads "Steven L. Evans".

Steven L. Evans  
Construction Coordinator

SLE/mjs

cc: Judge Robert E. Hebert, County Judge  
Marc Grant - FBC Road & Bridge  
Marc Grant - Signage Department  
File



**Note:**

The purpose of this traffic control plan is to establish traffic control for Pine Mill Ranch, Section 25.

Drawn By: L. Brdecka

Date: 2-26-14

Approved By: Rick Stagle, PE, PTOE

Date: 2-26-14

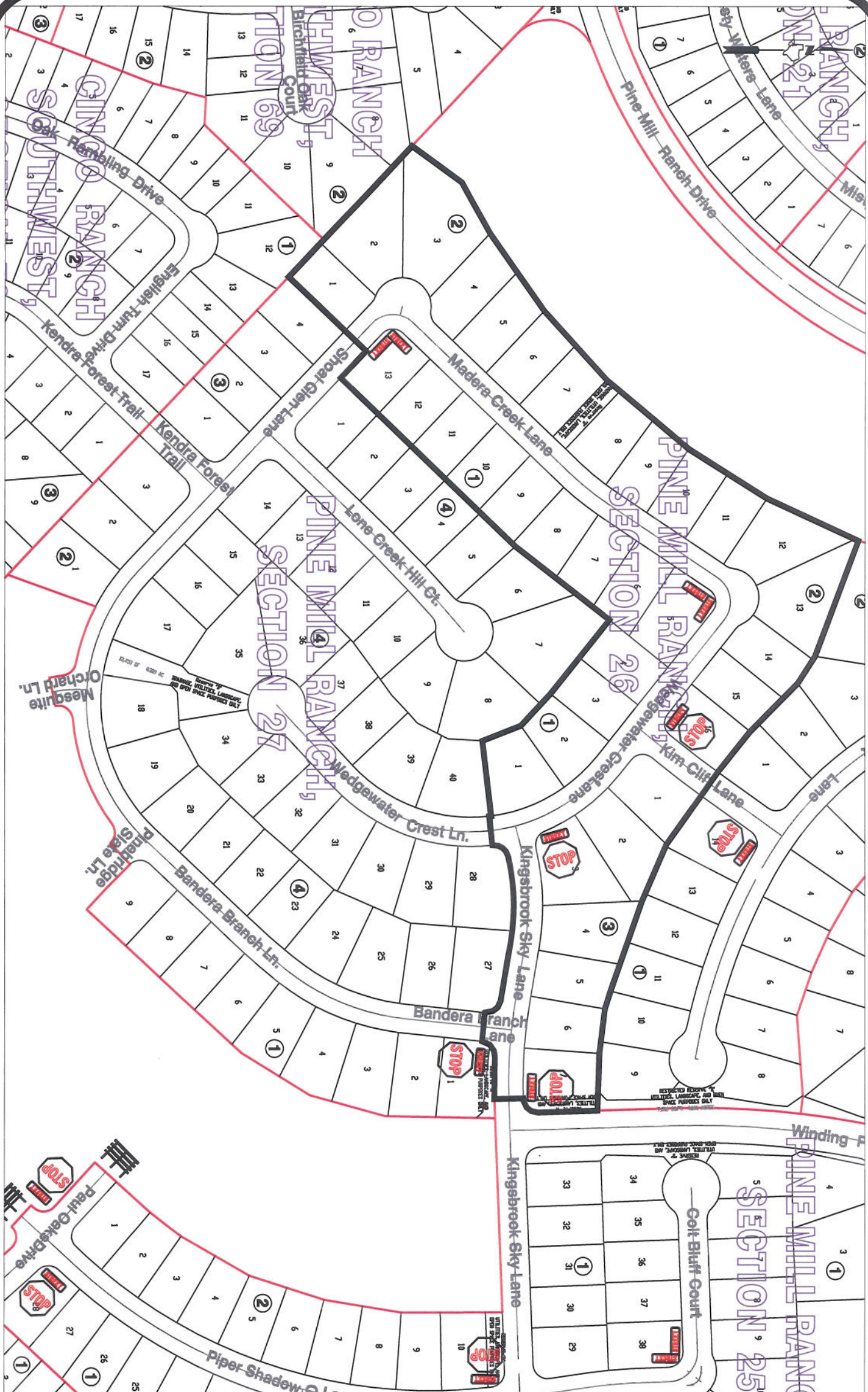
Scale

1" = 200'-0"

**Pine Mill Ranch, Section 25  
Control Map and Traffic  
Sign Layout**

Fort Bend County Engineering Dept.  
1124 Blume Road  
Rosenberg, Texas 77471





**Note:**

The purpose of this traffic control plan is to establish traffic control for Pine Mill Ranch, Section 26.

Drawn By: L. Brdecka

Date: 2-26-14

Approved By: Rick Stalgie, PE, PTOE

Date: 2-26-14

Scale

1" = 200'-0"

**Pine Mill Ranch, Section 26  
Control Map and Traffic  
Sign Layout**

Fort Bend County Engineering Dept.  
1124 Blume Road  
Rosenberg, Texas 77471