

## FORT BEND COUNTY ENGINEERING

Fort Bend County, Texas

Richard W. Stolleis, P.E.  
County Engineer

May 19, 2014

Commissioner Richard Morrison  
Fort Bend County Precinct 1  
1517 Eugene Heimann Circle, Suite 300  
Richmond, Texas 77469

**RE: Del Webb-Richmond, Section 3 - Traffic Control Plan**  
**Del Webb-Richmond, Section 4**  
**Del Webb-Richmond, Section 5**  
**Del Webb-Richmond, Section 5B**  
**Del Webb-Richmond, Section 18A**  
**Del Webb-Richmond, Section 18B**

Dear Commissioner:

Fort Bend County Engineering has completed and recommends approval of the traffic control plans for the above referenced subdivisions. The public hearing date for acceptance of the plans is being scheduled.

A copy of the traffic control plans are attached for your review. If you should have any questions, please give me a call.

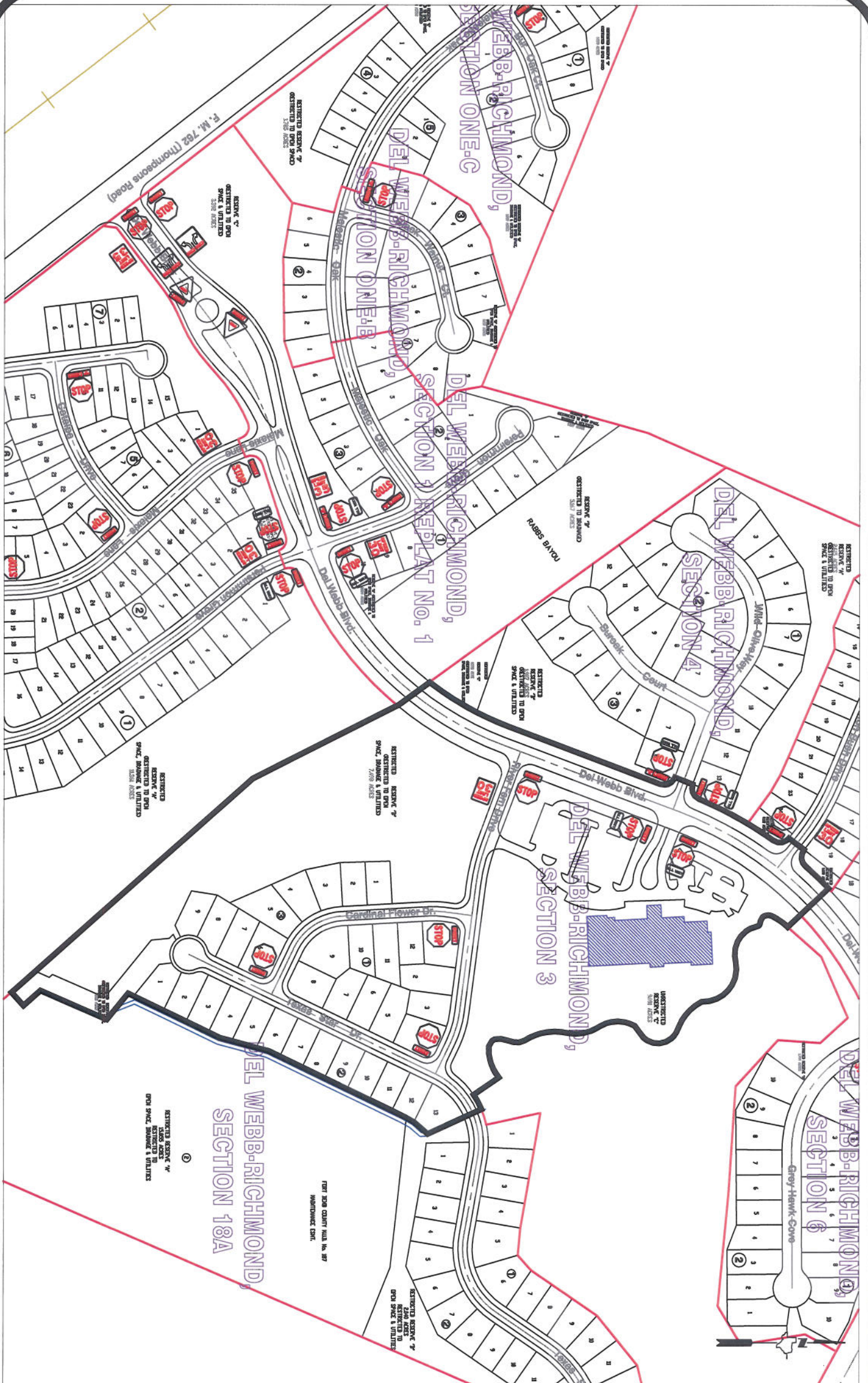
Sincerely,

A handwritten signature in black ink, reading "Steven L. Evans".

Steven L. Evans  
Construction Coordinator

SLE/mjs

cc: Judge Robert E. Hebert, County Judge  
Marc Grant - FBC Road & Bridge  
Marc Grant - Signage Department  
File



**Note:**

The purpose of this traffic control plan is to establish traffic control for Del Webb - Richmond, Section 3.

Drawn By: L. Brdecka

Date: 4-9-14

Approved By: Clay Forister, PE

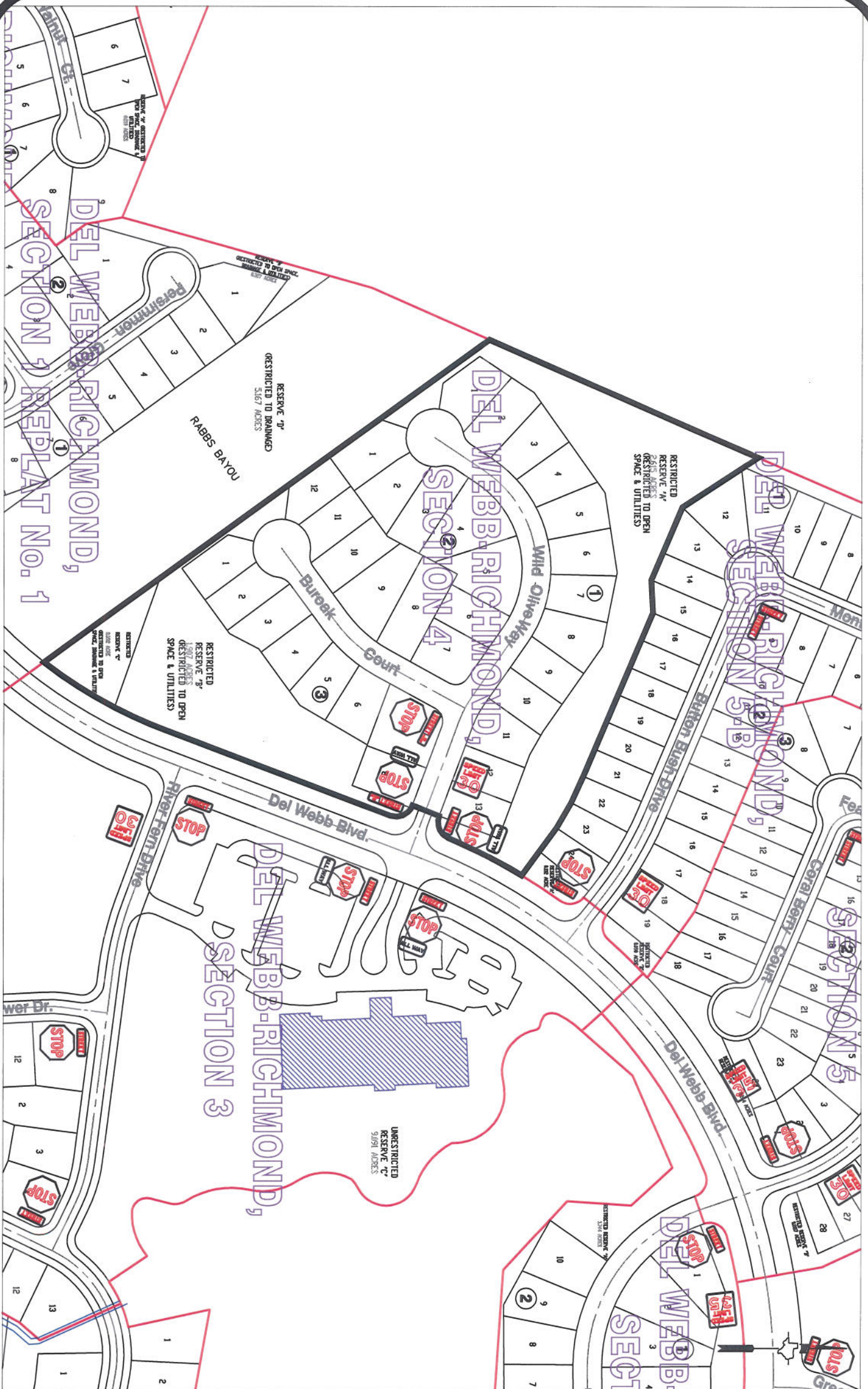
Date: 01MAY14

Scale

1" = 300'-0"

**Del Webb - Richmond, Section 3  
Control Map and  
Traffic Sign Layout**

Fort Bend County Engineering Dept.  
1124 Blume Road  
Rosenberg, Texas 77471



**Note:**

The purpose of this traffic control plan is to establish traffic control for Del Webb - Richmond, Section 4.

Drawn By: L. Brdecka

Date: 4-8-14

Approved By: Clay Forister, PE

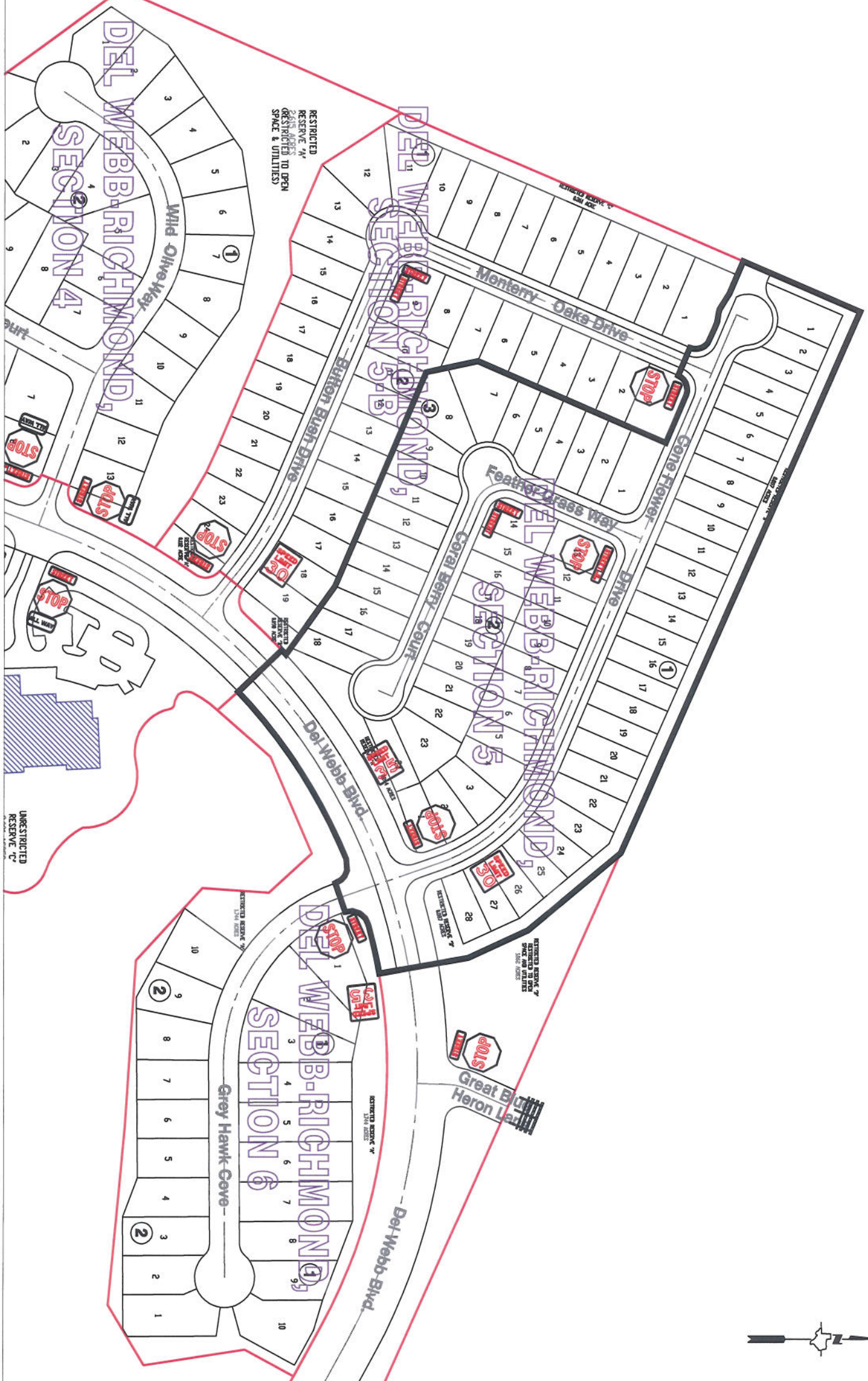
Date: 01MAY14

Scale

1" = 200'-0"

**Del Webb - Richmond, Section 4  
Control Map and  
Traffic Sign Layout**

Fort Bend County Engineering Dept.  
1124 Blume Road  
Rosenberg, Texas 77471



**Note:**

The purpose of this traffic control plan is to establish traffic control for Del Webb - Richmond, Section 5.

Drawn By: L. Brdecka

Date: 3-31-14

Approved By: Rick Staigle, PE, PTOE

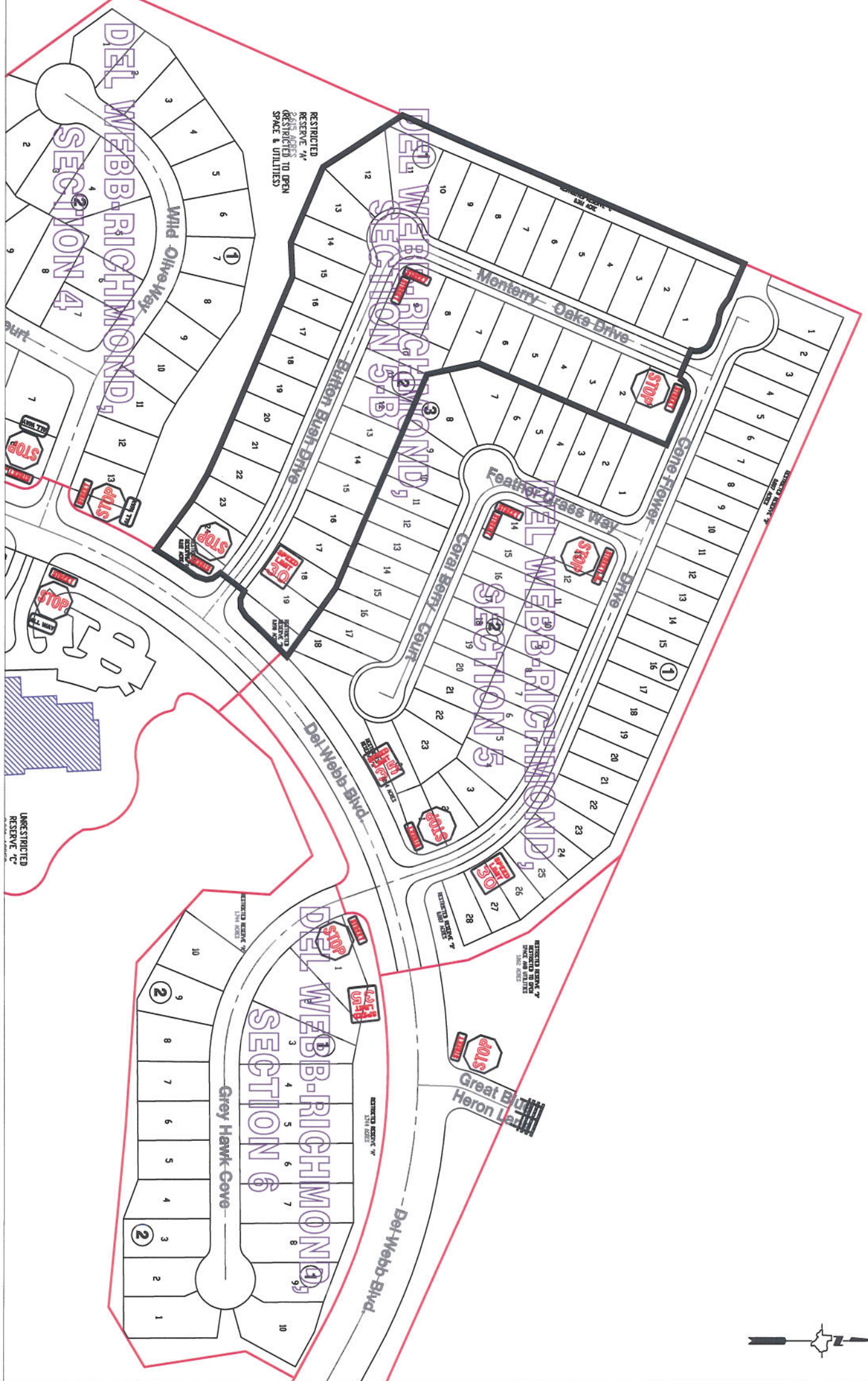
Date: *RS*

Scale

1" = 200'-0"

**Del Webb - Richmond, Section 5  
Control Map and  
Traffic Sign Layout**

Fort Bend County Engineering Dept.  
1124 Blume Road  
Rosenberg, Texas 77471



**Note:**

The purpose of this traffic control plan is to establish traffic control for Del Webb - Richmond, Section 5B.

Drawn By: L. Brdecka

Date: 3-31-14

Approved By: Rick Stalgie, PE, PTOE

Date: *RS*

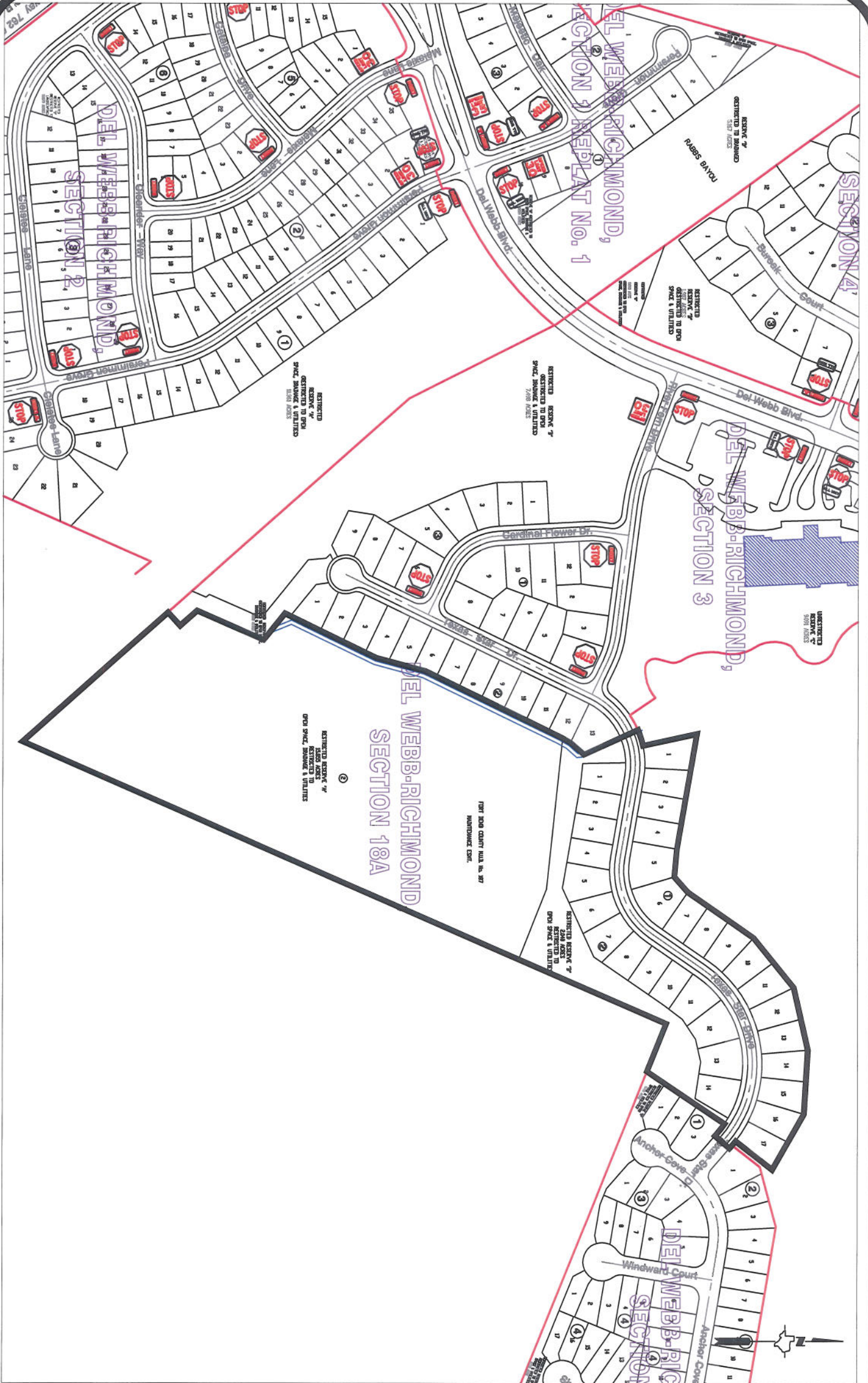
Scale

1" = 200'-0"

**Del Webb - Richmond, Section 5B**

**Control Map and  
Traffic Sign Layout**

Fort Bend County Engineering Dept.  
1124 Blume Road  
Rosenberg, Texas 77471



**Note:**

The purpose of this traffic control plan is to establish traffic control for Del Webb - Richmond, Section 18-A.

Drawn By: L. Brdecka

Date: 4-9-14

Approved By: Clay Forster, PE

Date: 01MAY14

Scale

1" = 300'-0"

**Del Webb - Richmond, Section 18-A  
Control Map and  
Traffic Sign Layout**

Fort Bend County Engineering Dept.  
1124 Blume Road  
Rosenberg, Texas 77471

