



FORT BEND COUNTY ENGINEERING

Fort Bend County, Texas

Richard W. Stolleis, P.E.
County Engineer

March 7, 2014

Commissioner W. A. "Andy" Meyers
Fort Bend County Precinct 3
22333 Grand Corner Drive
Katy, Texas 77494

RE: Pine Mill Ranch, Section 15 - Traffic Control Plan
Pine Mill Ranch, Section 16
Pine Mill Ranch, Section 17
Pine Mill Ranch, Section 18
Pine Mill Ranch, Section 19
Pine Mill Ranch, Section 20
Pine Mill Ranch, Section 21
Pine Mill Ranch, Section 22

Commissioner Meyers:

Fort Bend County Engineering has completed and recommends approval of the traffic control plans for the above referenced subdivisions. The public hearing date for acceptance of the plans is being scheduled.

A copy of the traffic control plans are attached for your review. If you should have any questions, please give me a call.

Sincerely,

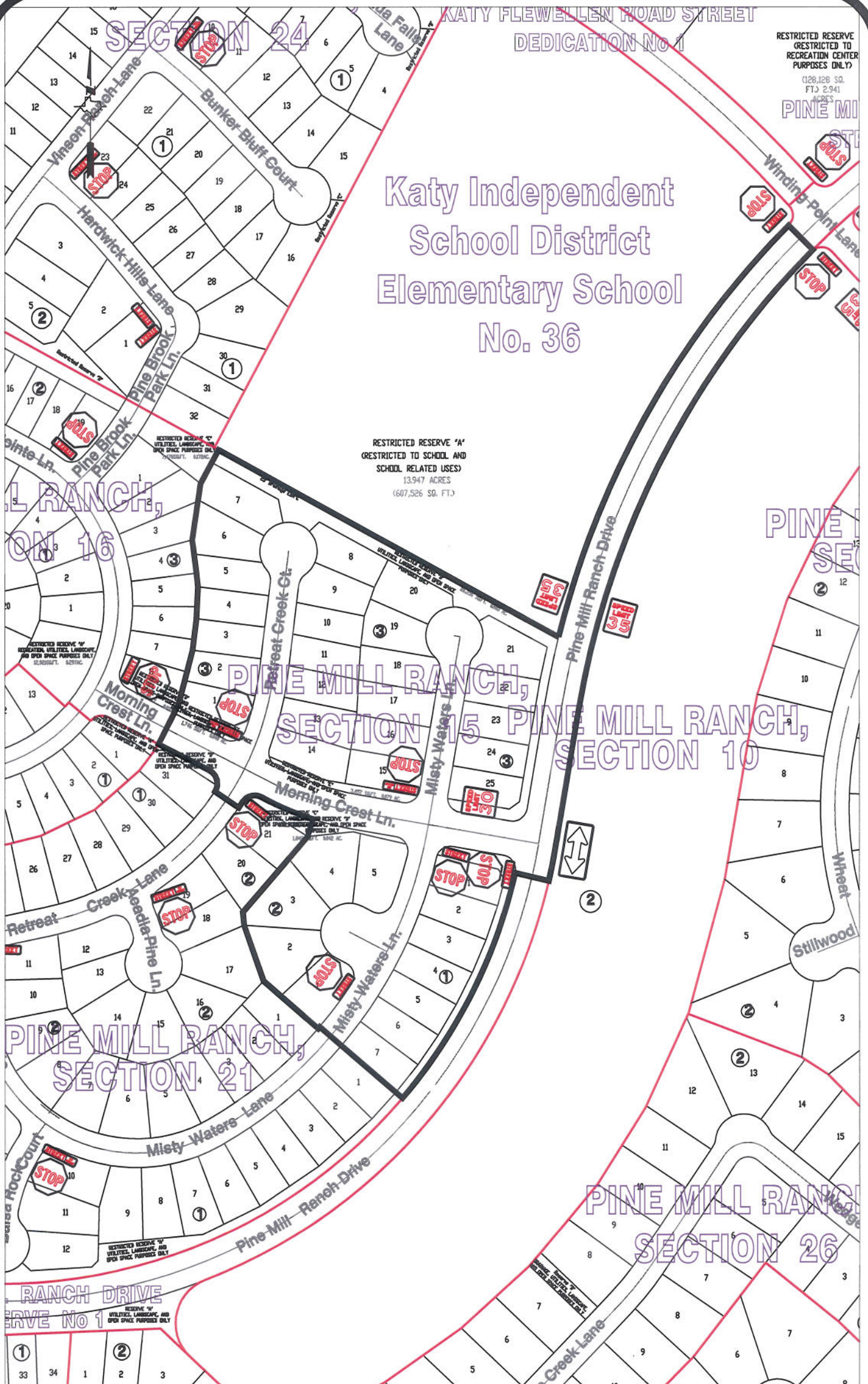
A handwritten signature in cursive script, reading "Steven L. Evans".

Steven L. Evans
Construction Coordinator

SLE/mjs

cc: Judge Robert E. Hebert, County Judge
Marc Grant - FBC Road & Bridge
Marc Grant - Signage Department
File

Katy Independent School District Elementary School No. 36



Note:

The purpose of this traffic control plan is to establish traffic control for Pine Mill Ranch, Section 15.

Drawn By: L. Brdecka

Date: 2-18-14

Approved By: Rick Staigle, PE, PTOE

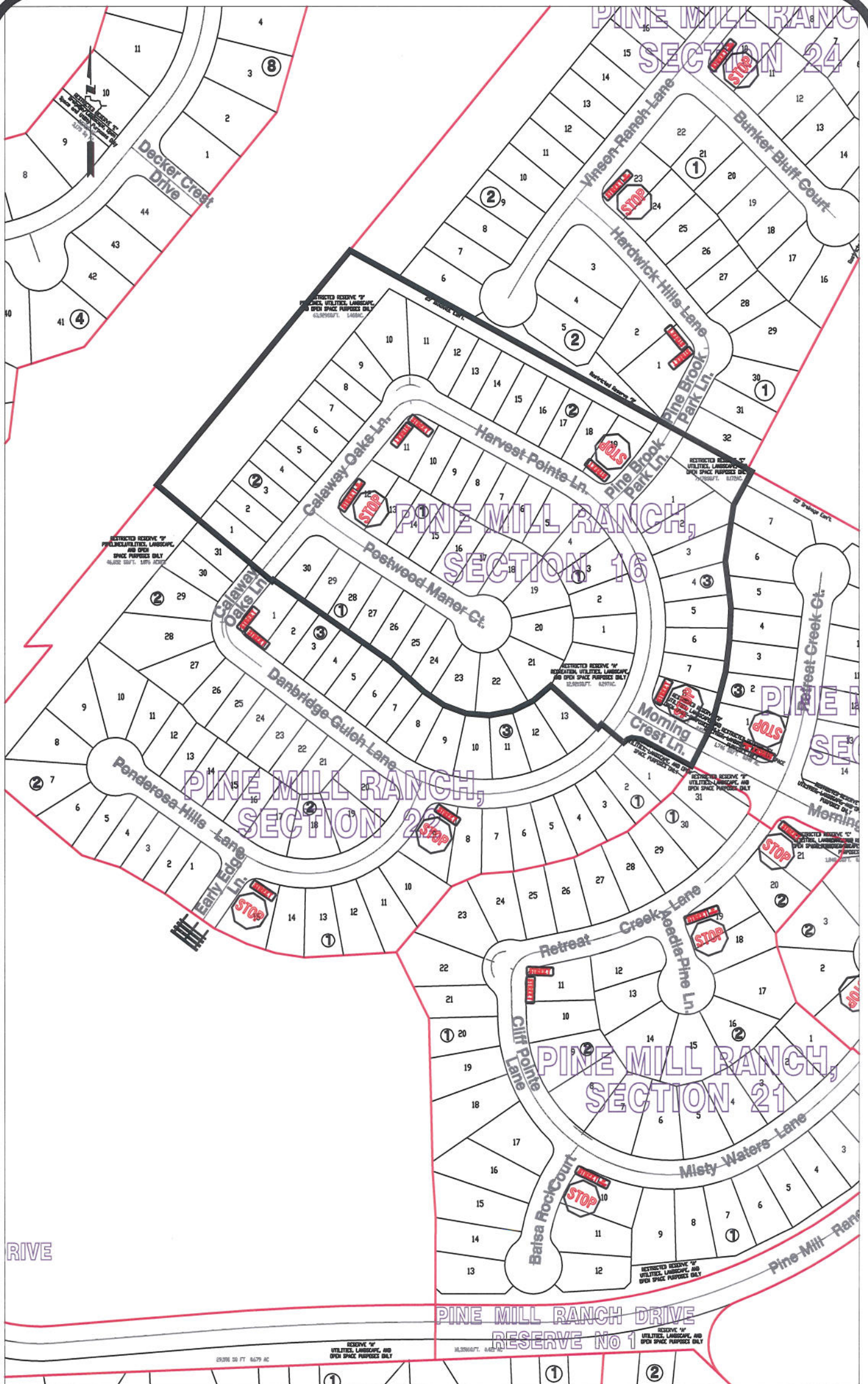
Date: 2-18-14 *RJS*

Scale

1" = 200'-0"

Pine Mill Ranch, Section 15 Control Map and Traffic Sign Layout

Fort Bend County Engineering Dept.
1124 Blume Road
Rosenberg, Texas 77471



Note:

The purpose of this traffic control plan is to establish traffic control for Pine Mill Ranch, Section 16.

Drawn By: L. Brdecka

Date: 2-18-14

Approved By: Rick Stalgie, PE, PTOE

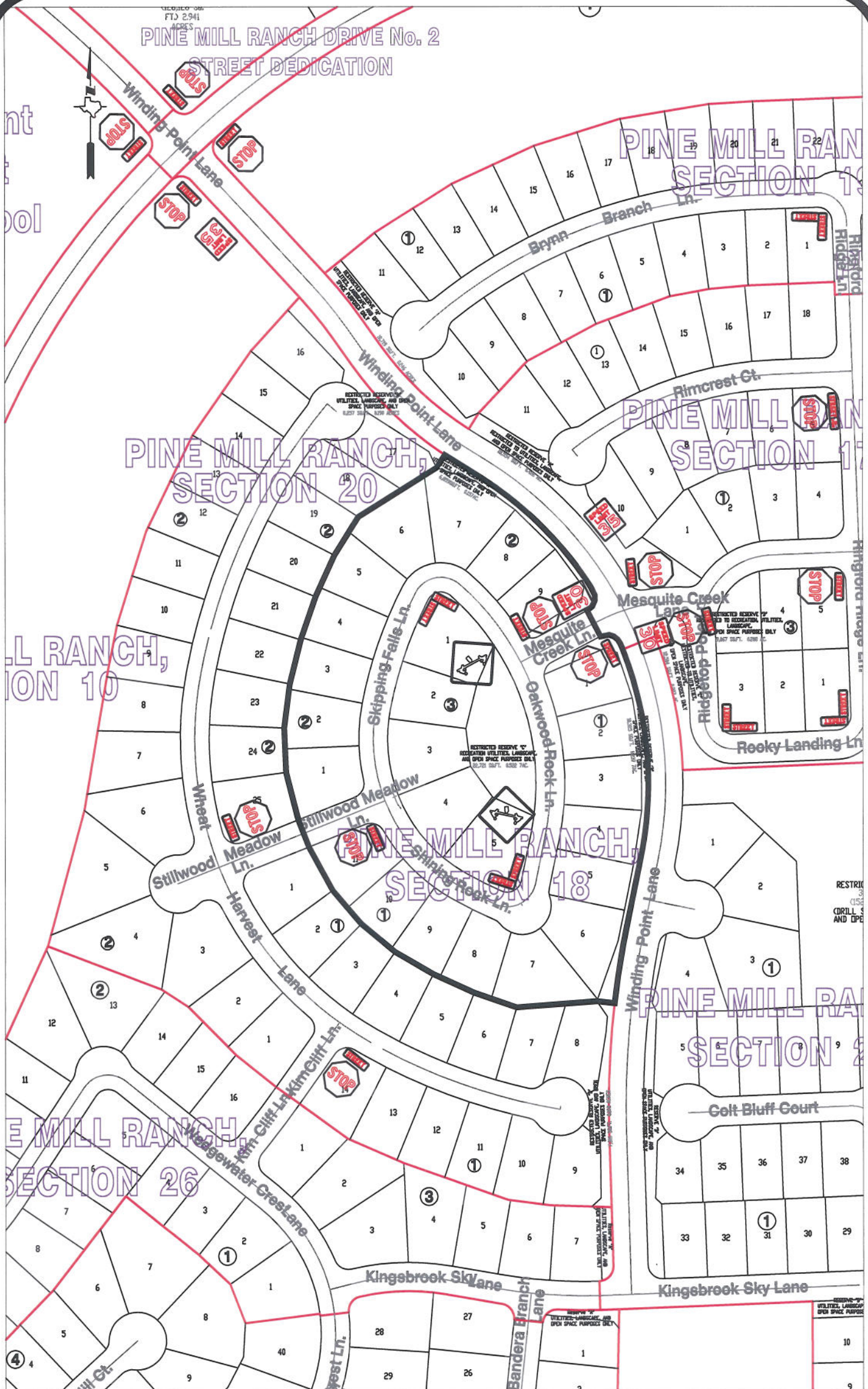
Date: 2-18-14 *ASS*

Scale

1" = 200'-0"

**Pine Mill Ranch, Section 16
Control Map and
Traffic Sign Layout**

Fort Bend County Engineering Dept.
1124 Blume Road
Rosenberg, Texas 77471



Note:

The purpose of this traffic control plan is to establish traffic control for Pine Mill Ranch, Section 18.

Drawn By: L. Brdecka

Date: 2-18-14

Approved By: Rick Staigle, PE, PTOE

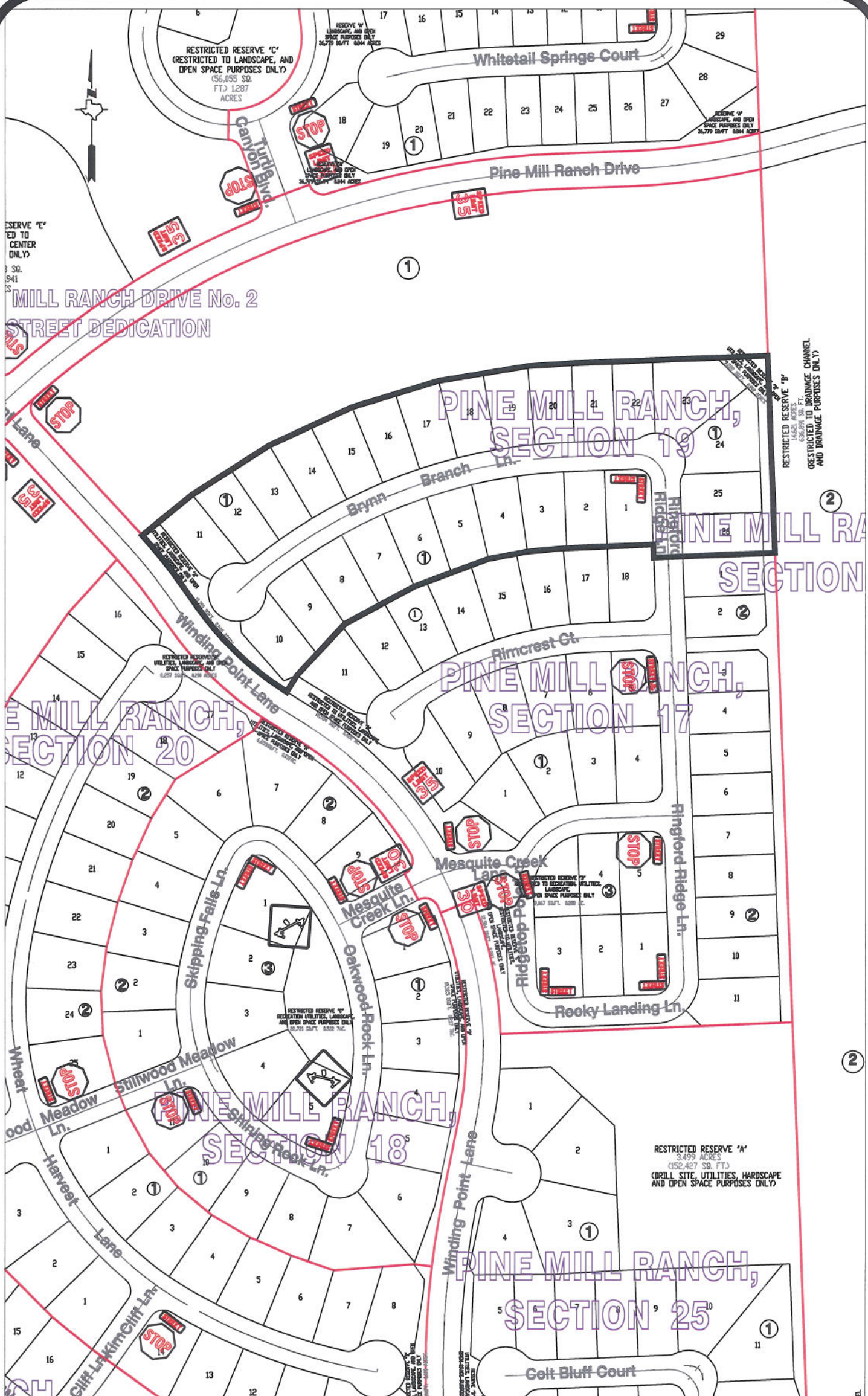
Date: 2-18-14 *RJS*

Scale

1" = 200'-0"

**Pine Mill Ranch, Section 18
Control Map and
Traffic Sign Layout**

Fort Bend County Engineering Dept.
1124 Blume Road
Rosenberg, Texas 77471



Note:

The purpose of this traffic control plan is to establish traffic control for Pine Mill Ranch, Section 19.

Drawn By: L. Brdecka

Date: 2-18-14

Approved By: Rick Stalgie, PE, PTOE

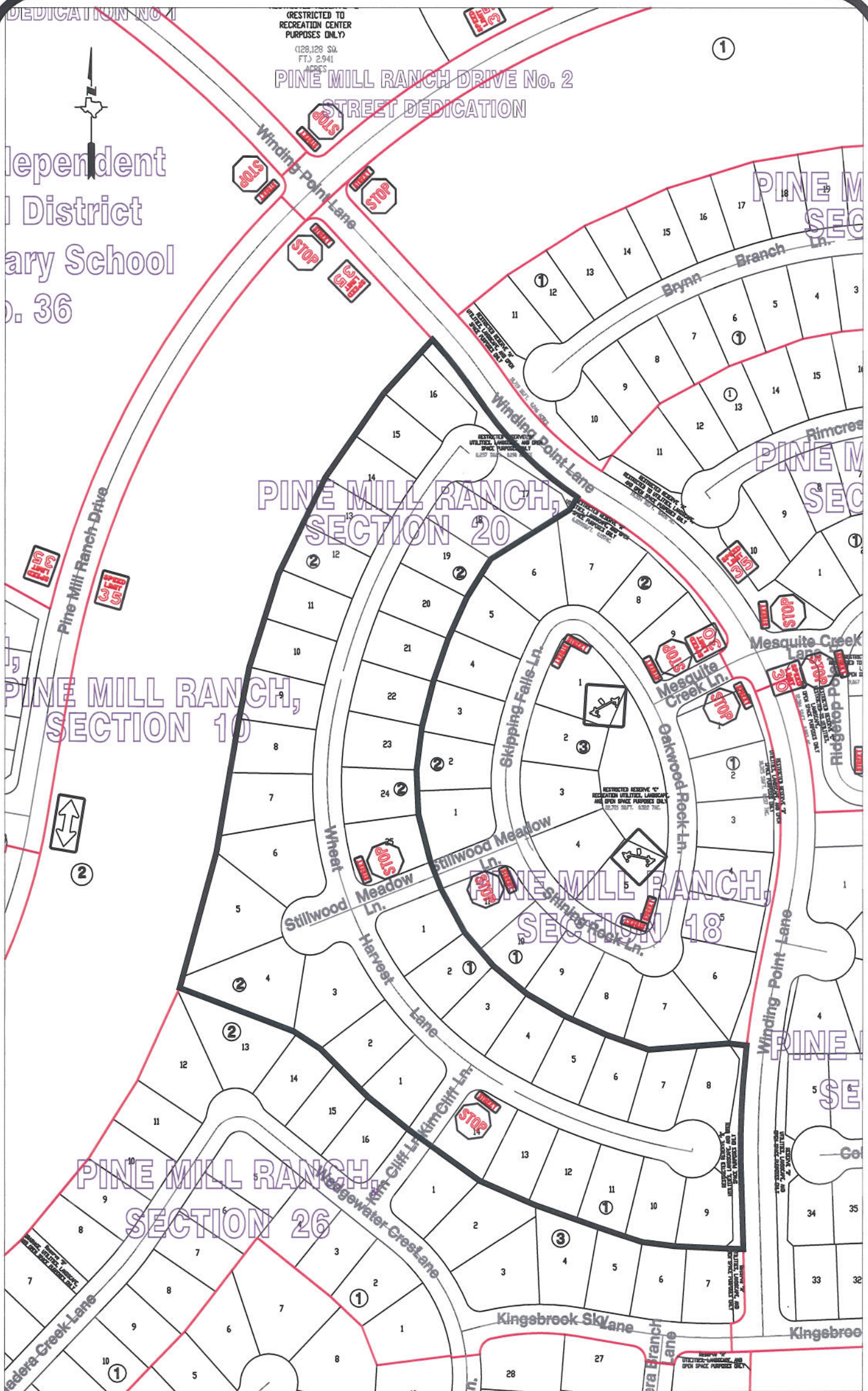
Date: 2-18-14 *RJS*

Scale

1" = 200'-0"

**Pine Mill Ranch, Section 19
Control Map and
Traffic Sign Layout**

Fort Bend County Engineering Dept.
1124 Blume Road
Rosenberg, Texas 77471



Note:

The purpose of this traffic control plan is to establish traffic control for Pine Mill Ranch, Section 20.

Drawn By: L. Brdecka

Date: 2-18-14

Approved By: Rick Staigle, PE, PTOE

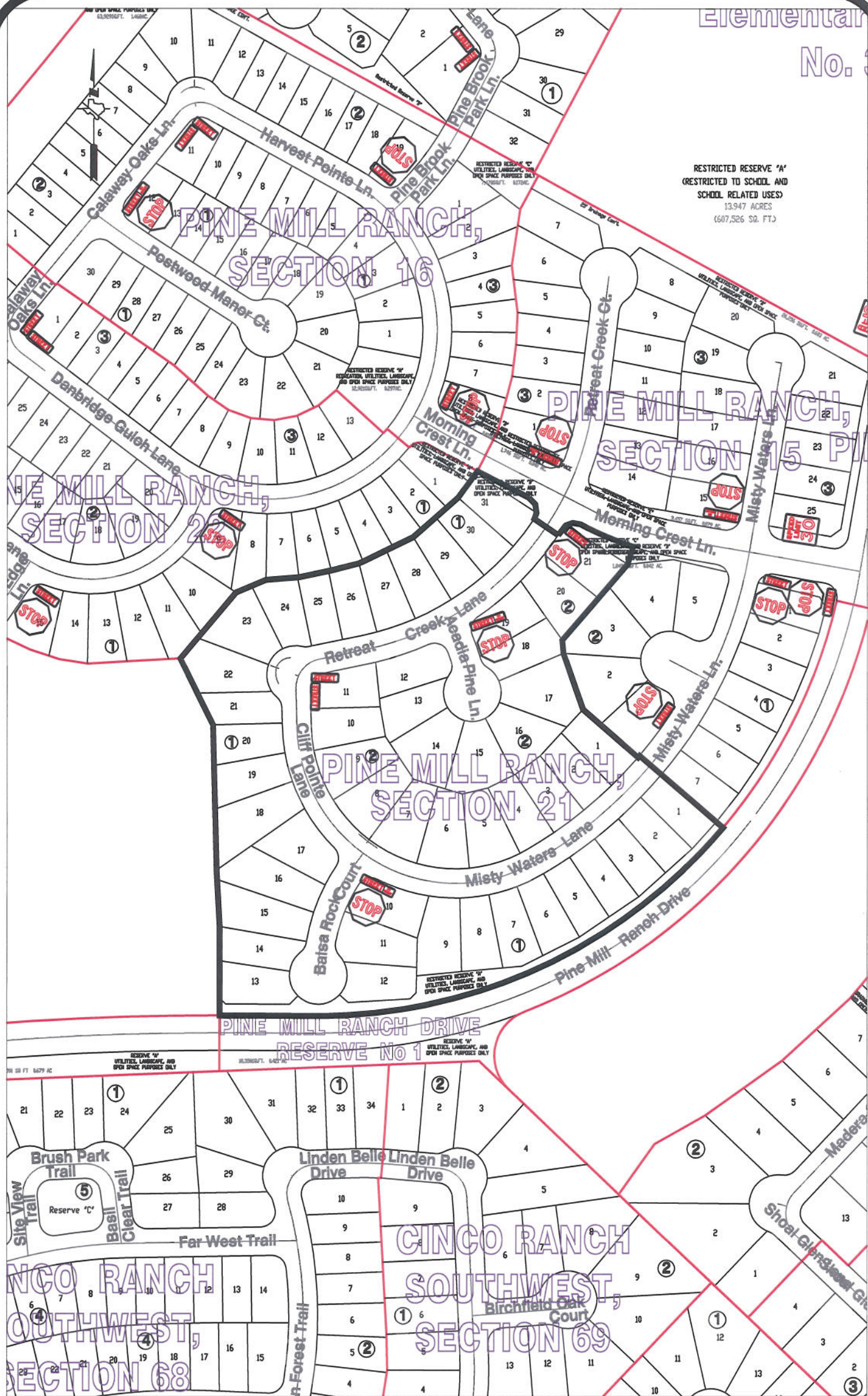
Date: 2-18-14 *RJS*

Scale

1" = 200'-0"

**Pine Mill Ranch, Section 20
Control Map and
Traffic Sign Layout**

Fort Bend County Engineering Dept.
1124 Blume Road
Rosenberg, Texas 77471



Note:

The purpose of this traffic control plan is to establish traffic control for Pine Mill Ranch, Section 21.

Drawn By: L. Brdecka

Date: 2-18-14

Approved By: Rick Staigle, PE, PTOE

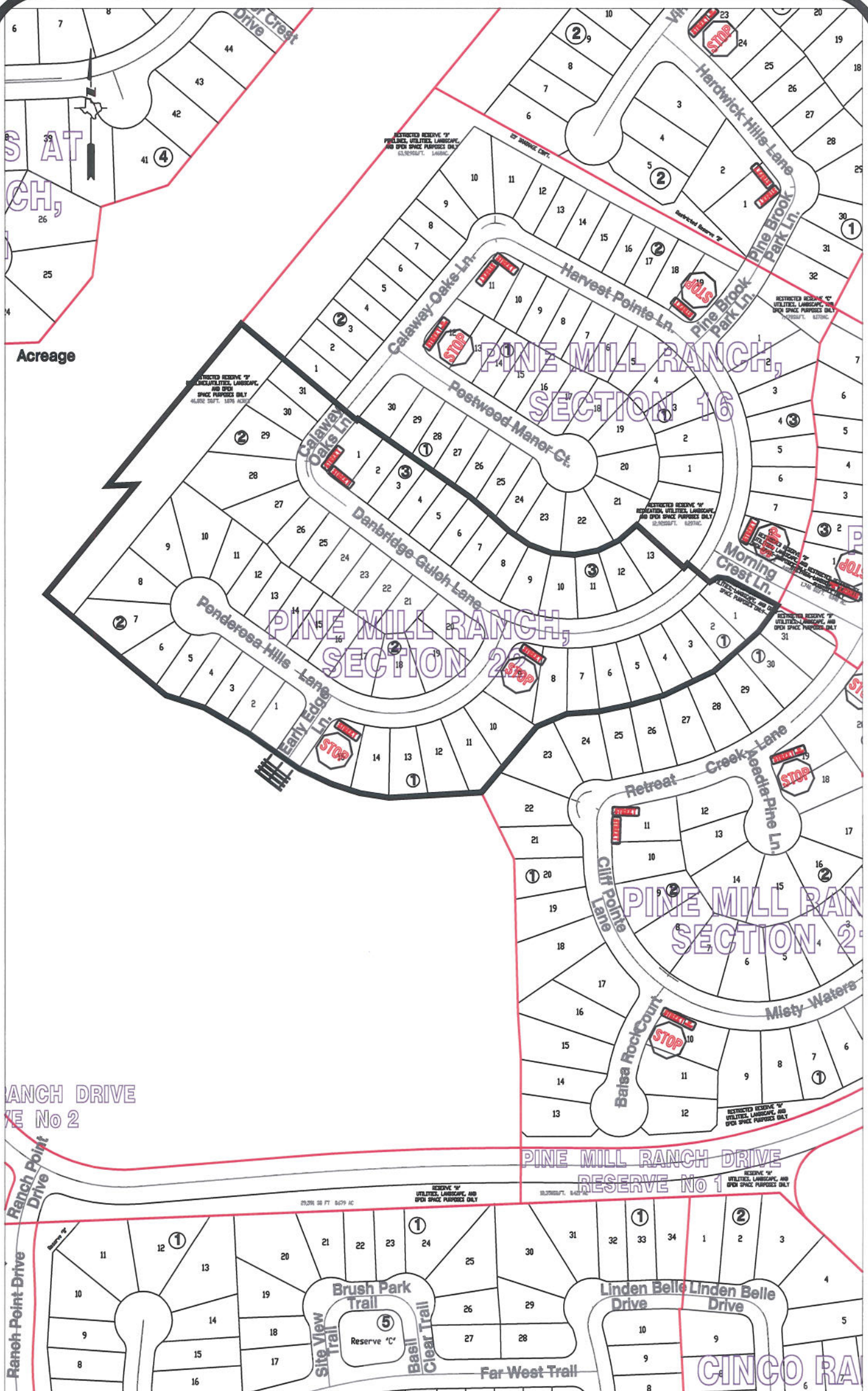
Date: 2-18-14 *RJS*

Scale

1" = 200'-0"

**Pine Mill Ranch, Section 21
Control Map and
Traffic Sign Layout**

Fort Bend County Engineering Dept.
1124 Blume Road
Rosenberg, Texas 77471



Note:

The purpose of this traffic control plan is to establish traffic control for Pine Mill Ranch, Section 22.

Drawn By: L. Brdecka

Date: 2-18-14

Approved By: Rick Stagle, PE, PTOE

Date: 2-18-14 *RJS*

Scale

1" = 200'-0"

**Pine Mill Ranch, Section 22
Control Map and
Traffic Sign Layout**

Fort Bend County Engineering Dept.
1124 Blume Road
Rosenberg, Texas 77471