



FORT BEND COUNTY ENGINEERING
Fort Bend County, Texas

Richard W. Stolleis, P.E.
County Engineer

March 7, 2014

Commissioner James Patterson
Fort Bend County Precinct 4
12919 Dairy Ashford Road
Sugar Land, Texas 77478

RE: Senova at Riverstone Section 2 - Traffic Control Plan
Senova at Riverstone, Section 3 Phase 1
Senova at Riverstone Section 3 Phase 2
Shadow Glen at Riverstone Section 3 Phase 1
Shadow Glen at Riverstone, Section 3 Phase 2
Orchard at Riverstone, Section 3
Sweetbriar at Riverstone, Section 3

Dear Commissioner:

Fort Bend County Engineering has completed and recommends approval of the traffic control plans for the above referenced subdivisions. The public hearing date for acceptance of the plans is being scheduled.

A copy of the traffic control plans are attached for your review. If you should have any questions, please give me a call.

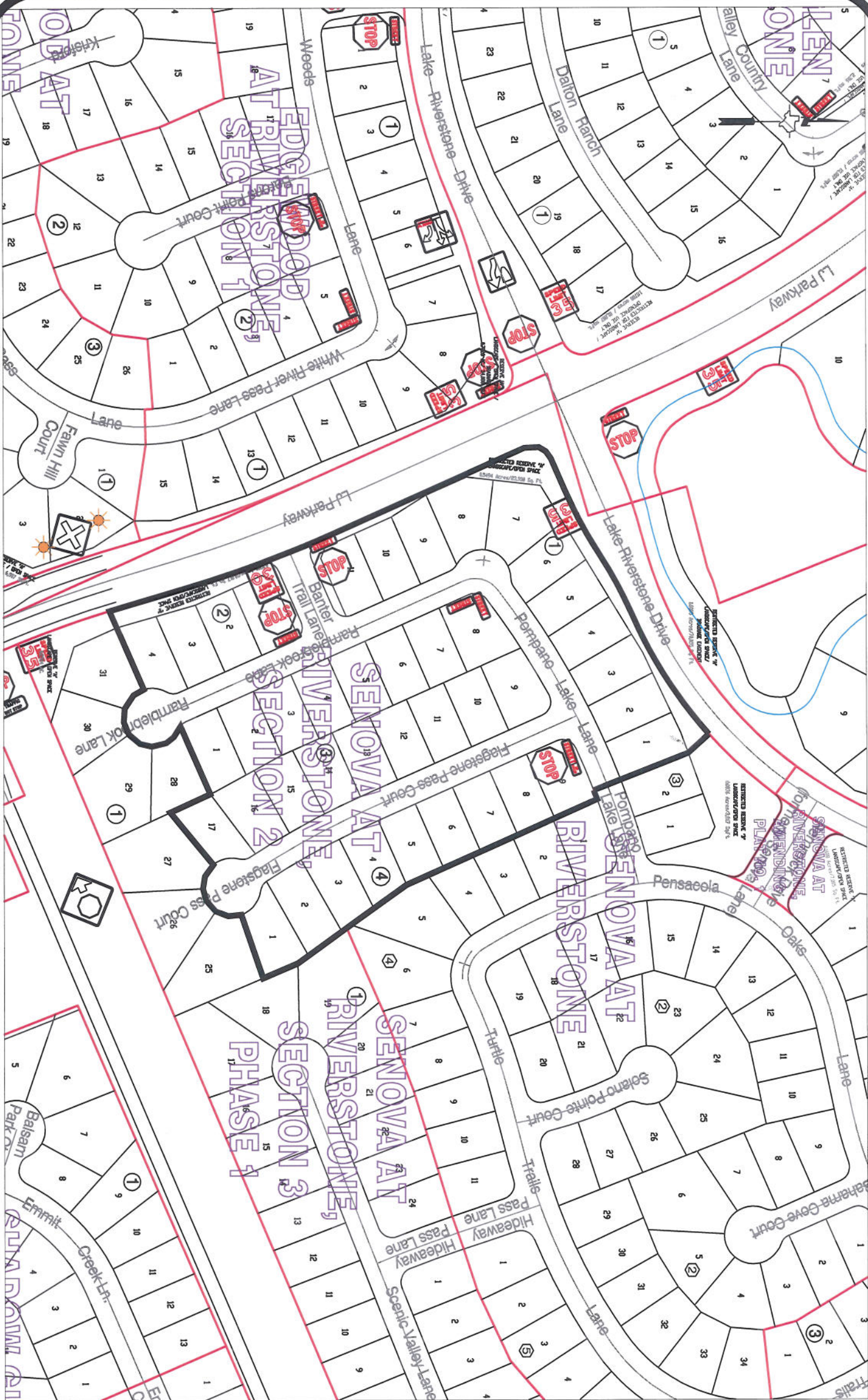
Sincerely,

A handwritten signature in black ink that reads "Steven L. Evans".

Steven L. Evans
Construction Coordinator

SLE/mjs

cc: Judge Robert E. Hebert, County Judge
Marc Grant - FBC Road & Bridge
Marc Grant - Signage Department
File



Note:

The purpose of this traffic control plan is to establish traffic control for Senova at Riverstone, Section 2.

Drawn By: L. Brdecka

Date: 2-3-14

Approved By: Rick Stagle, PE, PTOE

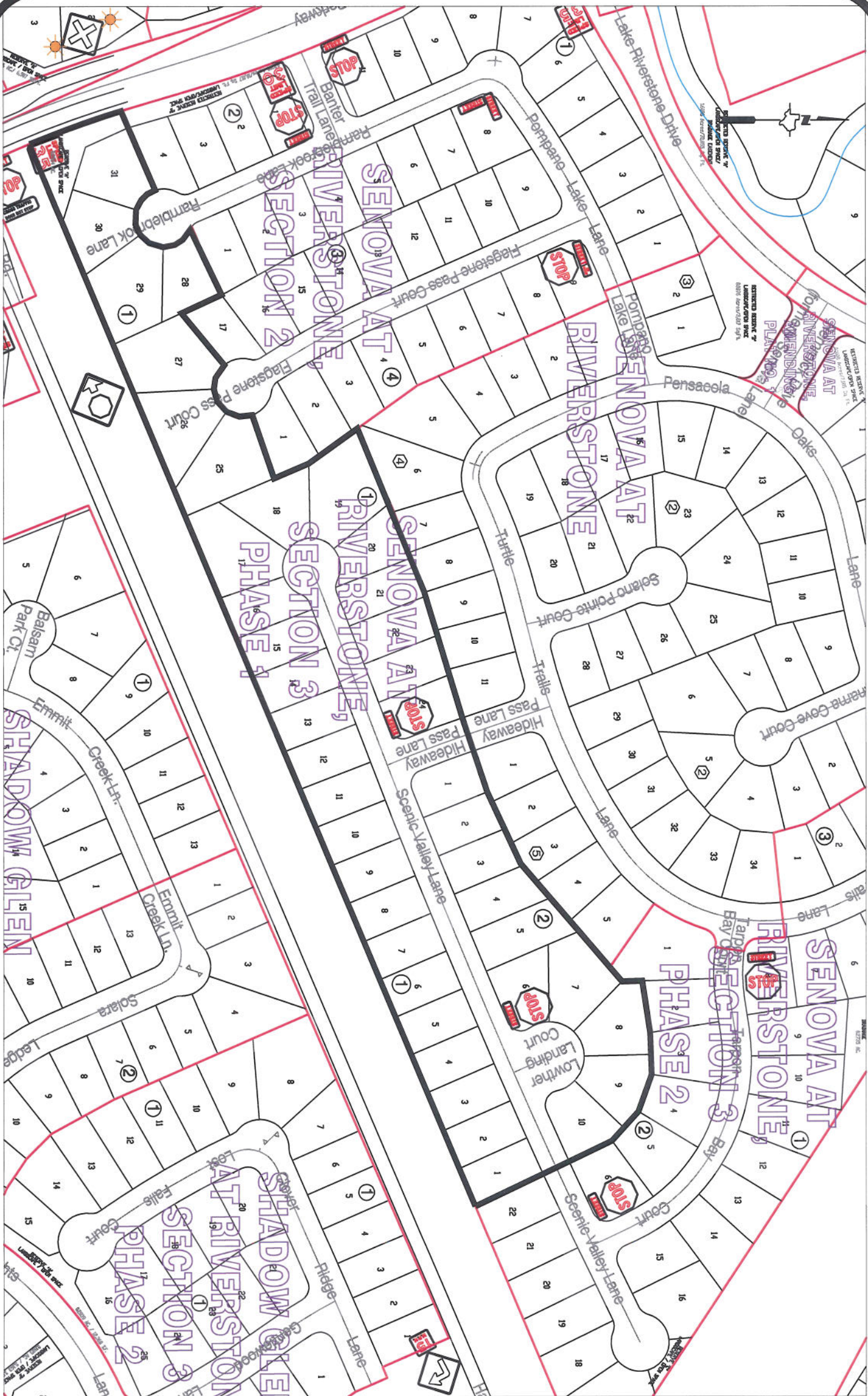
Date: 2-3-14

Scale

1" = 200'-0"

**Senova at Riverstone, Section 2
Control Map
and
Traffic Sign Layout**

Fort Bend County Engineering Dept.
1124 Blume Road
Rosenberg, Texas 77471



Note:

The purpose of this traffic control plan is to establish traffic control for Senova at Riverstone, Section 3 Phase 1.

Drawn By: L. Brdecka

Date: 3-3-14

Approved By: Rick Stalgie, PE, PTOE

Date: 3-3-14 *RJS*

Scale

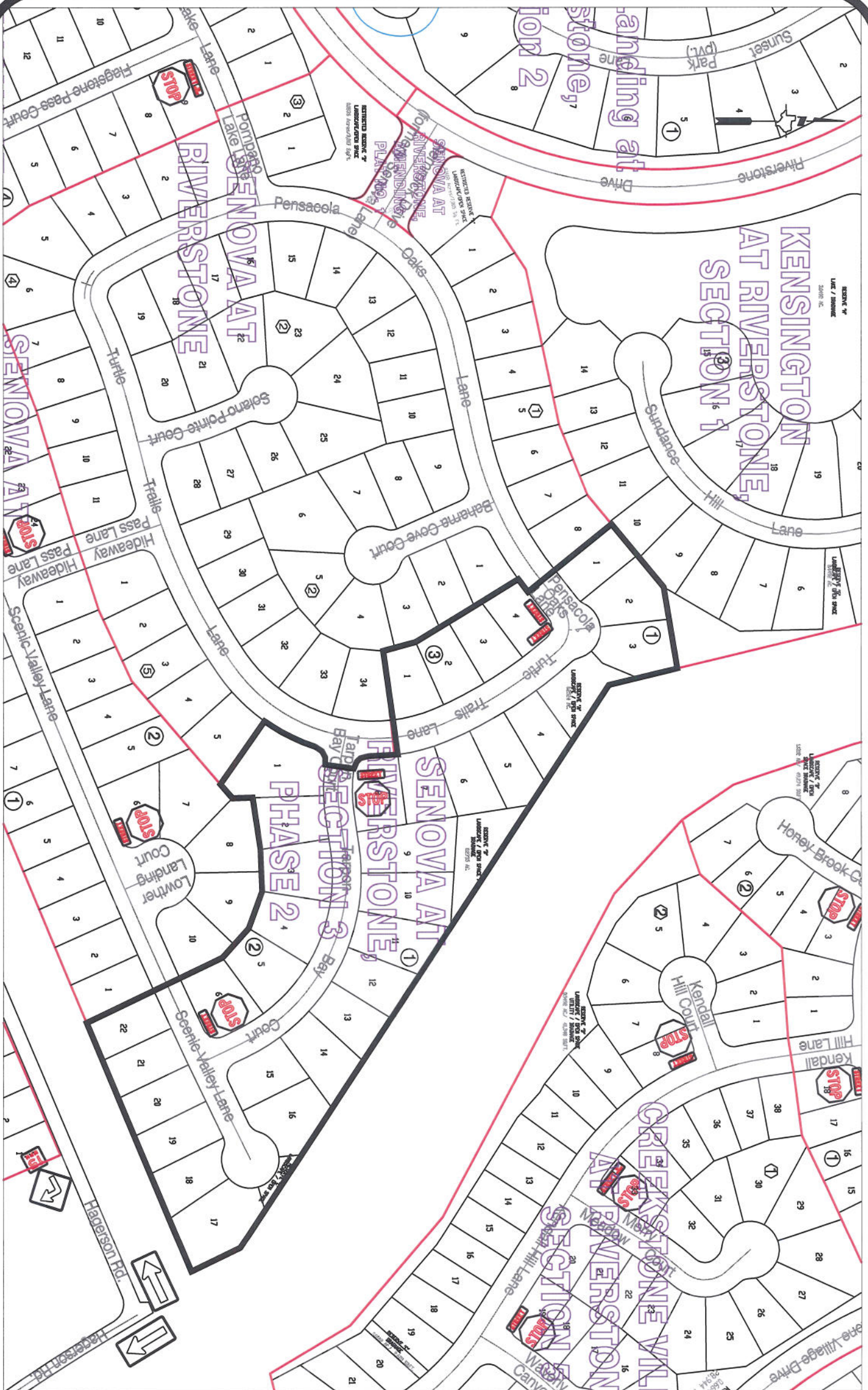
1" = 200'-0"

Senova at Riverstone, Section 3

Phase 1

**Control Map and
Traffic Sign Layout**

Fort Bend County Engineering Dept.
1124 Blume Road
Rosenberg, Texas 77471



Note:

The purpose of this traffic control plan is to establish traffic control for Senova at Riverstone, Section 3 Phase 2.

Drawn By: L. Brdecka

Date: 3-3-14

Approved By: Rick Staigle, PE, PTOE

Date: 3-3-14 *RJS*

Scale

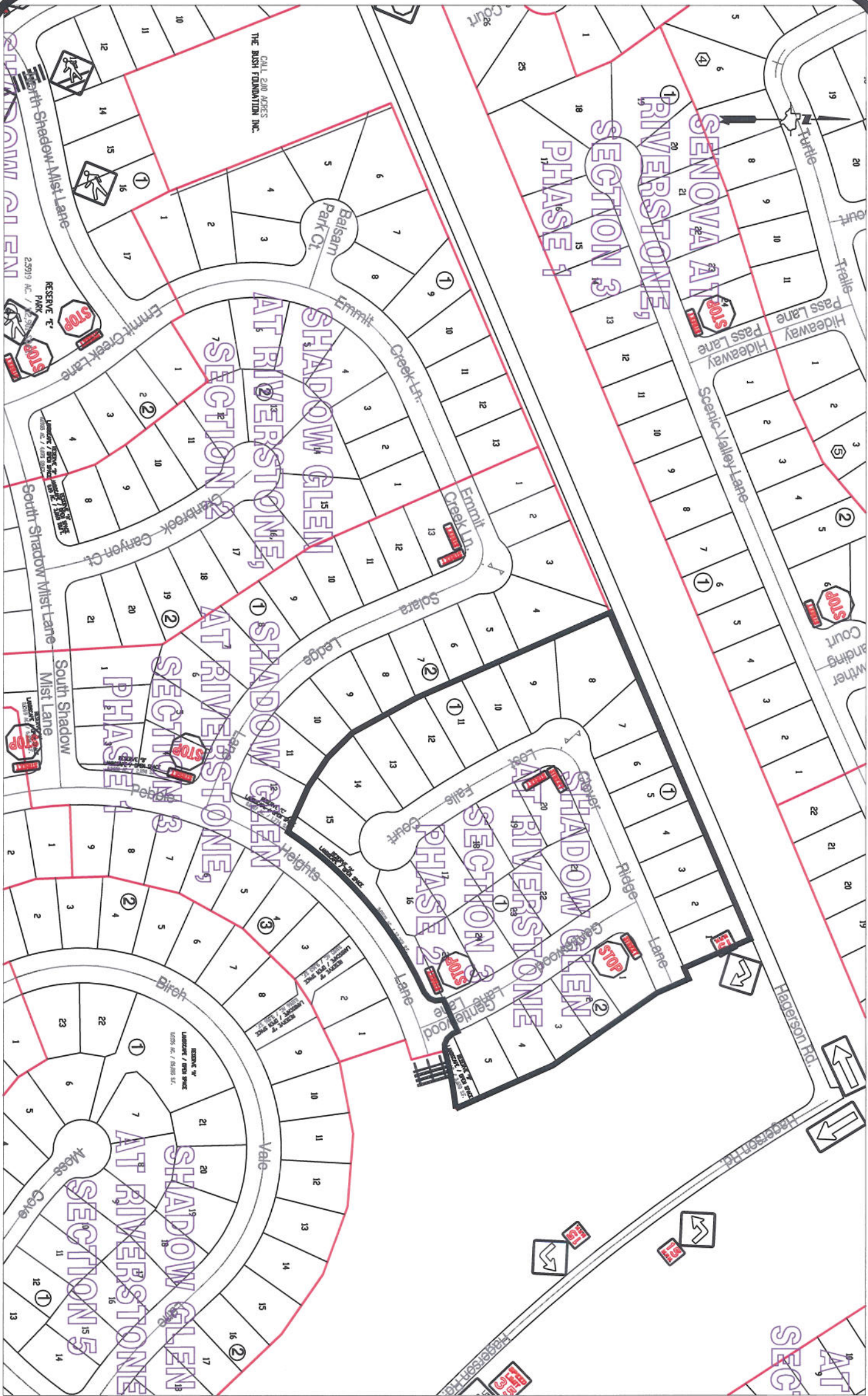
1" = 200'-0"

Senova at Riverstone, Section 3

Phase 2

**Control Map and
Traffic Sign Layout**

Fort Bend County Engineering Dept.
1124 Blume Road
Rosenberg, Texas 77471



Note:

The purpose of this traffic control plan is to establish traffic control for Shadow Glen at Riverstone, Section 3 Phase 2.

Drawn By: L. Brdecka

Date: 3-3-14

Approved By: Rick Staigle, PE, PTOE

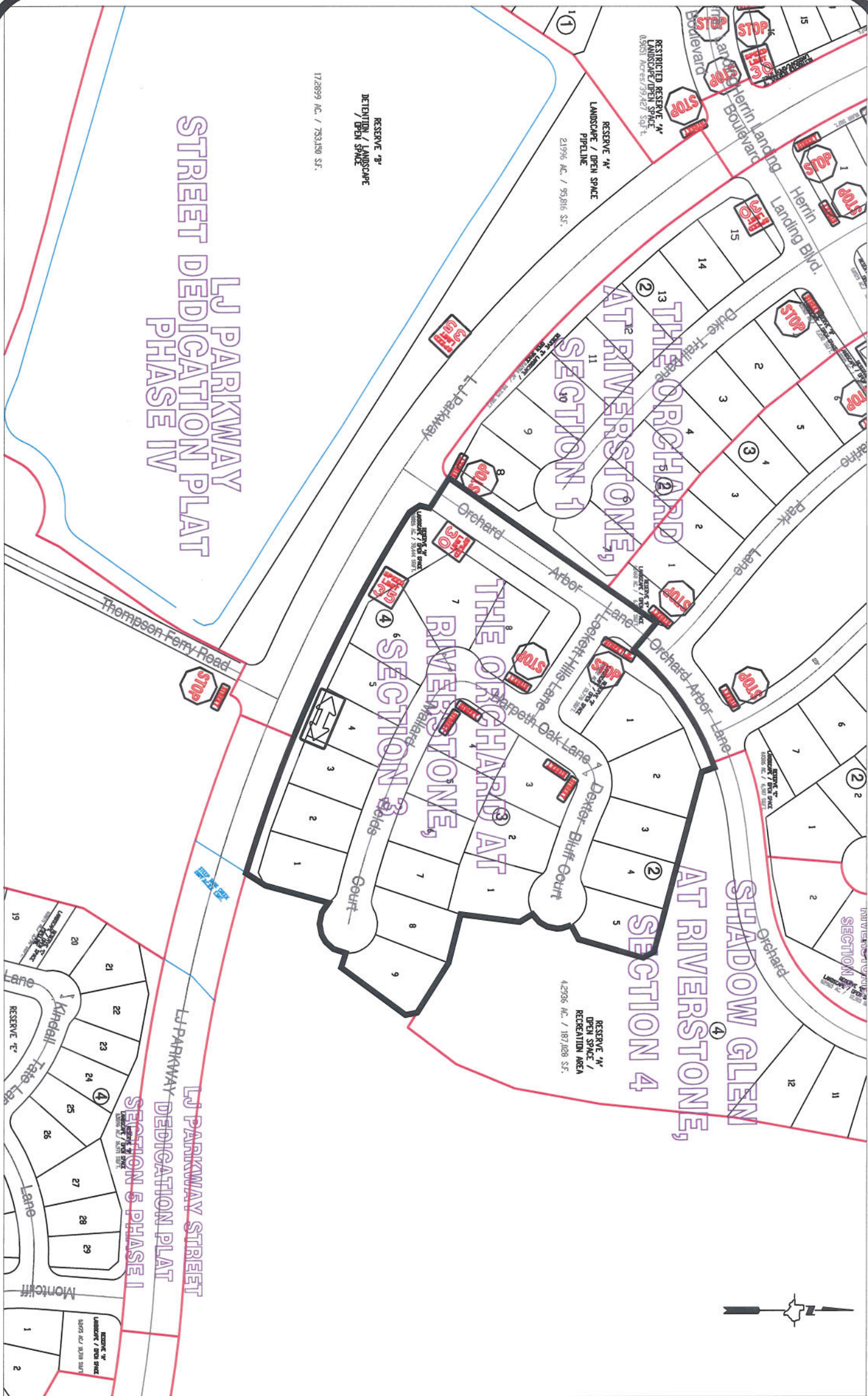
Date: 3-3-14

Scale

1" = 200'-0"

**Shadow Glen at Riverstone,
Section 3 Phase 2
Control Map and
Traffic Sign Layout**

Fort Bend County Engineering Dept.
1124 Blume Road
Rosenberg, Texas 77471



LJ PARKWAY
STREET DEDICATION PLAT
PHASE IV

LJ PARKWAY STREET
STREET DEDICATION PLAT
PHASE I

RESERVE "B"
DETENTION / LANDSCAPE
/ OPEN SPACE
17,2899 AC. / 753,150 S.F.

RESERVE "A"
LANDSCAPE / OPEN SPACE
PIPELINE
21,996 AC. / 95,816 S.F.

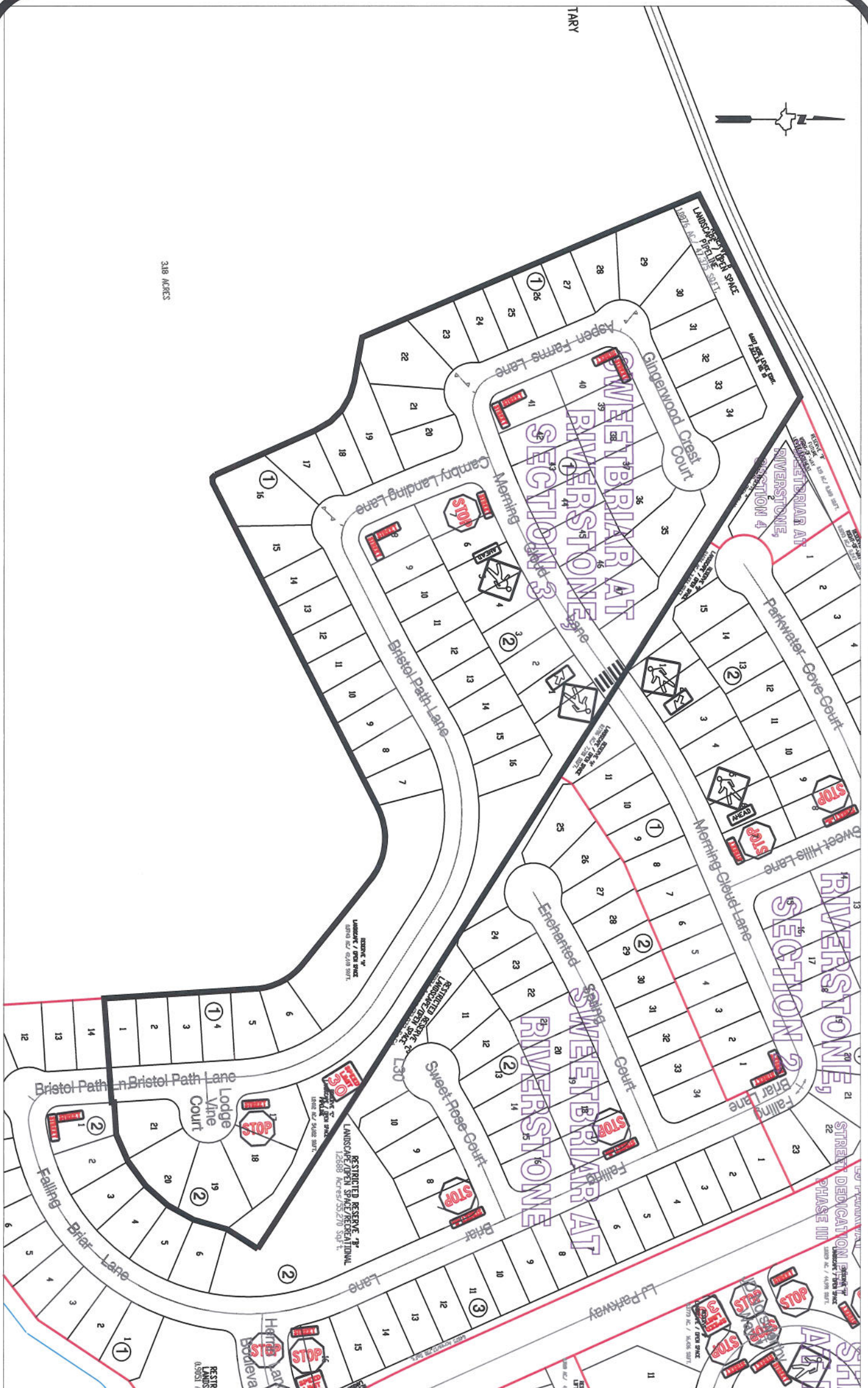
RESERVE "A"
OPEN SPACE /
RECREATION AREA
4,2936 AC. / 187,108 S.F.

Note:

The purpose of this traffic control plan is to establish traffic control for The Orchard at Riverstone, Section 3.

Drawn By: L. Brdecka
Date: 3-4-14
Approved By: Rick Stalgie, PE, PTOE
Date: 3-4-14 *RJS*
Scale
1" = 200'-0"

**The Orchard at Riverstone, Section 3
Control Map
and
Traffic Sign Layout**
Fort Bend County Engineering Dept.
1124 Blume Road
Rosenberg, Texas 77471



318 ACRES

Note:

The purpose of this traffic control plan is to establish traffic control for Sweetbriar at Riverstone, Section 3.

Drawn By: L. Brdecka

Date: 3-3-14

Approved By: Rick Stalgie, PE, PTOE

Date: 3-3-14 *RJS*

Scale

1" = 200'-0"

**Sweetbriar at Riverstone,
Section 3**

**Control Map and
Traffic Sign Layout**

Fort Bend County Engineering Dept.
1124 Blume Road
Rosenberg, Texas 77471