



FORT BEND COUNTY ENGINEERING

Fort Bend County, Texas

Richard W. Stolleis, P.E.
County Engineer

February 26, 2014

Commissioner Grady Prestage
Fort Bend County Precinct 2
3030 Texas Parkway, Suite 213
Missouri City, Texas 77459

RE: Sienna Village of Bees Creek, Section 6 - Traffic Control Plan
Sienna Village of Bees Creek, Section 15
Sienna Village of Anderson Springs, Section 23
Sienna Ranch Road North Phase 3 Street Dedication
Sienna Ranch Road North Phase 4 Street Dedication

Dear Commissioner:

Fort Bend County Engineering has completed and recommends approval of the traffic control plans for the above referenced subdivisions. The public hearing date for acceptance of the plans is being scheduled.

A copy of the traffic control plans are attached for your review. If you should have any questions, please give me a call.

Sincerely,

A handwritten signature in black ink, reading "Steven L. Evans".

Steven L. Evans
Construction Coordinator

NDH/mjs

cc: Judge Robert E. Hebert, County Judge
Marc Grant - FBC Road & Bridge
Marc Grant - Signage Department
File



Note:

The purpose of this traffic control plan is to establish traffic control for Sienna Village of Bees Creek, Section 6 as indicated on the drawing.

Drawn By: L. Brdecka

Date: 2-24-14

Approved By: Rick Staigle, PE, PTOE

Date: 2-24-14

Scale

1" = 300'-0"

**Sienna Village of Bees Creek,
Section 6**

**Control Map and
Traffic Sign Layout**

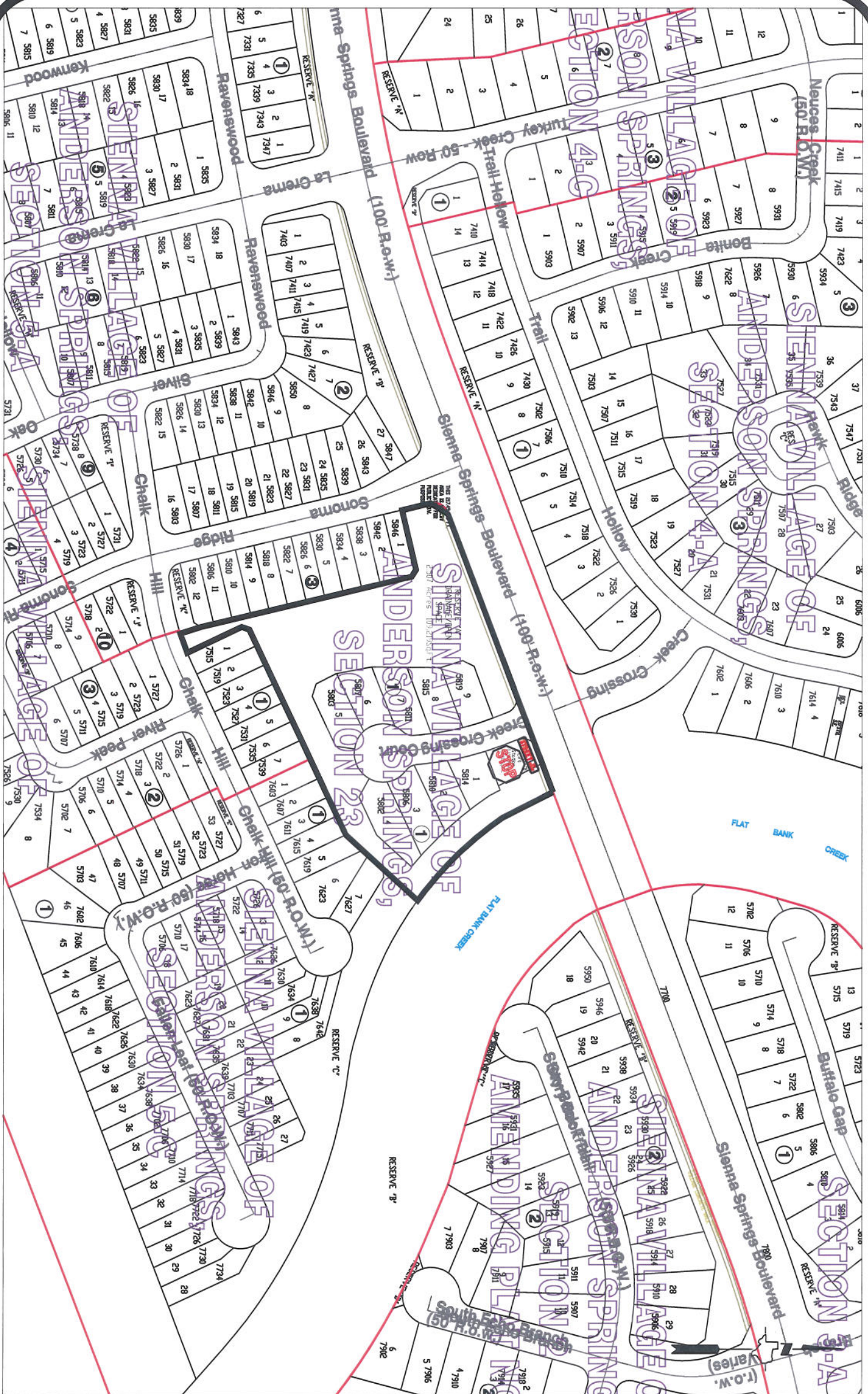
Fort Bend County Engineering Dept.
1124 Blume Road
Rosenberg, Texas 77471



Note:

The purpose of this traffic control plan is to establish traffic control for Sienna Village of Bees Creek, Section 15 as indicated on the drawing.

Drawn By: L. Brdecka Date: 2-24-14	Sienna Village of Bees Creek, Section 15 Control Map and Traffic Sign Layout Fort Bend County Engineering Dept. 1124 Blume Road Rosenberg, Texas 77471
Approved By: Rick Staigle, PE, PTOE Date: 2-24-14	
Scale 1" = 200'-0"	
[Signature: RJS]	



Note:

The purpose of this traffic control plan is to establish traffic control for Sienna Village of Anderson Springs, Section 23 as indicated on the drawing.

Drawn By: L. Brdecka

Date: 2-24-14

Approved By: Rick Staigle, PE, PTOE

Date: 2-24-14

Scale

1" = 200'-0"

Sienna Village of Anderson Springs,
Section 23
Control Map and
Traffic Sign Layout

Fort Bend County Engineering Dept.
1124 Blume Road
Rosenberg, Texas 77471



Note:

The purpose of this traffic control plan is to establish traffic control for Sienna Ranch Road North Phase III Street Dedication as indicated on the drawing.

Drawn By: L. Brdecka

Date: 2-24-14

Approved By: Rick Staigle, PE, PTOE

Date: 2-24-14 *RJS*

Scale

1" = 300'-0"

**Sienna Ranch Road North Phase III
Street Dedication
Control Map and
Traffic Sign Layout**

Fort Bend County Engineering Dept.
1124 Blume Road
Rosenberg, Texas 77471



Note:

The purpose of this traffic control plan is to establish traffic control for Sienna Ranch Road North Phase 4 Street Dedication as indicated on the drawing.

Drawn By: L. Brdecka

Date: 2-24-14

Approved By: Rick Staigle, PE, PTOE

Date: 2-24-14

Scale

1" = 300'-0"

**Sienna Ranch Road North Phase 4
Street Dedication
Control Map and
Traffic Sign Layout**

Fort Bend County Engineering Dept.
1124 Blume Road
Rosenberg, Texas 77471