



FORT BEND COUNTY ENGINEERING

Fort Bend County, Texas

Richard W. Stolleis, P.E.
County Engineer

February 6, 2014

Commissioner W. A. "Andy" Meyers
Fort Bend County Precinct 3
22333 Grand Corner Drive
Katy, Texas 77494

RE: Traffic/Safety Study - Katy ISD - (Firethorne Dev.), Wolman Elementary School, for installation of "No Parking" signs at South Firethorne Road & North Firethorne Road

Dear Commissioner Meyers:

The Fort Bend County Engineering Department has conducted a traffic study at the request of, Angela Kovar, Assistant Principal at Wolman Elementary School, to add "No Parking" signs during school zone hours at the intersection of South Firethorne Road and North Firethorne Road. This intersection has recently been visited several times to consider traffic control devices to improve safety in and around the school.

The Fort Bend County Engineering Department recommends approval of the installation of "No Parking" signs during school zone hours to be located on the north side of South Firethorne Road beginning at the intersection of North Firethorne Road and extending west to Texas Laurel Drive.

A copy of the traffic control plan is attached for your review. A public hearing will be scheduled on the next available Commissioner's Court agenda. If you should have any questions, please give me a call.

Sincerely,

A handwritten signature in black ink, appearing to read "Nathan D. Hatcher", is written over a horizontal line.

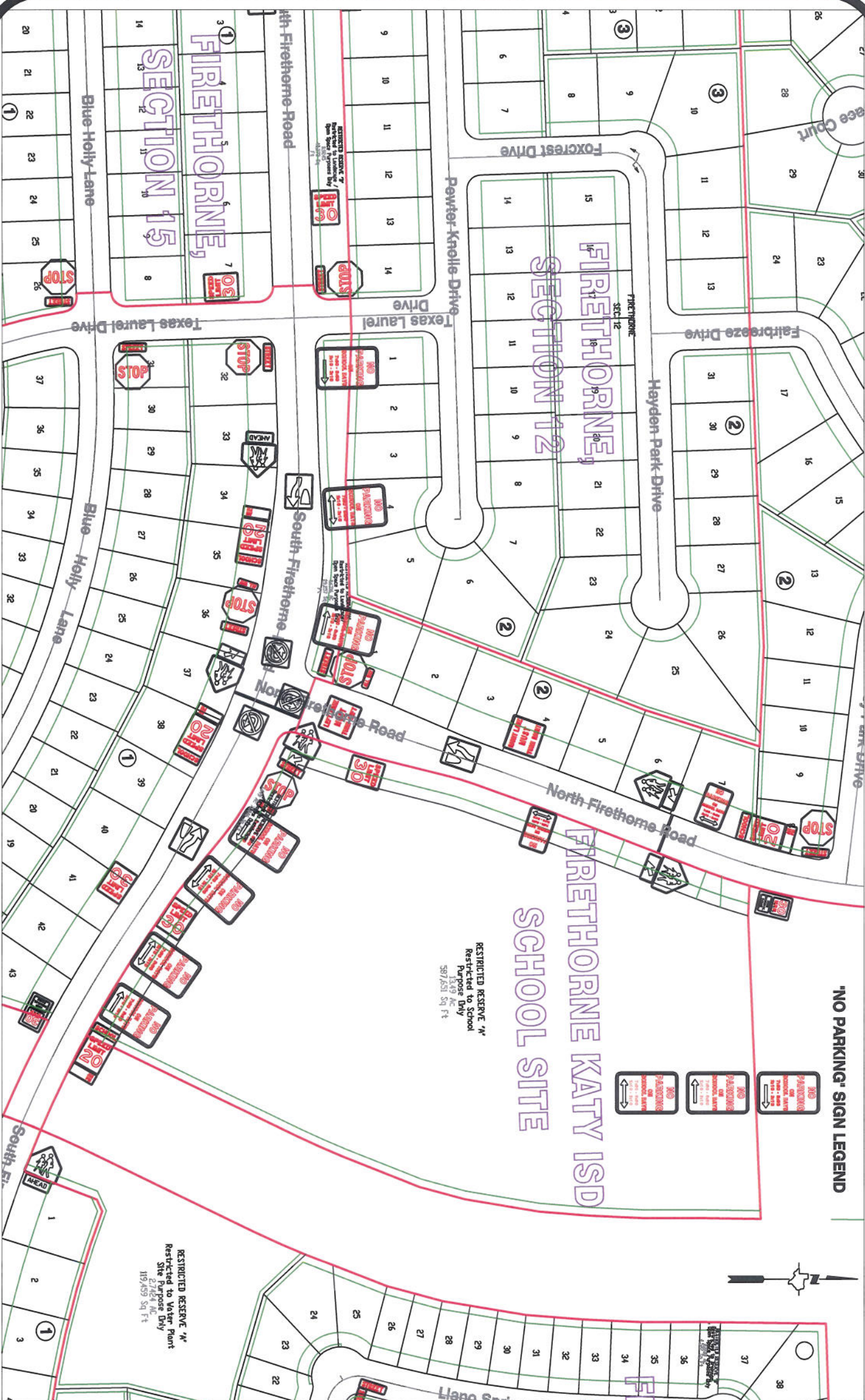
Nathan D. Hatcher
Development Coordinator

NDH/mjs

cc: Judge Robert E. Hebert, County Judge
Marc Grant - FBC Road & Bridge
Marc Grant - Signage Department
Ms. Angela Kovar, Wolman Elementary School AngelaSKovar@KatyISD.org
File

301 Jackson, Richmond, Texas 77469 • (281) 633-7501 • Fax (281) 342-7366

I:\WPDATA\LETTERS\TRAFSTUD\Katy ISD_Firethorne_Wolman Elem_0214.doc



Note:
The purpose of this traffic control plan is to revise traffic control for Firethorne K.I.S.D. School Site with the addition of 'No Parking Signs' (R7-1) signs as indicated on the drawing.

Drawn By: L. Brdecka
Date: 1-27-14
Approved By: Rick Staigle, PE, PTOE
Date: 1-27-14 *RJS*
Scale
1" = 200'-0"

**Firethorne Katy I.S.D. School Site
Control Map and
Traffic Sign Layout**

Fort Bend County Engineering Dept.
1124 Blume Road
Rosenberg, Texas 77471