



FORT BEND COUNTY ENGINEERING

Fort Bend County, Texas

Richard W. Stolleis, P.E.
County Engineer

January 6, 2014

Commissioner Grady Prestage
Fort Bend County Precinct 2
3030 Texas Parkway, Suite 213
Missouri City, Texas 77459

RE: Sienna Ranch Road - Traffic Control Plan

Commissioner Prestage:

Fort Bend County Engineering has completed the traffic control plan for the above referenced Development.

The public hearing date for acceptance of the revised traffic control plan is being scheduled.

A copy of the traffic control plan is attached for your review. If you should have any questions, please give me a call.

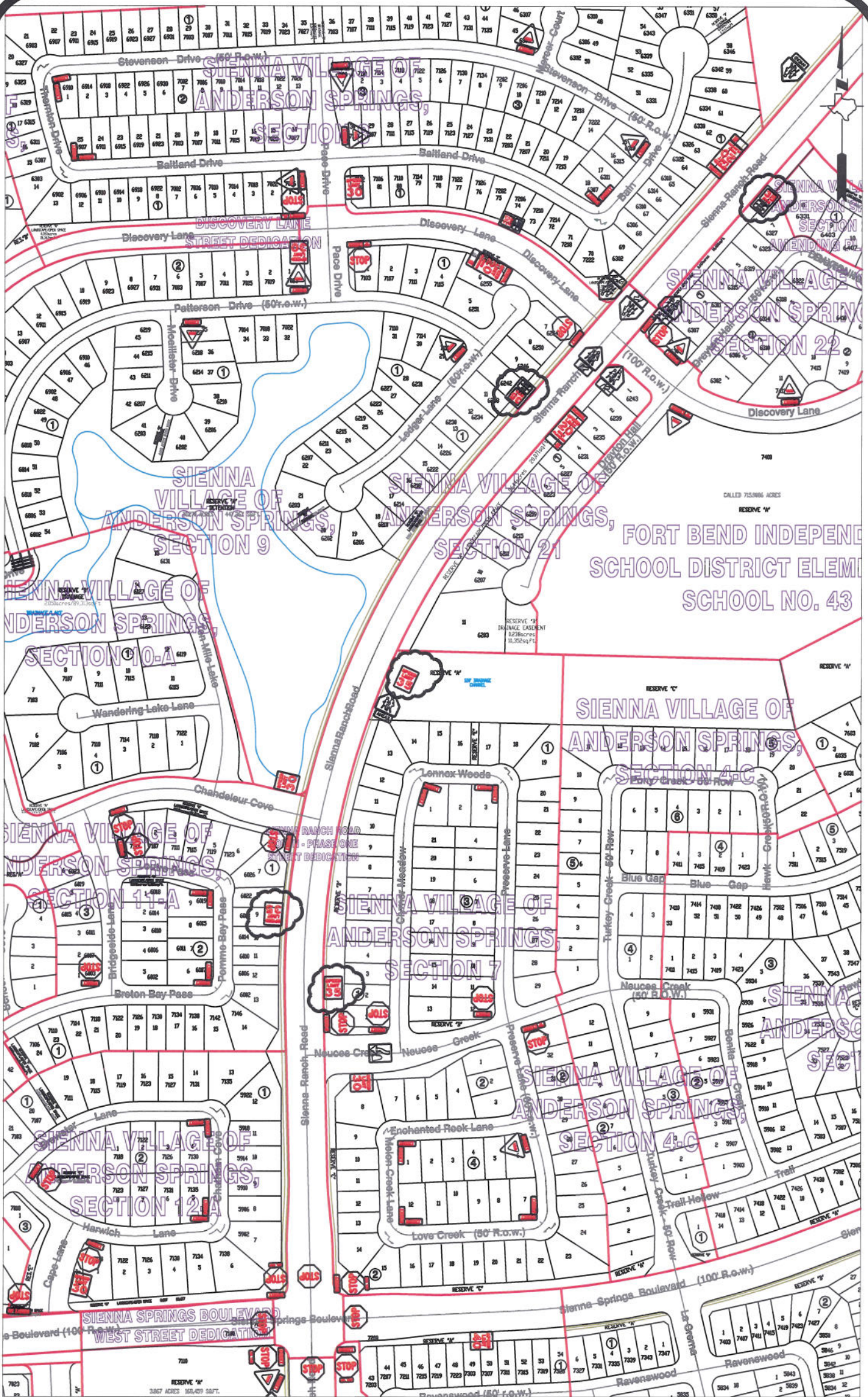
Sincerely,

A handwritten signature in black ink that reads "Rick J. Staigle, P.E., PTOE".

Rick J. Staigle, P.E., PTOE
Assistant County Engineer

RJS/mjs

cc: Judge Robert E. Hebert, County Judge
Marc Grant - FBC Road & Bridge
Marc Grant - Signage Department
File



Note:

Sheet 1 of 5

The purpose of this traffic control plan is to reduce the speed limit from 45 M.P.H. to 35 M.P.H. on Sienna Ranch Road as indicated on the drawing.

Drawn By: L. Brdecka

Date: 1-2-14

Approved By: Rick Staigle, P.E.

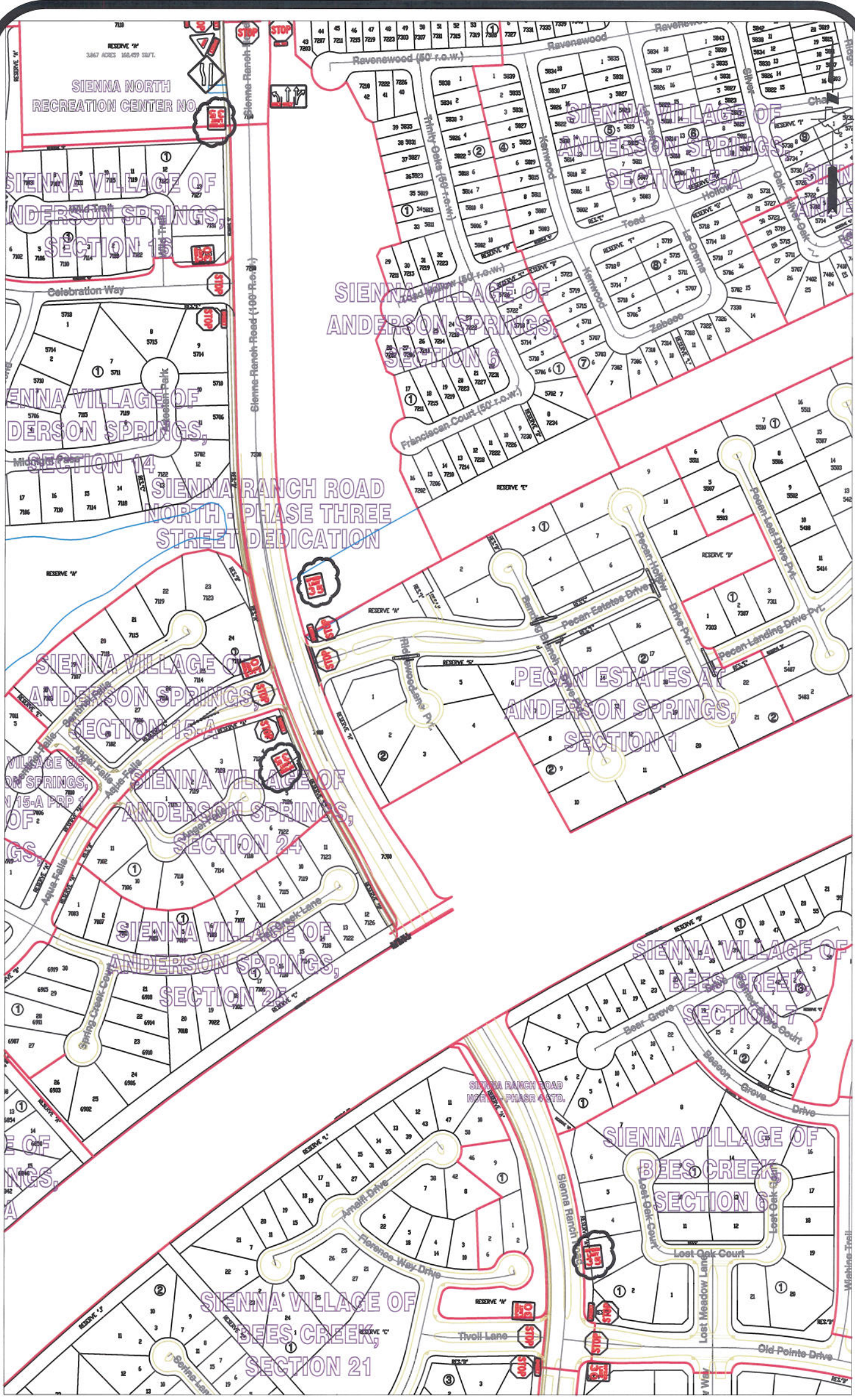
Date: 1-2-14

Scale

1" = 300'-0"

Sienna Ranch Road
Revised Control Map and
Traffic Sign Layout

Fort Bend County Engineering Dept.
1124 Blume Road
Rosenberg, Texas 77471



Note:

Sheet 2 of 5

The purpose of this traffic control plan is to reduce the speed limit from 45 M.P.H. to 35 M.P.H. on Sienna Ranch Road as indicated on the drawing.

Drawn By: L. Brdecka

Date: 1-2-14

Approved By: Rick Staigle, P.E.

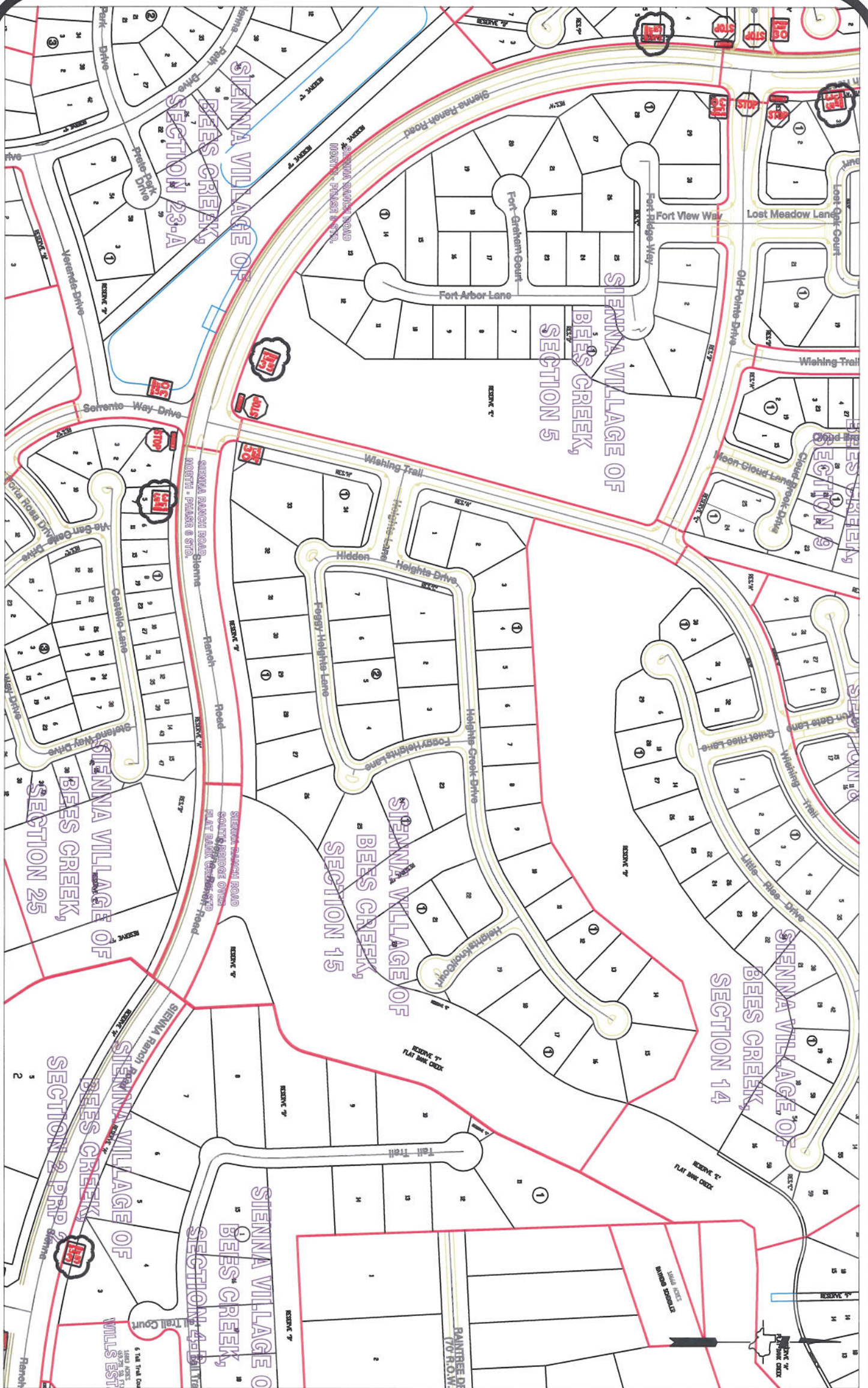
Date: 1-2-14

Scale

1" = 300'-0"

Sienna Ranch Road
Revised Control Map and
Traffic Sign Layout

Fort Bend County Engineering Dept.
1124 Blume Road
Rosenberg, Texas 77471



Note:

Sheet 3 of 5

The purpose of this traffic control plan is to reduce the speed limit from 45 M.P.H. to 35 M.P.H. on Sienna Ranch Road as indicated on the drawing.

Drawn By: L. Brdecka

Date: 1-2-14

Approved By: Rick Staigle, P.E.

Date: 1-2-14

Scale

1" = 300'-0"

Sienna Ranch Road
Revised Control Map and
Traffic Sign Layout

Fort Bend County Engineering Dept.
1124 Blume Road
Rosenberg, Texas 77471



Note: Sheet 4 of 5

The purpose of this traffic control plan is to reduce the speed limit from 45 M.P.H. to 35 M.P.H. on Sienna Ranch Road as indicated on the drawing.

Drawn By: L. Brdecka
Date: 1-2-14
Approved By: Rick Staigle, P.E.
Date: 1-2-14
Scale: 1" = 300'-0"

Sienna Ranch Road
Revised Control Map and
Traffic Sign Layout

Fort Bend County Engineering Dept.
1124 Blume Road
Rosenberg, Texas 77471

