



FORT BEND COUNTY ENGINEERING

Fort Bend County, Texas

Richard W. Stolleis, P.E.
County Engineer

November 6, 2013

Commissioner W. A. "Andy" Meyers
Fort Bend County Precinct 3
22333 Grand Corner Drive
Katy, Texas 77494

**RE: Long Meadow Farms, Section 22 - Traffic Control Plan
Long Meadow Farms, Section 23**

Dear Commissioner:

Fort Bend County Engineering has completed and recommends approval of the traffic control plans for the above referenced subdivisions. The public hearing date for acceptance of the plans is being scheduled.

A copy of the traffic control plan is attached for your review. If you should have any questions, please give me a call.

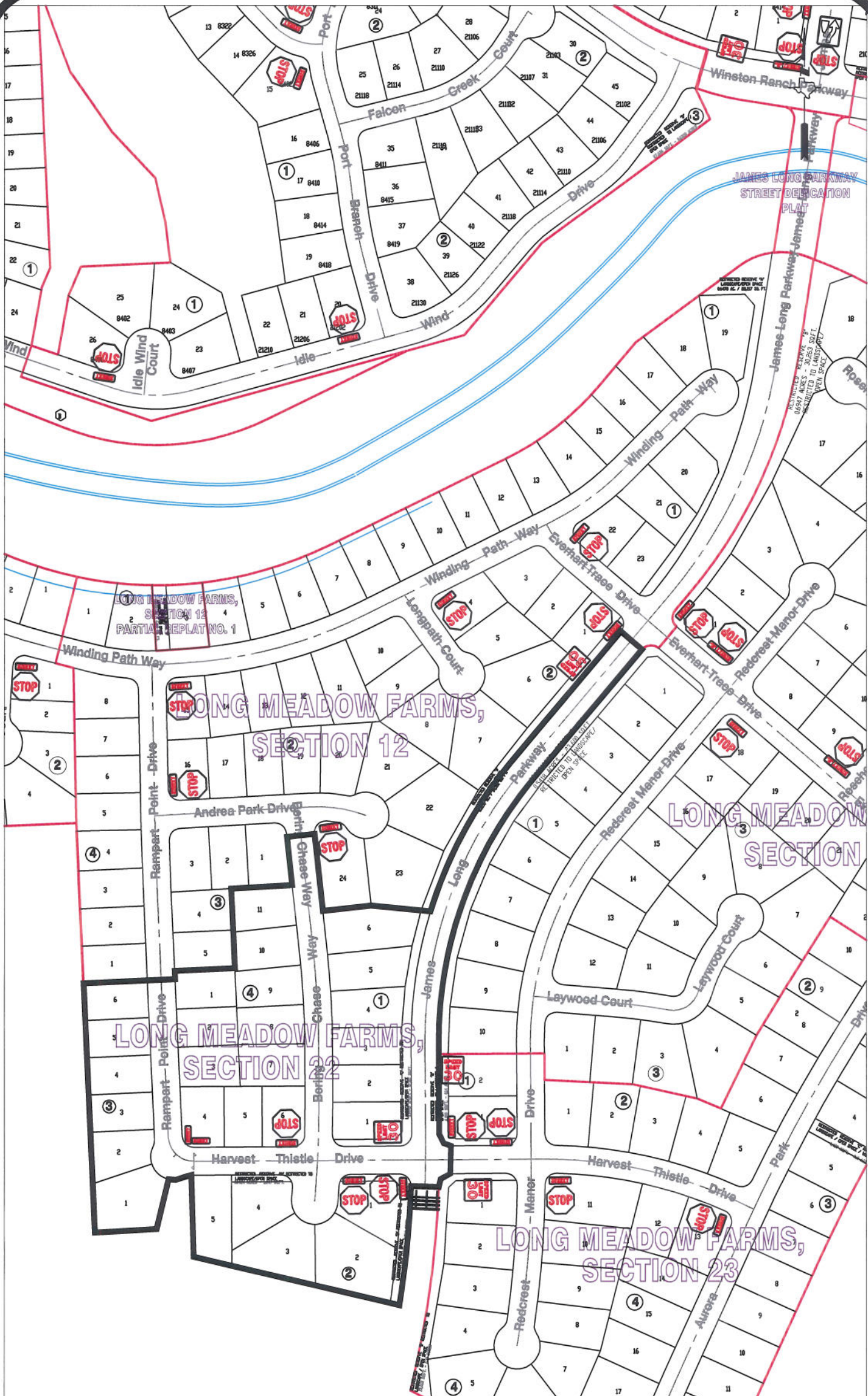
Sincerely,

A handwritten signature in dark ink, appearing to read "Nathan D. Hatcher", is written over the word "Sincerely,".

Nathan D. Hatcher
Assistant to County Engineer

NDH/mjs

cc: Judge Robert E. Hebert, County Judge
Marc Grant - FBC Road & Bridge
Marc Grant - Signage Department
File



Note:

The purpose of this traffic control plan is to establish traffic control for Long Meadow Farms, Section 22.

Drawn By: L. Brdecka

Date: 11-4-13

Approved By: Nathan Hatpner

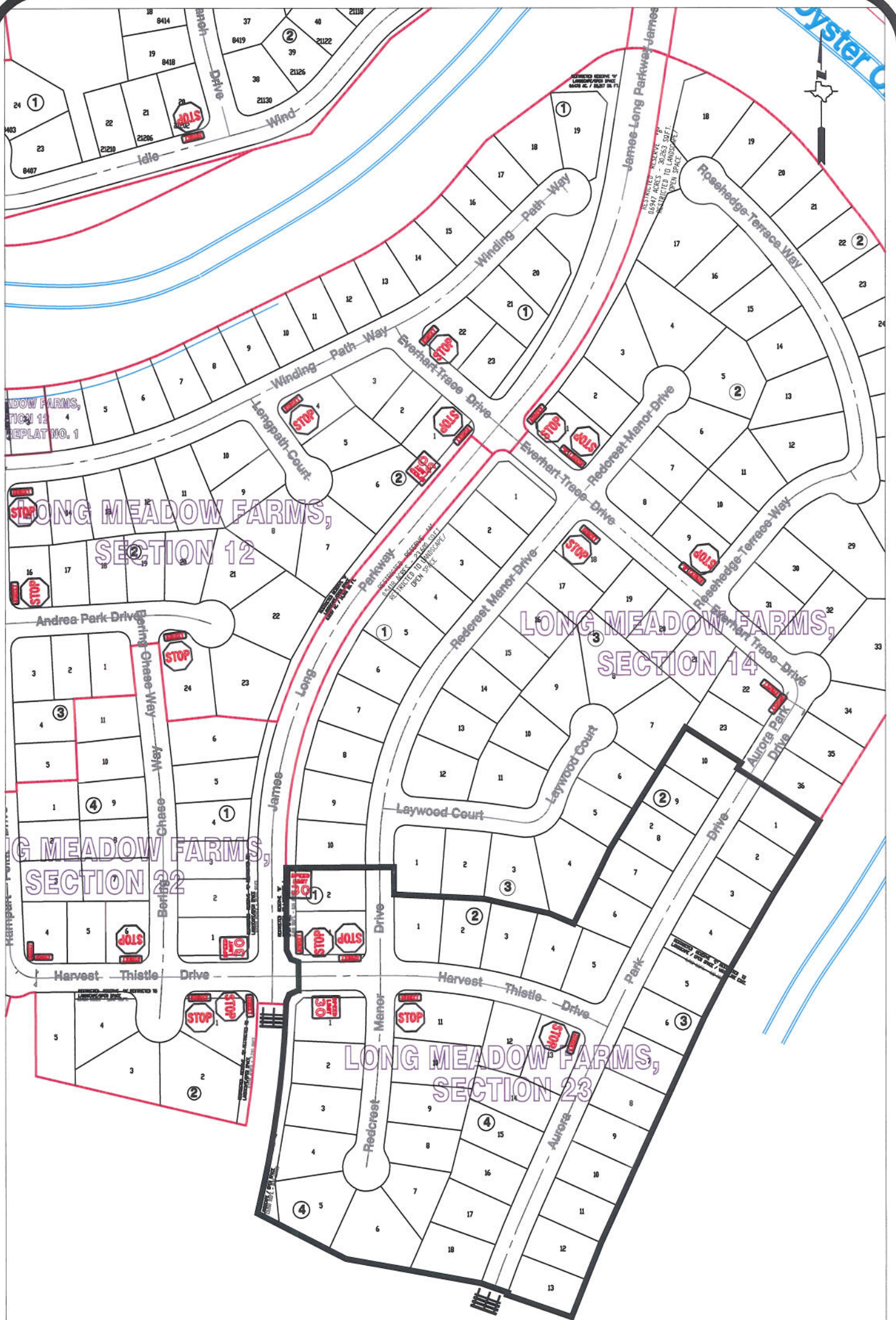
Date: 11-4-13

Scale

1" = 300'-0"

**Long Meadow Farms
Section 22
Control Map and Traffic Sign
Layout**

Fort Bend County Engineering Dept.
1124 Blume Road
Rosenberg, Texas 77471



Note:

The purpose of this traffic control plan is to establish traffic control for Long Meadow Farms, Section 23.

Drawn By: L. Brdecka

Date: 11-4-13

Approved By: Nathan Hatcher

Date: 11-4-13

Scale

1" = 300'-0"

**Long Meadow Farms
Section 23
Control Map and Traffic Sign
Layout**

Fort Bend County Engineering Dept.
1124 Blume Road
Rosenberg, Texas 77471