



## FORT BEND COUNTY ENGINEERING

Fort Bend County, Texas

Richard W. Stolleis, P.E.  
County Engineer

November 18, 2013

Commissioner W. A. "Andy" Meyers  
Fort Bend County Precinct 3  
22333 Grand Corner Drive  
Katy, Texas 77494

**RE: Traffic Control Plan, Lakemont, Section 4 Subdivision - Somerset Hill Lane  
at Lakemont Bend Drive to add "No Parking Any Time" signs**

Dear Commissioner Meyers:

The Fort Bend County Engineering Department has conducted a traffic study at the request of Lakemont Homeowners Association for the referenced. The request was to add "No Parking Any Time" signs along Somerset Hills Lane. Parents are parking on both sides of Somerset Hills Lane. The Engineering Department is recommending the "No Parking Any Time" signs be placed on the approach side of the roadway.

If there are no objections to the plan, a public hearing will be scheduled on the next available Commissioner's Court agenda.

A copy of the traffic control plan is attached for your review. If you should have any questions, please give me a call.

Sincerely,

A handwritten signature in black ink, appearing to read "Nathan D. Hatcher", is written over a faint, larger signature.

Nathan D. Hatcher  
Assistant to County Engineer

NDH/mjs

cc: Judge Robert E. Hebert, County Judge  
Marc Grant - FBC Road & Bridge  
Marc Grant - Signage Department  
Ms. Diane Perkins, Lakemont Homeowners Assn. [dperkins45@hotmail.com](mailto:dperkins45@hotmail.com)  
File





RESTRICTED  
RESERVE "C"  
(RESTRICTED TO  
COMMERCIAL USES ONLY)

10.310 ACRE  
449,087 SQ. FT.

RESTRICTED TO DRILL SITE  
5.230 AC. 227,841 SQ.FT.

RESTRICTED  
RESERVE "B"  
RESTRICTED TO COMMERCIAL  
4.450 AC. 193,836 SQ.FT.

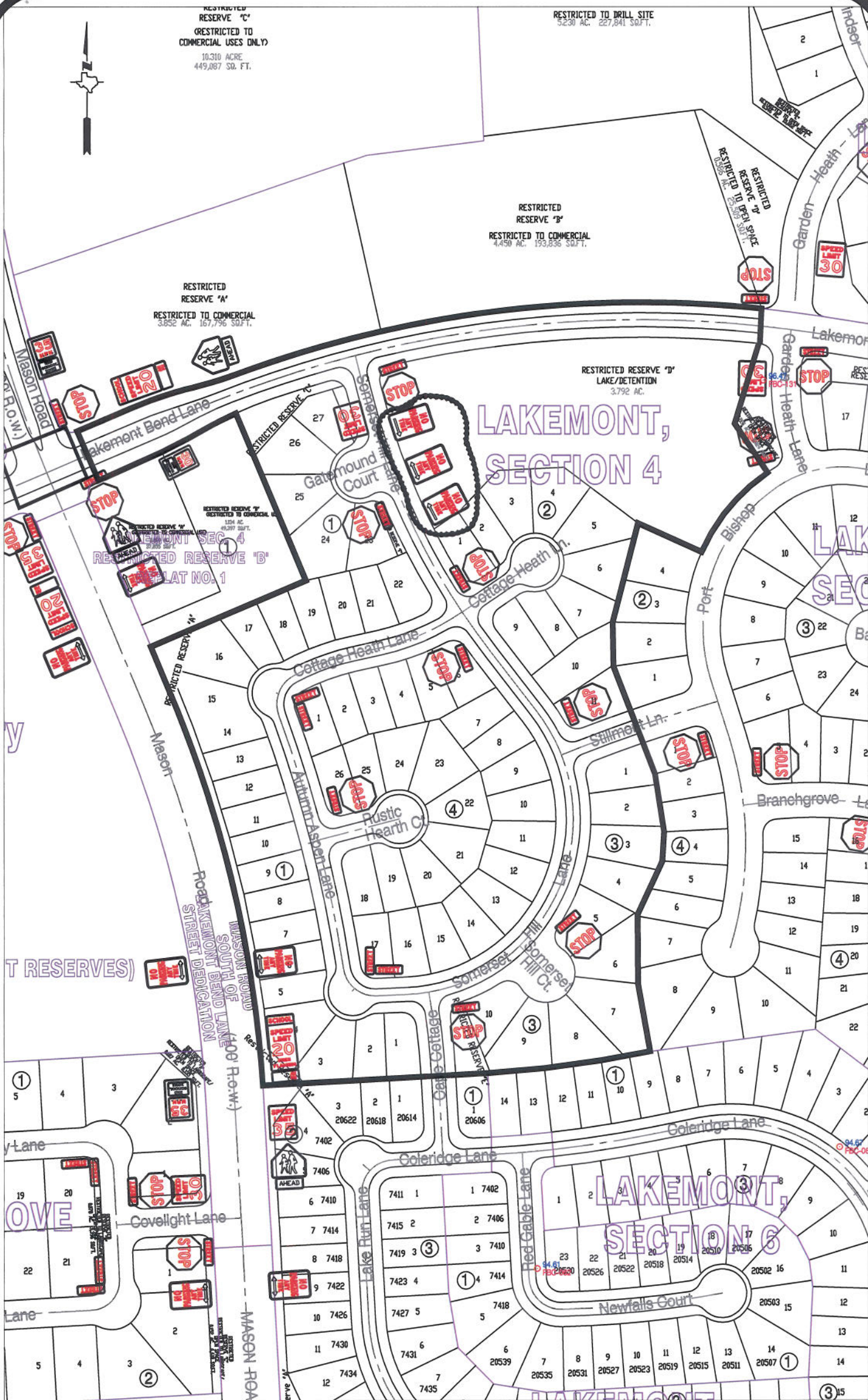
RESTRICTED  
RESERVE "A"  
RESTRICTED TO COMMERCIAL  
3.852 AC. 167,796 SQ.FT.

RESTRICTED RESERVE "D"  
LAKE/DETENTION  
3.792 AC.

## LAKEMONT, SECTION 4

RESTRICTED RESERVE "B"  
PLAT NO. 1

## LAKEMONT, SECTION 6



### Note:

The purpose of this traffic control plan is to revise traffic control for Lakemont, Section 4 as indicated on the drawing.

Drawn By: L. Brdecka

Date: 11-18-13

Approved By: Nathan Hatcher

Date: 11-18-13

Scale

1" = 200'-0"

Lakemont, Section 4  
Revised Control Map  
and  
Traffic Sign Layout

Fort Bend County Engineering Dept.  
1124 Blume Road  
Rosenberg, Texas 77471