



FORT BEND COUNTY ENGINEERING

Fort Bend County, Texas

Richard W. Stolleis, P.E.
County Engineer

October 14, 2013

Commissioner James Patterson
Fort Bend County Precinct 4
12919 Dairy Ashford Road
Sugar Land, Texas 77478

**RE: Adolphus Elementary School (Lamar CISD)- Winston Ranch Parkway at West Bellfort
(Request to lengthen the school zone) Updated Traffic/Safety Study**

Dear Commissioner Patterson:

This letter is in response to a request to lengthen the school zone and providing additional signs on West Bellfort near Adolphus Elementary located on Winston Ranch Parkway. Additional information has been provided by residents related to routing of children from the school to the intersection. It was also requested this school zone be evaluated in relation to other school zones within Fort Bend County.

There are currently 43 school zones for elementary schools along Fort Bend County roadways:

- 4 school zones do not have an intersection within the zone
- 24 school zones have an intersection with all-way stop or traffic signal control of an intersection
- 15 school zones have intersections that are not all-way stop or signal controlled (9 on four-lane arterials, 4 on collector or two lane roadways, 2 on dead-end streets)

The majority of the existing school zones have an all-way stop or signalized intersection within the school zone. Some of these were developed under an older version of the Texas Manual on Uniform Traffic Control Devices (TMUTCD) or the all-way stop control or traffic signal may have been installed after the school zone had been installed. No other locations were found to have an all-way stop or signal control of an intersection adjacent to the school property that was not within a school zone. It has not been the policy of Fort Bend County to remove school zones on a section of roadway if all-way stop control or a traffic signal is installed after a school zone has been established.

Based on a site review of the school signing for Adolphus Elementary and other elementary schools within Fort Bend County, the Fort Bend County Engineering Department will be developing the school zone to include the intersection. The attached traffic control plan reflects the changes.

Sincerely,

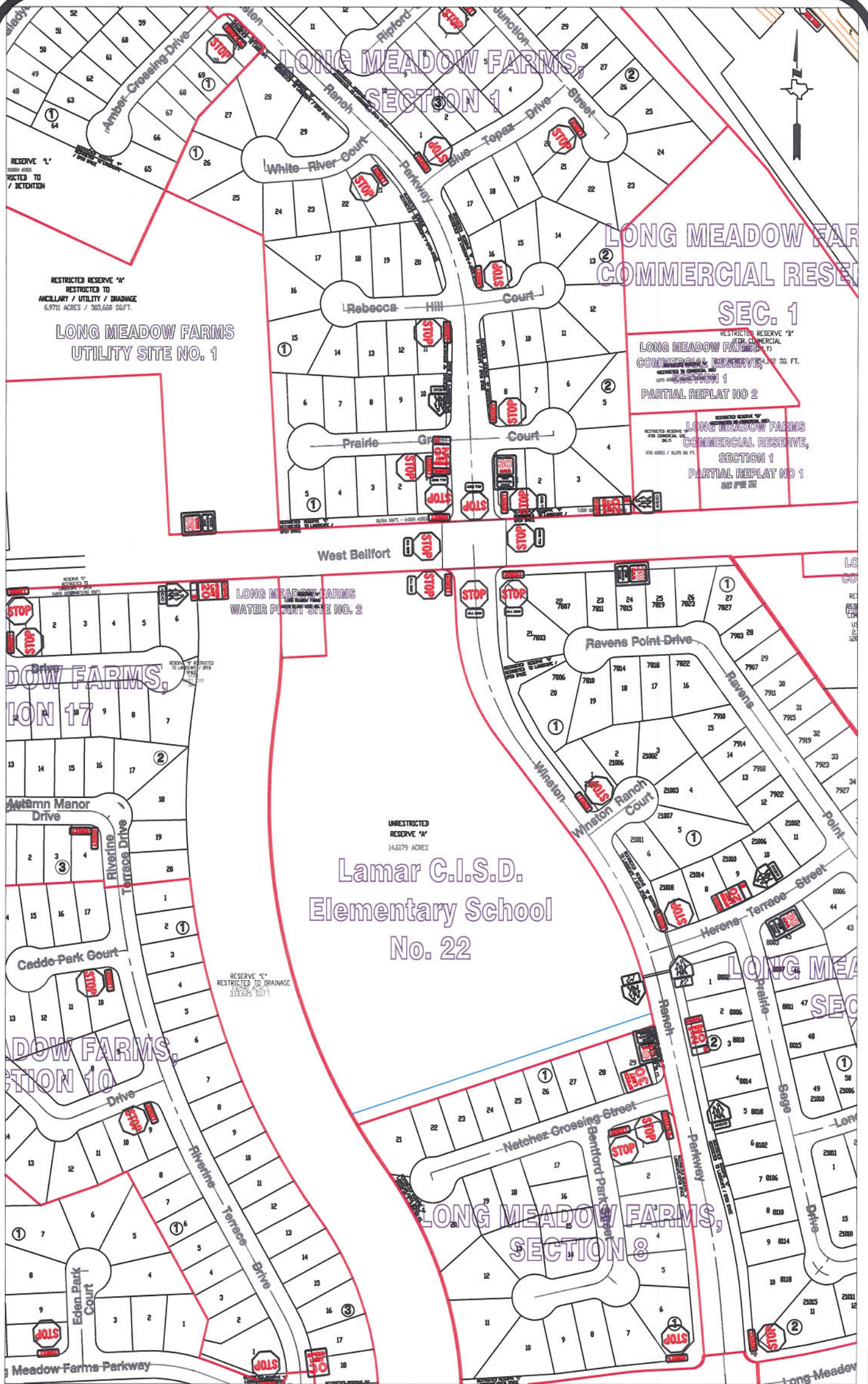
A handwritten signature in black ink that reads "Rick J. Staigle, PE, PTOE".

Rick J. Staigle, PE, PTOE
First Assistant County Engineer

cc: Judge Robert E. Hebert, County Judge
Marc Grant - FBC Road & Bridge
Marc Grant - Signage Department
Ms. Susan Alleman, Traffic Engineers, Inc., 8323 Southwest Freeway, Suite 200, Houston, TX 77074
File

P.O. Box 1449 • 1124 Blume Road • Rosenberg, Texas 77471 • (281) 633-7500 • Fax (281) 342-7366

I:\WPDATA\LETTERS\TRAFSTUD\Adolphus Elem_Winston Ranch Pkwy_W Bellfort_1013.doc



Note:

The purpose of this traffic control plan is to revise traffic control for Long Meadow Farms L.C.I.S.D. Elementary School as indicated on the drawing.

Drawn By: L. Brdecka

Date: 10-14-13

Approved By: Rick Staigle, P.E.

Date: 10-14-13

Scale

1" = 300'-0"

**Long Meadow Farms
L.C.I.S.D. Elementary School
Control Map and Traffic Sign
Layout**

Fort Bend County Engineering Dept.
1124 Blume Road
Rosenberg, Texas 77471