

PLAT RECORDING SHEET

PLAT NAME: Avalon at Riverstone, Section 5

PLAT NO: _____

ACREAGE: 30.1045

LEAGUE: William Little Survey

ABSTRACT NUMBER: 54

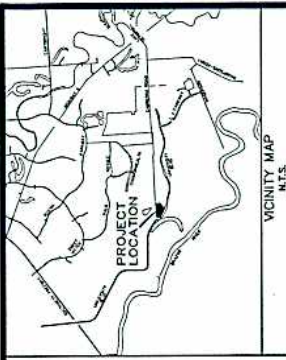
NUMBER OF BLOCKS: 2

NUMBER OF LOTS: 63

NUMBER OF RESERVES: 6

OWNERS: Taylor Morrison of Texas, Inc.

(DEPUTY CLERK)



RESERVE NO.	ACRES	AREA	PERCENTAGE	RESERVE NO.	ACRES	AREA	PERCENTAGE
1	1.00	1.00	3.17	21	1.00	1.00	3.17
2	1.00	1.00	3.17	22	1.00	1.00	3.17
3	1.00	1.00	3.17	23	1.00	1.00	3.17
4	1.00	1.00	3.17	24	1.00	1.00	3.17
5	1.00	1.00	3.17	25	1.00	1.00	3.17
6	1.00	1.00	3.17	26	1.00	1.00	3.17
7	1.00	1.00	3.17	27	1.00	1.00	3.17
8	1.00	1.00	3.17	28	1.00	1.00	3.17
9	1.00	1.00	3.17	29	1.00	1.00	3.17
10	1.00	1.00	3.17	30	1.00	1.00	3.17
11	1.00	1.00	3.17	31	1.00	1.00	3.17
12	1.00	1.00	3.17	32	1.00	1.00	3.17
13	1.00	1.00	3.17	33	1.00	1.00	3.17
14	1.00	1.00	3.17	34	1.00	1.00	3.17
15	1.00	1.00	3.17	35	1.00	1.00	3.17
16	1.00	1.00	3.17	36	1.00	1.00	3.17
17	1.00	1.00	3.17	37	1.00	1.00	3.17
18	1.00	1.00	3.17	38	1.00	1.00	3.17
19	1.00	1.00	3.17	39	1.00	1.00	3.17
20	1.00	1.00	3.17	40	1.00	1.00	3.17
21	1.00	1.00	3.17	41	1.00	1.00	3.17
22	1.00	1.00	3.17	42	1.00	1.00	3.17
23	1.00	1.00	3.17	43	1.00	1.00	3.17
24	1.00	1.00	3.17	44	1.00	1.00	3.17
25	1.00	1.00	3.17	45	1.00	1.00	3.17
26	1.00	1.00	3.17	46	1.00	1.00	3.17
27	1.00	1.00	3.17	47	1.00	1.00	3.17
28	1.00	1.00	3.17	48	1.00	1.00	3.17
29	1.00	1.00	3.17	49	1.00	1.00	3.17
30	1.00	1.00	3.17	50	1.00	1.00	3.17
31	1.00	1.00	3.17	51	1.00	1.00	3.17
32	1.00	1.00	3.17	52	1.00	1.00	3.17
33	1.00	1.00	3.17	53	1.00	1.00	3.17
34	1.00	1.00	3.17	54	1.00	1.00	3.17
35	1.00	1.00	3.17	55	1.00	1.00	3.17
36	1.00	1.00	3.17	56	1.00	1.00	3.17
37	1.00	1.00	3.17	57	1.00	1.00	3.17
38	1.00	1.00	3.17	58	1.00	1.00	3.17
39	1.00	1.00	3.17	59	1.00	1.00	3.17
40	1.00	1.00	3.17	60	1.00	1.00	3.17
41	1.00	1.00	3.17	61	1.00	1.00	3.17
42	1.00	1.00	3.17	62	1.00	1.00	3.17
43	1.00	1.00	3.17	63	1.00	1.00	3.17
44	1.00	1.00	3.17	64	1.00	1.00	3.17
45	1.00	1.00	3.17	65	1.00	1.00	3.17
46	1.00	1.00	3.17	66	1.00	1.00	3.17
47	1.00	1.00	3.17	67	1.00	1.00	3.17
48	1.00	1.00	3.17	68	1.00	1.00	3.17
49	1.00	1.00	3.17	69	1.00	1.00	3.17
50	1.00	1.00	3.17	70	1.00	1.00	3.17
51	1.00	1.00	3.17	71	1.00	1.00	3.17
52	1.00	1.00	3.17	72	1.00	1.00	3.17
53	1.00	1.00	3.17	73	1.00	1.00	3.17
54	1.00	1.00	3.17	74	1.00	1.00	3.17
55	1.00	1.00	3.17	75	1.00	1.00	3.17
56	1.00	1.00	3.17	76	1.00	1.00	3.17
57	1.00	1.00	3.17	77	1.00	1.00	3.17
58	1.00	1.00	3.17	78	1.00	1.00	3.17
59	1.00	1.00	3.17	79	1.00	1.00	3.17
60	1.00	1.00	3.17	80	1.00	1.00	3.17
61	1.00	1.00	3.17	81	1.00	1.00	3.17
62	1.00	1.00	3.17	82	1.00	1.00	3.17
63	1.00	1.00	3.17	83	1.00	1.00	3.17
64	1.00	1.00	3.17	84	1.00	1.00	3.17
65	1.00	1.00	3.17	85	1.00	1.00	3.17
66	1.00	1.00	3.17	86	1.00	1.00	3.17
67	1.00	1.00	3.17	87	1.00	1.00	3.17
68	1.00	1.00	3.17	88	1.00	1.00	3.17
69	1.00	1.00	3.17	89	1.00	1.00	3.17
70	1.00	1.00	3.17	90	1.00	1.00	3.17
71	1.00	1.00	3.17	91	1.00	1.00	3.17
72	1.00	1.00	3.17	92	1.00	1.00	3.17
73	1.00	1.00	3.17	93	1.00	1.00	3.17
74	1.00	1.00	3.17	94	1.00	1.00	3.17
75	1.00	1.00	3.17	95	1.00	1.00	3.17
76	1.00	1.00	3.17	96	1.00	1.00	3.17
77	1.00	1.00	3.17	97	1.00	1.00	3.17
78	1.00	1.00	3.17	98	1.00	1.00	3.17
79	1.00	1.00	3.17	99	1.00	1.00	3.17
80	1.00	1.00	3.17	100	1.00	1.00	3.17

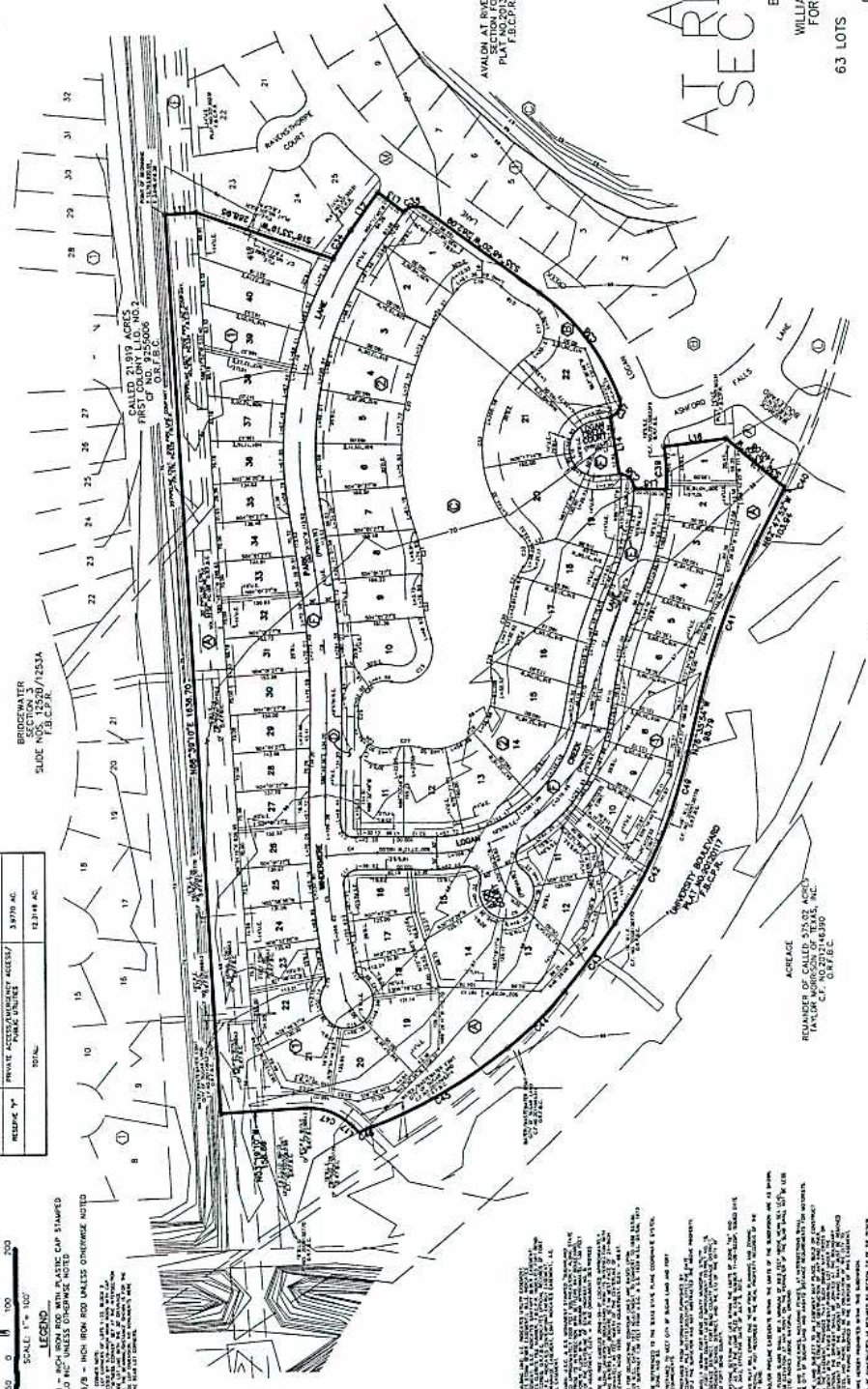
AT RIVERSTONE SECTION FIVE

BEING 30.1045 ACRES
LOCALITY SURVEY
WILLIAM MORRISON SURVEY A-54,
FORT BEND COUNTY, TEXAS
6.3 LOTS 2 BLOCKS 6 RESERVES

DATE: AUGUST, 2013
OWNER:
TAYLOR MORRISON OF TEXAS INC.
5393 W. HAWKSHORN AVENUE, STE. 190
DALLAS, TEXAS 75247
PHONE: 214-591-3225

PLANNER:
KERRY R. GILBERT & ASSOCIATES, INC.
Land Planning Consultants
2307 CHERRY STREET, SUITE 4-200
DALLAS, TEXAS 75228
(214) 579-1240

ENGINEER/DESIGNER:
Costello, Inc.
Engineers and Surveyors
Mark Costello, P.E.
1011 W. 17th Street, Suite 100
Fort Worth, TX 76102
REGISTRATION NO. 199



RESERVE TABLE	ACRES
RESERVE "A"	4.0275 AC.
RESERVE "B"	0.7111 AC.
RESERVE "C"	3.2875 AC.
RESERVE "D"	0.2789 AC.
RESERVE "E"	0.8088 AC.
RESERVE "F"	3.9775 AC.
RESERVE "G"	12.314 AC.
TOTAL:	29.4067 AC.

1. ALL DIMENSIONS ARE IN FEET UNLESS OTHERWISE NOTED.
2. THE CALLED "SECTION FIVE" OF THE WILLIAM MORRISON SURVEY A-54, FORT BEND COUNTY, TEXAS IS BEING SUBDIVIDED INTO 32 LOTS, 2 BLOCKS AND 6 RESERVES.
3. THE LOTS, BLOCKS AND RESERVES ARE BEING SUBDIVIDED INTO 6.3 LOTS, 2 BLOCKS AND 6 RESERVES.
4. THE LOTS, BLOCKS AND RESERVES ARE BEING SUBDIVIDED INTO 6.3 LOTS, 2 BLOCKS AND 6 RESERVES.
5. THE LOTS, BLOCKS AND RESERVES ARE BEING SUBDIVIDED INTO 6.3 LOTS, 2 BLOCKS AND 6 RESERVES.
6. THE LOTS, BLOCKS AND RESERVES ARE BEING SUBDIVIDED INTO 6.3 LOTS, 2 BLOCKS AND 6 RESERVES.
7. THE LOTS, BLOCKS AND RESERVES ARE BEING SUBDIVIDED INTO 6.3 LOTS, 2 BLOCKS AND 6 RESERVES.
8. THE LOTS, BLOCKS AND RESERVES ARE BEING SUBDIVIDED INTO 6.3 LOTS, 2 BLOCKS AND 6 RESERVES.
9. THE LOTS, BLOCKS AND RESERVES ARE BEING SUBDIVIDED INTO 6.3 LOTS, 2 BLOCKS AND 6 RESERVES.
10. THE LOTS, BLOCKS AND RESERVES ARE BEING SUBDIVIDED INTO 6.3 LOTS, 2 BLOCKS AND 6 RESERVES.
11. THE LOTS, BLOCKS AND RESERVES ARE BEING SUBDIVIDED INTO 6.3 LOTS, 2 BLOCKS AND 6 RESERVES.
12. THE LOTS, BLOCKS AND RESERVES ARE BEING SUBDIVIDED INTO 6.3 LOTS, 2 BLOCKS AND 6 RESERVES.
13. THE LOTS, BLOCKS AND RESERVES ARE BEING SUBDIVIDED INTO 6.3 LOTS, 2 BLOCKS AND 6 RESERVES.
14. THE LOTS, BLOCKS AND RESERVES ARE BEING SUBDIVIDED INTO 6.3 LOTS, 2 BLOCKS AND 6 RESERVES.
15. THE LOTS, BLOCKS AND RESERVES ARE BEING SUBDIVIDED INTO 6.3 LOTS, 2 BLOCKS AND 6 RESERVES.
16. THE LOTS, BLOCKS AND RESERVES ARE BEING SUBDIVIDED INTO 6.3 LOTS, 2 BLOCKS AND 6 RESERVES.
17. THE LOTS, BLOCKS AND RESERVES ARE BEING SUBDIVIDED INTO 6.3 LOTS, 2 BLOCKS AND 6 RESERVES.
18. THE LOTS, BLOCKS AND RESERVES ARE BEING SUBDIVIDED INTO 6.3 LOTS, 2 BLOCKS AND 6 RESERVES.
19. THE LOTS, BLOCKS AND RESERVES ARE BEING SUBDIVIDED INTO 6.3 LOTS, 2 BLOCKS AND 6 RESERVES.
20. THE LOTS, BLOCKS AND RESERVES ARE BEING SUBDIVIDED INTO 6.3 LOTS, 2 BLOCKS AND 6 RESERVES.
21. THE LOTS, BLOCKS AND RESERVES ARE BEING SUBDIVIDED INTO 6.3 LOTS, 2 BLOCKS AND 6 RESERVES.
22. THE LOTS, BLOCKS AND RESERVES ARE BEING SUBDIVIDED INTO 6.3 LOTS, 2 BLOCKS AND 6 RESERVES.
23. THE LOTS, BLOCKS AND RESERVES ARE BEING SUBDIVIDED INTO 6.3 LOTS, 2 BLOCKS AND 6 RESERVES.
24. THE LOTS, BLOCKS AND RESERVES ARE BEING SUBDIVIDED INTO 6.3 LOTS, 2 BLOCKS AND 6 RESERVES.
25. THE LOTS, BLOCKS AND RESERVES ARE BEING SUBDIVIDED INTO 6.3 LOTS, 2 BLOCKS AND 6 RESERVES.
26. THE LOTS, BLOCKS AND RESERVES ARE BEING SUBDIVIDED INTO 6.3 LOTS, 2 BLOCKS AND 6 RESERVES.
27. THE LOTS, BLOCKS AND RESERVES ARE BEING SUBDIVIDED INTO 6.3 LOTS, 2 BLOCKS AND 6 RESERVES.
28. THE LOTS, BLOCKS AND RESERVES ARE BEING SUBDIVIDED INTO 6.3 LOTS, 2 BLOCKS AND 6 RESERVES.
29. THE LOTS, BLOCKS AND RESERVES ARE BEING SUBDIVIDED INTO 6.3 LOTS, 2 BLOCKS AND 6 RESERVES.
30. THE LOTS, BLOCKS AND RESERVES ARE BEING SUBDIVIDED INTO 6.3 LOTS, 2 BLOCKS AND 6 RESERVES.
31. THE LOTS, BLOCKS AND RESERVES ARE BEING SUBDIVIDED INTO 6.3 LOTS, 2 BLOCKS AND 6 RESERVES.
32. THE LOTS, BLOCKS AND RESERVES ARE BEING SUBDIVIDED INTO 6.3 LOTS, 2 BLOCKS AND 6 RESERVES.

RESERVE NO.	ACRES
1	4.0275
2	0.7111
3	3.2875
4	0.2789
5	0.8088
6	3.9775
7	12.314
8	12.314
9	12.314
10	12.314
11	12.314
12	12.314
13	12.314
14	12.314
15	12.314
16	12.314
17	12.314
18	12.314
19	12.314
20	12.314
21	12.314
22	12.314
23	12.314
24	12.314
25	12.314
26	12.314
27	12.314
28	12.314
29	12.314
30	12.314
31	12.314
32	12.314