



FORT BEND COUNTY ENGINEERING

Fort Bend County, Texas

Richard W. Stolleis, P.E.
County Engineer

September 18, 2013

Commissioner W. A. "Andy" Meyers
Fort Bend County Precinct 3
22333 Grand Corner Drive
Katy, Texas 77494

RE: Pin Oak Road at Katy Flewellen/Misty Bend Drive - Traffic/Safety Study

Dear Commissioner Meyers:

The Fort Bend County Engineering Department has completed a traffic study for the referenced intersection. A request was received from a resident of Pin Oak Village for a "No U-turn" sign to be installed southbound on Pin Oak Road.

Existing Conditions:

Pin Oak Road at Katy Flewellen/Misty Bend Drive is a 4-way boulevard intersection. Recently the County installed a permissive yellow flashing arrow, northbound and southbound on Pin Oak Road. The width of the esplanade does not meet the minimum FBC standards for a major thoroughfare due to the extension of Pin Oak Road within the city limits of the City of Katy. Vehicles southbound on Pin Oak Road trying to negotiate making a u-turn from the left turn lane must make a two point turn. The turning radius does not allow for any vehicle to comfortably make the u-turn. This u-turn movement potentially can cause motorists endangering other motorists during the permission left turn feature.

Recommendation:

The Fort Bend County Engineering Department recommends installing a "No U-turn" sign be installed southbound on Pin Oak Road.

The Engineering Department recommends approval of the traffic control plan as submitted. A copy of the traffic control plan is attached for your review. If you should have any questions, please give me a call.

Sincerely,



Nathan D. Hatcher

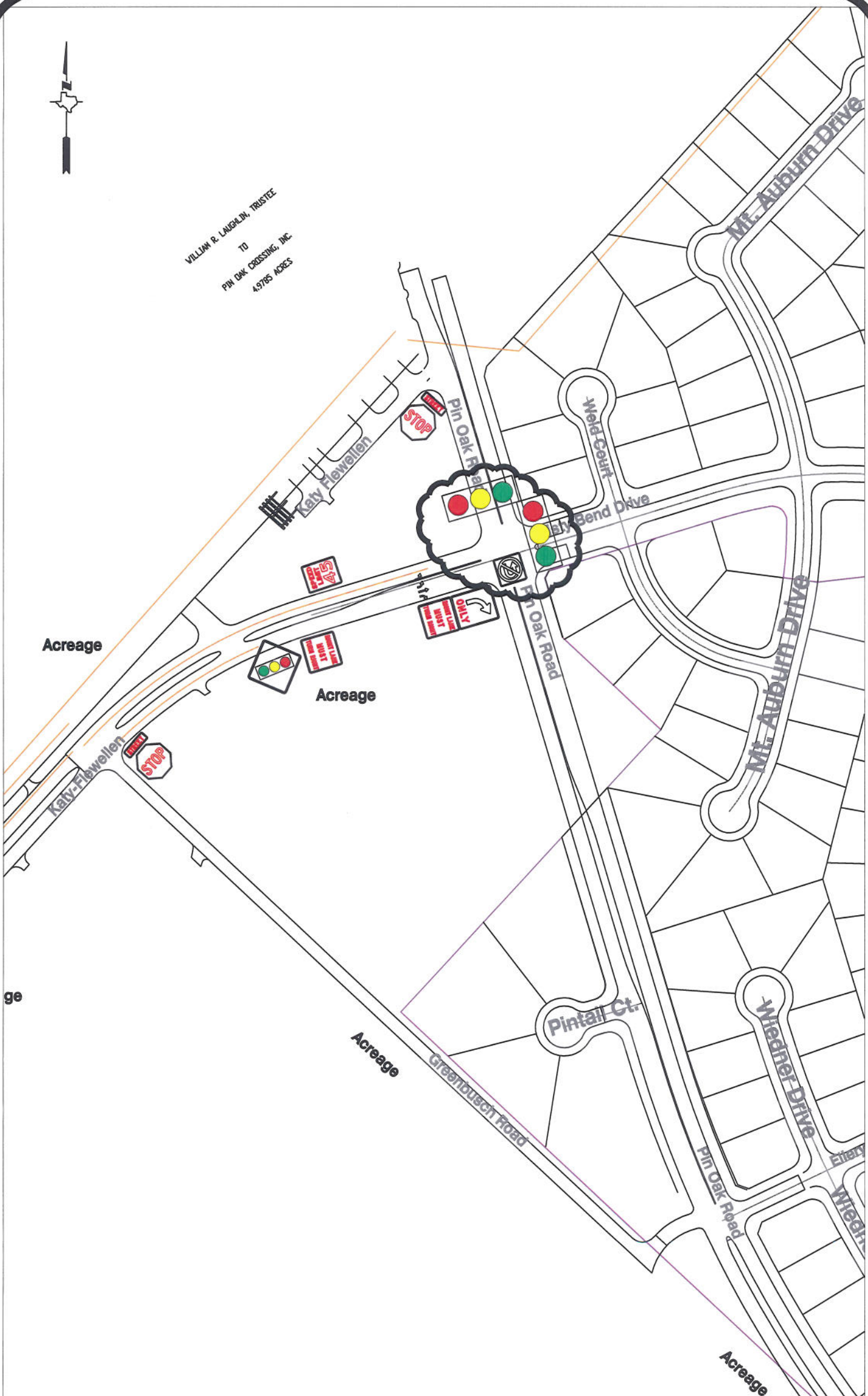
Assistant to County Engineer

NDH/mjs

cc: Judge Robert E. Hebert, County Judge
Marc Grant - FBC Road & Bridge
Marc Grant - Signage Department
File



VILLIAM R. LAUGHLIN, TRUSTEE
TO
PIN OAK CROSSING, INC.
4.9785 ACRES



Note:

The purpose of this traffic control plan is to revise traffic control for Pin Oak Road at Misty Bend Drive with the addition of "No U Turns" (R3-4) sign mounted to the signal mast arm as indicated on the drawing.

Drawn By: L. Brdecka

Date: 9-17-13

Approved By: Nathan Hatcher

Date: 9-17-13

Scale

1" = 200'-0"

**Pin Oak Road at Misty Bend Drive
Control Map and
Traffic Sign Layout**

Fort Bend County Engineering Dept.
1124 Blume Road
Rosenberg, Texas 77471