



FORT BEND COUNTY ENGINEERING

Fort Bend County, Texas

Richard W. Stolleis, P.E.
County Engineer

August 27, 2013

Commissioner James Patterson
Fort Bend County Precinct 4
12919 Dairy Ashford Road
Sugar Land, Texas 77478

**RE: Edgewood at Riverstone, Section 1 - Traffic Control Plan
Silver Grove at Riverstone
Silver Grove at Riverstone, Section 2**

Commissioner Patterson:

Fort Bend County Engineering has completed and recommends approval of the traffic control plans for the above referenced subdivisions. The public hearing date for acceptance of the plans is being scheduled.

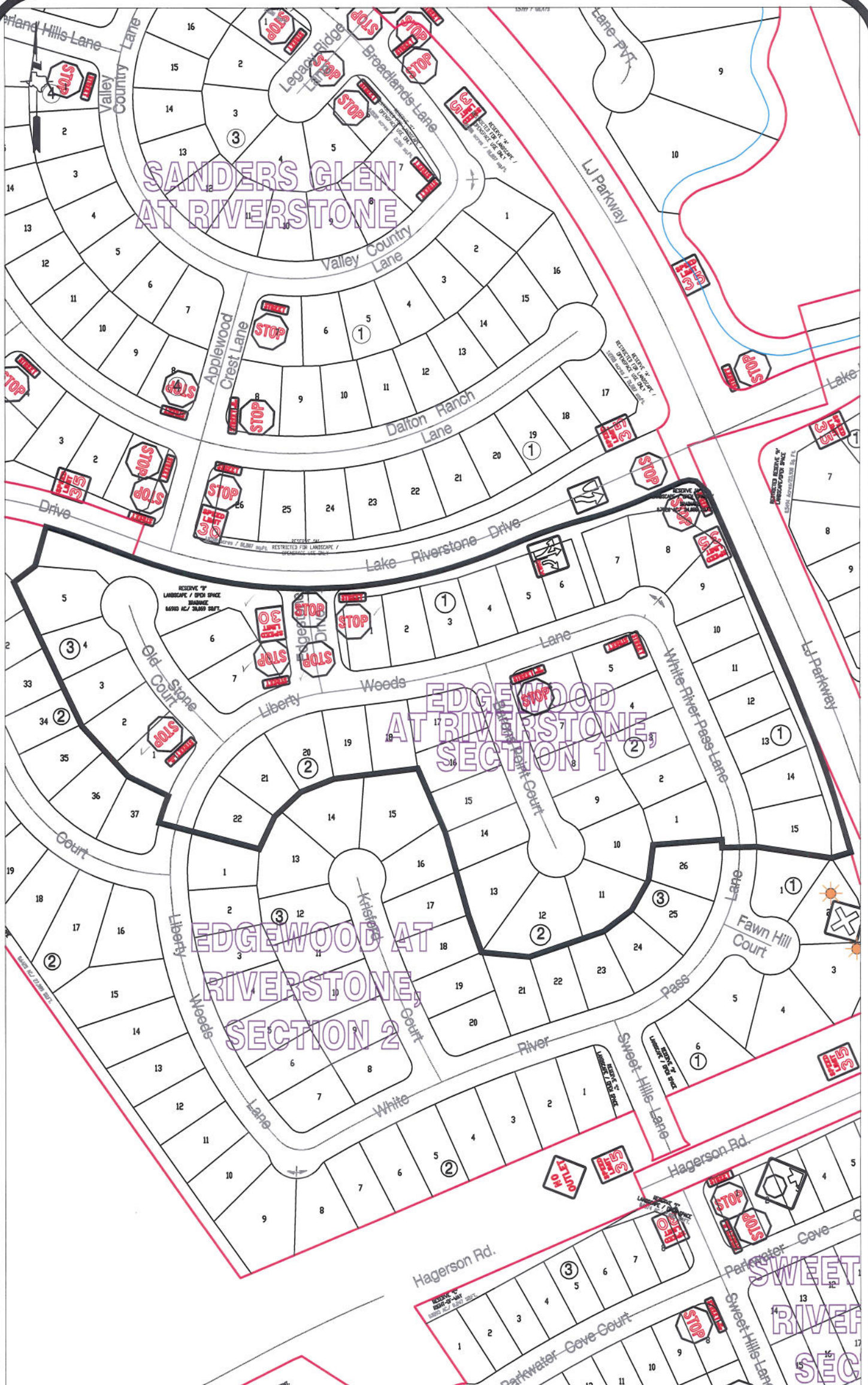
A copy of the traffic control plan is attached for your review. If you should have any questions, please give me a call.

Sincerely,

Steven L. Evans
Assistant to County Engineer

SLE/mjs

cc: Judge Robert E. Hebert, County Judge
Marc Grant - FBC Road & Bridge
Marc Grant - Signage Department
File



Note:

The purpose of this traffic control plan is to establish traffic control for Edgewood at Riverstone, Section 1.

Drawn By: L. Brdecka

Date: 8-27-13

Approved By: Steven L. Evans

Date: 8-27-13

Scale

1" = 200'-0"

Edgewood at Riverstone, Section 1

Control Map

and

Traffic Sign Layout

Fort Bend County Engineering Dept.
1124 Blume Road
Rosenberg, Texas 77471



UNIVERSITY BOULEVARD AND LJ PARKWAY AT RIVERSTONE PHASE 2 STREET DEDICATION PLAT



Note:

The purpose of this traffic control plan is to establish traffic control for Silver Grove at Riverstone.

Drawn By: L. Brdecka

Date: 8-27-13

Approved By: Steven L. Evans

Date: 8-27-13

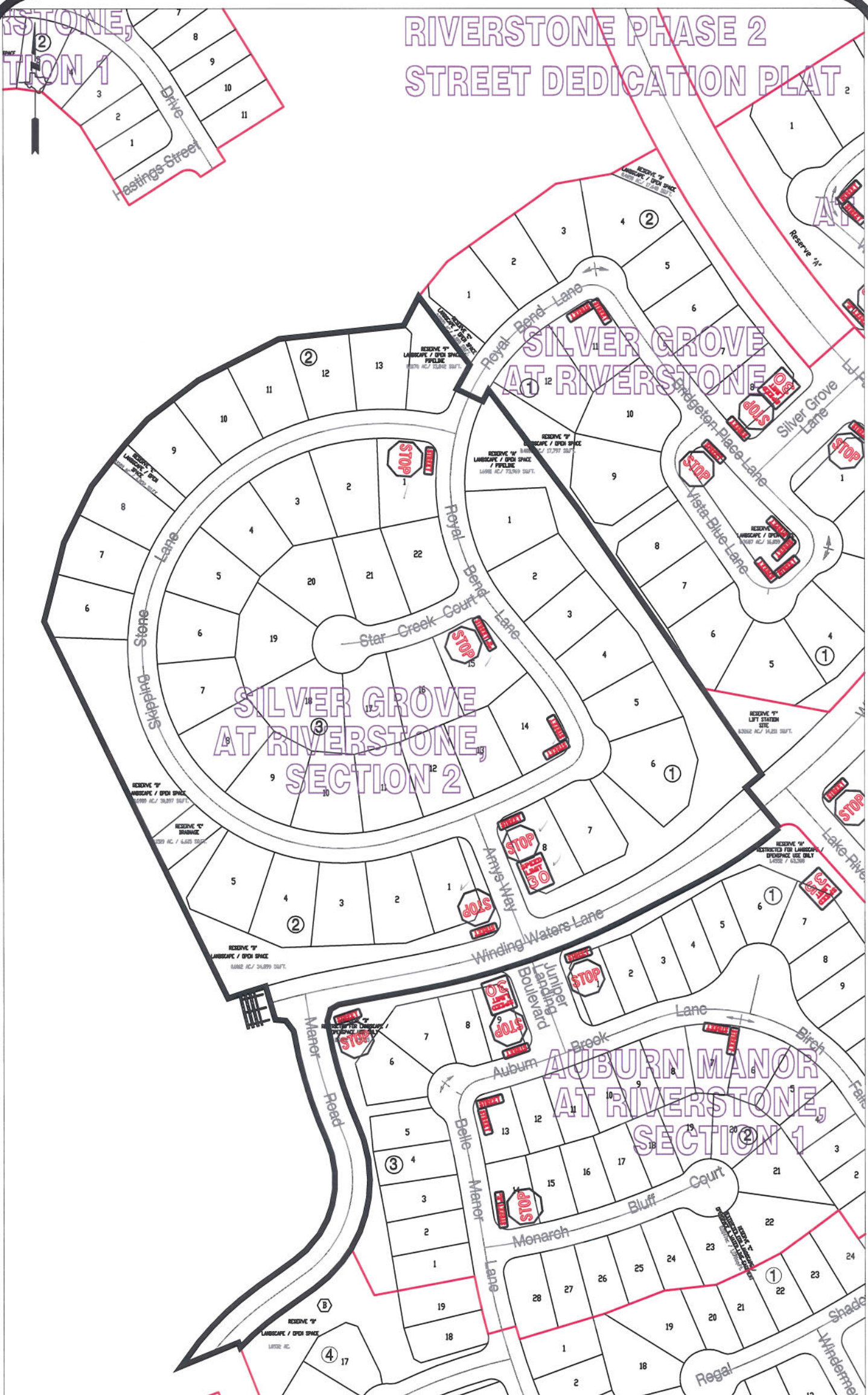
Scale

1" = 200'-0"

Silver Grove at Riverstone Control Map and Traffic Sign Layout

Fort Bend County Engineering Dept.
1124 Blume Road
Rosenberg, Texas 77471

RIVERSTONE PHASE 2
STREET DEDICATION PLAT



Note:

The purpose of this traffic control plan is to establish traffic control for Silver Grove at Riverstone, Section 2.

Drawn By: L. Brdecka

Date: 8-27-13

Approved By: Steven L. Evans

Date: 8-27-13

Scale

1" = 200'-0"

Silver Grove at Riverstone, Section 2
Control Map
and
Traffic Sign Layout

Fort Bend County Engineering Dept.
1124 Blume Road
Rosenberg, Texas 77471