



FORT BEND COUNTY ENGINEERING

Fort Bend County, Texas

Richard W. Stolleis, P.E.
County Engineer

September 18, 2013

Commissioner James Patterson
Fort Bend County Precinct 4
12919 Dairy Ashford Road
Sugar Land, Texas 77478

**RE: Auburn Manor at Riverstone, Section 1 - Traffic Control Plan
Waterside at Riverstone**

Commissioner Patterson:

Fort Bend County Engineering has completed and recommends approval of the traffic control plan for the above referenced subdivision. The public hearing date for acceptance of the plan is being scheduled.

A copy of the traffic control plan is attached for your review. If you should have any questions, please give me a call.

Sincerely,

A handwritten signature in black ink that reads "Steven L. Evans".

Steven L. Evans
Assistant to County Engineer

SLE/mjs

cc: Judge Robert E. Hebert, County Judge
Marc Grant - FBC Road & Bridge
Marc Grant - Signage Department
File



Note:

The purpose of this traffic control plan is to establish traffic control for Auburn Manor at Riverstone, Section 1.

Drawn By: L. Brdecka

Date: 9-18-13

Approved By: Steven L. Evans

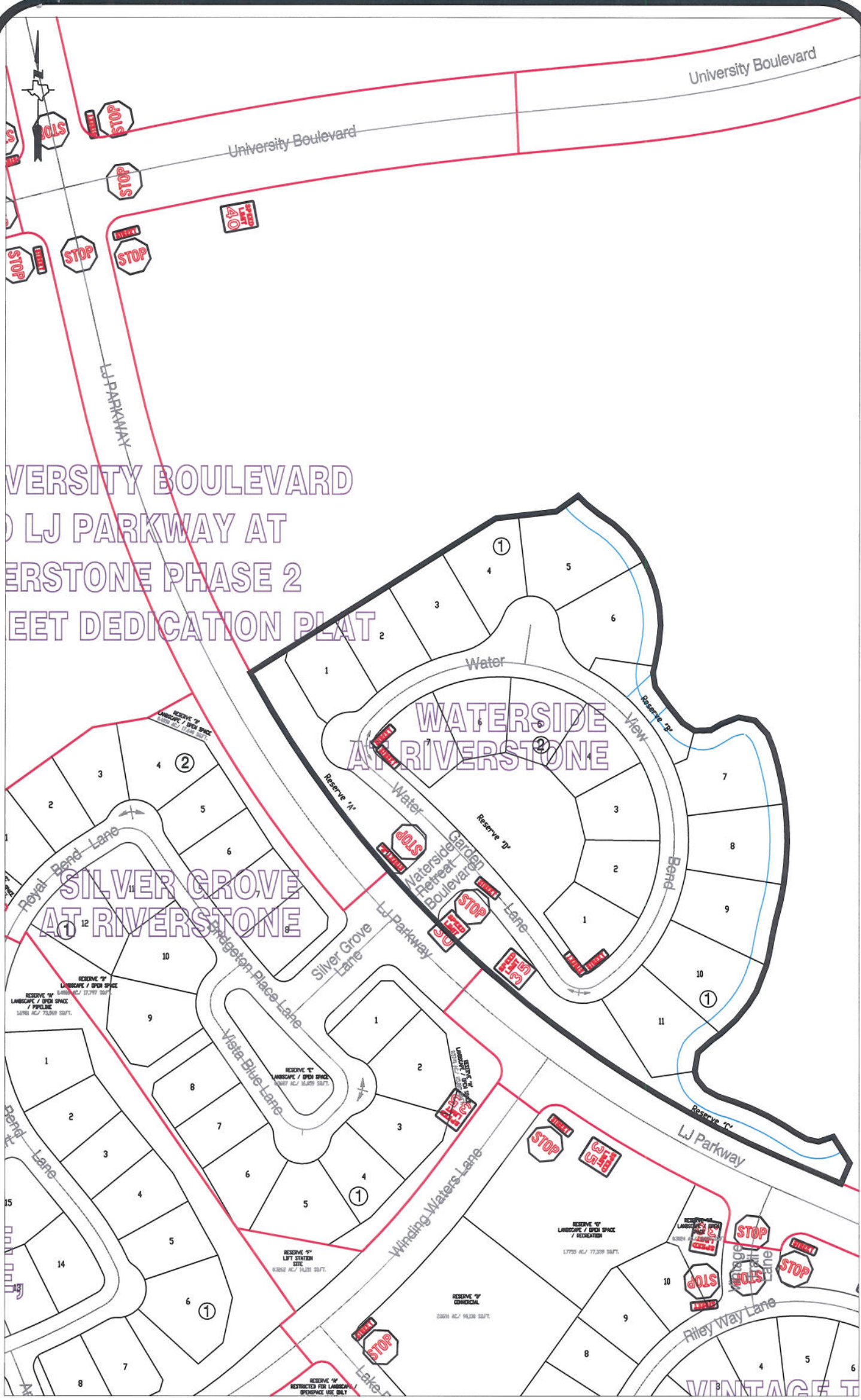
Date: 9-18-13

Scale

1" = 200'-0"

Auburn Manor at Riverstone, Section 1
Control Map
and
Traffic Sign Layout

Fort Bend County Engineering Dept.
1124 Blume Road
Rosenberg, Texas 77471



Note:

The purpose of this traffic control plan is to establish traffic control for Waterside at Riverstone.

Drawn By: L. Brdecka

Date: 8-20-13

Approved By: Steven L. Evans

Date: 8-20-13

Scale

1" = 200'-0"

**Waterside at Riverstone
Control Map
and
Traffic Sign Layout**

Fort Bend County Engineering Dept.
1124 Blume Road
Rosenberg, Texas 77471