



FORT BEND COUNTY ENGINEERING

Fort Bend County, Texas

Richard W. Stolleis, P.E.
County Engineer

July 31, 2013

Commissioner James Patterson
Fort Bend County Precinct 4
12919 Dairy Ashford Road
Sugar Land, Texas 77478

**RE: Sweetbriar at Riverstone - Traffic Control Plan
Sweetbriar at Riverstone, Section 2
The Orchard at Riverstone, Section 2
Shadow Glen at Riverstone, Section 2
LJ Parkway Street Dedication Plat Phase IV**

Dear Commissioner:

Fort Bend County Engineering has completed and recommends approval of the traffic control plans for the above referenced subdivisions. The public hearing date for acceptance of the plans is being scheduled.

A copy of the traffic control plans is attached for your review. If you should have any questions, please give me a call.

Sincerely,

A handwritten signature in black ink, reading "Steven L. Evans".

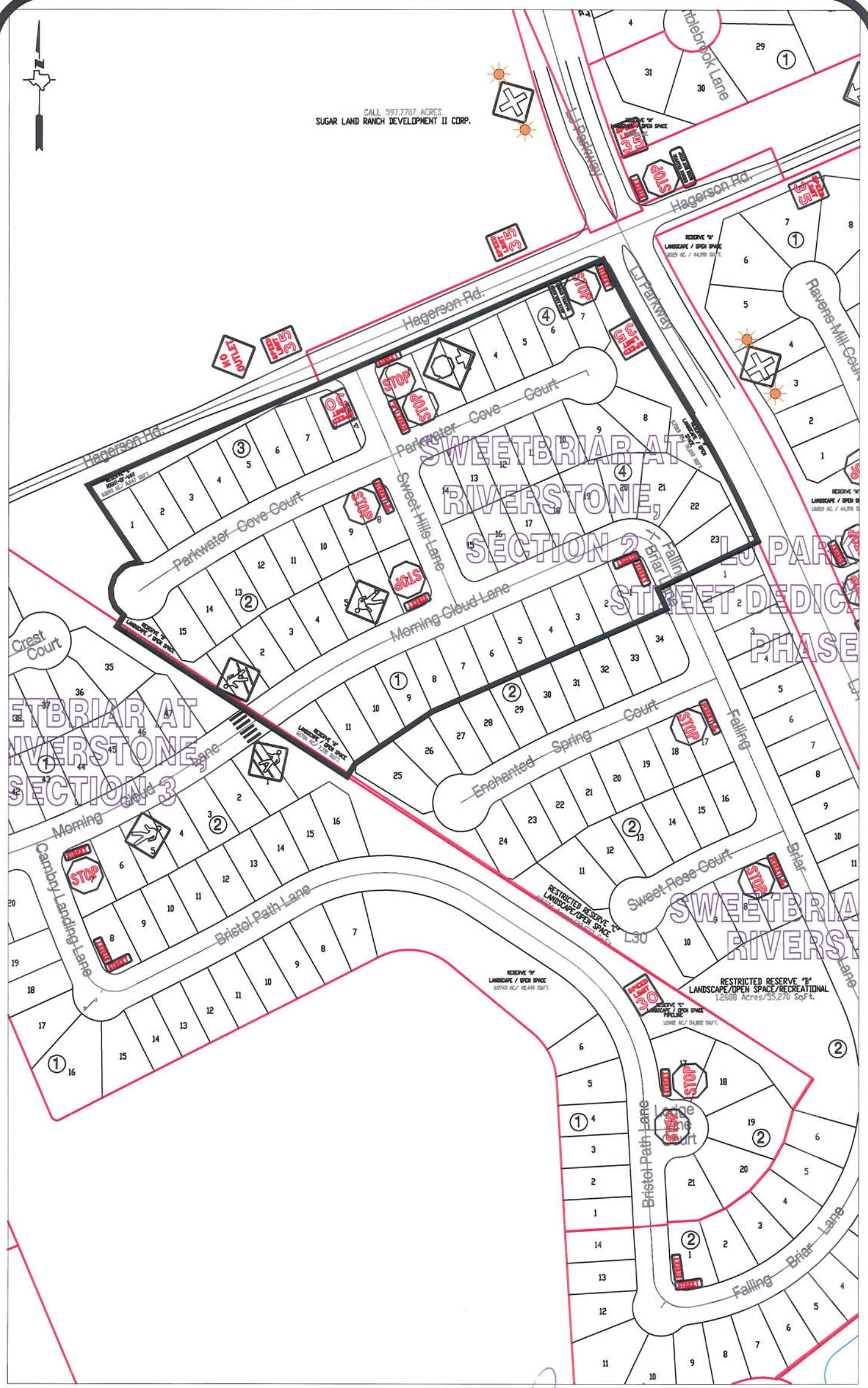
Steven L. Evans
Assistant to County Engineer

SLE/mjs

cc: Judge Robert E. Hebert, County Judge
Marc Grant - FBC Road & Bridge
Marc Grant - Signage Department
File



CALL 597.7767 ACRES
SUGAR LAND RANCH DEVELOPMENT II CORP.



Note:

The purpose of this traffic control plan is to establish traffic control for Sweetbriar at Riverstone, Section 2.

Drawn By: L. Brdecka

Date: 7-30-13

Approved By: Steven L. Evans

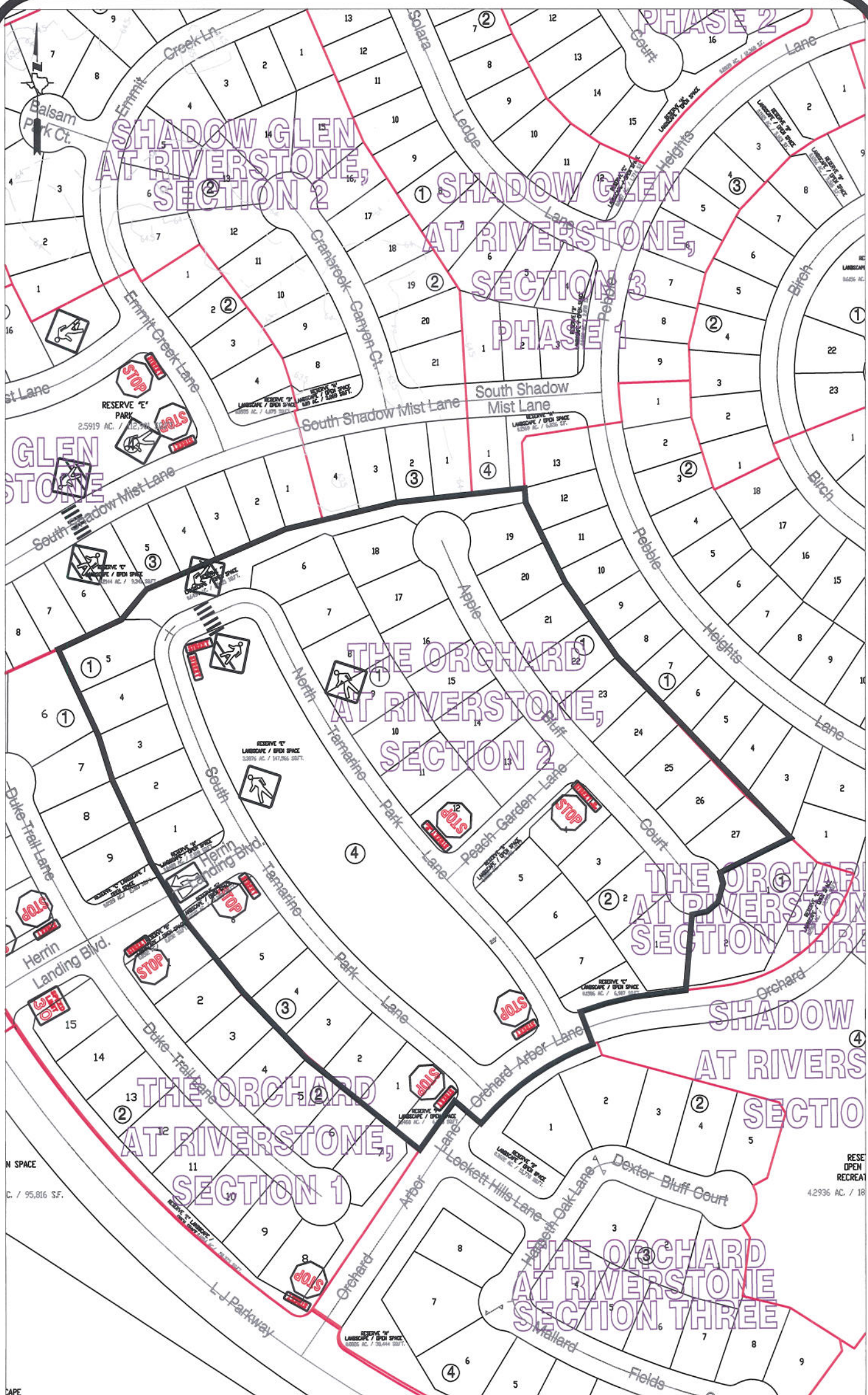
Date: 7-30-13

Scale

1" = 200'-0"

**Sweetbriar at Riverstone, Section 2
Control Map
and
Traffic Sign Layout**

Fort Bend County Engineering Dept.
1124 Blume Road
Rosenberg, Texas 77471



Note:

The purpose of this traffic control plan is to establish traffic control for Orchard at Riverstone, Section 2.

Drawn By: L. Brdecka

Date: 7-30-13

Approved By: Steven L. Evans

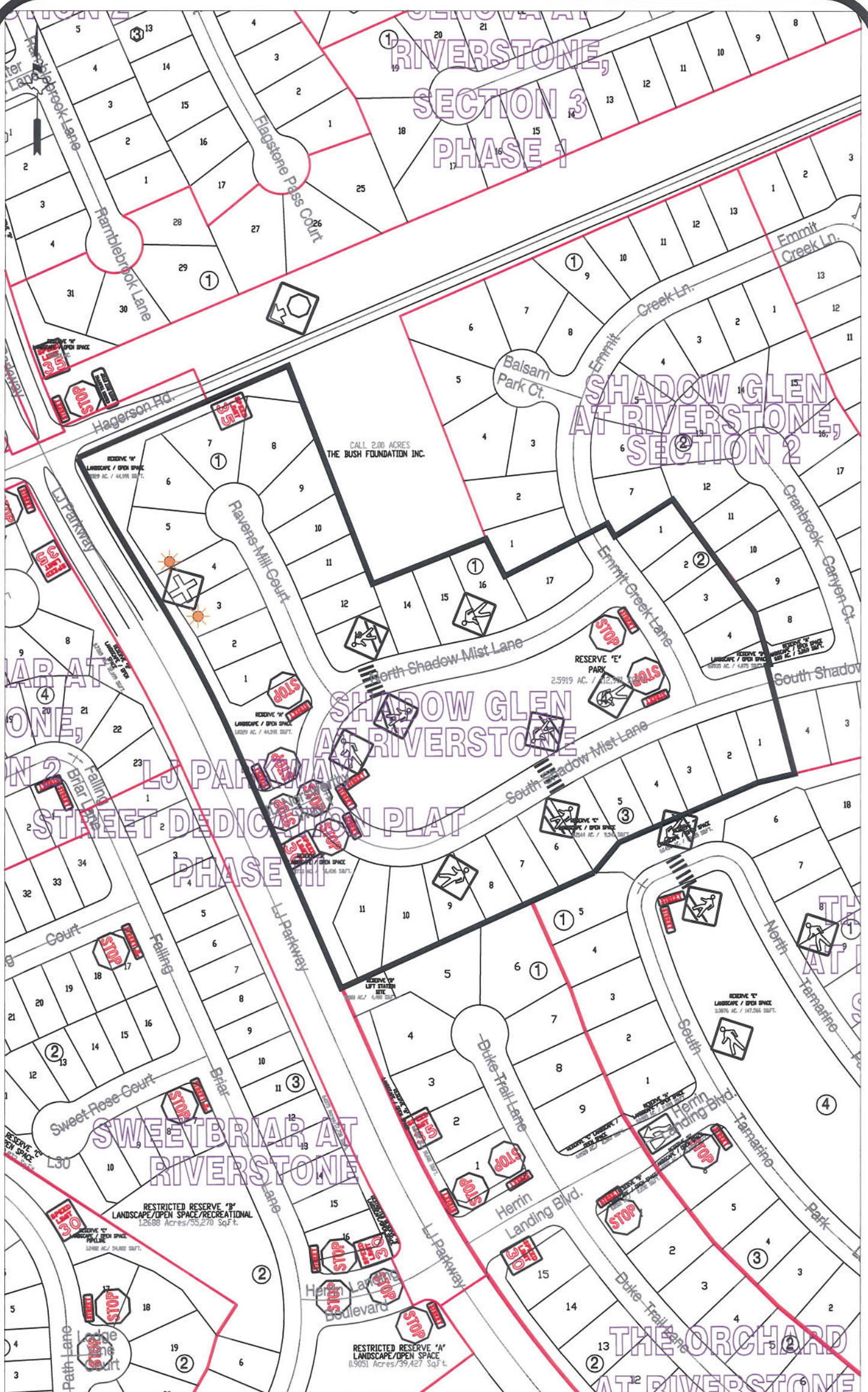
Date: 7-30-13

Scale

1" = 200'-0"

**Orchard at Riverstone, Section 2
Control Map
and
Traffic Sign Layout**

Fort Bend County Engineering Dept.
1124 Blume Road
Rosenberg, Texas 77471



Note:

The purpose of this traffic control plan is to establish traffic control for Shadow Glen at Riverstone.

Drawn By: L. Brdecka

Date: 7-30-13

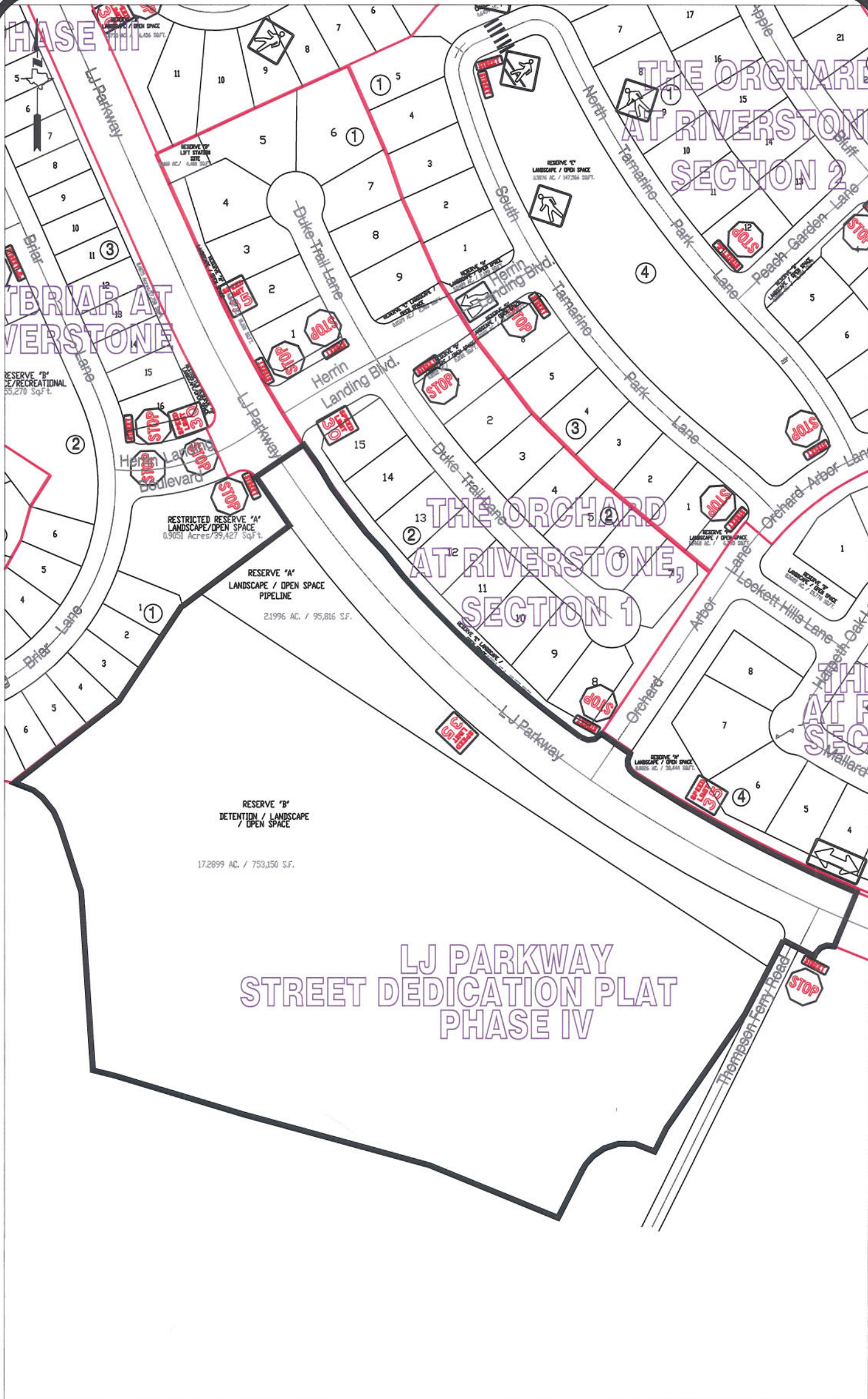
Approved By: Steven L. Evans

Date: 7-30-13

Scale 1" = 200'-0"

**Shadow Glen at Riverstone
Control Map
and
Traffic Sign Layout**

Fort Bend County Engineering Dept.
1124 Blume Road
Rosenberg, Texas 77471



Note:

The purpose of this traffic control plan is to establish traffic control for LJ Parkway STD Plat Phase IV.

Drawn By: L. Brdecka

Date: 7-30-13

Approved By: Steven L. Evans

Date: 7-30-13

Scale

1" = 200'-0"

**LJ Parkway STD Plat Phase IV
Control Map
and
Traffic Sign Layout**

Fort Bend County Engineering Dept.
1124 Blume Road
Rosenberg, Texas 77471