



FORT BEND COUNTY ENGINEERING

Fort Bend County, Texas

Richard W. Stolleis, P.E.
County Engineer

June 14, 2013

Commissioner W. A. "Andy" Meyers
Fort Bend County Precinct 3
22333 Grand Corner Drive
Katy, Texas 77494

RE: Traffic Study - Peek Road at Emily Park Lane

Dear Commissioner Meyers:

As per your request, Fort Bend County Engineering Department (FBCED) has conducted a traffic study for the referenced intersection to determine placement of an uncontrolled crosswalk at the referenced intersection. The FBCED has concluded, to best serve the pedestrians, the crosswalk would need to be placed on the north side of the intersection.

A traffic control plan is attached reflecting the location and the traffic control devices necessary for an unprotected crosswalk.

Fort Bend County Engineering Department recommends acceptance of the traffic control plan as submitted. The public hearing date for acceptance of the plan is being scheduled. A copy of the traffic control plan is attached for your review. If you should have any questions, please give me a call.

Sincerely,


Nathan D. Hatcher
Assistant to County Engineer

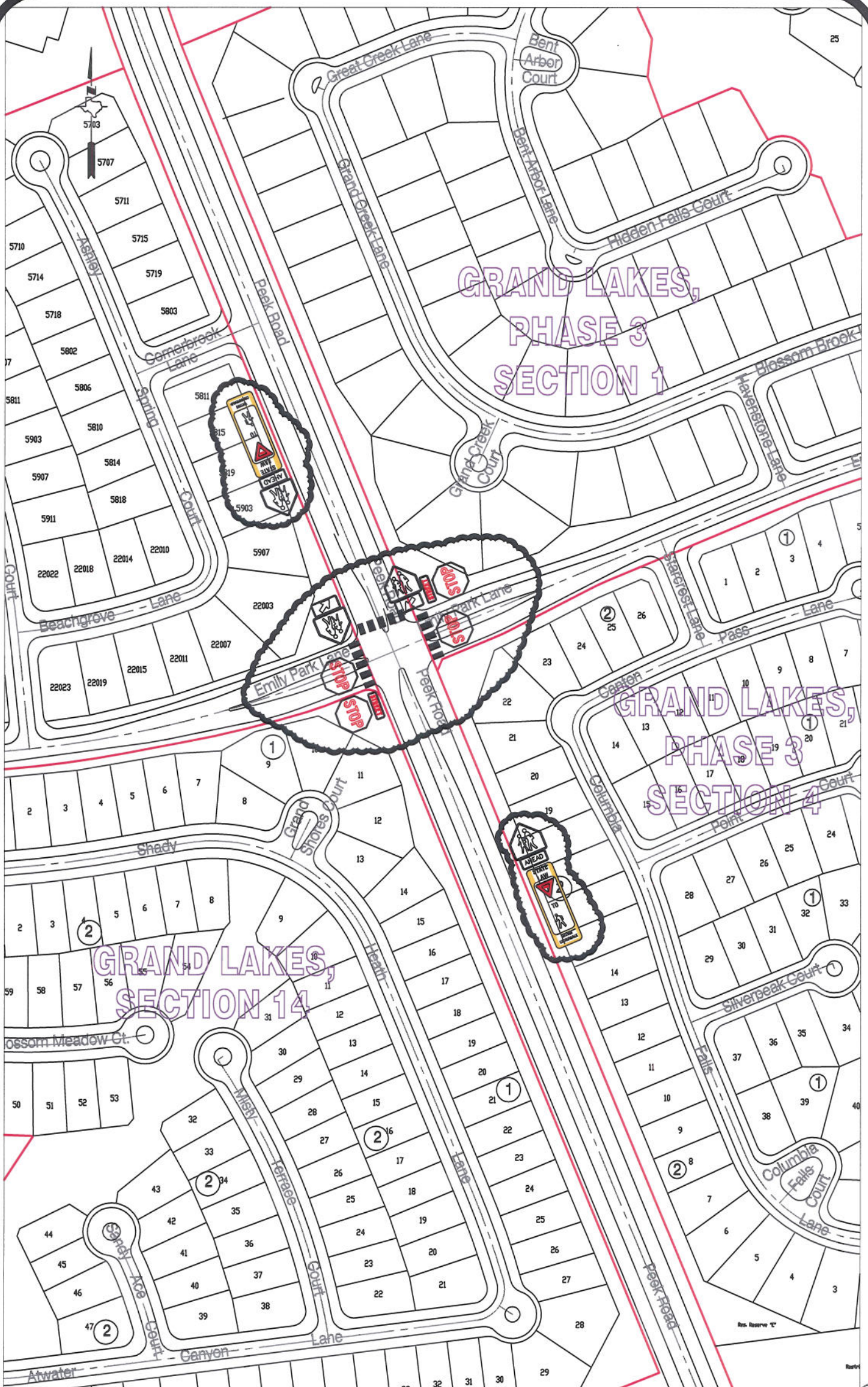
NDH/mjs

cc: Judge Robert E. Hebert, County Judge
Marc Grant - FBC Road & Bridge
Marc Grant - Signage Department
File

GRAND LAKES, PHASE 3 SECTION 1

GRAND LAKES, PHASE 3 SECTION 4

GRAND LAKES, SECTION 14



Note:

The purpose of this traffic control plan is to revise traffic control for the intersection of Peek Road and Emily Park Lane.

Drawn By: L. Brdecka

Date: 6-6-13

Approved By: Nathan Hatcher

Date: 6-6-13

Scale

1" = 200'-0"

**Peek Road at Emily Park Lane
Revised Control Map and
Traffic Sign Layout**

Fort Bend County Engineering Dept.
1124 Blume Road
Rosenberg, Texas 77471

View Cart

My Account / Order Status

Help

Search

Home > Traffic Control Signs > Traffic Warning Signs >

STATE LAW YIELD TO PEDESTRIAN WITHIN CROSSWALK SIGN

Categories

ADA Braille Signs

ANSI Signs & Labels

Barricade Tape

Bilingual Safety Signs

Confined Space Signs

Cylinder Signs & Labels

DOT Placards & Shipping Labels

Exit & Fire Emergency Signs

Floor Stands & Signs

Hard Hat Decals

Lock-Out and Electrical

NFPA & Hazmat Signs & Labels

OSHA Safety Signs

Pictorial Safety Signs

Pipe Markers

Safety Banners & Motivational Posters

Safety / Reflective Tapes

Safety Scoreboards

Safety Tags

Safety Vests & Apparel

Sign Posts & Hardware

Traffic Control Signs

Underground Warning Tape

Quick Links

MUTCD Manual on Uniform Traffic Control Devices

OSHA

SALE

Special Sale!

Announce special sale events here

Join our mailing list!

Join Now

VISA

MasterCard

Discover

Amex

CERTIFIED volusion SSL SECURE SITE

VERIFIED volusion MERCHANT

Authorize.Net Credit Card Processing

Our Price: ~~\$85.95~~

Update Price

Product Code: W14372

Choose your options:

Size and Construction

Options*: First, Select Size and Construction

Qty: 1

ADD TO CART

State Law Yield To Pedestrian Within Crosswalk Sign, 12" X 36"

Choose from High Intensity or Diamond Grade Reflective .080 aluminum. High quality, Long lasting, Never rust.

Larger Photo

Email a Friend

How this product will benefit your facility:

How this product will benefit your facility:

State Law Yield To Pedestrian Within Crosswalk Sign

Advance Warning Traffic Signs will make it easy to warn drivers of existing or potentially hazardous condition ahead. These highly visible signs warn drivers and pedestrians through your facility

Features:

Size 12" X 36"

.080 Rust free aluminum

High Intensity or Diamond Grade Reflective.

Fade resistant.

Rated 10 years.

Top and bottom center holes for easy installation.

Related Products...

ROAD CLOSED Sign

Our Price: ~~\$59.95~~

Add

DANGEROUS INTERSECTION Warning Sign

Our Price: ~~\$59.95~~

Add

STOP AHEAD WARNING SIGN

Our Price: ~~\$59.95~~

Add

SLIPPERY WHEN WET SYMBOL SIGN

Our Price: ~~\$59.95~~

Add

http://www.safetysupplywarehouse.com/YIELD TO PEDESTRIAN CROSSWALK Sig... 5/31/2013