



FORT BEND COUNTY ENGINEERING

Fort Bend County, Texas

Richard W. Stolleis, P.E.
County Engineer

June 20, 2013

Commissioner James Patterson
Fort Bend County Precinct 4
12919 Dairy Ashford Road
Sugar Land, Texas 77478

RE: Aliana, Section 1 - Traffic Control Plan
 Aliana, Section 12
 Aliana Binion Lane and Reserves

Commissioner Patterson:

Fort Bend County Engineering has completed and recommend approval of the traffic control plans for the above referenced subdivisions. The public hearing date for acceptance of the plans is being scheduled.

A copy of the traffic control plan is attached for your review. If you should have any questions, please give me a call.

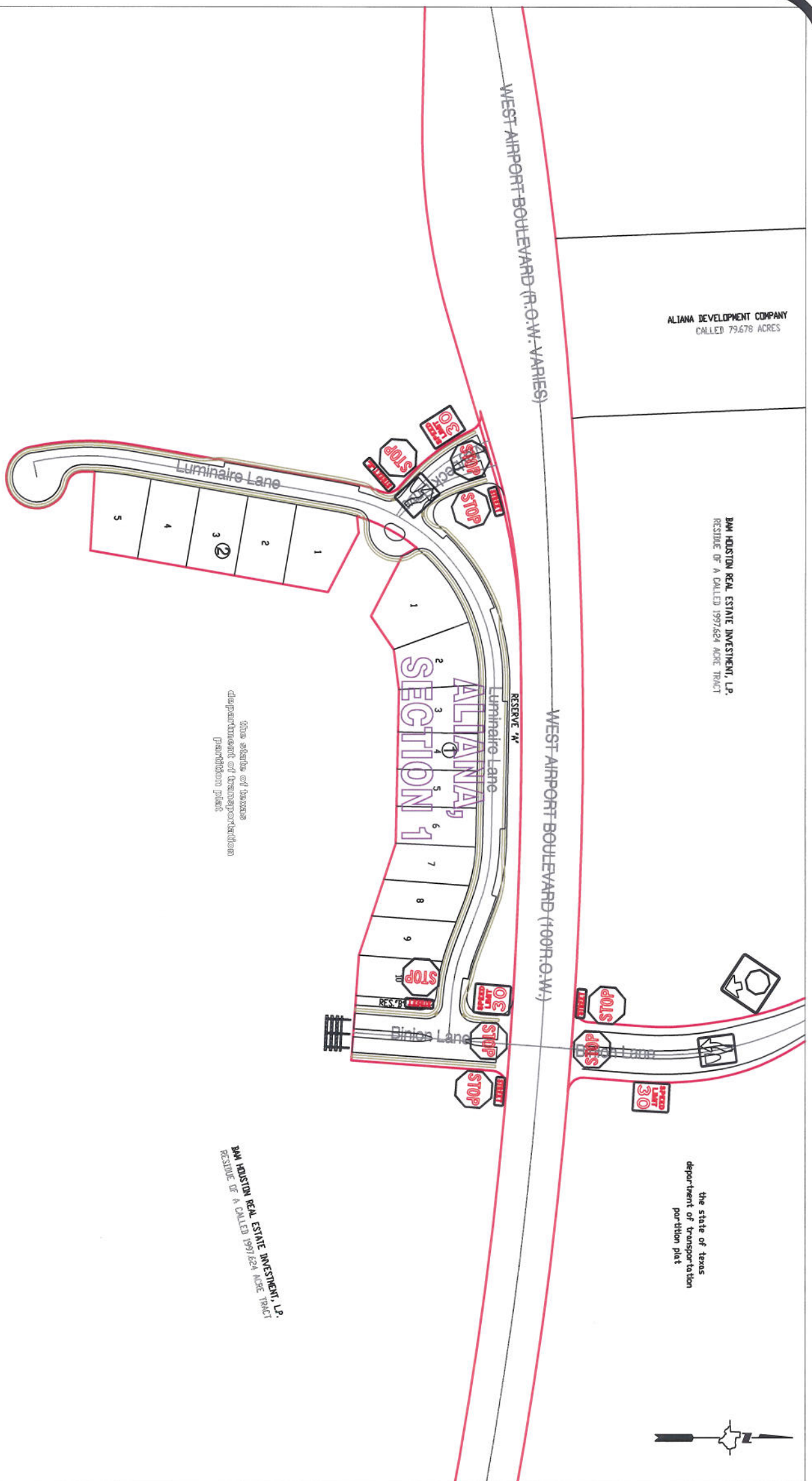
Sincerely,

A handwritten signature in black ink that reads "Steven L. Evans".

Steven L. Evans
Assistant to County Engineer

SLEmjs

cc: Judge Robert E. Hebert, County Judge
 Marc Grant - FBC Road & Bridge
 Marc Grant - Signage Department
 File



Note:

The purpose of this traffic control plan is to establish traffic control for Aliana, Section 1.

Drawn By: L. Brdecka

Date: 6-19-13

Approved By: Steven L. Evans

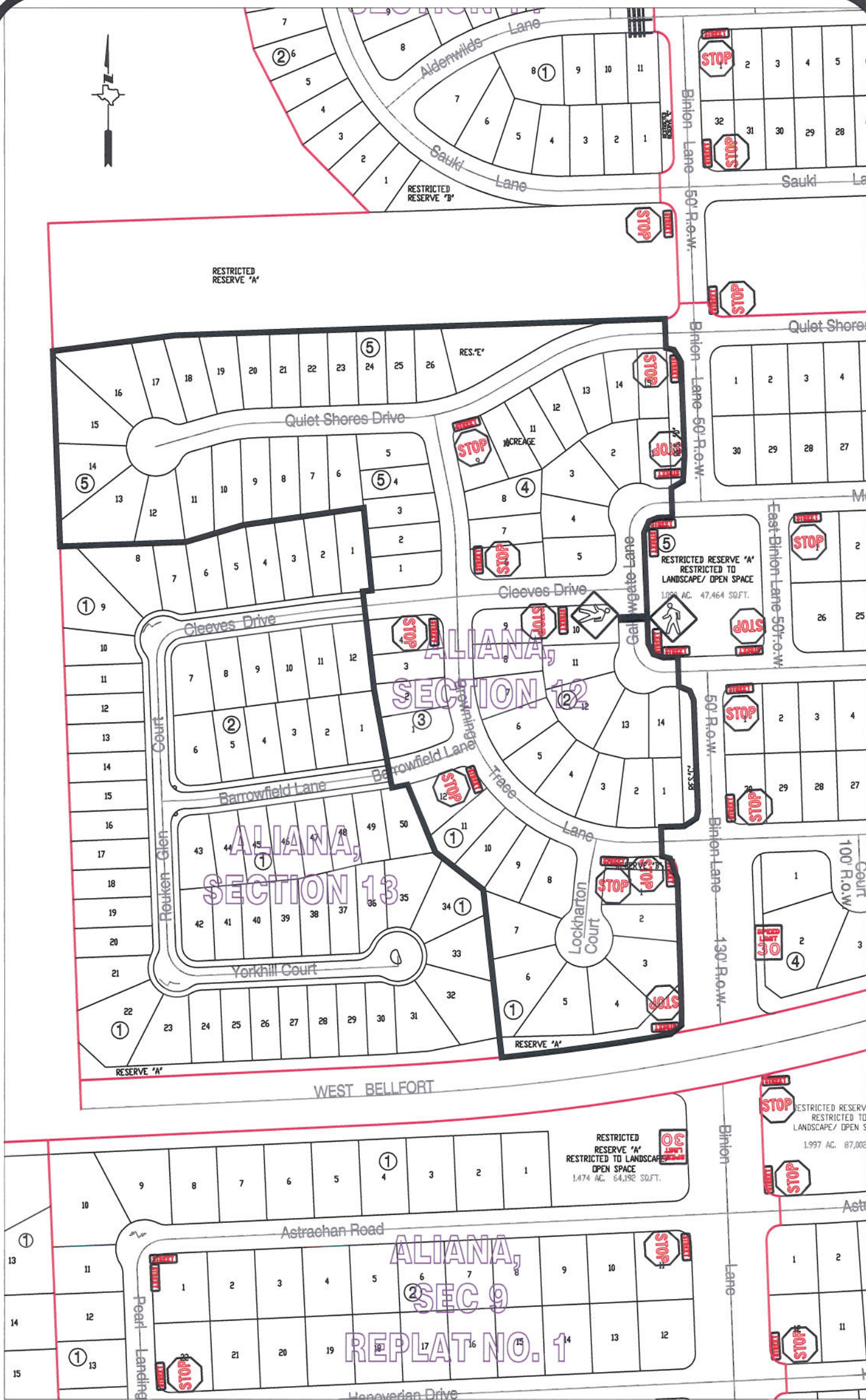
Date: 6-19-13

Scale

1" = 200'-0"

**Aliana, Section 1
Control Map and
Traffic Sign Layout**

Fort Bend County Engineering Dept.
1124 Blume Road
Rosenberg, Texas 77471



Note:

The purpose of this traffic control plan is to establish traffic control for Aliana, Section 12.

Drawn By: L. Brdecka

Date: 6-19-13

Approved By: Steven L. Evans

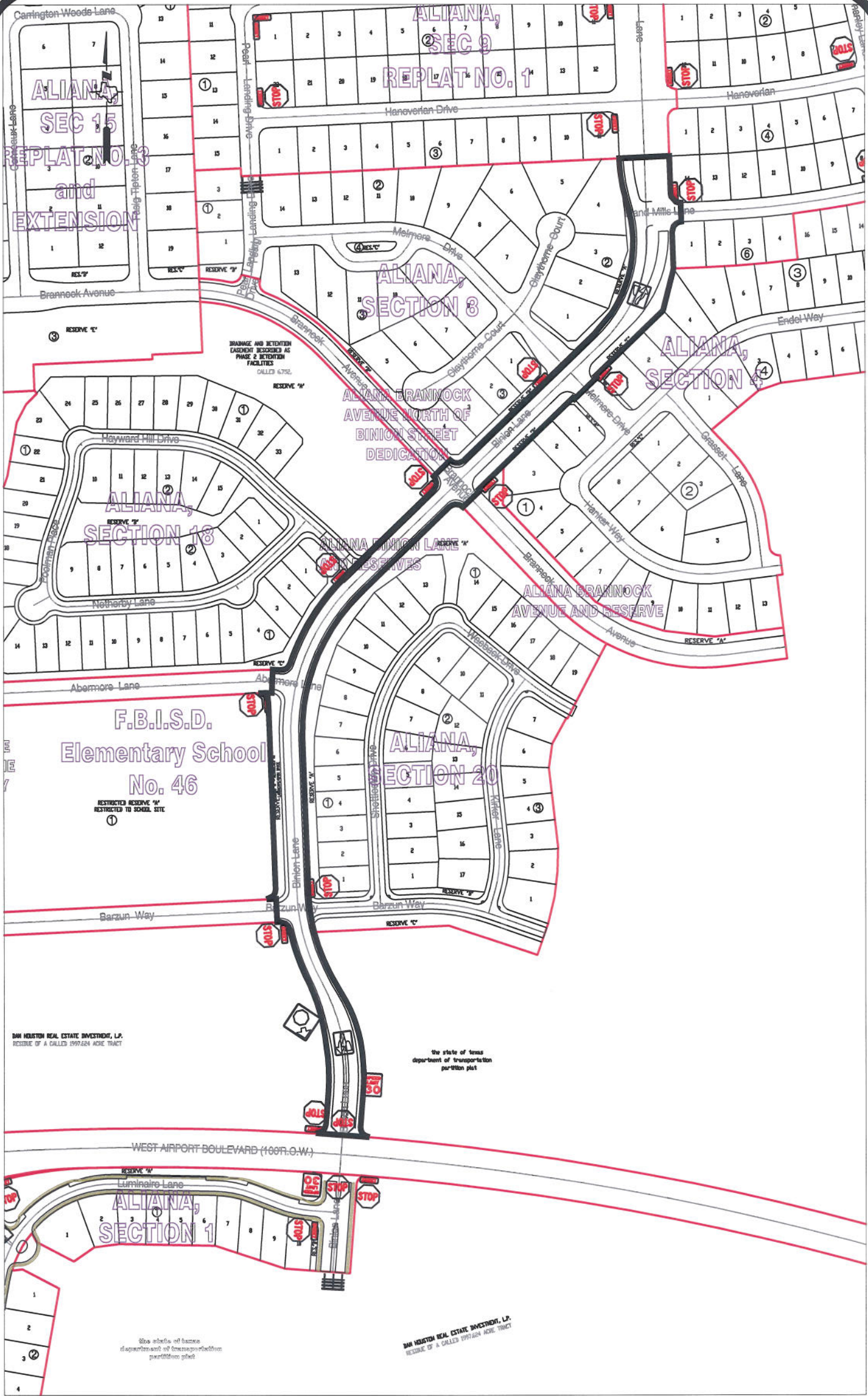
Date: 6-19-13

Scale

1" = 200'-0"

**Aliana, Section 12
Control Map and
Traffic Sign Layout**

Fort Bend County Engineering Dept.
1124 Blume Road
Rosenberg, Texas 77471



Note:

The purpose of this traffic control plan is to establish traffic control for Aliana Binion Lane and Reserves.

Drawn By: L. Brdecka

Date: 6-19-13

Approved By: Steven L. Evans

Date: 6-19-13

Scale

1" = 300'-0"

**Aliana Binion Lane and Reserves
Control Map and
Traffic Sign Layout**

Fort Bend County Engineering Dept.
1124 Blume Road
Rosenberg, Texas 77471