



FORT BEND COUNTY ENGINEERING

Fort Bend County, Texas

Richard W. Stolleis, P.E.
County Engineer

May 28, 2013

Commissioner Richard Morrison
Fort Bend County Precinct 1
1517 Eugene Heimann Circle, Suite 300
Richmond, Texas 77469

RE: Del Webb-Richmond, Section 1 - Traffic Control Plan
Del Webb-Richmond, Section 1B
Del Webb-Richmond, Section 1C
Del Webb-Richmond, Section 2

Commissioner Morrison:

Fort Bend County Engineering has completed and recommend approval of the traffic control plans for the above referenced subdivisions. The public hearing date for acceptance of the plans is scheduled for 6/25/2013.

A copy of the traffic control plan is attached for your review. If you should have any questions, please give me a call.

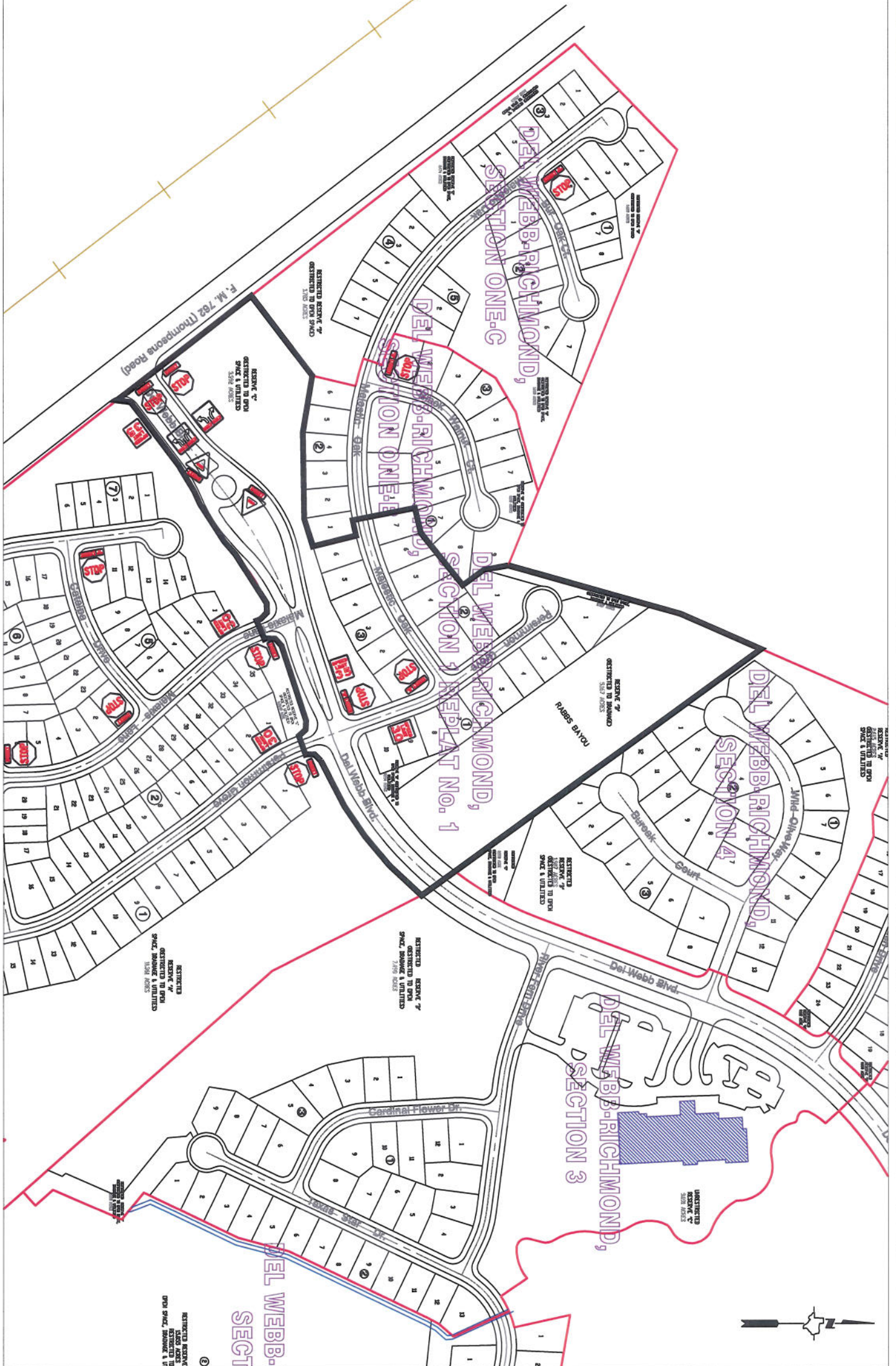
Sincerely,

A handwritten signature in black ink, reading "Steven L. Evans".

Steven L. Evans
Assistant to County Engineer

SLEmjs

cc: Judge Robert E. Hebert, County Judge
Marc Grant - FBC Road & Bridge
Marc Grant - Signage Department
File



Note:

The purpose of this traffic control plan is to establish traffic control for Del Webb - Richmond, Section 1.

Drawn By: L. Brdecka

Date: 5-23-13

Approved By: Steven L. Evans

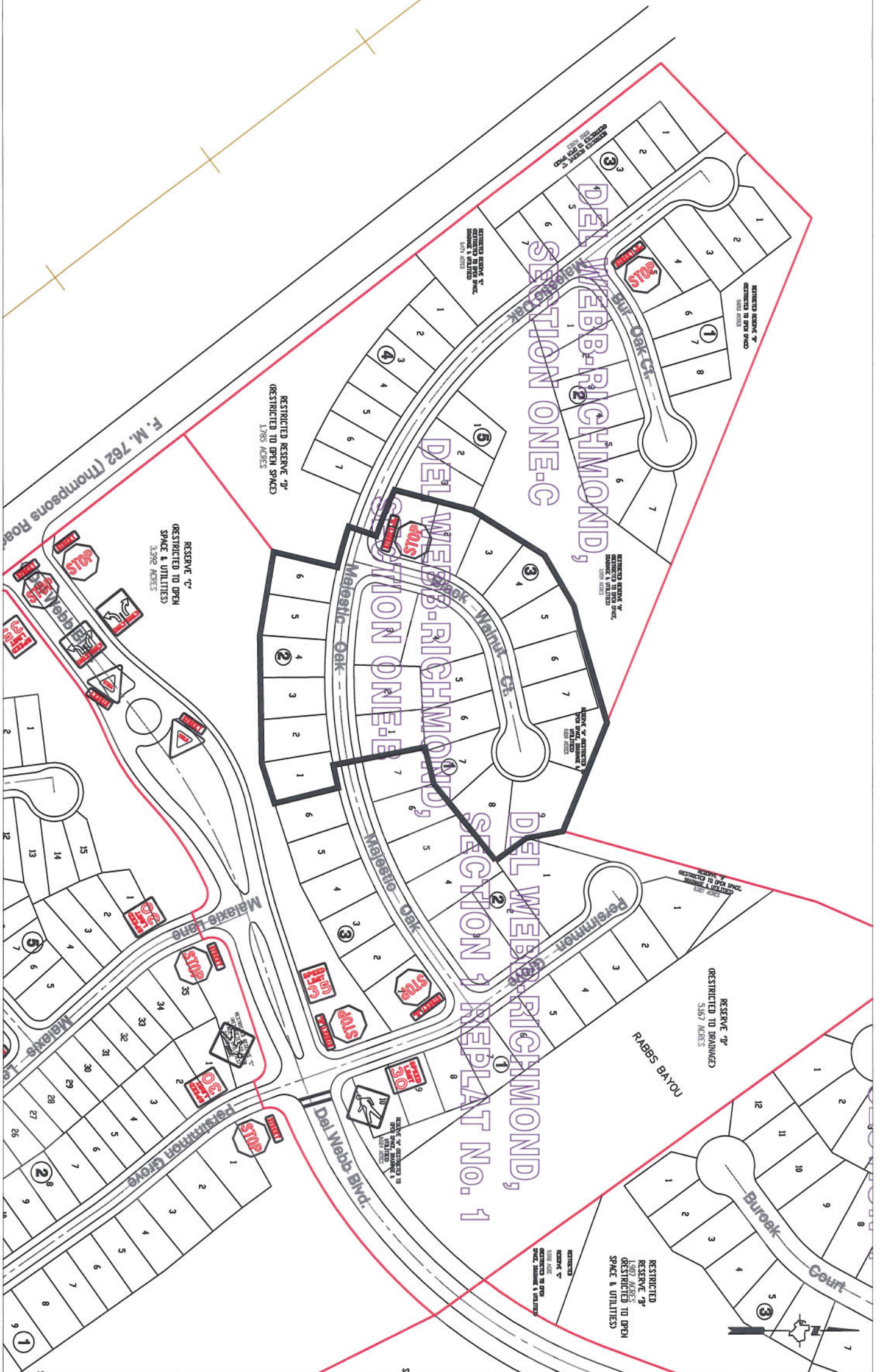
Date: 5-23-13

Scale

1" = 300'-0"

**Del Webb - Richmond, Section 1
Control Map and
Traffic Sign Layout**

Fort Bend County Engineering Dept.
1124 Blume Road
Rosenberg, Texas 77471



Note:

The purpose of this traffic control plan is to establish traffic control for Del Webb - Richmond, Section 1B.

Drawn By: L. Brdecka

Date: 5-23-13

Approved By: Steven L. Evans

Date: 5-23-13

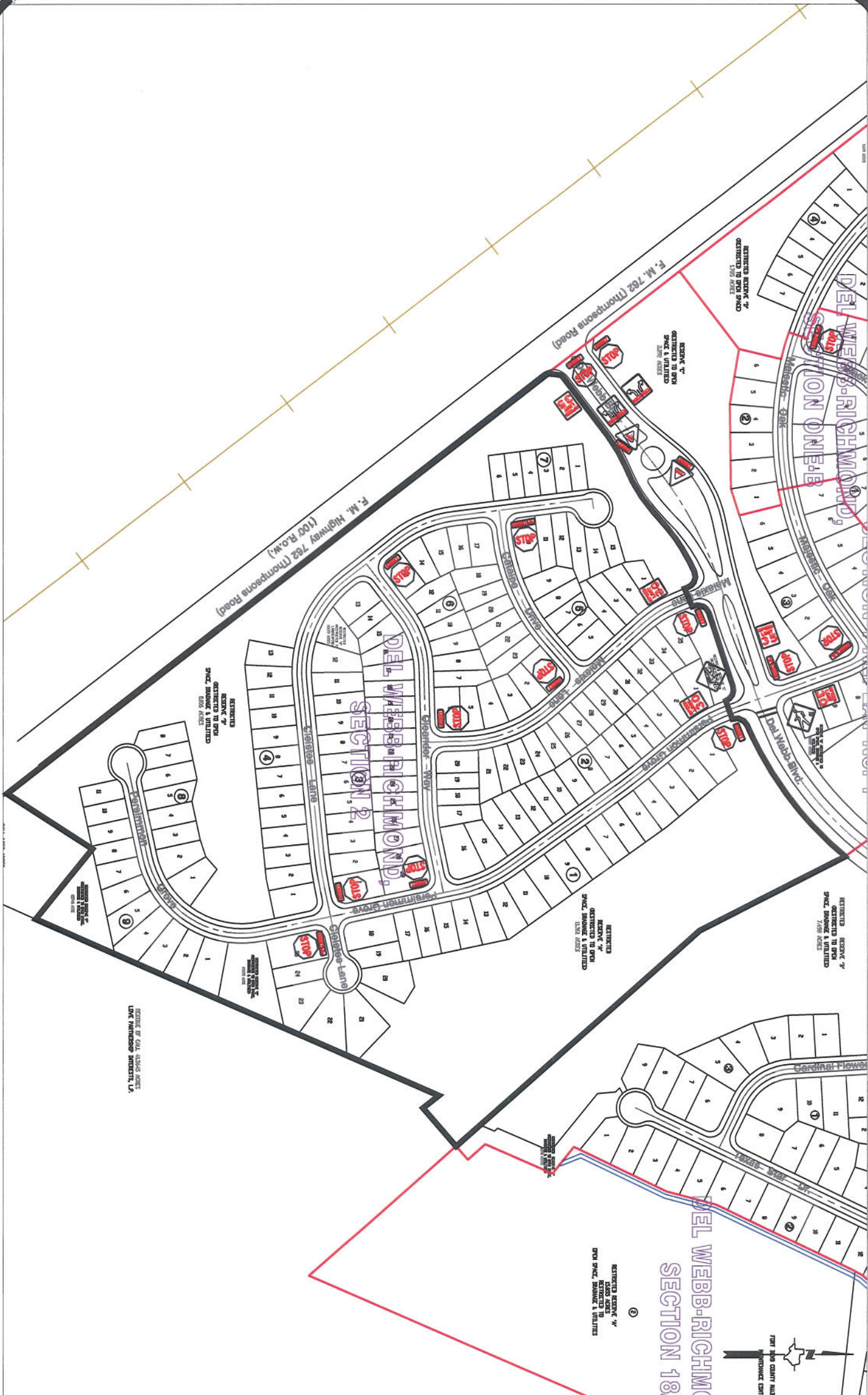
Scale

1" = 200'-0"

Del Webb - Richmond, Section 1B

**Control Map and
Traffic Sign Layout**

Fort Bend County Engineering Dept.
1124 Blume Road
Rosenberg, Texas 77471



Note:

The purpose of this traffic control plan is to establish traffic control for Del Webb - Richmond, Section 2.

Drawn By: L. Brdecka
Date: 5-23-13
Approved By: Steven L. Evans
Date: 5-23-13
Scale
1" = 300'-0"

Del Webb - Richmond, Section 2
Control Map and
Traffic Sign Layout

Fort Bend County Engineering Dept.
1124 Blume Road
Rosenberg, Texas 77471