



FORT BEND COUNTY ENGINEERING

Fort Bend County, Texas

Richard W. Stolleis, P.E.
County Engineer

April 10, 2013

Commissioner James Patterson
Fort Bend County Precinct 4
12919 Dairy Ashford Road
Sugar Land, Texas 77478

RE: Hagerson Road at LJ Parkway (Riverstone Community)

Dear Commissioner:

Fort Bend County Engineering has completed a traffic study for the above referenced request, received by email February 27, 2013, to consider lowering the speed limit on Hagerson Road and restricting truck traffic.

Truck traffic observed on Hagerson Road is from construction traffic generated from new subdivision sections that are being constructed at the intersection of Thompsons Ferry Road and Hagerson Road. Since Thompsons Ferry Road has been abandoned south of the intersection of Hagerson Road, more construction traffic has been generated on Hagerson Road. This traffic should decrease significantly after the subdivision sections are completed.

The speed limit on Hagerson Road is posted at 40 mph on both sides of LJ Parkway. Engineering has determined that should be reduced to 35 mph for the condition of the roadway. Engineering is recommending that stop ahead signs be placed on both sides of LJ Parkway and increase the stop sign size to 36" to help alert drivers of the intersection. "Cross Traffic Does Not Stop" signs have been added to the stop signs on each side of LJ Parkway to warn drivers that LJ Parkway traffic does not stop. Adequate visibility is being maintained at the intersection with the removal of some vegetation. Engineering will check this periodically to make sure there is adequate sight distance.

With the opening of the bridge on LJ Parkway later this year, traffic will increase on LJ Parkway since this will become a connection to the Sienna development.

I have attached a traffic control plan for Hagerson Road to cover the installation of the regulatory signs. If you should have any questions or are in need of additional information, please give me a call.

Sincerely,

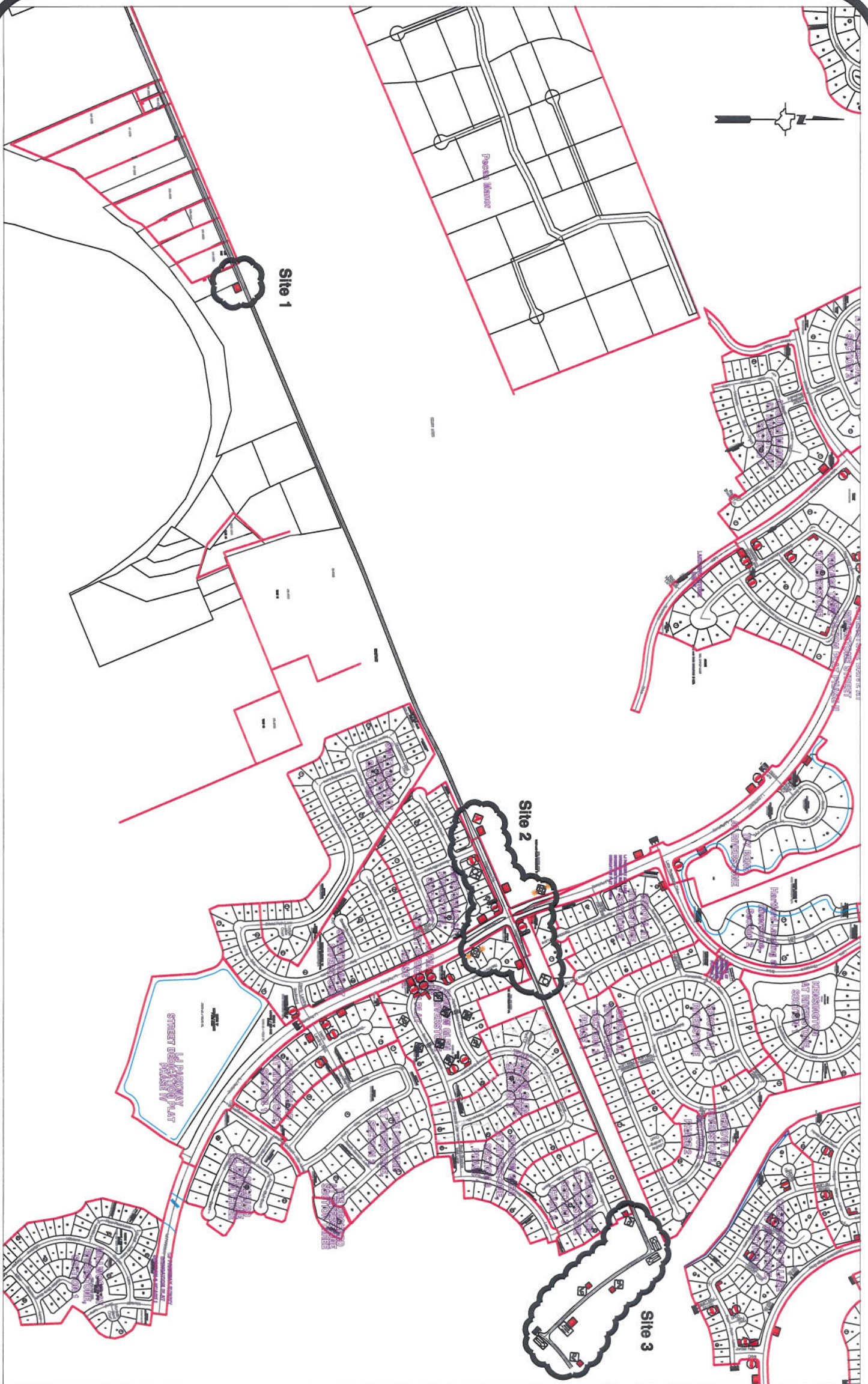
A handwritten signature in black ink that reads "Steven L. Evans".

Steven L. Evans
Assistant to County Engineer

SLE/mjs

cc: Judge Robert E. Hebert, County Judge
Marc Grant - FBC Road & Bridge
Marc Grant - Signage Department
File

P.O. Box 1449 • 1124 Blume Road • Rosenberg, Texas 77471 • (281) 633-7500 • Fax (281) 342-7366
I:\WPDATA\LETTERS\TRAFSTUD\Hagerson_LJ Parkway_0413.doc



Sheet 1 of 2

Note:
The purpose of this traffic control plan is to establish traffic control for Hagerson Road.

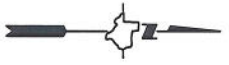
Stop signs at the intersection of Hagerson Road and LJ Parkway shall be 36" x 36".

Drawn By: L. Brdecka
Date: 4-8-13
Approved By: Steven L. Evans
Date: 4-8-13
Scale
N.T.S.

Hagerson Road
Control Map and
Traffic Sign Layout



Fort Bend County Engineering Dept.
1124 Blume Road
Rosenberg, Texas 77471



Sheet 2 of 2

Note:
The purpose of this traffic control plan is to establish traffic control for Hagerson Road.

Stop signs at the intersection of Hagerson Road and Lj Parkway shall be 36" x 36".

Drawn By: L. Brdecka
Date: 4-8-13
Approved By: Steven L. Evans
Date: 4-8-13
Scale
N.T.S.

**Hagerson Road
Control Map and
Traffic Sign Layout**

Fort Bend County Engineering Dept.
1124 Blume Road
Rosenberg, Texas 77471