



FORT BEND COUNTY ENGINEERING

Fort Bend County, Texas

Richard W. Stolleis, P.E.
County Engineer

April 16, 2013

Commissioner W. A. "Andy" Meyers
Fort Bend County Precinct 3
22333 Grand Corner Drive
Katy, Texas 77494

**RE: Katy Creek Ranch, Section 6 - Traffic Control Plan
Katy Creek Ranch, Section 7**

Dear Commissioner:

Fort Bend County Engineering has completed and recommends approval of the traffic control plans for the above referenced subdivisions. The public hearing date for acceptance of the plans is being scheduled.

A copy of the traffic control plans are attached for your review. If you should have any questions, please give me a call.

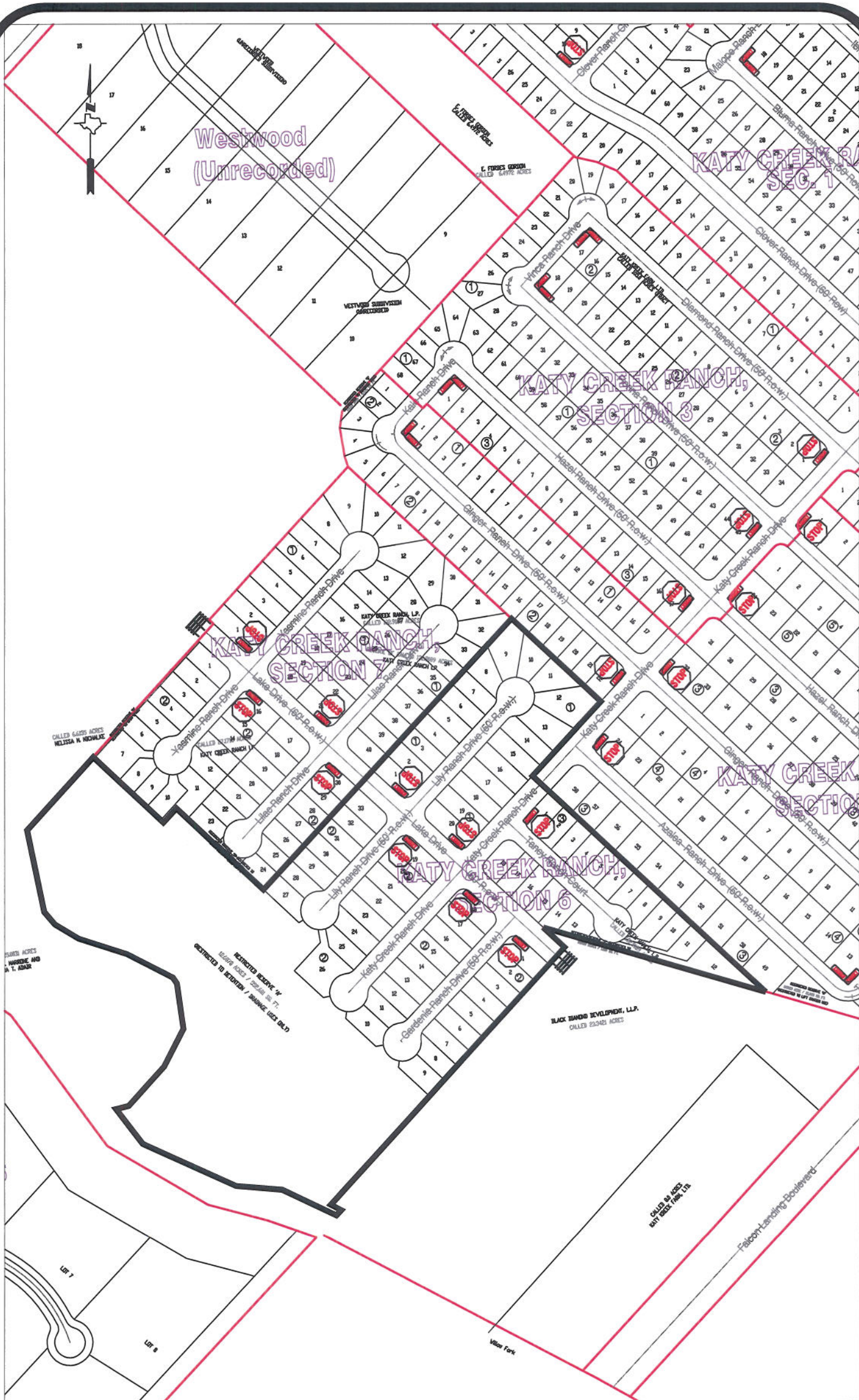
Sincerely,

A handwritten signature in black ink, appearing to read "Nathan D. Hatcher", is written over the word "Sincerely,".

Nathan D. Hatcher
Assistant to County Engineer

NDH/mjs

cc: Judge Robert E. Hebert, County Judge
Marc Grant - FBC Road & Bridge
Marc Grant - Signage Department
File



Note:

The purpose of this traffic control plan is to establish traffic control for Katy Creek Ranch, Section 6.

Drawn By: L. Brdecka

Date: 4-16-13

Approved By: Nathan Hatcher

Date: 4-16-13

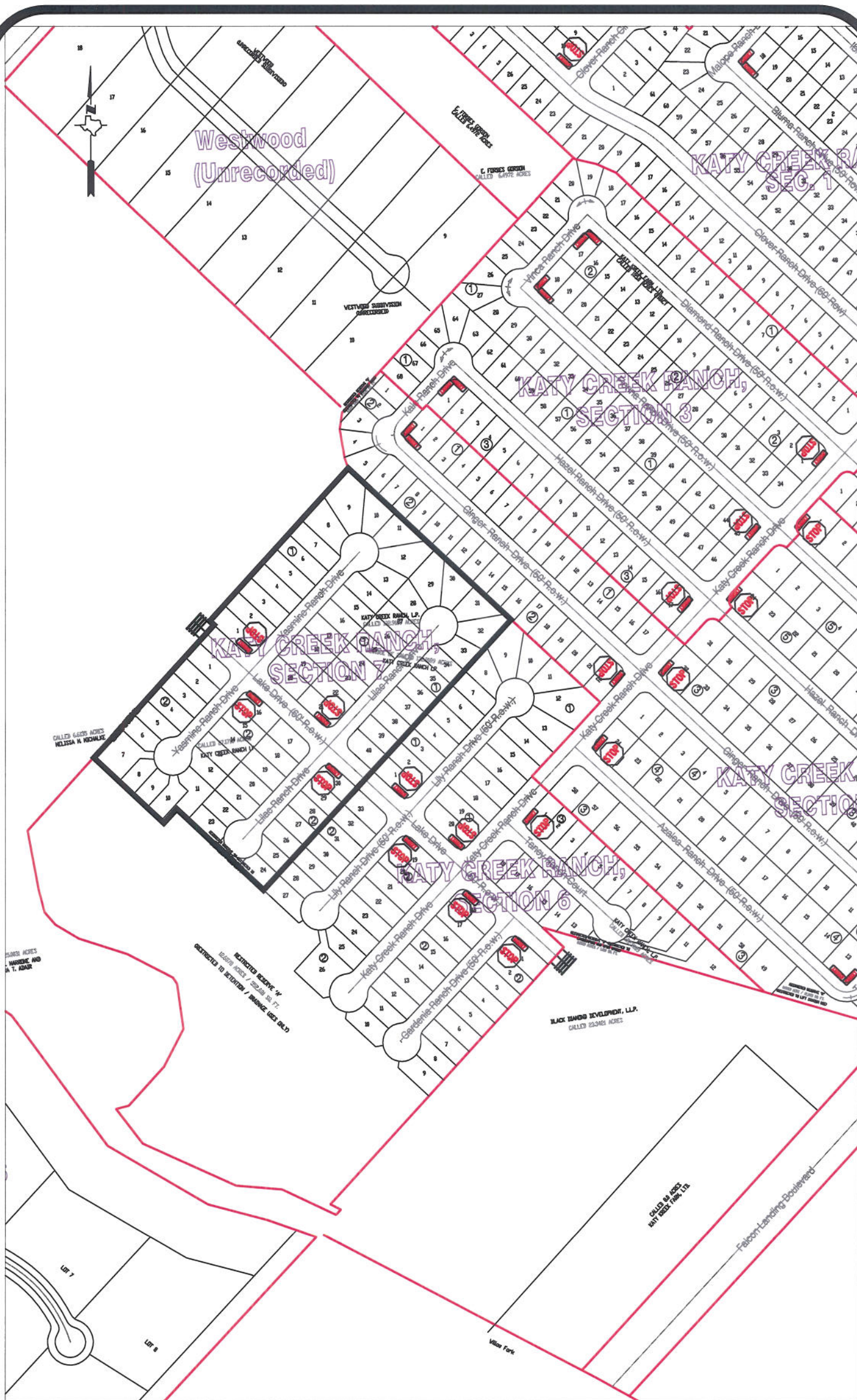
Scale

1" = 200'-0"

Katy Creek Ranch, Section 6

**Control Map and
Traffic Sign Layout**

Fort Bend County Engineering Dept.
1124 Blume Road
Rosenberg, Texas 77471



Note:

The purpose of this traffic control plan is to establish traffic control for Katy Creek Ranch, Section 7.

Drawn By: L. Brdecka

Date: 4-18-13

Approved By: Nathan Hatcher

Date: 4-18-13

Scale

1" = 200'-0"

Katy Creek Ranch, Section 7

**Control Map and
Traffic Sign Layout**

OK
SA

Fort Bend County Engineering Dept.
1124 Blume Road
Rosenberg, Texas 77471