



## **FORT BEND COUNTY ENGINEERING**

Fort Bend County, Texas

Richard W. Stolleis, P.E.  
County Engineer

March 7, 2013

Commissioner James Patterson  
Fort Bend County Precinct 4  
12919 Dairy Ashford Road  
Sugar Land, Texas 77478

**RE: Revised traffic control plan for University Boulevard from LJ Parkway to Oilfield Road to establish the speed limit at 40 mph**

Dear Commissioner:

Fort Bend County Engineering has completed a traffic study for the above referenced request, received by email February 26, 2013, to consider installing a multi-way stop at Lake Riverstone Drive & LJ Parkway and Lake Riverstone Drive at University Boulevard.

### **University Boulevard at Lake Riverstone Drive**

On November 8, 2011 Commissioner's Court approved the speed limit on University Boulevard from LJ Parkway/Manor Road to Oilfield Road at 35 mph. Since that time speed limit signs have been posted at 45 mph for this section of roadway by mistake. With the recent opening of University Boulevard west of LJ Parkway, the City of Sugar Land has posted the speed on University Boulevard at 40 mph. University Boulevard to the east of Oilfield Road has been posted at 40 mph by the City of Missouri City. It is the recommendation of Fort Bend County Engineering to repost the section of University Boulevard from LJ Parkway to Oilfield Road at 40 mph to be consistent with the adjoining city posted speeds. Fort Bend Engineering also recommends that intersection ahead signs (W2-2) be placed at each side of the intersection of Lake Riverstone Drive warning drivers of the approaching intersection. This T-intersection does not warrant a multi-way stop.

### **LJ Parkway at Lake Riverstone Drive**

After looking at the existing conditions of this intersection, Fort Bend Engineering recommends no changes at this time. Sight distances are not obstructed in any direction at this intersection. The posted speeds on both LJ Parkway and Lake Riverstone Drive is 35 mph. LJ Parkway is a boulevard street and Lake Riverstone Drive is a 2-lane collector street. The area around this intersection is not fully developed yet. Within the next 6 months to a year, LJ Parkway will see an increase in traffic when the connection is made to the Sienna subdivision area. At that time, there may be a need to restudy this intersection for a possible signal once the area is built out and all of the connections are made to the surrounding development areas.

P.O. Box 1449 • 1124 Blume Road • Rosenberg, Texas 77471 • (281) 633-7500 • Fax (281) 342-7366  
I:\WPDATA\LETTERS\TRAFSTUD\Lake Riverstone\_LJ Parkway\_University0313.doc

A revised traffic control plan is attached to modify the existing speed on University Boulevard. The public hearing date for acceptance of the plan is being scheduled. If you should have any questions, please give me a call.

Sincerely,

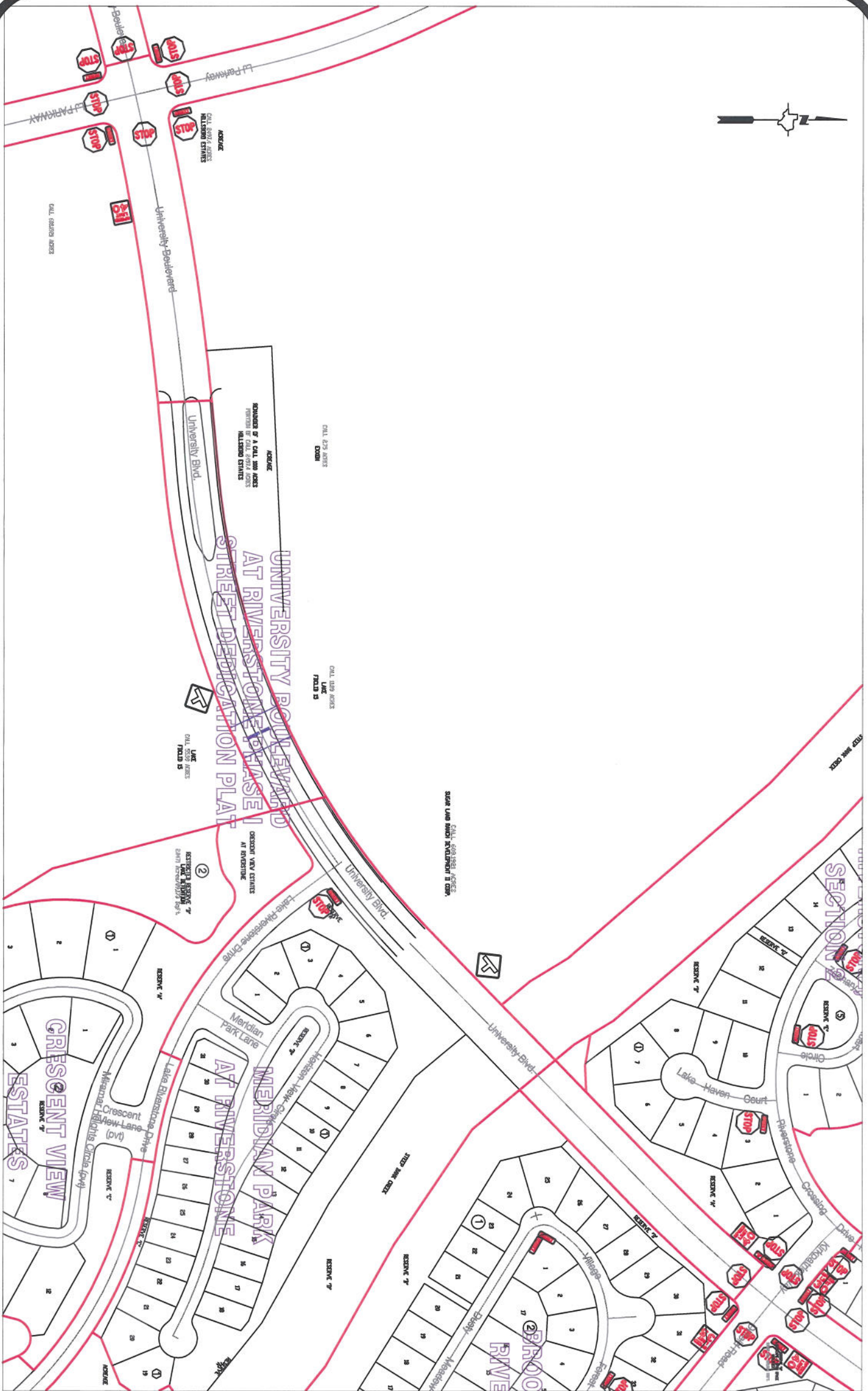
A handwritten signature in blue ink, appearing to read "Steven L. Evans".

Steven L. Evans  
Assistant to County Engineer

SLE/mjs

cc: Judge Robert E. Hebert, County Judge  
Marc Grant - FBC Road & Bridge  
Marc Grant - Signage Department  
File





**Note:**

The purpose of this traffic control plan is to establish traffic control for University Boulevard from LJ Parkway to Oilfield Road.

Drawn By: L. Brdecka

Date: 3-6-13

Approved By: Steven L. Evans

Date: 3-6-13

Scale

1" = 300'-0"

**University Boulevard from LJ Parkway  
to Oilfield Road  
Control Map and Traffic Sign Layout**

Fort Bend County Engineering Dept.  
1124 Blume Road  
Rosenberg, Texas 77471