



## FORT BEND COUNTY ENGINEERING

Fort Bend County, Texas

Richard W. Stolleis, P.E.  
County Engineer

January 4, 2013

Commissioner W. A. "Andy" Meyers  
Fort Bend County Precinct 3  
22333 Grand Corner Drive  
Katy, Texas 77494

**RE: King Lakes, Section 5 - Traffic Control Plan**  
**King Lakes, Section 10**  
**King Lakes, Section 11**  
**King Lakes, Section 12**

Dear Commissioner:

Fort Bend County Engineering has completed and recommends approval of the traffic control plans for the above referenced subdivisions. The public hearing date for acceptance of the plans is being scheduled.

A copy of the traffic control plans are attached for your review. If you should have any questions, please give me a call.

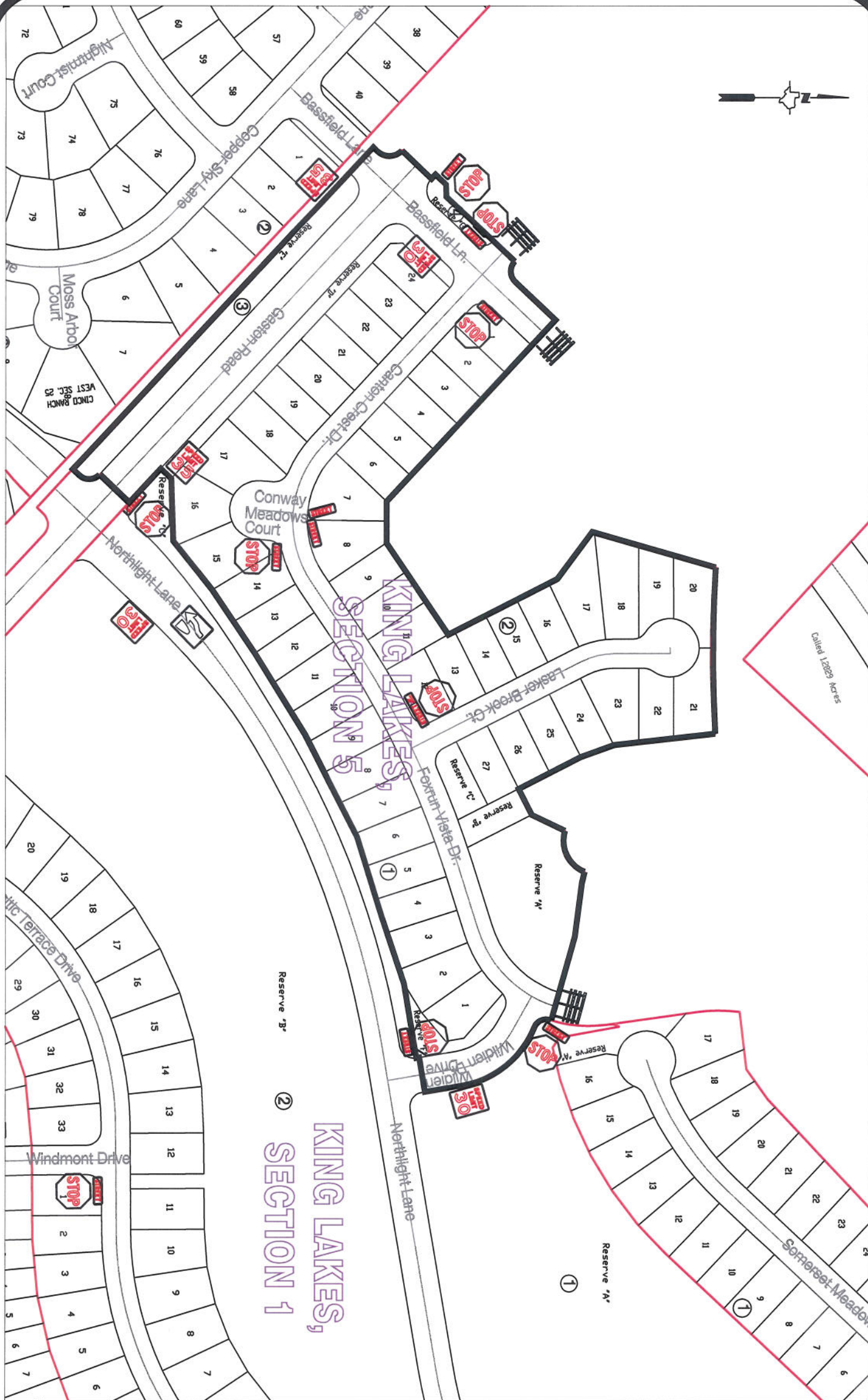
Sincerely,

A handwritten signature in dark ink, appearing to read "Nathan D. Hatcher", is written over a horizontal line.

Nathan D. Hatcher  
Assistant to County Engineer

NDH/mjs

cc: Judge Robert E. Hebert, County Judge  
Marc Grant - FBC Road & Bridge  
Marc Grant - Signage Department  
File



**Note:**

The purpose of this traffic control plan is to establish traffic control for King Lakes, Section 5.

Drawn By: L. Brdecka

Date: 12-21-12

Approved By: Nathan Hatcher

Date: 12-21-12

Scale

1" = 200'-0"

**King Lakes, Section 5  
Control Map and  
Traffic Sign Layout**

Fort Bend County Engineering Dept.  
1124 Blume Road  
Rosenberg, Texas 77471





**Note:**

The purpose of this traffic control plan is to establish traffic control for King Lakes, Section 10.

Drawn By: L. Brdecka

Date: 12-21-12

Approved By: Nathan Hatcher

Date: 12-21-12

Scale

1" = 200'-0"

**King Lakes, Section 10  
Control Map and  
Traffic Sign Layout**

Fort Bend County Engineering Dept.  
1124 Blume Road  
Rosenberg, Texas 77471





**Note:**

The purpose of this traffic control plan is to establish traffic control for King Lakes, Section 11.

Drawn By: L. Brdecka

Date: 12-21-12

Approved By: Nathan Hatcher

Date: 12-21-12

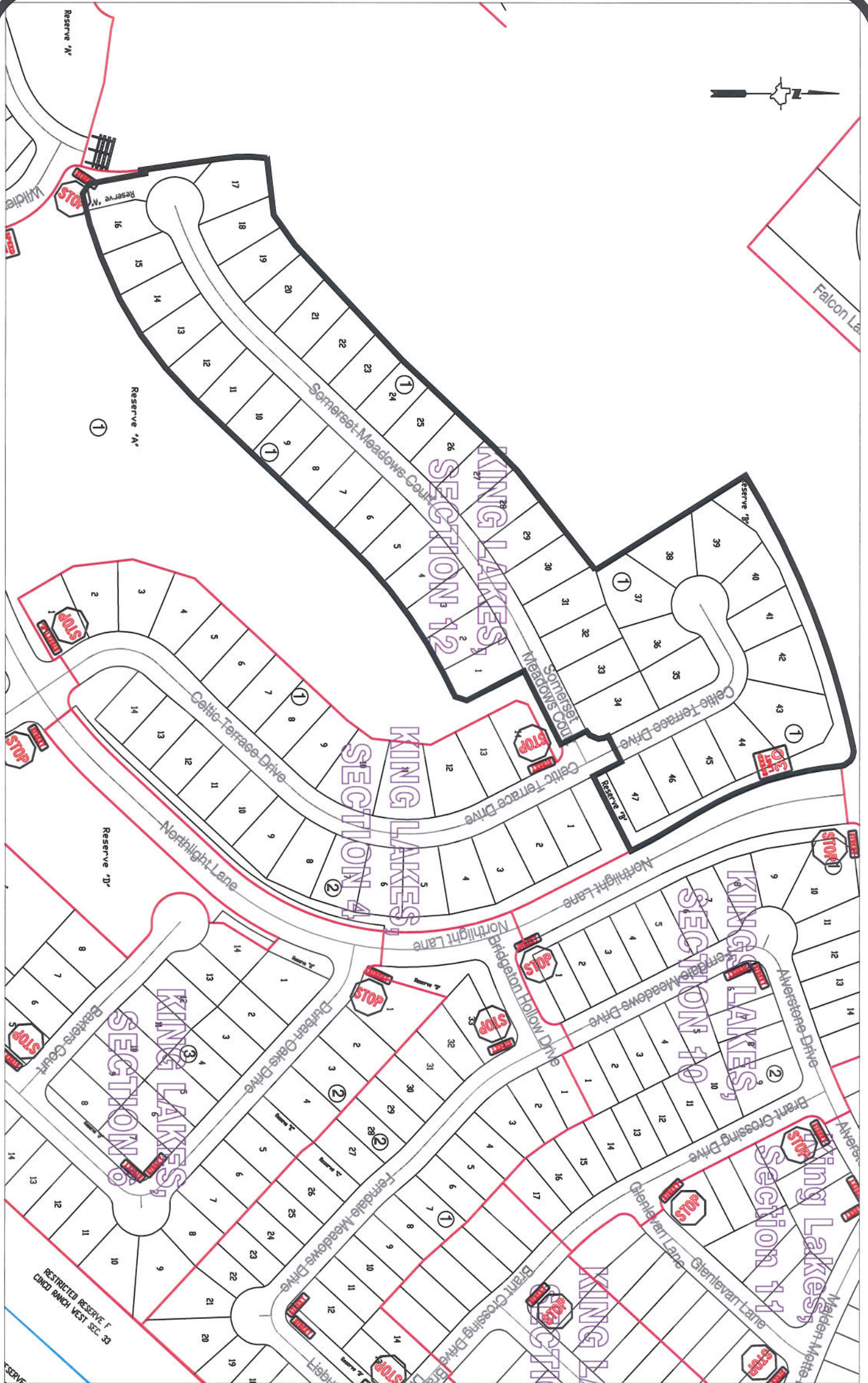
Scale

1" = 200'-0"

**King Lakes, Section 11  
Control Map and  
Traffic Sign Layout**

Fort Bend County Engineering Dept.  
1124 Blume Road  
Rosenberg, Texas 77471





**Note:**

The purpose of this traffic control plan is to establish traffic control for King Lakes, Section 12.

Drawn By: L. Brdecka

Date: 12-21-12

Approved By: Nathan Hatcher

Date: 12-21-12

Scale

1" = 200'-0"

**King Lakes, Section 12  
Control Map and  
Traffic Sign Layout**

Fort Bend County Engineering Dept.  
1124 Blume Road  
Rosenberg, Texas 77471