



FORT BEND COUNTY ENGINEERING

Fort Bend County, Texas

Richard W. Stolleis, P.E.
County Engineer

December 3, 2012

Commissioner Grady Prestage
Fort Bend County Precinct 2
3030 Texas Parkway, Suite 213
Missouri City, Texas 77459

**RE: Winfield Lakes, Section 8 - Traffic Control Plan
Winfield Lakes, Section 16**

Dear Commissioner:

Fort Bend County Engineering has completed and recommends approval of the traffic control plans for the above referenced subdivision. The public hearing date for acceptance of the plans is being scheduled.

A copy of the traffic control plan is attached for your review. If you should have any questions, please give me a call.

Sincerely,

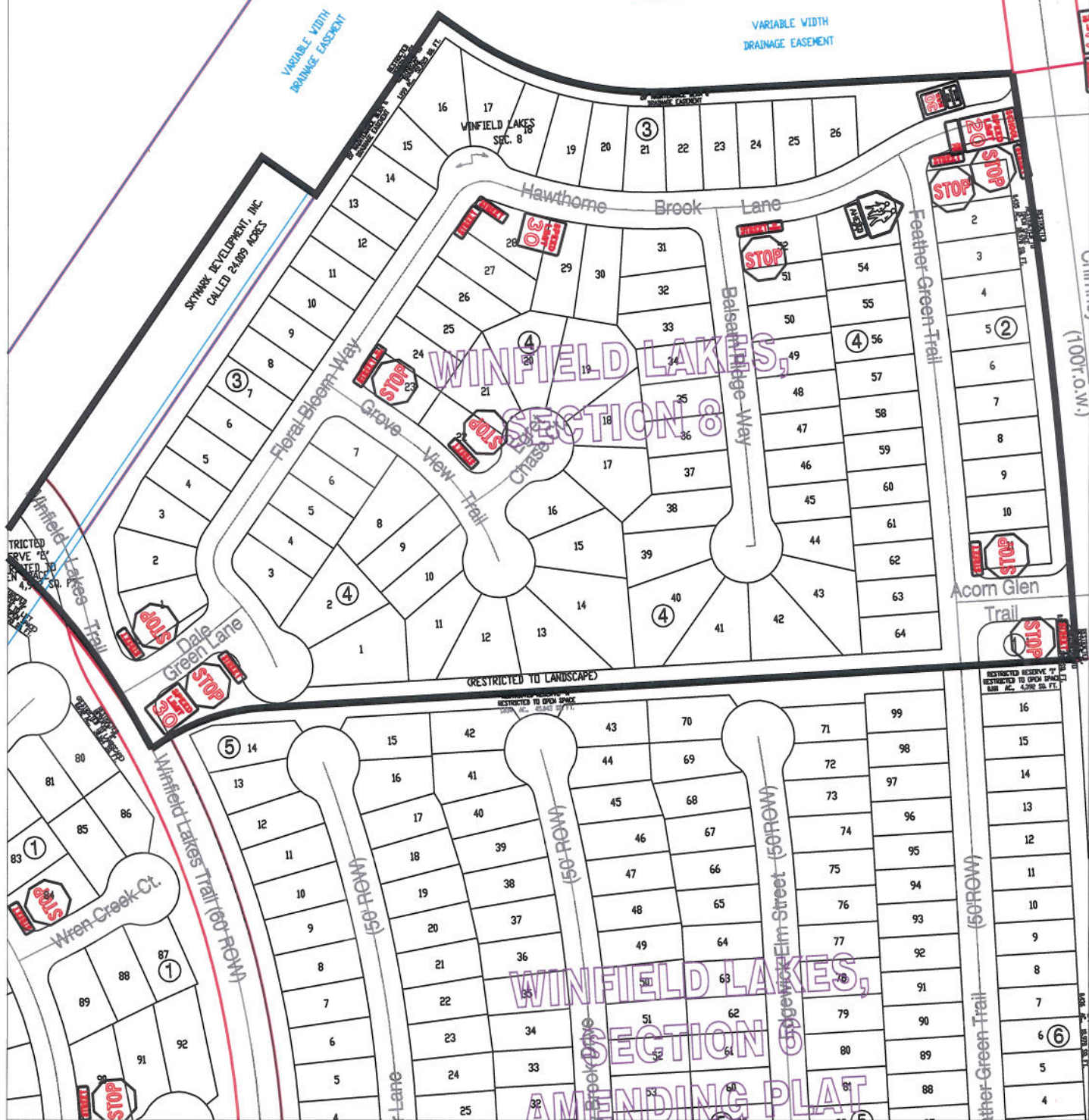
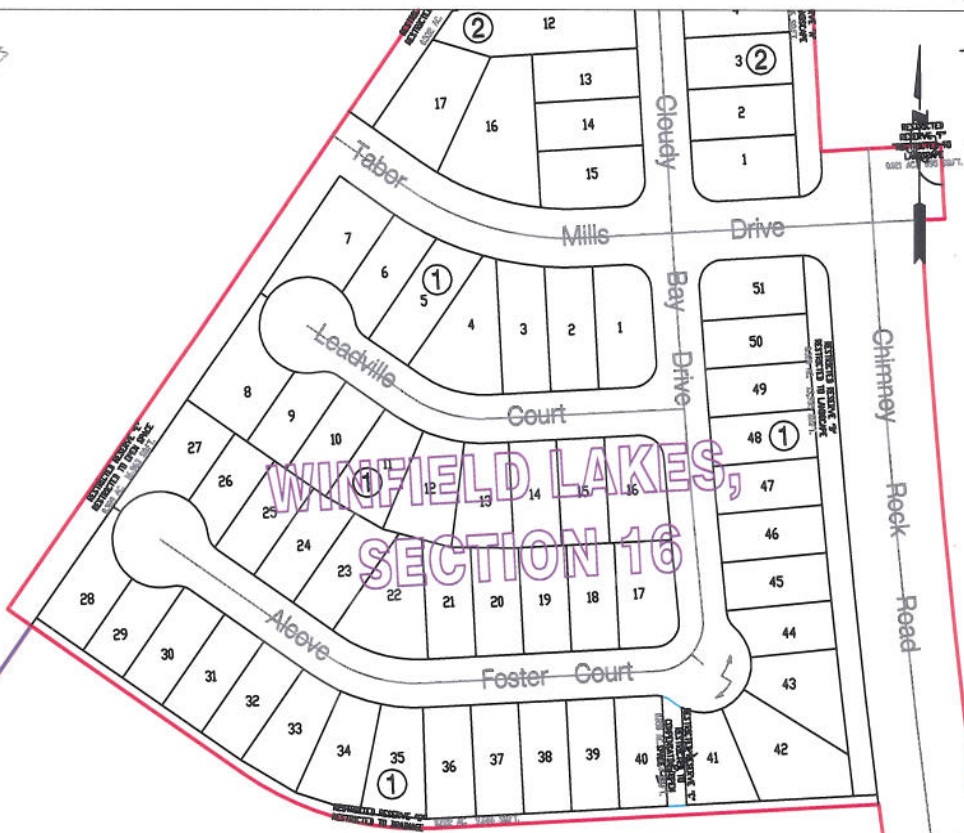
A handwritten signature in blue ink, reading "DeWayne O. Davis".

DeWayne O. Davis, P.E.
Engineer III

DOD/mjs

cc: Judge Robert E. Hebert, County Judge
Marc Grant - FBC Road & Bridge
Marc Grant - Signage Department
File

HANDOVER ESTATES, LTD.
RESERVE OF 47.534 ACRES



Note:

The purpose of this traffic control plan is to establish traffic control for Winfield Lakes, Section 8.

Drawn By: L. Brdecka

Date: 11-30-12

Approved By: DeWayne Davis, P.E.

Date: 11-30-12

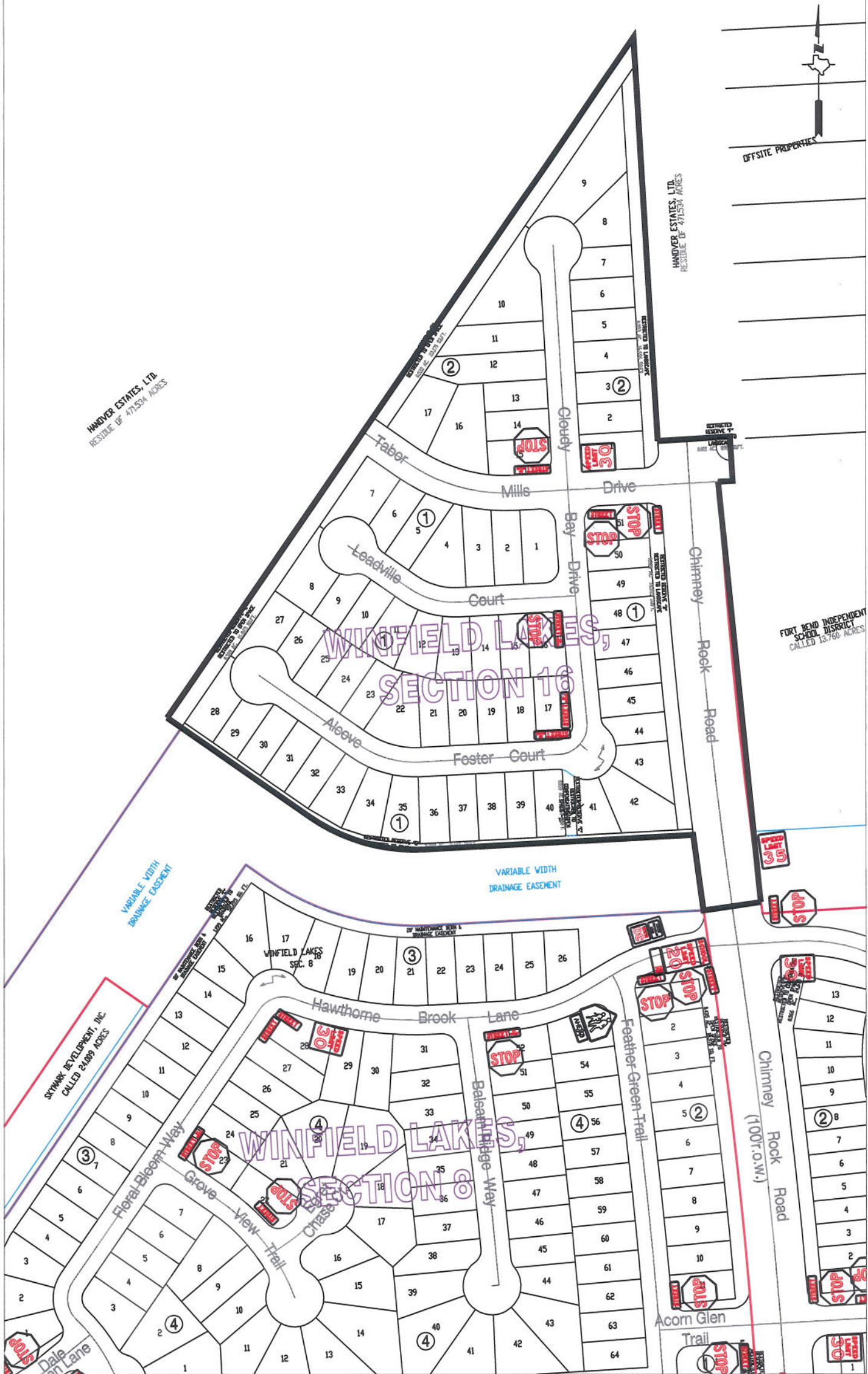
Scale

1" = 200'-0"

Winfield Lakes, Section 8

**Control Map and
Traffic Sign Layout**

Fort Bend County Engineering Dept.
1124 Blume Road
Rosenberg, Texas 77471



Note:

The purpose of this traffic control plan is to establish traffic control for Winfield Lakes, Section 16.

Drawn By: L. Brdecka

Date: 11-30-12

Approved By: DeWayne Davis, P.E.

Date: 11-30-12

Scale

1" = 200'-0"

Winfield Lakes, Section 16

**Control Map and
Traffic Sign Layout**

Fort Bend County Engineering Dept.
1124 Blume Road
Rosenberg, Texas 77471