



FORT BEND COUNTY ENGINEERING

Fort Bend County, Texas

Richard W. Stolleis, P.E.
County Engineer

November 27, 2012

Commissioner James Patterson
Fort Bend County Precinct 4
12919 Dairy Ashford Road
Sugar Land, Texas 77478

**RE: Vintage Trail at Riverstone - Traffic Control Plan
Nandina at Riverstone
Shadow Glen at Riverstone**

Dear Commissioner:

Fort Bend County Engineering has completed and recommends approval of the traffic control plans for the above referenced subdivisions. The public hearing date for acceptance of the plans is being scheduled.

A copy of the traffic control plans is attached for your review. If you should have any questions, please give me a call.

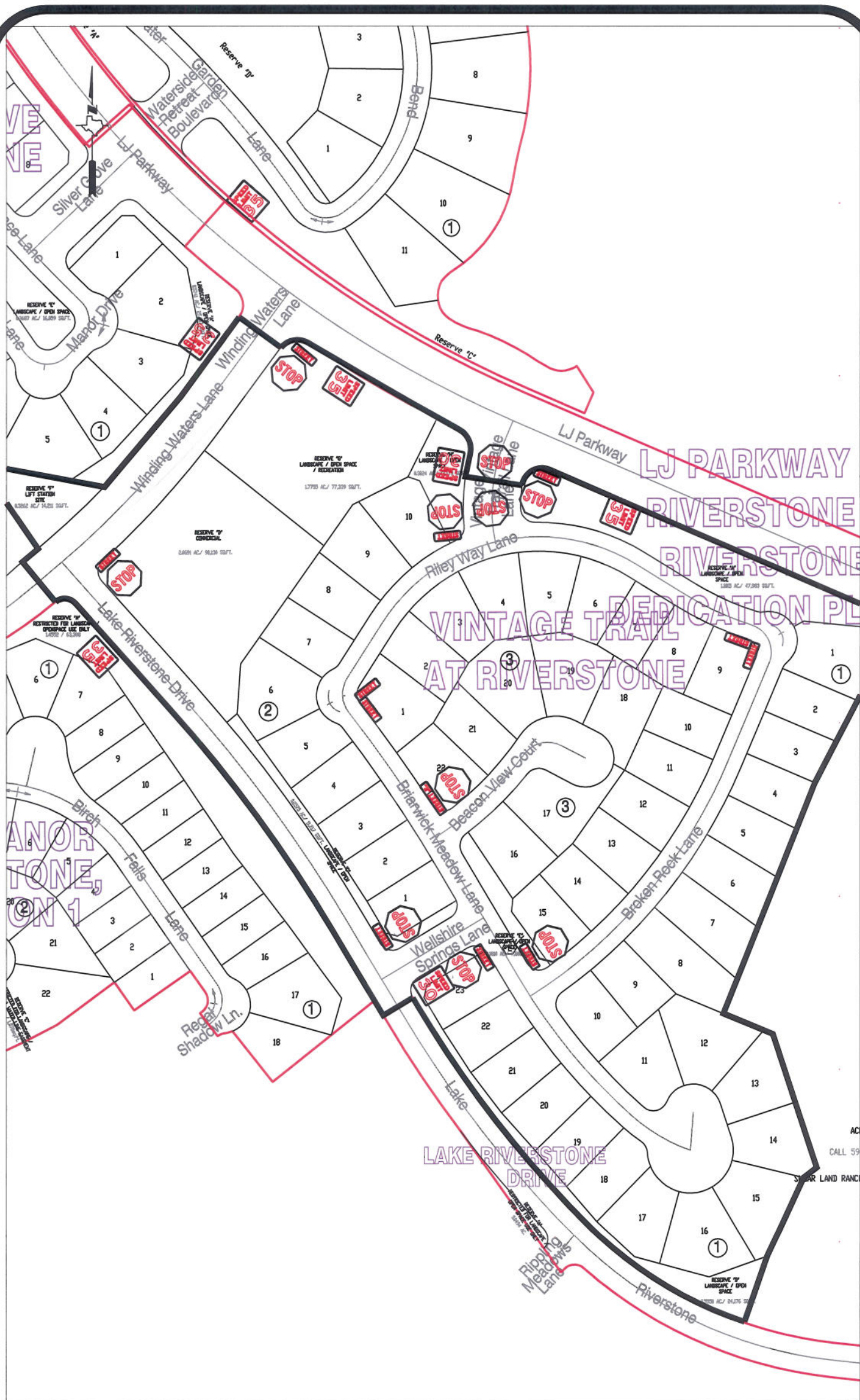
Sincerely,

A handwritten signature in blue ink that reads "Steven L. Evans".

Steven L. Evans
Assistant to County Engineer

SLE/mjs

cc: Judge Robert E. Hebert, County Judge
Marc Grant - FBC Road & Bridge
Marc Grant - Signage Department
File



Note:

The purpose of this traffic control plan is to establish traffic control for Vintage Trail at Riverstone.

Drawn By: L. Brdecka

Date: 11-19-12

Approved By: Steven L. Evans

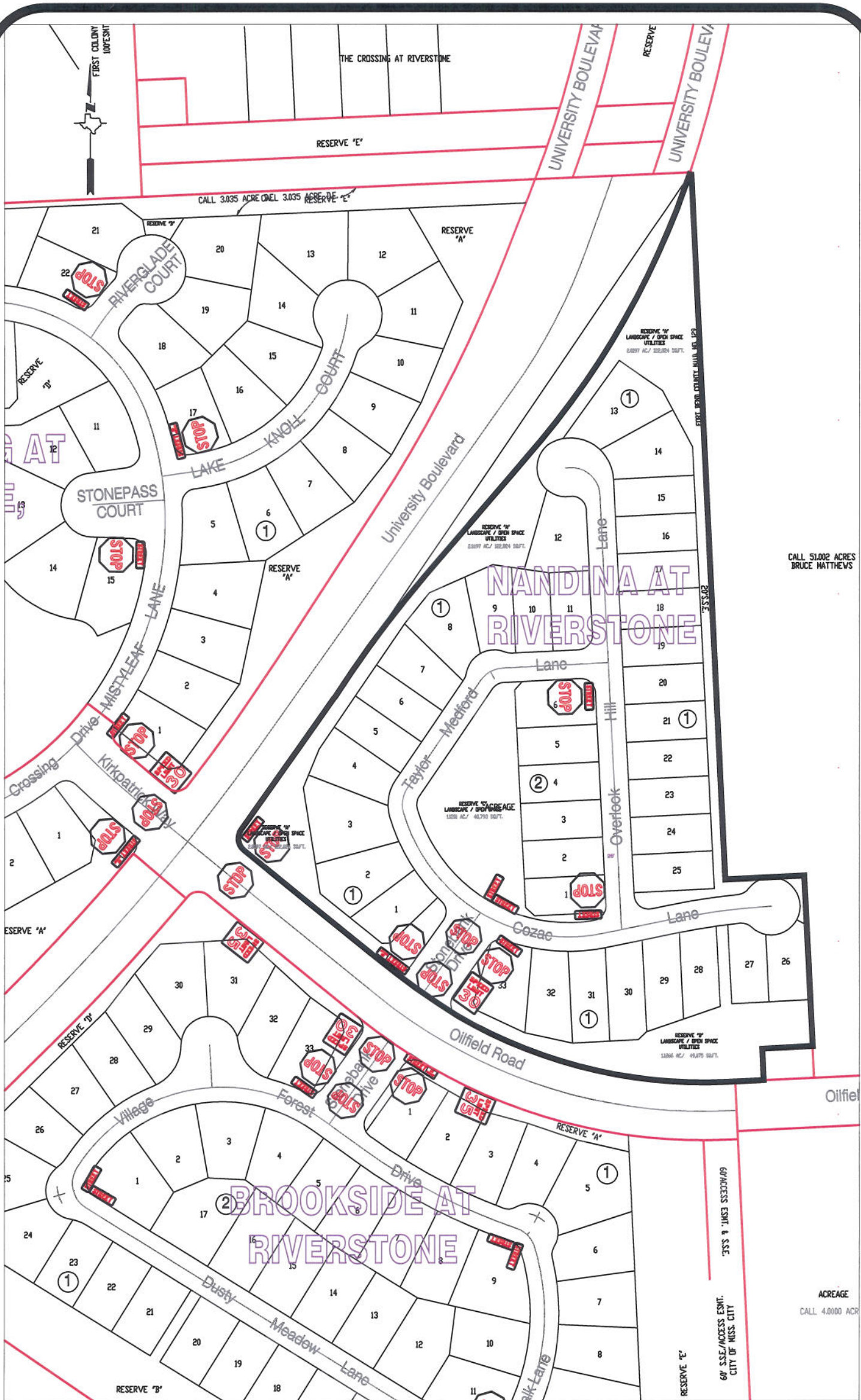
Date: 11-19-12

Scale

1" = 200'-0"

**Vintage Trail at Riverstone
Control Map and
Traffic Sign Layout**

Fort Bend County Engineering Dept.
1124 Blume Road
Rosenberg, Texas 77471



Note:

The purpose of this traffic control plan is to establish traffic control for Nandina at Riverstone.

Drawn By: L. Brdecka

Date: 11-19-12

Approved By: Steven L. Evans

Date: 11-19-12

Scale

1" = 200'-0"

**Nandina at Riverstone
Control Map and
Traffic Sign Layout**

Fort Bend County Engineering Dept.
1124 Blume Road
Rosenberg, Texas 77471



Note:

The purpose of this traffic control plan is to establish traffic control for Shadow Glen at Riverstone.

Drawn By: L. Brdecka

Date: 11-19-12

Approved By: Steven L. Evans

Date: 11-19-12

Scale

1" = 200'-0"

Shadow Glen at Riverstone

**Control Map and
Traffic Sign Layout**

Fort Bend County Engineering Dept.
1124 Blume Road
Rosenberg, Texas 77471