

PLAT RECORDING SHEET

PLAT NAME: Sienna Village of Bees Creek, Sec. 12

PLAT NO: _____

ACREAGE: 8.581

LEAGUE: Moses Shipman League

ABSTRACT NUMBER: 86

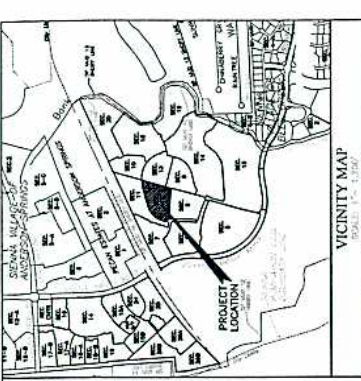
NUMBER OF BLOCKS: 1

NUMBER OF LOTS: 14

NUMBER OF RESERVES: 4

OWNERS: Sienna/Johnson North, L.P.

(DEPUTY CLERK)



LOT	AREA	SOFT	TYPE
1	1.21	0.00	RESERVE
2	1.21	0.00	RESERVE
3	1.21	0.00	RESERVE
4	1.21	0.00	RESERVE
5	1.21	0.00	RESERVE
6	1.21	0.00	RESERVE
7	1.21	0.00	RESERVE
8	1.21	0.00	RESERVE
9	1.21	0.00	RESERVE
10	1.21	0.00	RESERVE
11	1.21	0.00	RESERVE
12	1.21	0.00	RESERVE
13	1.21	0.00	RESERVE
14	1.21	0.00	RESERVE
15	1.21	0.00	RESERVE
16	1.21	0.00	RESERVE
17	1.21	0.00	RESERVE
18	1.21	0.00	RESERVE
19	1.21	0.00	RESERVE
20	1.21	0.00	RESERVE
21	1.21	0.00	RESERVE
22	1.21	0.00	RESERVE
23	1.21	0.00	RESERVE
24	1.21	0.00	RESERVE
25	1.21	0.00	RESERVE
26	1.21	0.00	RESERVE
27	1.21	0.00	RESERVE
28	1.21	0.00	RESERVE
29	1.21	0.00	RESERVE
30	1.21	0.00	RESERVE
31	1.21	0.00	RESERVE
32	1.21	0.00	RESERVE
33	1.21	0.00	RESERVE
34	1.21	0.00	RESERVE
35	1.21	0.00	RESERVE
36	1.21	0.00	RESERVE
37	1.21	0.00	RESERVE
38	1.21	0.00	RESERVE
39	1.21	0.00	RESERVE
40	1.21	0.00	RESERVE
41	1.21	0.00	RESERVE
42	1.21	0.00	RESERVE
43	1.21	0.00	RESERVE
44	1.21	0.00	RESERVE
45	1.21	0.00	RESERVE
46	1.21	0.00	RESERVE
47	1.21	0.00	RESERVE
48	1.21	0.00	RESERVE
49	1.21	0.00	RESERVE
50	1.21	0.00	RESERVE
51	1.21	0.00	RESERVE
52	1.21	0.00	RESERVE
53	1.21	0.00	RESERVE
54	1.21	0.00	RESERVE
55	1.21	0.00	RESERVE
56	1.21	0.00	RESERVE
57	1.21	0.00	RESERVE
58	1.21	0.00	RESERVE
59	1.21	0.00	RESERVE
60	1.21	0.00	RESERVE
61	1.21	0.00	RESERVE
62	1.21	0.00	RESERVE
63	1.21	0.00	RESERVE
64	1.21	0.00	RESERVE
65	1.21	0.00	RESERVE
66	1.21	0.00	RESERVE
67	1.21	0.00	RESERVE
68	1.21	0.00	RESERVE
69	1.21	0.00	RESERVE
70	1.21	0.00	RESERVE
71	1.21	0.00	RESERVE
72	1.21	0.00	RESERVE
73	1.21	0.00	RESERVE
74	1.21	0.00	RESERVE
75	1.21	0.00	RESERVE
76	1.21	0.00	RESERVE
77	1.21	0.00	RESERVE
78	1.21	0.00	RESERVE
79	1.21	0.00	RESERVE
80	1.21	0.00	RESERVE
81	1.21	0.00	RESERVE
82	1.21	0.00	RESERVE
83	1.21	0.00	RESERVE
84	1.21	0.00	RESERVE
85	1.21	0.00	RESERVE
86	1.21	0.00	RESERVE
87	1.21	0.00	RESERVE
88	1.21	0.00	RESERVE
89	1.21	0.00	RESERVE
90	1.21	0.00	RESERVE
91	1.21	0.00	RESERVE
92	1.21	0.00	RESERVE
93	1.21	0.00	RESERVE
94	1.21	0.00	RESERVE
95	1.21	0.00	RESERVE
96	1.21	0.00	RESERVE
97	1.21	0.00	RESERVE
98	1.21	0.00	RESERVE
99	1.21	0.00	RESERVE
100	1.21	0.00	RESERVE

SIENNA
VILLAGE OF BEES CREEK
SECTION TWELVE

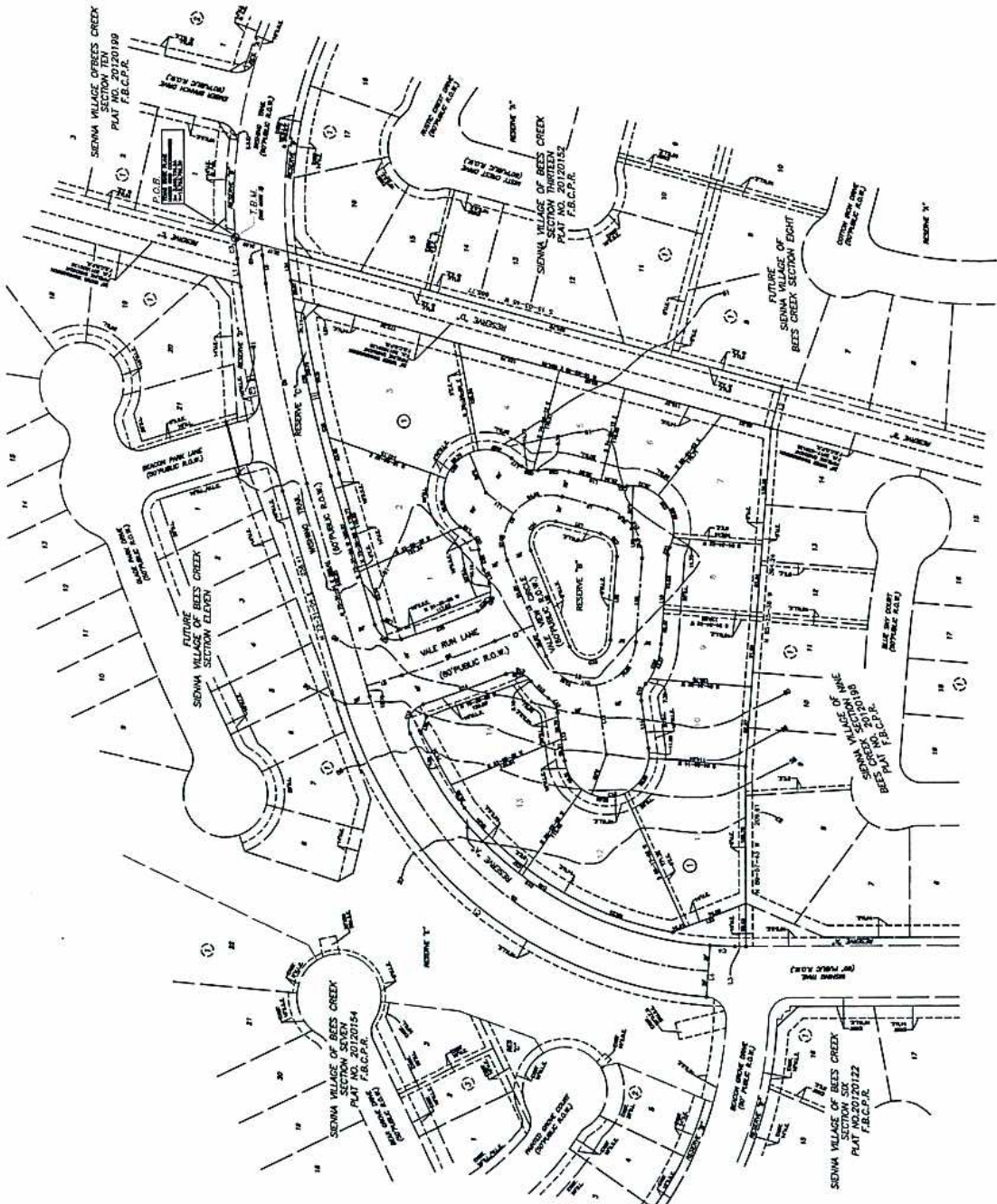
A SUBDIVISION OF 8.451 ACRES OF LAND SITUATED IN THE
MOSES SHIPMAN LEAGUE, ABSTRACT 86,
FORT BEND COUNTY, TEXAS.

14 LOTS 4 RESERVES (1.201 ACRES) 1 BLOCK
SEPTEMBER 25, 2012 JOB NO. 1194-1312-309

OWNERS:
SIENNA/JOHNSON NORTH, L.P.
MICHAEL J. SMITH, VICE PRESIDENT/GENERAL MANAGER
5777 SIENNA PARKWAY, SUITE 100, MESSOUR CITY, TEXAS 77459
PH. (281) 778-7777

ENGINEER:
LJA Engineering Inc.
2929 Briarpark Drive
Suite 600
Houston, Texas 77042
Phone 713.953.5200
Fax 713.953.5026
FRN # F-1386

DAVID W. FOSKAS, P.E.
REGISTERED PROFESSIONAL LAND SURVEYOR
TEXAS REGISTRATION NO. 4797



RESERVE	AREA	SOFT	TYPE
1	1.21	0.00	RESERVE
2	1.21	0.00	RESERVE
3	1.21	0.00	RESERVE
4	1.21	0.00	RESERVE
5	1.21	0.00	RESERVE
6	1.21	0.00	RESERVE
7	1.21	0.00	RESERVE
8	1.21	0.00	RESERVE
9	1.21	0.00	RESERVE
10	1.21	0.00	RESERVE
11	1.21	0.00	RESERVE
12	1.21	0.00	RESERVE
13	1.21	0.00	RESERVE
14	1.21	0.00	RESERVE
15	1.21	0.00	RESERVE
16	1.21	0.00	RESERVE
17	1.21	0.00	RESERVE
18	1.21	0.00	RESERVE
19	1.21	0.00	RESERVE
20	1.21	0.00	RESERVE
21	1.21	0.00	RESERVE
22	1.21	0.00	RESERVE
23	1.21	0.00	RESERVE
24	1.21	0.00	RESERVE
25	1.21	0.00	RESERVE
26	1.21	0.00	RESERVE
27	1.21	0.00	RESERVE
28	1.21	0.00	RESERVE
29	1.21	0.00	RESERVE
30	1.21	0.00	RESERVE
31	1.21	0.00	RESERVE
32	1.21	0.00	RESERVE
33	1.21	0.00	RESERVE
34	1.21	0.00	RESERVE
35	1.21	0.00	RESERVE
36	1.21	0.00	RESERVE
37	1.21	0.00	RESERVE
38	1.21	0.00	RESERVE
39	1.21	0.00	RESERVE
40	1.21	0.00	RESERVE
41	1.21	0.00	RESERVE
42	1.21	0.00	RESERVE
43	1.21	0.00	RESERVE
44	1.21	0.00	RESERVE
45	1.21	0.00	RESERVE
46	1.21	0.00	RESERVE
47	1.21	0.00	RESERVE
48	1.21	0.00	RESERVE
49	1.21	0.00	RESERVE
50	1.21	0.00	RESERVE
51	1.21	0.00	RESERVE
52	1.21	0.00	RESERVE
53	1.21	0.00	RESERVE
54	1.21	0.00	RESERVE
55	1.21	0.00	RESERVE
56	1.21	0.00	RESERVE
57	1.21	0.00	RESERVE
58	1.21	0.00	RESERVE
59	1.21	0.00	RESERVE
60	1.21	0.00	RESERVE
61	1.21	0.00	RESERVE
62	1.21	0.00	RESERVE
63	1.21	0.00	RESERVE
64	1.21	0.00	RESERVE
65	1.21	0.00	RESERVE
66	1.21	0.00	RESERVE
67	1.21	0.00	RESERVE
68	1.21	0.00	RESERVE
69	1.21	0.00	RESERVE
70	1.21	0.00	RESERVE
71	1.21	0.00	RESERVE
72	1.21	0.00	RESERVE
73	1.21	0.00	RESERVE
74	1.21	0.00	RESERVE
75	1.21	0.00	RESERVE
76	1.21	0.00	RESERVE
77	1.21	0.00	RESERVE
78	1.21	0.00	RESERVE
79	1.21	0.00	RESERVE
80	1.21	0.00	RESERVE
81	1.21	0.00	RESERVE
82	1.21	0.00	RESERVE
83	1.21	0.00	RESERVE
84	1.21	0.00	RESERVE
85	1.21	0.00	RESERVE
86	1.21	0.00	RESERVE
87	1.21	0.00	RESERVE
88	1.21	0.00	RESERVE
89	1.21	0.00	RESERVE
90	1.21	0.00	RESERVE
91	1.21	0.00	RESERVE
92	1.21	0.00	RESERVE
93	1.21	0.00	RESERVE
94	1.21	0.00	RESERVE
95	1.21	0.00	RESERVE
96	1.21	0.00	RESERVE
97	1.21	0.00	RESERVE
98	1.21	0.00	RESERVE
99	1.21	0.00	RESERVE
100	1.21	0.00	RESERVE