



FORT BEND COUNTY ENGINEERING

Fort Bend County, Texas

Richard W. Stolleis, P.E.
County Engineer

October 1, 2012

Commissioner James Patterson
Fort Bend County Precinct 4
12919 Dairy Ashford Road
Sugar Land, Texas 77478

**RE: Traffic Control Plan -
Meadow Ranch Parkway from West Bellfort Road Street Dedication,
Meadow Ranch Parkway Extension Street Dedication**

Dear Commissioner:

Fort Bend County Engineering has completed and recommends approval of the traffic control plans for the above referenced subdivisions. The public hearing date for acceptance of the plans is being scheduled.

A copy of the traffic control plans are attached for your review. If you should have any questions, please give me a call.

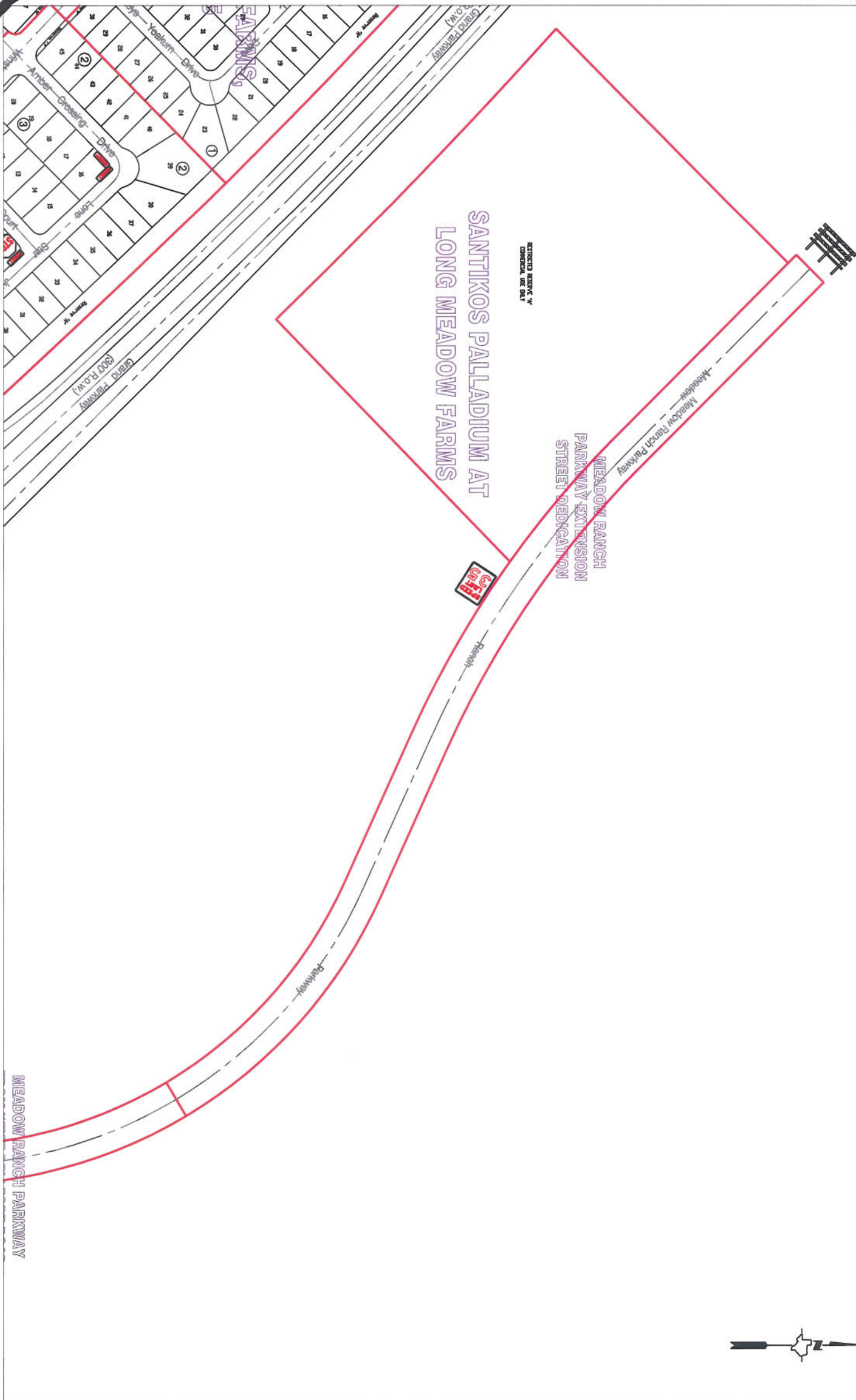
Sincerely,

A handwritten signature in black ink, reading "Steven L. Evans".

Steven L. Evans
Assistant to County Engineer

SLE/mjs

cc: Judge Robert E. Hebert, County Judge
Marc Grant - FBC Road & Bridge
Marc Grant - Signage Department
File



Note:

The purpose of this traffic control plan is to establish traffic control for Meadow Ranch Parkway Extension STD.

Drawn By: L. Brdecka

Date: 10-1-12

Approved By: Steve Evans

Date: 10-1-12

Scale

1" = 300'-0"

**Meadow Ranch Parkway
Extension STD
Control Map and Traffic Sign
Layout**

Fort Bend County Engineering Dept.
1124 Blume Road
Rosenberg, Texas 77471



The purpose of this traffic control plan is to establish traffic control for Meadow Ranch Parkway From West Belfort Road STD.

1" = 200'-0"

Fort Bend County Engineering Dept.
1124 Blume Road
Rosenberg, Texas 77471

RESTRICTED RESERVE "A"
COMMERCIAL USE ONLY