

FORT BEND COUNTY ENGINEERING

Fort Bend County, Texas

Richard W. Stolleis, P.E.
County Engineer

September 20, 2012

Commissioner W. A. "Andy" Meyers
Fort Bend County Precinct 3
22333 Grand Corner Drive
Katy, Texas 77494

RE: Traffic/Safety Study-Firethorne, Section 7 (Stonestead Drive at Chalet Ridge Drive)

Dear Commissioner Meyers:

As per your request, Fort Bend County Engineering Department (FBCED) has conducted a traffic study at the above referenced intersection. The purpose of this study was to determine if the sight distances of the intersection were adequate.

The AASHTO Green Book (American Association of State Highway and Transportation Officials) has the procedure to determine how much sight distance is required at an intersection. It was determined using the AASHTO Green Book procedure that the motorist on the north side of the intersection do not have enough sight distance to see oncoming traffic from the east due to a fence erected on a residential lot. Therefore, FBCED recommends a multi-way stop be installed at the above mentioned intersection.

A copy of the traffic control plan is attached for your review. If there are no objections to the plan, it will be scheduled on the next available Commissioner's Court agenda.

If you should have any questions, please give me a call. 281-633-7537.

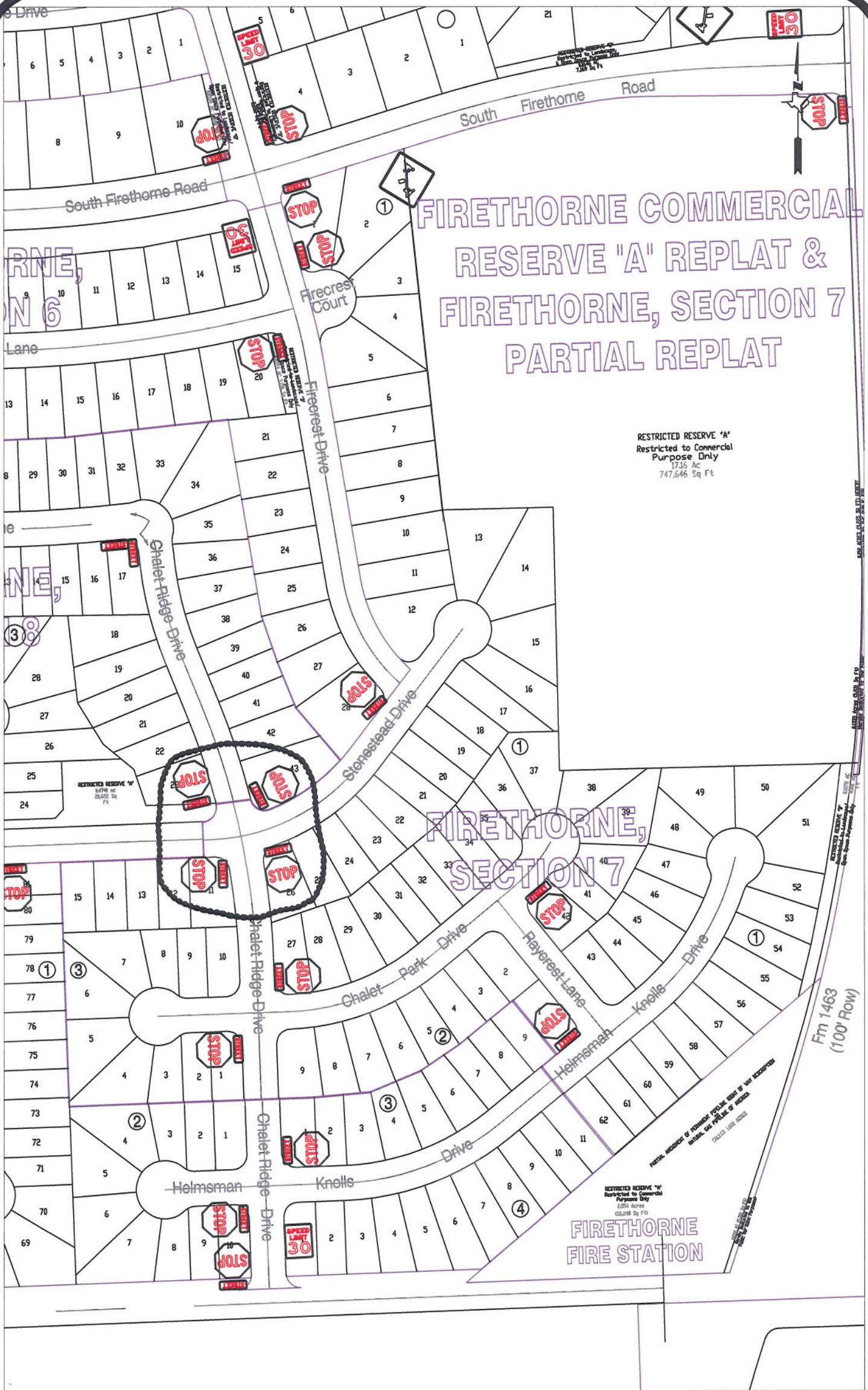
Sincerely,

A handwritten signature in blue ink, appearing to read "Joshua Netardus".

Joshua Netardus, EIT
Engineer I

JN/mjs

cc: Judge Robert E. Hebert, County Judge
Marc Grant - FBC Road & Bridge
Marc Grant - Signage Department
File



Note:

The purpose of this traffic control plan is to revise traffic control for Firethorne, Section 7 with the installation of a multi-way stop at the intersection of Stonestead Drive and Chalet Ridge Drive.

Drawn By: L. Brdecka

Date: 9-20-12

Approved By: Joshua Netardus

Date: 9-20-12

Scale

1" = 200'-0"

(Revised) Firethorne, Section 7
Control Map and
Traffic Sign Layout

Fort Bend County Engineering Dept.
1124 Blume Road
Rosenberg, Texas 77471