



FORT BEND COUNTY ENGINEERING

Fort Bend County, Texas

Richard W. Stolleis, P.E.
County Engineer

August 21, 2012

Commissioner W. A. "Andy" Meyers
Fort Bend County Precinct 3
22333 Grand Corner Drive
Katy, Texas 77494

**RE: Greenbusch Road (Mobility Bond Project #732), (changed to Westheimer Parkway),
from Falcon Landing Boulevard to Pin Oak Road**

Dear Commissioner:

Fort Bend County Engineering has completed and recommends approval of the traffic control plan for the above referenced mobility project. The public hearing date for acceptance of the plan is being scheduled.

A copy of the traffic control plan is attached for your review. If you should have any questions, please give me a call.

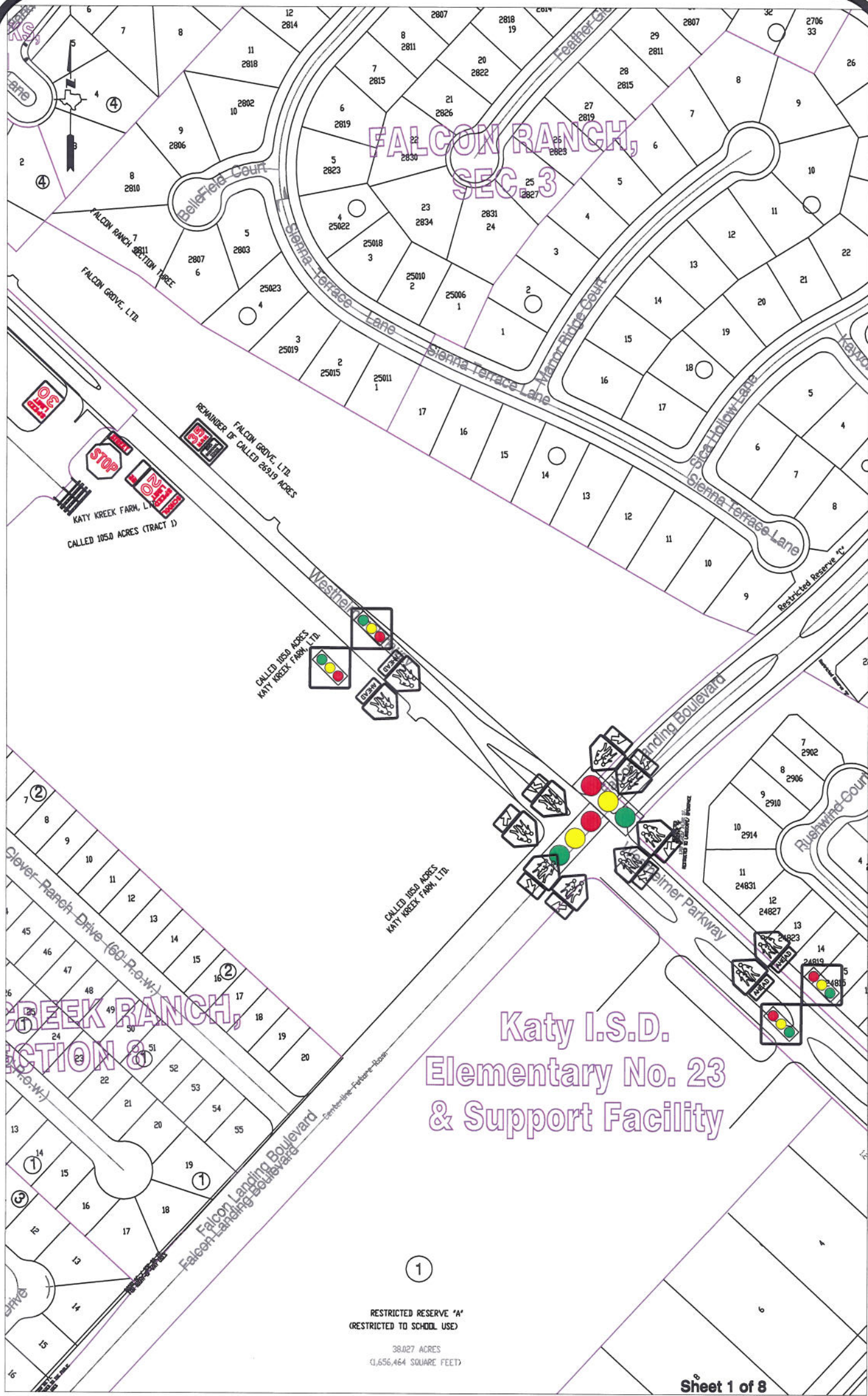
Sincerely,

A handwritten signature in black ink, appearing to read "Nathan D. Hatcher".

Nathan D. Hatcher
Assistant to County Engineer

NDH/mjs

cc: Judge Robert E. Hebert, County Judge
Marc Grant - FBC Road & Bridge
Marc Grant - Signage Department
File



Katy I.S.D.
 Elementary No. 23
 & Support Facility

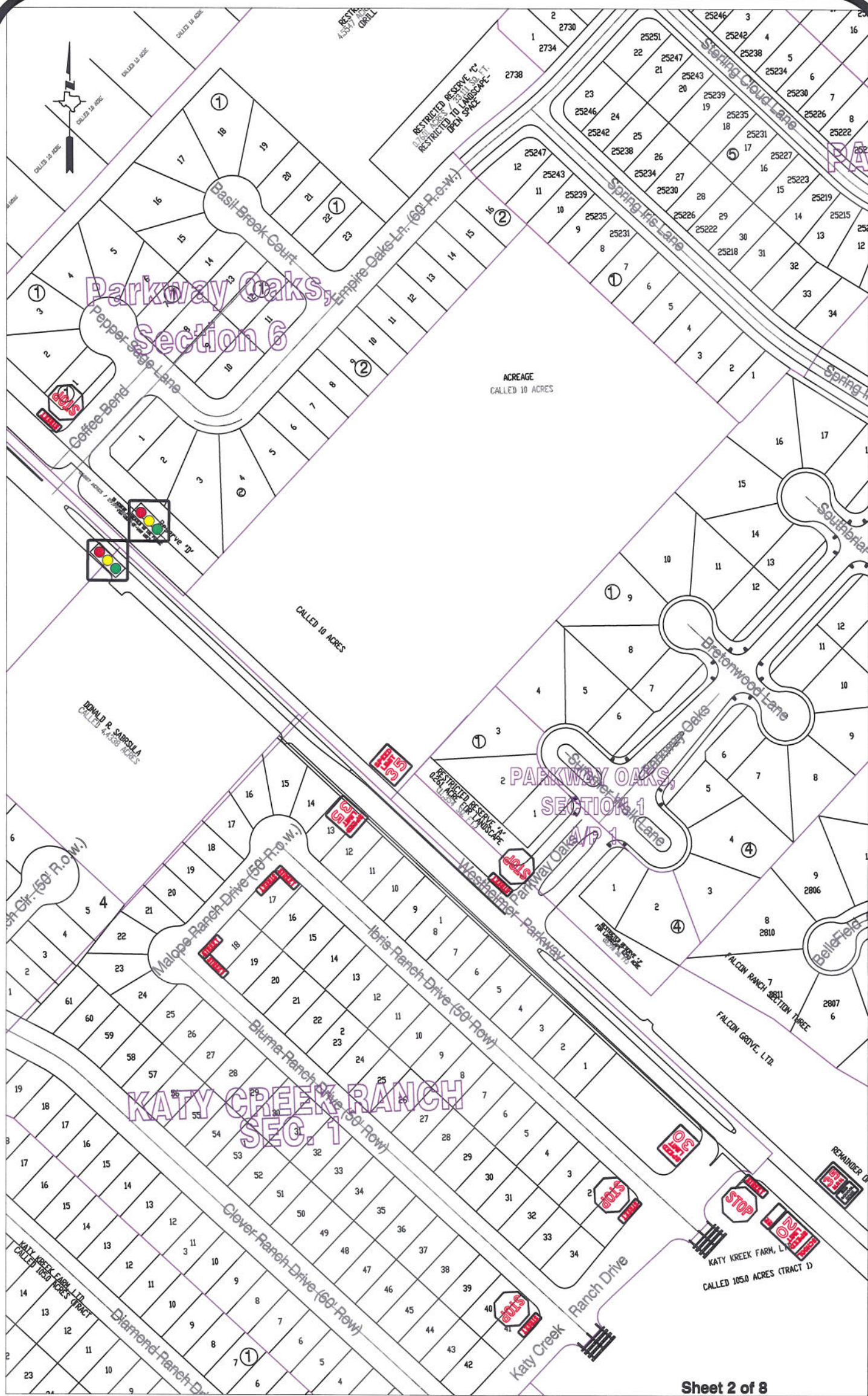
RESTRICTED RESERVE 'A'
 (RESTRICTED TO SCHOOL USE)

38.027 ACRES
 (1,656,464 SQUARE FEET)

Note:
 The purpose of this traffic control plan is to establish traffic control for Westheimer Parkway from Falcon Landing Boulevard to Pin Oak.

Drawn By: L. Brdecka
 Date: 8-15-12
 Approved By: Nathan Hatcher
 Date: 8-15-12
 Scale
 1" = 200'-0"

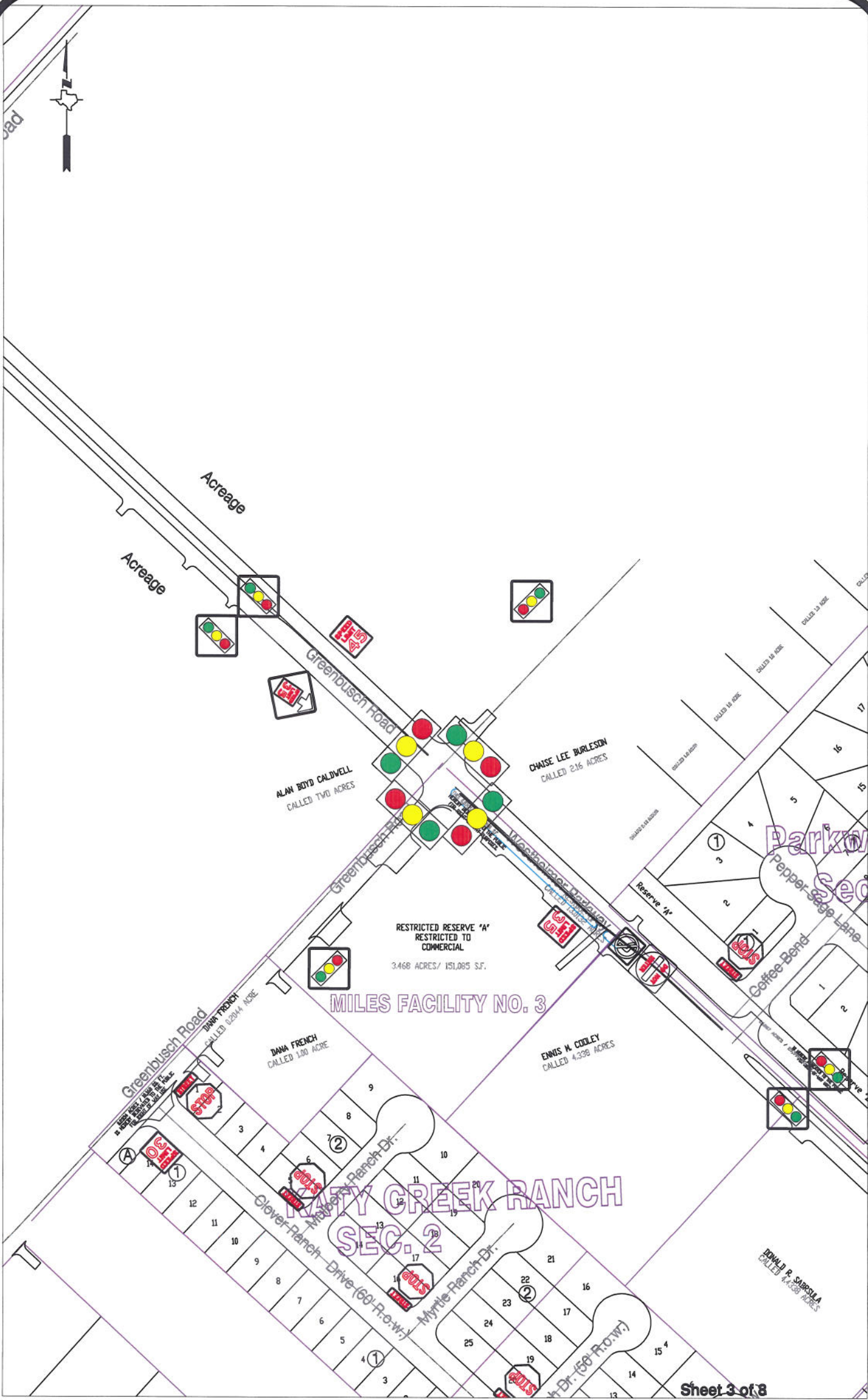
Westheimer Parkway from Falcon Landing Boulevard to Pin Oak Control Map and Traffic Sign Layout
 Fort Bend County Engineering Dept.
 1124 Blume Road
 Rosenberg, Texas 77471



Note:
 The purpose of this traffic control plan is to establish traffic control for Westheimer Parkway from Falcon Landing Boulevard to Pin Oak.

Drawn By: L. Brdecka
 Date: 8-15-12
 Approved By: Nathan Hatcher
 Date: 8-15-12
 Scale
 1" = 200'-0"

Westheimer Parkway from Falcon Landing Boulevard to Pin Oak Control Map and Traffic Sign Layout
 Fort Bend County Engineering Dept.
 1124 Blume Road
 Rosenberg, Texas 77471

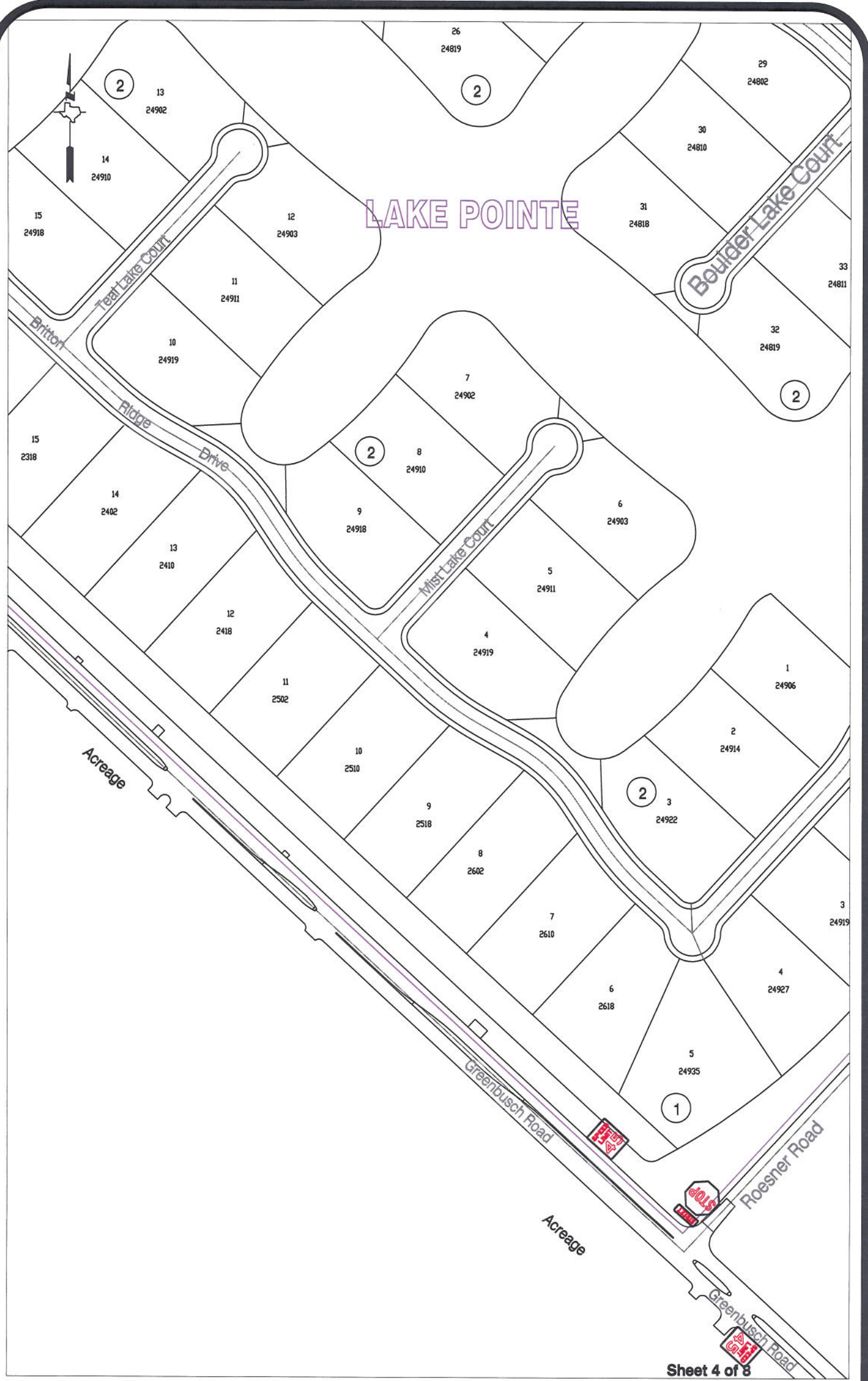


Sheet 3 of 8

Note:
 The purpose of this traffic control plan is to establish traffic control for Westheimer Parkway from Falcon Landing Boulevard to Pin Oak.

Drawn By: L. Brdecka
 Date: 8-15-12
 Approved By: Nathan Hatcher
 Date: 8-15-12
 Scale
 1" = 200'-0"

Westheimer Parkway from Falcon Landing Boulevard to Pin Oak Control Map and Traffic Sign Layout
 Fort Bend County Engineering Dept.
 1124 Blume Road
 Rosenberg, Texas 77471



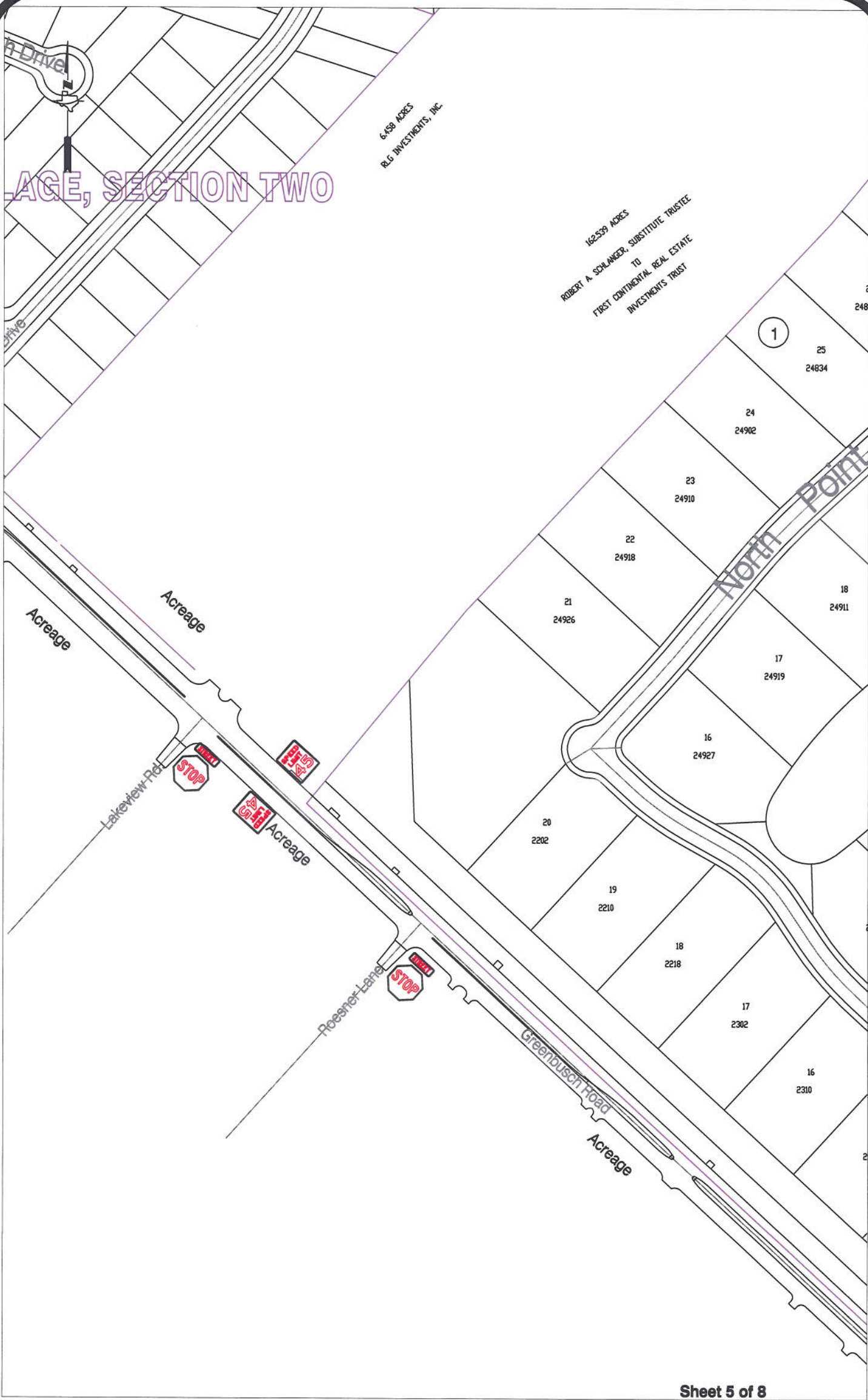
LAKE POINTE

Note:
 The purpose of this traffic control plan is to establish traffic control for Westheimer Parkway from Falcon Landing Boulevard to Pin Oak.

Drawn By: L. Brdecka
 Date: 8-15-12
 Approved By: Nathan Hatcher
 Date: 8-15-12
 Scale
 1" = 200'-0"

Westheimer Parkway from Falcon Landing Boulevard to Pin Oak Control Map and Traffic Sign Layout
 Fort Bend County Engineering Dept.
 1124 Blume Road
 Rosenberg, Texas 77471

AGE, SECTION TWO



Sheet 5 of 8

Note:

The purpose of this traffic control plan is to establish traffic control for Westheimer Parkway from Falcon Landing Boulevard to Pin Oak.

Drawn By: L. Brdecka

Date: 8-15-12

Approved By: Nathan Hatcher

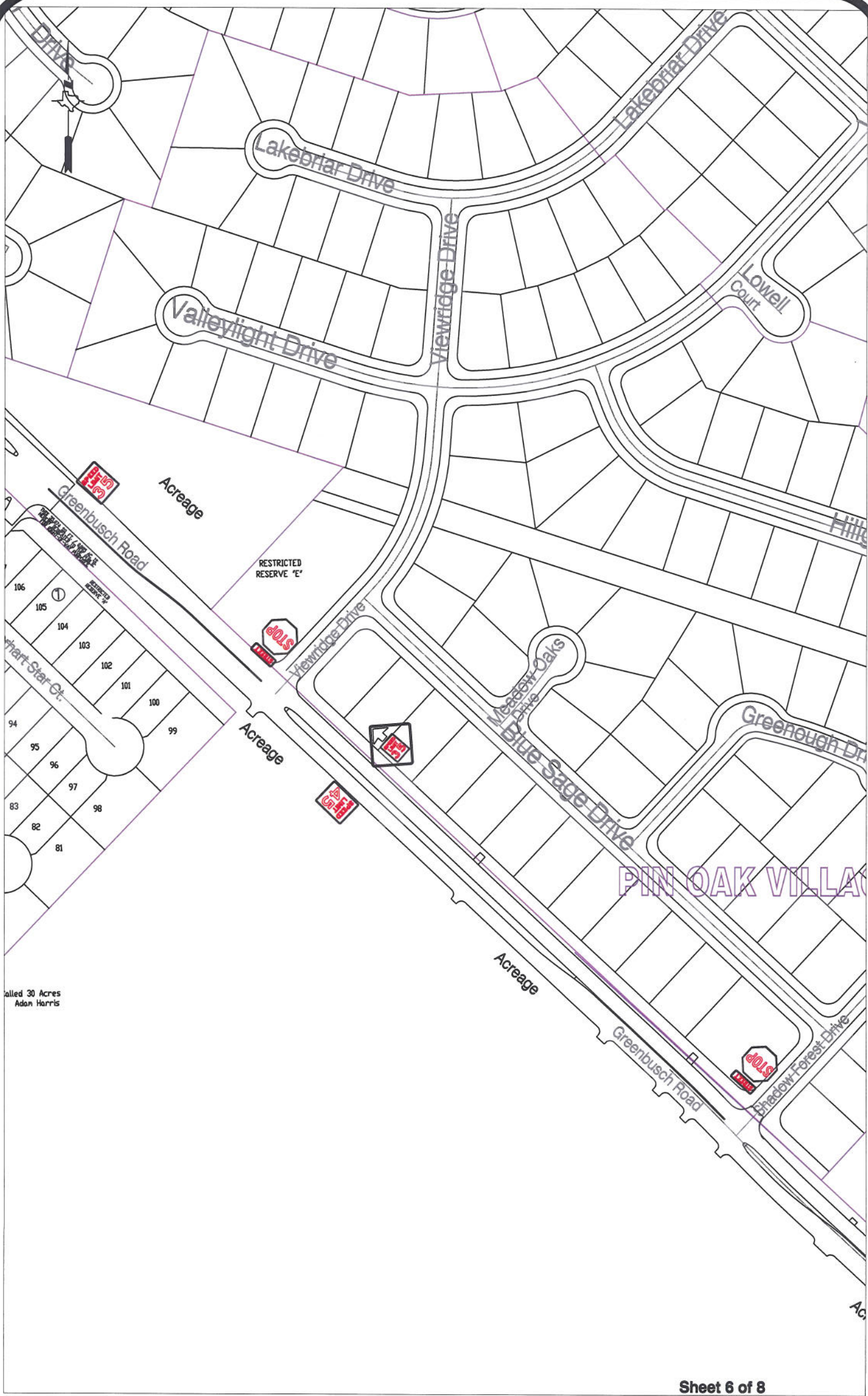
Date: 8-15-12

Scale

1" = 200'-0"

Westheimer Parkway from Falcon Landing Boulevard to Pin Oak Control Map and Traffic Sign Layout

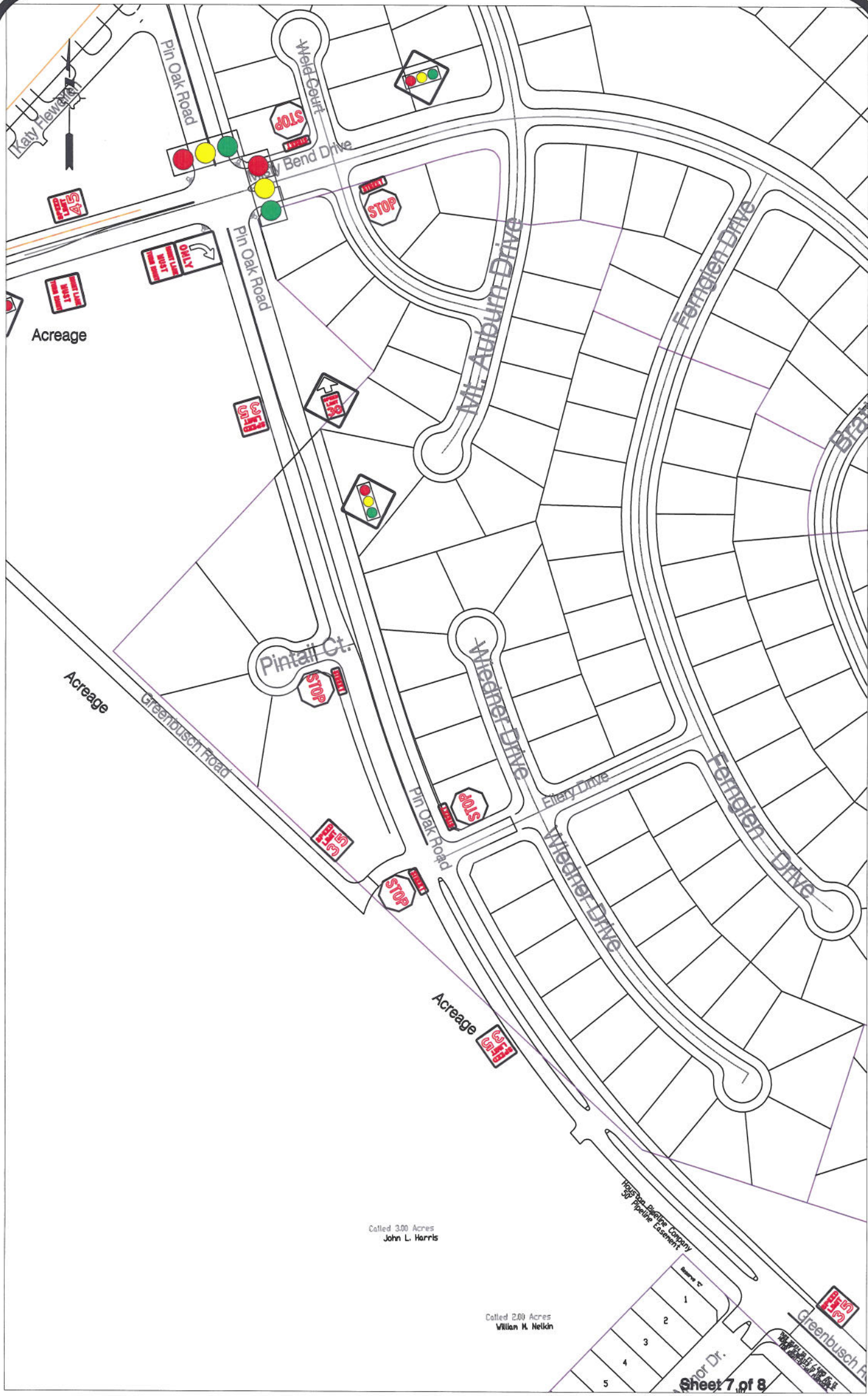
Fort Bend County Engineering Dept.
1124 Blume Road
Rosenberg, Texas 77471



Note:
 The purpose of this traffic control plan is to establish traffic control for Westheimer Parkway from Falcon Landing Boulevard to Pin Oak.

Drawn By: L. Brdecka
 Date: 8-15-12
 Approved By: Nathan Hatcher
 Date: 8-15-12
 Scale
 1" = 200'-0"

Westheimer Parkway from Falcon Landing Boulevard to Pin Oak Control Map and Traffic Sign Layout
 Fort Bend County Engineering Dept.
 1124 Blume Road
 Rosenberg, Texas 77471



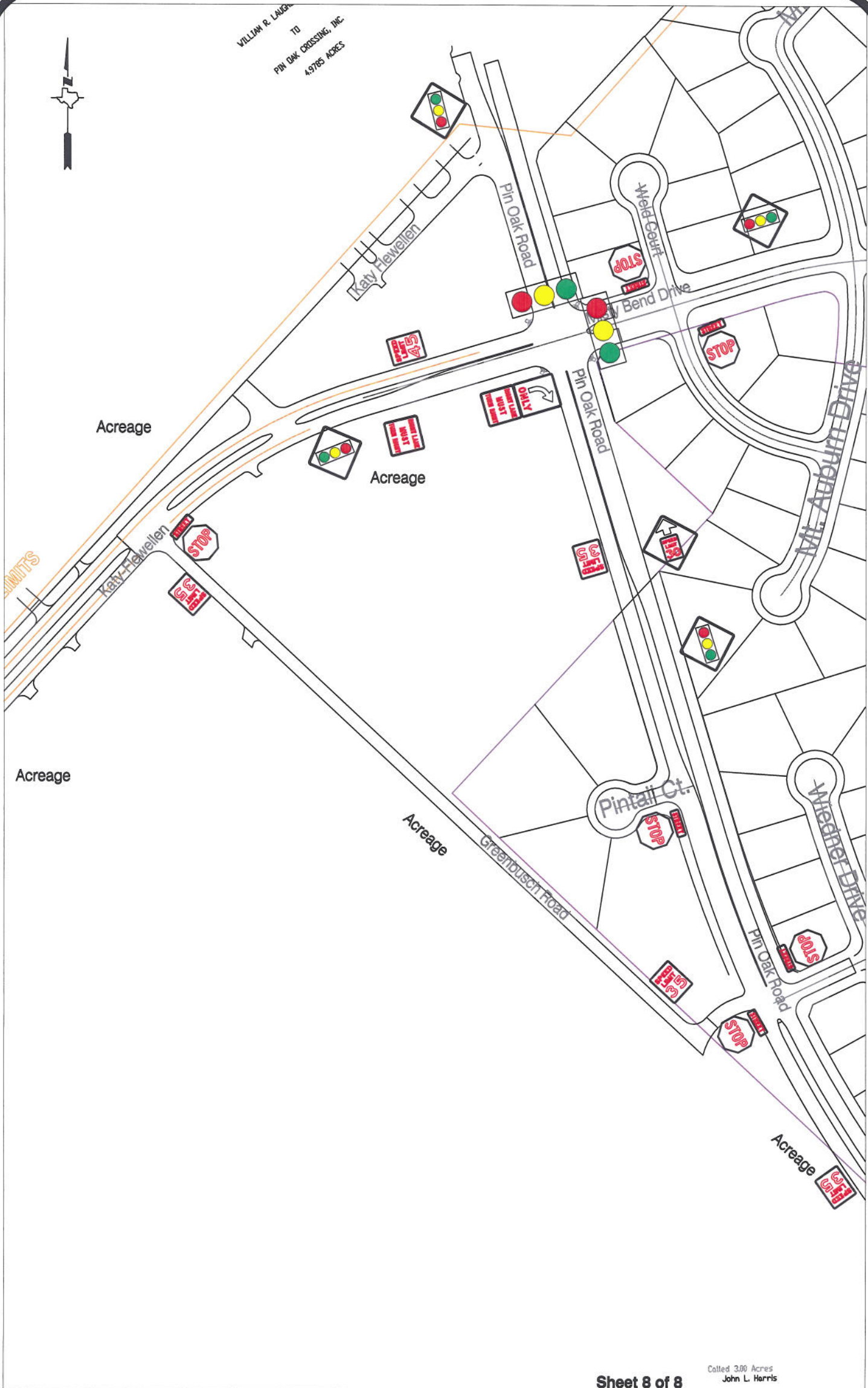
Sheet 7 of 8

Note:
 The purpose of this traffic control plan is to establish traffic control for Westheimer Parkway from Falcon Landing Boulevard to Pin Oak.

Drawn By: L. Brdecka
 Date: 8-15-12
 Approved By: Nathan Hatcher
 Date: 8-15-12
 Scale
 1" = 200'-0"

Westheimer Parkway from Falcon Landing Boulevard to Pin Oak Control Map and Traffic Sign Layout
 Fort Bend County Engineering Dept.
 1124 Blume Road
 Rosenberg, Texas 77471

VILLIAM R. LAUGHLIN
 TO
 PIN OAK CROSSING, INC.
 49785 ACRES



Sheet 8 of 8
 Called 3.00 Acres
 John L. Harris

Note:
 The purpose of this traffic control plan is to establish traffic control for Westheimer Parkway from Falcon Landing Boulevard to Pin Oak.

Drawn By: L. Brdecka
 Date: 8-15-12
 Approved By: Nathan Hatcher
 Date: 8-15-12
 Scale
 1" = 200'-0"

Westheimer Parkway from Falcon Landing Boulevard to Pin Oak Control Map and Traffic Sign Layout
 Fort Bend County Engineering Dept.
 1124 Blume Road
 Rosenberg, Texas 77471