



FORT BEND COUNTY ENGINEERING

Fort Bend County, Texas

Richard W. Stolleis, P.E.
County Engineer

September 17, 2012

Commissioner W. A. "Andy" Meyers
Fort Bend County Precinct 3
22333 Grand Corner Drive
Katy, Texas 77494

**RE: Traffic/Safety Study for Katy ISD No. 31 - Holland Elementary at
Seven Meadows Parkway**

Dear Commissioner:

Fort Bend County Engineering has completed and recommends approval of the traffic control plan for Holland Elementary School to extend the school zone on Seven Meadows Parkway east to past Windhurst Road. Windhurst Road will also be changed to a multi-way stop to accommodate safe crossing of students and parents at the intersection. The school zone will also be extended onto Trophy Lane and Fair Meadow Lane to the east and north of the school. A crosswalk will also be installed at the intersection of Fair Meadow Lane to allow pedestrian traffic to cross over from the park area to the school site. Katy ISD has said that they will provide a crossing guard at this crosswalk location. If there are no objections to the plan, it will be scheduled on the next available Commissioner's Court agenda.

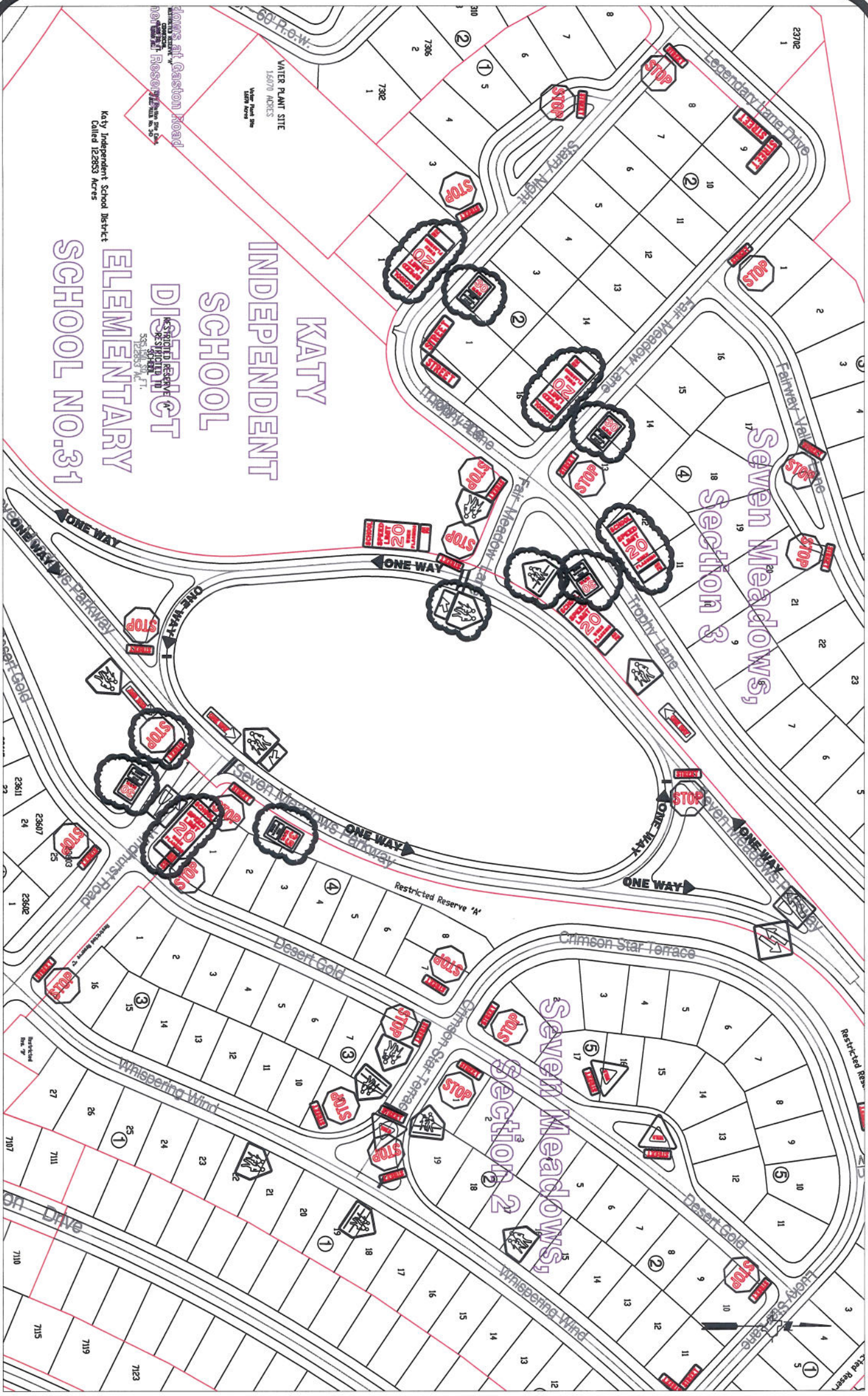
A copy of the traffic control plan is attached for your review. If you should have any questions, please give me a call.

Sincerely,

Nathan D. Hatcher
Assistant to County Engineer

NDH/mjs

cc: Judge Robert E. Hebert, County Judge
Marc Grant - FBC Road & Bridge
Marc Grant - Signage Department
Mr. John C. Bremer, Katy Ind. School District Police Dept., 20370 Franz Road,
Katy, Texas 77449, johncbremer@katyisd.org



KATY
INDEPENDENT
SCHOOL
DISTRICT
ELEMENTARY
SCHOOL NO. 31

Katy Independent School District
Called 12.2853 Acres

Note:
The purpose of this traffic control plan is to revise traffic control for Katy I.S.D. Elementary School No. 31 as indicated on the drawing.

Drawn By: L. Brdecka
Date: 9-17-12
Approved By: Steven L. Evans
Date: 9-17-12
Scale
1" = 200'-0"

Revised Katy I.S.D. Elementary
School No. 31 STD
Control Map and
Traffic Sign Layout
Fort Bend County Engineering Dept.
1124 Blume Road
Rosenberg, Texas 77471