

# PLAT RECORDING SHEET

PLAT NAME: Shadow Glen at Riverstone, Section 3 Phase 2

PLAT NO: \_\_\_\_\_

ACREAGE: 8.5306

LEAGUE: William Little Survey

ABSTRACT NUMBER: 54

NUMBER OF BLOCKS: 4

NUMBER OF LOTS: 35

NUMBER OF RESERVES: 4

OWNERS: Herrin Ranch Development II, Inc.

\_\_\_\_\_  
(DEPUTY CLERK)

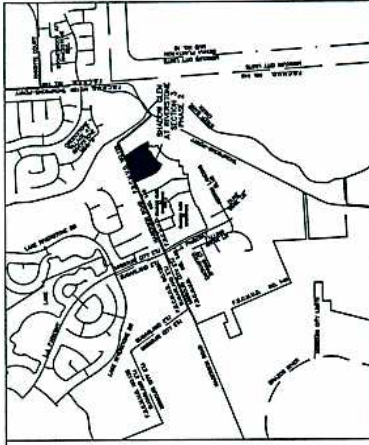
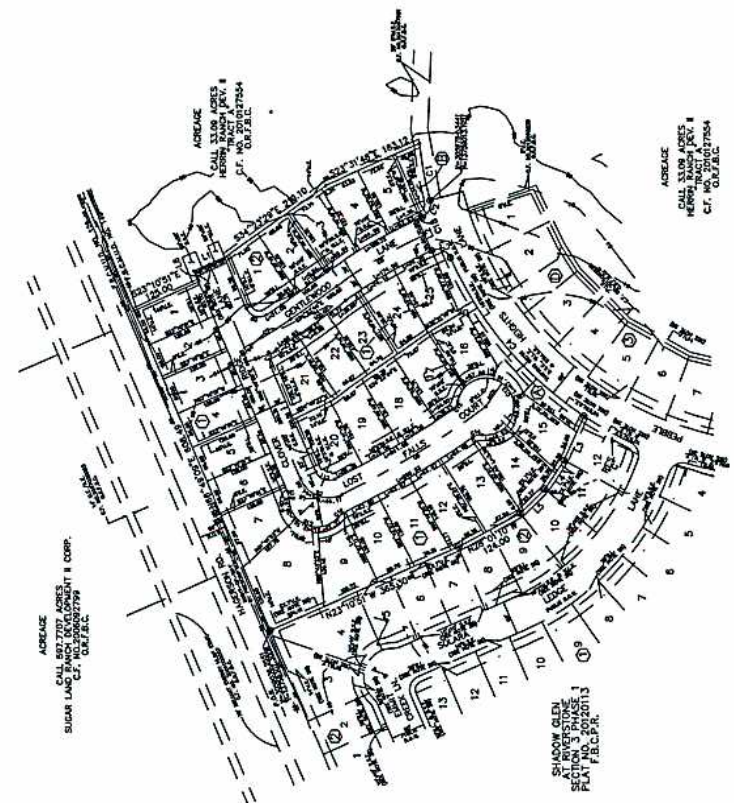


**LEGEND**  
 - SET 5/8" = 1" ON 100' WITH PLASTIC CAP STAMPED  
 TO BE USED AS A GUIDE FOR THE FIELD SURVEY  
 - 5/16" DIA. PINS FOR 100' TALKERS OTHERWISE NOTED



RESERVE TABLE	
RESERVE 'A'	LANDSCAPE / OPEN SPACE
RESERVE 'B'	LANDSCAPE / OPEN SPACE
RESERVE 'C'	LANDSCAPE / OPEN SPACE
TOTAL	

AREAGE  
 CALL 862.7277 AREAS  
 SUGAR RANCH DEVELOPMENT II CORP.  
 C.F. NO. 201217794



LOT	AREAGE
1	0.1000 AC.
2	0.1000 AC.
3	0.1000 AC.
4	0.1000 AC.
5	0.1000 AC.
6	0.1000 AC.
7	0.1000 AC.
8	0.1000 AC.
9	0.1000 AC.
10	0.1000 AC.
11	0.1000 AC.
12	0.1000 AC.
13	0.1000 AC.
14	0.1000 AC.
15	0.1000 AC.
16	0.1000 AC.
17	0.1000 AC.
18	0.1000 AC.
19	0.1000 AC.
20	0.1000 AC.
21	0.1000 AC.
22	0.1000 AC.
23	0.1000 AC.
24	0.1000 AC.
25	0.1000 AC.
26	0.1000 AC.
27	0.1000 AC.
28	0.1000 AC.
29	0.1000 AC.
30	0.1000 AC.

# SHADOW GLEN AT RIVERSTONE PHASE 2

BEING 8.5306 ACRES  
 LOCATED IN THE  
 WILLIAM LITTLE SURVEY, A-754,  
 FORT BEND COUNTY, TEXAS  
 30 LOTS 2 RESERVES 2 BLOCKS  
 SCALE = 1"=100' DATE: AUGUST, 2012

OWNER:  
 HERRIN RANCH DEVELOPMENT II INC.  
 1001 W. WOODWAY, SUITE 100  
 HOUSTON, TEXAS 77062  
 (713) 466-1900 FAX (713) 466-1904

PLANNER:  
 KERRY R. GILBERT & ASSOCIATES, INC.  
 1001 W. WOODWAY, SUITE 100  
 HOUSTON, TEXAS 77062  
 (713) 466-1900 FAX (713) 466-1904

ENGINEER/SURVEYOR:  
 Costello, Inc.  
 2005 Spring and Summer  
 North Building  
 (713) 763-7788 (713) 763-3880, Fax  
 (713) 763-7788  
 REGISTRATION NO. 200



MARK D. JARSTRAND  
 PROFESSIONAL LAND SURVEYOR  
 TEXAS REGISTRATION NUMBER - 5053

RON J. DECKERT  
 PROFESSIONAL ENGINEER  
 TEXAS REGISTRATION NUMBER - 45444